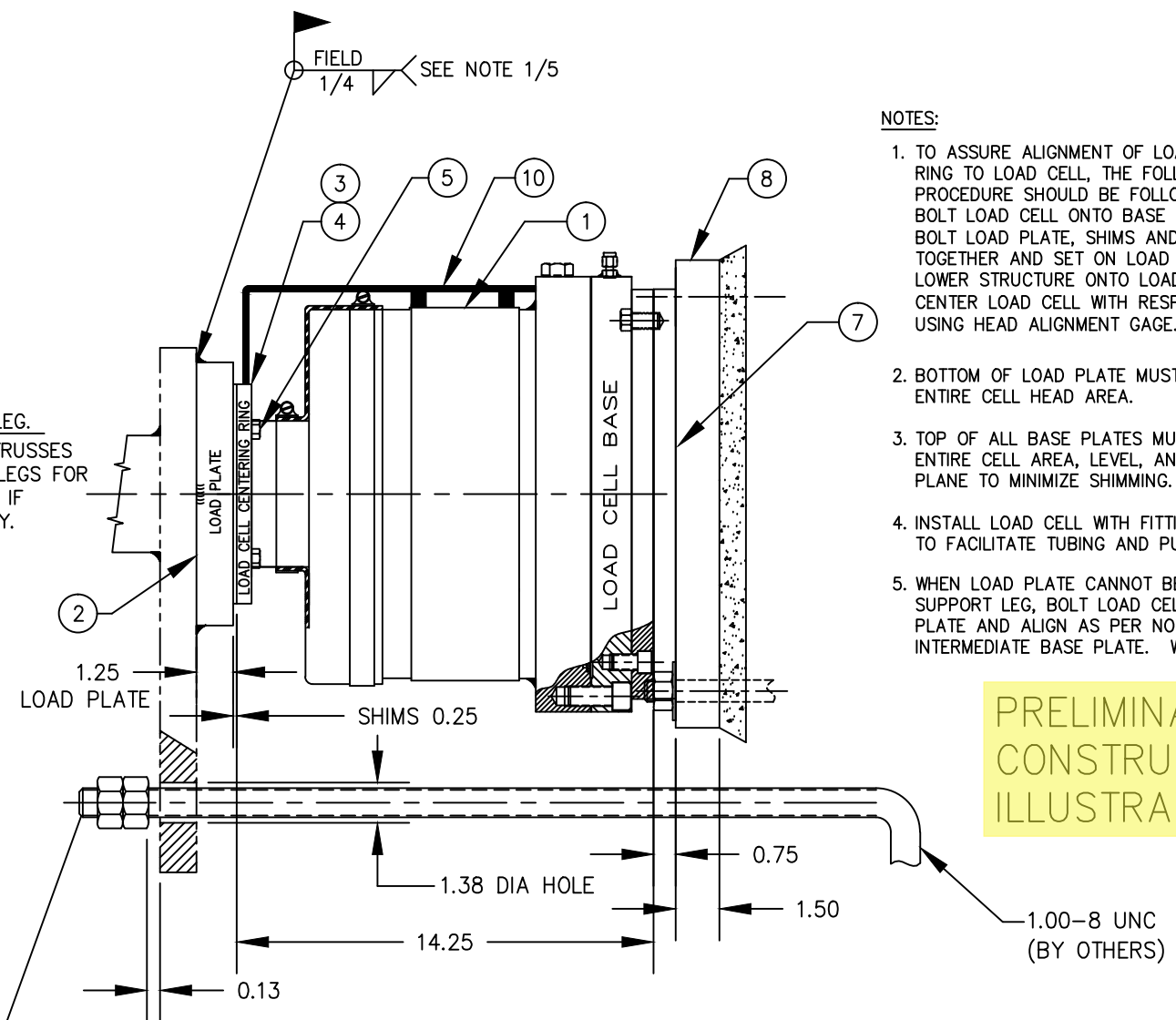
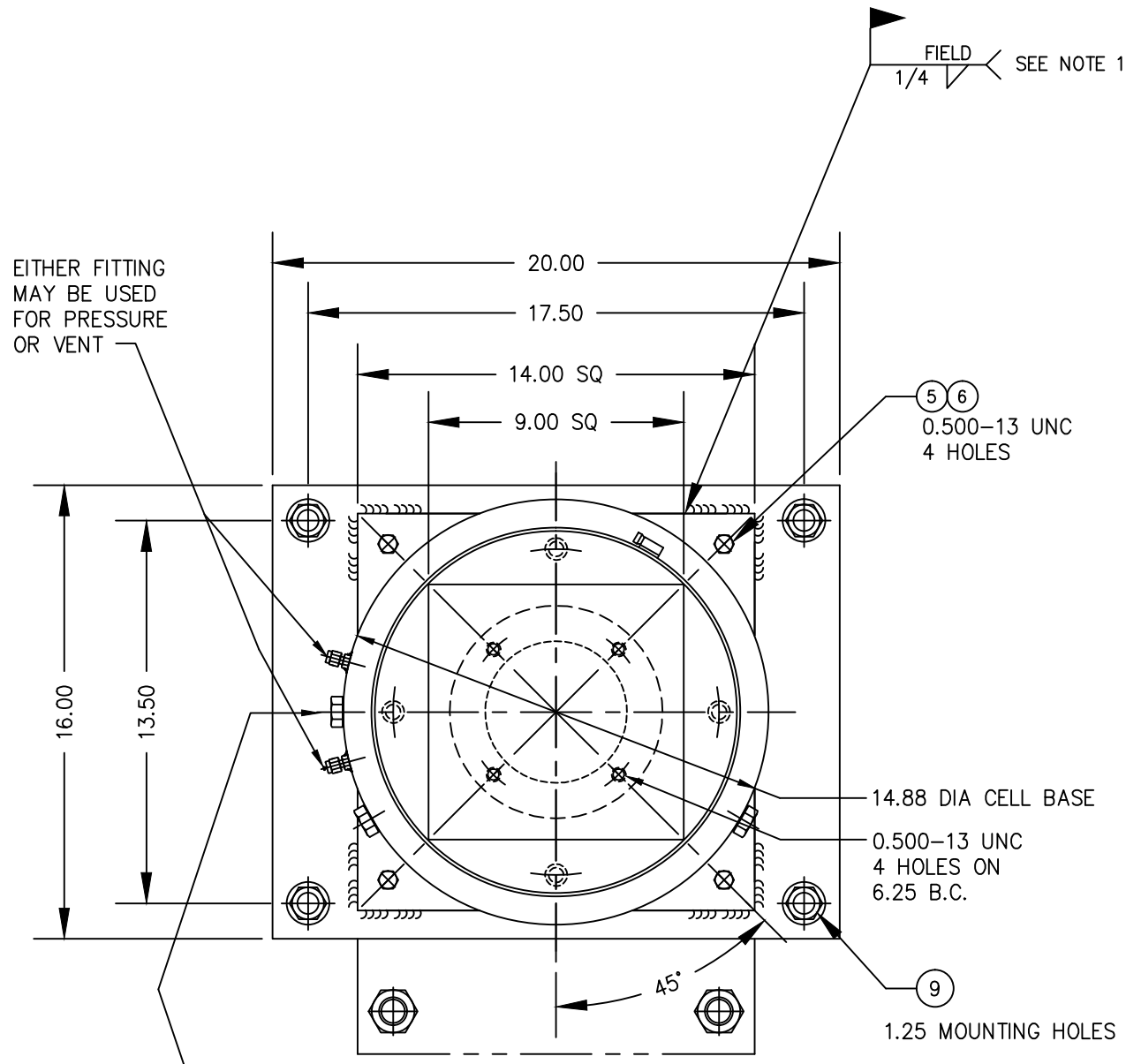
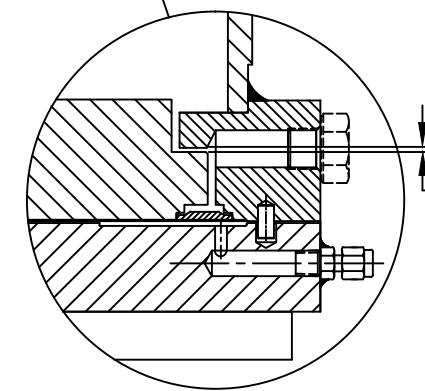


ITEM NO.	DESCRIPTION	QTY	MATERIAL	UNIT WT.	PART NO.	SIZE	WT.
1	LOAD CELL	1	SS 304		B-35415	136-200RR-M3 100 SQ.IN.	
2	LOAD PLATE	1	A/R		B-34036		
3	SHIM	4	SS 304		A-34030-1	0.06 THICK	
4	CENTERING RING	1	CS		B-34029		
5	HEX HEAD SCREW	8	SS 304		0.500-13 UNC X 1.25		
6	WASHER MS15595	4	SS 304		0.531 ID X 1.06 OD 98019A 209 McMASTER-CARR		
7	LOAD CELL ALIGNMENT PLATE	1	A/R		B-34013-2	SEE NOTE 5	
8	BASE PLATE	1	A/R		B-35413		
9	ANCHOR BOLT	4	CS		1.00-8 X 9.00 KB 11 -9	HILTI OR EQUAL	
10	HEAD ALIGNMENT GAGE	1	CDF		B-34038-1		



- NOTES:**
- TO ASSURE ALIGNMENT OF LOAD CELL CENTERING RING TO LOAD CELL, THE FOLLOWING PROCEDURE SHOULD BE FOLLOWED: BOLT LOAD CELL ONTO BASE PLATE. BOLT LOAD PLATE, SHIMS AND CENTERING RING TOGETHER AND SET ON LOAD CELL. LOWER STRUCTURE ONTO LOAD PLATE AND CENTER LOAD CELL WITH RESPECT TO CENTERING RING USING HEAD ALIGNMENT GAGE. WELD IN PLACE AS SHOWN.
 - BOTTOM OF LOAD PLATE MUST BE FLAT OVER ENTIRE CELL HEAD AREA.
 - TOP OF ALL BASE PLATES MUST BE FLAT OVER ENTIRE CELL AREA, LEVEL, AND ON A COMMON PLANE TO MINIMIZE SHIMMING.
 - INSTALL LOAD CELL WITH FITTINGS ACCESSIBLE TO FACILITATE TUBING AND PURGING.
 - WHEN LOAD PLATE CANNOT BE FIELD WELDED TO SUPPORT LEG, BOLT LOAD CELL TO LOAD CELL ALIGNMENT PLATE AND ALIGN AS PER NOTE 1 BY MOVING INTERMEDIATE BASE PLATE. WELD IN PLACE.

PRELIMINARY NOT FOR CONSTRUCTION. FOR ILLUSTRATION ONLY.



1. REMOVE NYLON SCREW.
 2. FILL LOAD CELL WITH FLUID TO A GAUGING OF:
 $\frac{A+B+C}{3} = 0.030 \pm 0.002$
 (GAP CLOSES WHEN FILLING WITH FLUID)

WITH RESPECT TO WIND FORCE, EARTHQUAKE CONDITIONS, OR OTHER EXTERNAL FORCES, THE FOLLOWING SHOULD BE CONSIDERED: TALL AND NARROW VERTICAL TANKS MAY REQUIRE VERTICAL STOPS TO PREVENT OVERTURNING.

NTEP CERT NO. 88-239-PA1

ALL SHARP CORNERS AND EDGES TO BE BROKEN			EMERY WINSLOW SCALE COMPANY SEYMOUR, CT U.S.A TERRE HAUTE, IN.	
B	ITEM 10 ADDED	10/9/01	CBM	UNLESS OTHERWISE SPECIFIED DIMENSIONS ARE IN INCHES MACHINING .XX = ± .01 XXX = ± .005 FABRICATION ± .13
A	FIELD WELD ADDED TO TOP VIEW	1/29/01	CBM	
LTR	REVISION	DATE	BY	DRAWN CBM DATE 12/1/00
THIS DRAWING IS THE PROPERTY OF EMERY WINSLOW SCALE COMPANY SEYMOUR, CONNECTICUT. THE INFORMATION CONTAINED HEREIN IS CONFIDENTIAL AND IS NOT TO BE USED OR DISSEMINATED TO OTHERS WITHOUT THE EXPRESS WRITTEN CONSENT OF EMERY WINSLOW SCALE COMPANY.				CHECKED DATE
				ACAD FILENAME: AC00812
				LAYERS USED: ALL
SCALE 1:6		FIRST USED ON	DRAWING NO. B-35399	REV. B