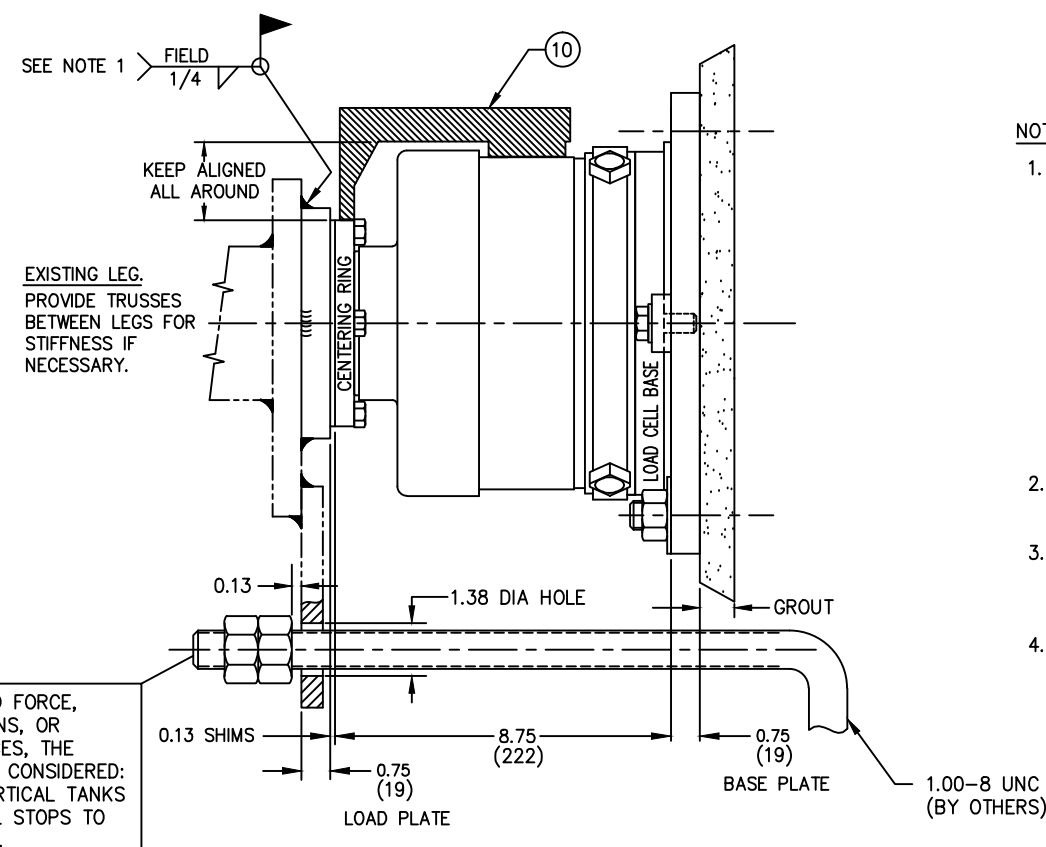
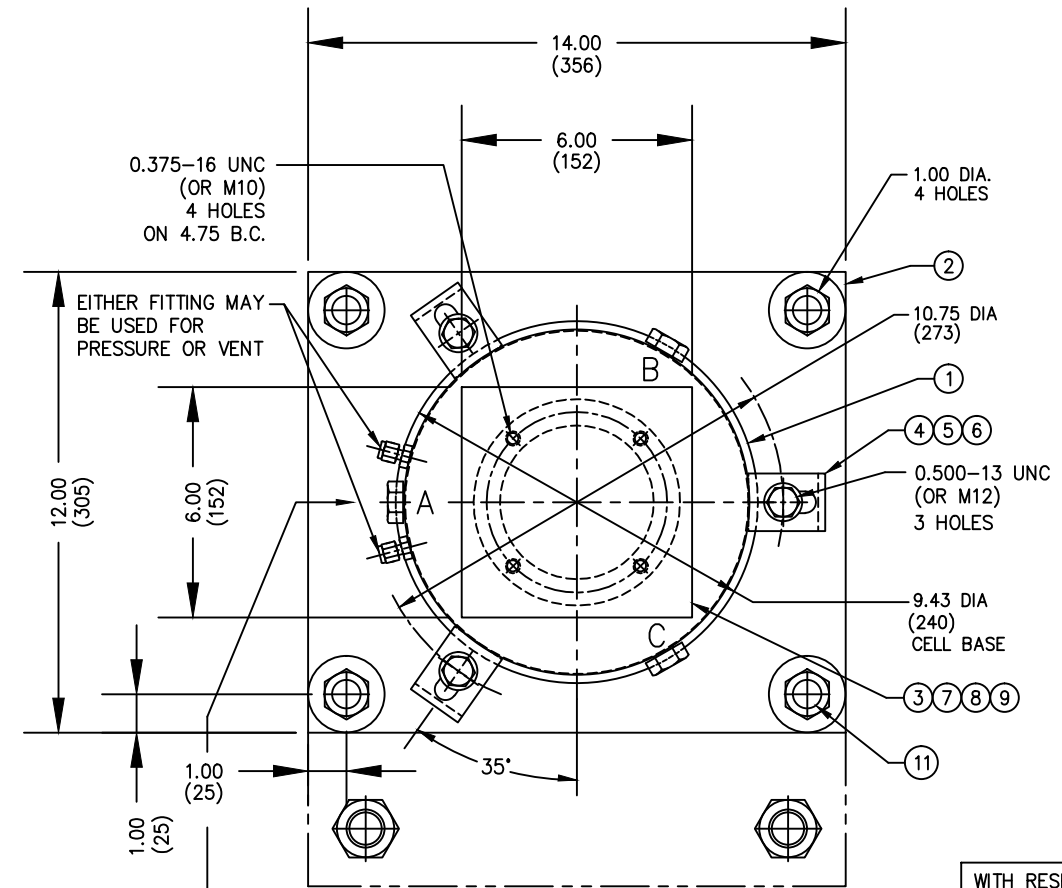


ITEM NO.	DESCRIPTION	QTY	MATERIAL	UNIT WT.	PART NO.	SIZE	WT.
1	LOAD CELL	1	SS 304		D-29547-1,-2	136-50.0/75.0	41.28 SQ.IN.
2	BASE PLATE	• 1	A/R		B-29953		
3	LOAD PLATE	• 1	A/R		A-31522-1		
4	HEX HEAD SCREW	3	SS 304		0.500-13 UNC X 1.25		
5	WASHER	3	SS 304		0.500 ID X 1.06 OD MS15795		
6	CLAMP	3	CS/ZINC PL		A-29870-2		
7	SHIM	2	SS 304		A-29869-1	0.06 THICK	
8	CENTERING RING	1	CS		B-29871		
9	HEX HEAD SCREW	4	SS 304		0.375-16 UNC X 1.25		
10	ALIGNMENT GAGE	1	ALUM		B-30305-1		
11	ANCHOR BOLT 3/4 X 7	• 4	CS		KB 11 34-7	HILTI OR EQUAL	

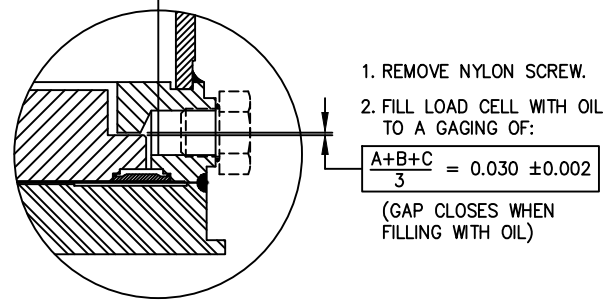
• SUPPLIED OPTIONALLY



NOTES:

1. TO ASSURE ALIGNMENT OF LOAD CELL CENTERING RING TO LOAD CELL BASE, THE FOLLOWING PROCEDURE SHOULD BE FOLLOWED: CENTER LOAD CELL ON BASE PLATE WITH RESPECT TO CLAMP HOLD DOWN HOLES. CLAMP CELL IN POSITION USING CLAMPS, BOLTS AND WASHERS PROVIDED. BOLT LOAD PLATE, SHIMS AND CENTERING RING TOGETHER AND SET ON LOAD CELL. CENTER LOAD CELL BASE WITH RESPECT TO CENTERING RING USING ALIGNMENT GAGE. LOWER STRUCTURE ONTO LOAD PLATE AND WELD IN PLACE. IF REQUIRED, LOOSEN CLAMP BOLTS AND REALIGN CELL. RETIGHTEN CLAMP BOLTS.
2. BOTTOM OF LOAD PLATE MUST BE FLAT OVER ENTIRE CELL HEAD AREA.
3. TOP OF ALL BASE PLATES MUST BE FLAT OVER ENTIRE CELL AREA, LEVEL, AND ON A COMMON PLANE TO MINIMIZE SHIMMING.
4. INSTALL LOAD CELL WITH FITTINGS ACCESSIBLE TO FACILITATE TUBING AND PURGING.

WITH RESPECT TO WIND FORCE, EARTHQUAKE CONDITIONS, OR OTHER EXTERNAL FORCES, THE FOLLOWING SHOULD BE CONSIDERED: TALL AND NARROW VERTICAL TANKS MAY REQUIRE VERTICAL STOPS TO PREVENT OVERTURNING.



PRELIMINARY NOT FOR CONSTRUCTION. FOR ILLUSTRATION ONLY.

REVISION	DATE	BY
E	5/4/04	CBM
D	9/16/99	JDS
C	5/7/97	JDS
B	1/13/96	JDS
A	12/3/95	JDS
LTR		

THIS DRAWING IS THE PROPERTY OF EMERY WINSLOW SCALE COMPANY SEYMOUR, CONNECTICUT. THE INFORMATION CONTAINED HEREIN IS CONFIDENTIAL AND IS NOT TO BE USED OR DISSEMINATED TO OTHERS WITHOUT THE EXPRESS WRITTEN CONSENT OF EMERY WINSLOW SCALE COMPANY.

ALL SHARP CORNERS AND EDGES TO BE BROKEN		
UNLESS OTHERWISE SPECIFIED DIMENSIONS ARE IN INCHES		
DECIMALS	FRACTIONS	ANGLES
.xx = ± .010	±	±
.xxx = ± .005		
DRAWN JDS	DATE 12/3/95	
CHECKED	DATE	
ACAD FILENAME: AC00330		
LAYERS USED: 45,46		

NTEP CERT NO. 88-239-PA1

EMERY WINSLOW SCALE COMPANY
SEYMOUR, CT. U.S.A. TERRE HAUTE, IN.

INSTALLATION OF SELF-CHECKING HYDROSTATIC COMPRESSION LOAD CELL ON CONCRETE
MODEL 136-30/50/75CH
30000/50000/75000 lb CAPACITY

SCALE 1:5	FIRST USED ON	DRAWING NO. B-34656	REV. E
-----------	---------------	---------------------	--------