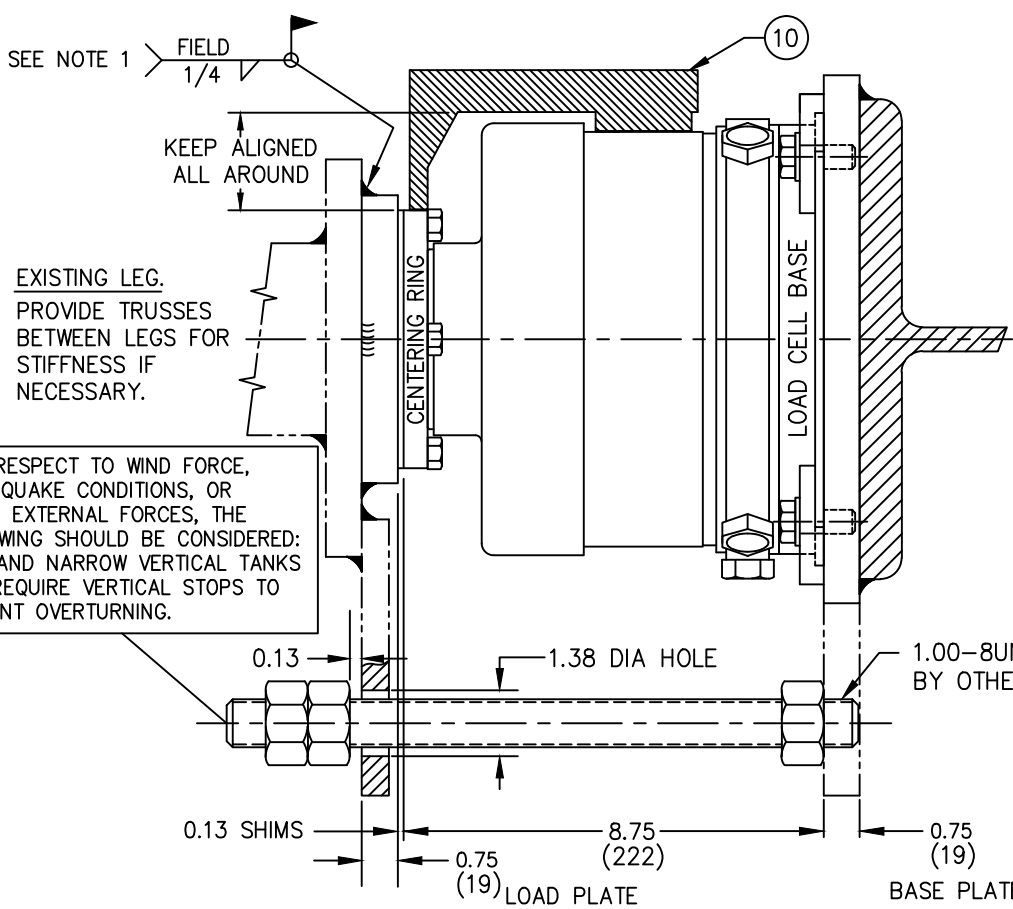
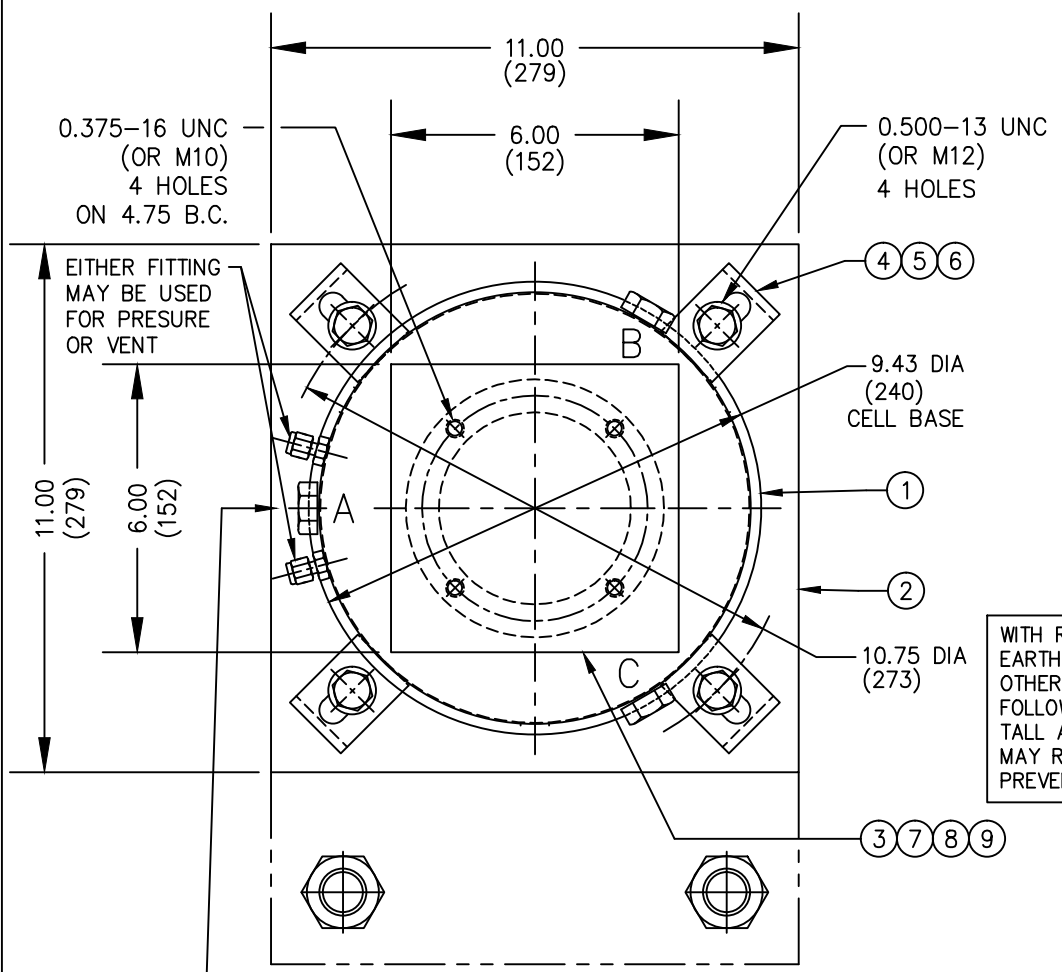
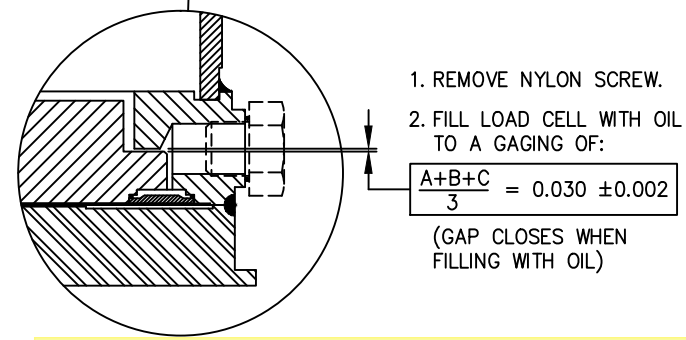


ITEM NO.	DESCRIPTION	QTY	MATERIAL	UNIT WT.	PART NO.	SIZE	WT.
1	LOAD CELL	1	SS 304		D-29547-1,-2,-4	136-30.0/50.0/75.0	41.28 SQ.IN.
2	BASE PLATE	• 1	A/R		B-34827		
3	LOAD PLATE	• 1	A/R		A-31522-1		
4	HEX HEAD SCREW	4	SS 304		0.500-13 UNC X 1.25		
5	WASHER MS15795	4	SS 304		0.531 ID X 1.06 OD	98019A 209	McMASTER-CARR
6	CLAMP	4	CS/ZINC PL		A-29870-2		
7	SHIM	2	SS 304		A-29869-1		0.06 THICK
8	CENTERING RING	1	CS		B-29871		
9	HEX HEAD SCREW	4	SS 304		0.375-16 UNC X 1.25		
10	ALIGNMENT GAGE	1	ALUM		B-30305-1		



- SUPPLIED OPTIONALLY
- NOTES:
1. TO ASSURE ALIGNMENT OF LOAD CELL CENTERING RING TO LOAD CELL BASE, THE FOLLOWING PROCEDURE SHOULD BE FOLLOWED: CENTER LOAD CELL ON BASE PLATE WITH RESPECT TO CLAMP HOLD DOWN HOLES. CLAMP CELL IN POSITION USING CLAMPS, BOLTS AND WASHERS PROVIDED. BOLT LOAD PLATE, SHIMS AND CENTERING RING TOGETHER AND SET ON LOAD CELL. CENTER LOAD CELL BASE WITH RESPECT TO CENTERING RING USING ALIGNMENT GAGE. LOWER STRUCTURE ONTO LOAD PLATE AND WELD IN PLACE. IF REQUIRED, LOOSEN CLAMP BOLTS AND REALIGN CELL. RETIGHTEN CLAMP BOLTS.
 2. BOTTOM OF LOAD PLATE MUST BE FLAT OVER ENTIRE CELL HEAD AREA.
 3. TOP OF ALL BASE PLATES MUST BE FLAT OVER ENTIRE CELL AREA, LEVEL, AND ON A COMMON PLANE TO MINIMIZE SHIMMING.
 4. INSTALL LOAD CELL WITH FITTINGS ACCESSIBLE TO FACILITATE TUBING AND PURGING.



PRELIMINARY NOT FOR CONSTRUCTION. FOR ILLUSTRATION ONLY.

REVISION	DATE	BY
F	8/30/12	CEM
E	5/4/04	CBM
D	9/16/99	JDS
C	5/7/97	JDS
B	1/13/96	JDS
A	11/30/95	JDS
LTR		

THIS DRAWING IS THE PROPERTY OF EMERY WINSLOW SCALE COMPANY SEYMOUR, CONNECTICUT. THE INFORMATION CONTAINED HEREIN IS CONFIDENTIAL AND IS NOT TO BE USED OR DISSEMINATED TO OTHERS WITHOUT THE EXPRESS WRITTEN CONSENT OF EMERY WINSLOW SCALE COMPANY.

ALL SHARP CORNERS AND EDGES TO BE BROKEN
UNLESS OTHERWISE SPECIFIED DIMENSIONS ARE IN INCHES
DECIMALS FRACTIONS ANGLES
.XX = ± .010 ± ±
.XXX = ± .005 ± ±
DRAWN JDS DATE 11/30/95
CHECKED DATE
ACAD FILENAME: AC00330
LAYERS USED: 30,39

NTEP CERT NO. 88-239-PA1

EMERY WINSLOW SCALE COMPANY
SEYMOUR, CT. U.S.A. TERRE HAUTE, IN.

INSTALLATION OF SELF-CHECKING HYDROSTATIC COMPRESSION LOAD CELL ON STEEL
MODEL 136-30/50/75CH
30000/50000/75000 lb CAPACITY

SCALE 1:4	FIRST USED ON	DRAWING NO. B-34635	REV. F
-----------	---------------	---------------------	--------