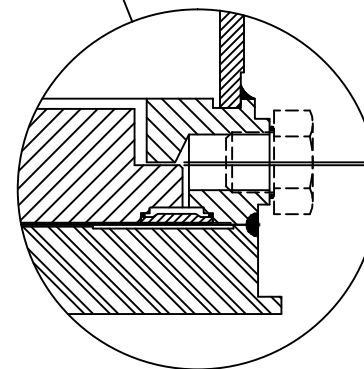


ITEM NO.	DESCRIPTION	QTY	MATERIAL	UNIT WT.	PART NO.	SIZE	WT.
1	LOAD CELL	1	SS 304		B-36508	136-10CH	14.47 SQ.IN.
2	BASE PLATE	1	A/R		B-35031-1	0.50 X 8.00 X 12.50	
3	LOAD PLATE	1	A/R		A-72316	0.75 X 4.00 X 4.00	
4	HEX HD SCREW	4	SS 304		0.375-16 UNC X 1.00		
5	WASHER MS15795	4	SS 304		0.406 ID X 0.812 OD	98019A399	McMASTER-CARR
6	CLAMP	4	SS 304		A-34653-1	0.25 X 1.00 X 1.50	
7	LEVELING HEX NUT	4	SS 304		0.500-13 UNC		
8	ANCHOR BOLT	4	SS 304		KB11304SS112-512 (0.500-13 UNC X 5.50)	HILTI OR EQUAL	

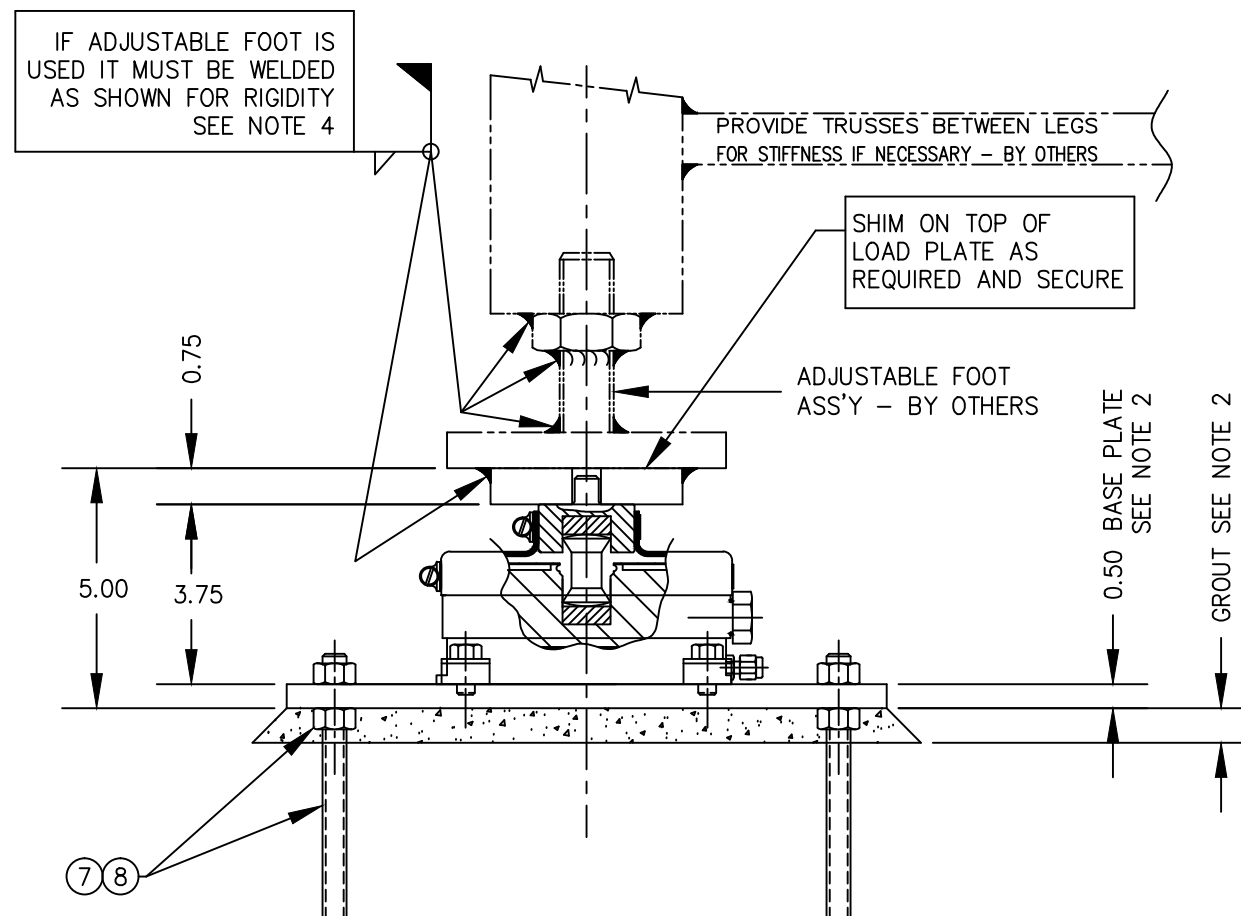
• SUPPLIED OPTIONALLY BY EWSCO



1. REMOVE NYLON SCREW.
2. FILL LOAD CELL WITH FLUID TO A GAGING OF:
0.025 - 0.030
(GAP CLOSING WHEN FILLING WITH FLUID)

NOTES:

1. LAYOUT BASE PLATES ON FLOOR TO LEG CONFIGURATION USING CENTER MARKS. INSTALL ANCHOR BOLTS TO MANUFACTURERS SPECIFICATIONS.
2. TOP OF ALL BASE PLATES MUST BE FLAT OVER ENTIRE CELL AREA, LEVEL, AND ON A COMMON PLANE TO MINIMIZE SHIMMING. IF FLOORS ARE TILE OR ARE SLOPED FOR DRAINAGE, GROUT IS NECESSARY.
3. CLAMP LOAD CELL TO BASE PLATE. INSTALL LOAD CELL WITH FITTINGS ACCESSIBLE FOR PURGING AND MAINTENANCE. PLACE LOAD PLATE ONTO THE LOAD CELL. LOWER STRUCTURE ONTO LOAD PLATE AND SHIM IF NECESSARY.
4. LEG MUST BE WELDED OR BOLTED RIGIDLY TO LOAD PLATE.
DO NOT USE SWIVEL LEVELING FEET
5. IF REQUIRED, LOOSEN CLAMP BOLTS AND LET CELL RECENTER. RETIGHTEN CLAMP BOLTS.
6. ITEMS SUPPLIED BY EWSCO ARE LISTED IN THE B.O.M.



E	NOTE 6 & "BY OTHERS" NOTES ADDED	3/14	CEM	DEBURR ALL CORNERS AND EDGES UNLESS OTHERWISE SPECIFIED DIMENSIONS ARE IN INCHES MACHINING .XX = ± .01 XXX = ± .005 FABRICATION ± .13	EMERY WINSLOW SCALE COMPANY SEYMOUR, CT U.S.A TERRE HAUTE, IN.	
D	RE-ENSTATED DRAWING	4/09	BMW			
C	OBSOLETE DRAWING	7/08	BMW		INSTALLATION OF SELF CHECKING HYDROSTATIC COMPRESSION LOAD CELL ON CONCRETE MODEL 136-10CH 10,000 lb CAPACITY	
B	A-34653-1 WAS A-34653, CORRECTION	4/08	BMW			
A	TEXT CHANGED	10/07	JDS			
LTR	REVISION	DATE	BY	DRAWN CEM DATE 10/01/07 CHECKED DATE ACAD FILENAME: AC01557 LAYERS USED: ALL	SCALE 1:4	FIRST USED ON
THIS DRAWING IS THE PROPERTY OF EMERY WINSLOW SCALE COMPANY SEYMOUR, CONNECTICUT. THE INFORMATION CONTAINED HEREIN IS <u>CONFIDENTIAL</u> AND IS NOT TO BE USED OR DISSEMINATED TO OTHERS WITHOUT THE EXPRESS WRITTEN CONSENT OF EMERY WINSLOW SCALE COMPANY.				DRAWING NO. B-36600	REV. E	