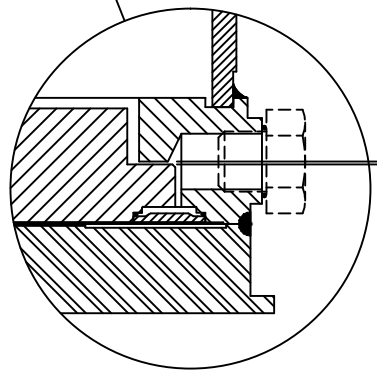


ITEM NO.	DESCRIPTION	QTY	MATERIAL	UNIT WT.	PART NO.	SIZE	WT.
1	LOAD CELL	1	SS 304		AS SPECIFIED	136-20.0RB	25.00 SQ.IN.
2	BASE PLATE	1	A/R		B-35031-1		
3	LOAD PLATE	1	A/R		A-72316		
4	HEX HD SCREW	4	SS 304		0.375-16 UNC X 1.00		
5	WASHER MS15795	4	SS 304		0.406 ID X 0.812 OD	98019A199	McMASTER-CARR
6	CLAMP	4	SS 304		A-34653	0.25 X 1.00 X 1.50	
7							
8	ANCHOR BOLT 0.500 X 5.50	4 (2 MIN)	SS 304		KB11304SS112-512		HILTI OR EQUAL

● SUPPLIED OPTIONALLY

EITHER FITTING MAY BE USED FOR PRESSURE OR VENT

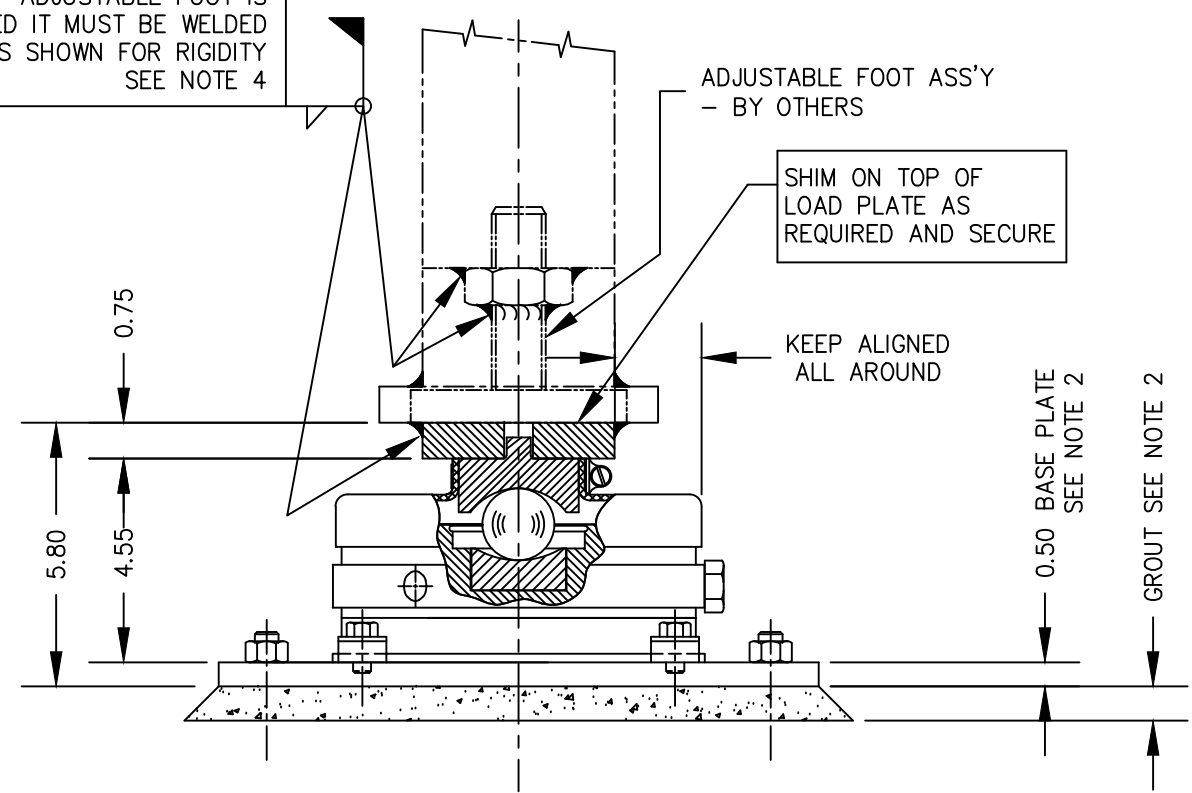


1. REMOVE NYLON SCREW.  
 2. FILL LOAD CELL WITH FLUID TO A GAGING OF:  
 0.025 - 0.030  
 (GAP CLOSSES WHEN FILLING WITH FLUID)

NOTES:

- LAYOUT BASE PLATES ON FLOOR TO LEG CONFIGURATION USING CENTER MARKS. INSTALL ANCHOR BOLTS TO MANUFACTURERS SPECIFICATIONS.
  - TOP OF ALL BASE PLATES MUST BE FLAT OVER ENTIRE CELL AREA, LEVEL, AND ON A COMMON PLANE TO MINIMIZE SHIMMING. IF FLOORS ARE TILE OR ARE SLOPED FOR DRAINAGE, GROUT IS NECESSARY.
  - CLAMP LOAD CELL TO BASE PLATE. PLACE LOAD PLATE AND SHIMS ONTO THE LOAD CELL. LOWER STRUCTURE ONTO LOAD PLATE.
  - LEG MUST BE WELDED OR BOLTED RIGIDLY TO LOAD PLATE.
- DO NOT USE SWIVEL LEVELING FEET
- IF REQUIRED, LOOSEN CLAMP BOLTS AND REALIGN CELL. RETIGHTEN CLAMP BOLTS.
  - INSTALL LOAD CELL WITH FITTINGS ACCESSIBLE FOR PURGING AND MAINTENANCE.
  - ITEMS SUPPLIED BY EWSCO ARE LISTED IN THE B.O.M.

IF ADJUSTABLE FOOT IS USED IT MUST BE WELDED AS SHOWN FOR RIGIDITY SEE NOTE 4



ADJUSTABLE FOOT ASS'Y - BY OTHERS

SHIM ON TOP OF LOAD PLATE AS REQUIRED AND SECURE

KEEP ALIGNED ALL AROUND

0.50 BASE PLATE SEE NOTE 2

GROUT SEE NOTE 2

H	NOTE 7 & "BY OTHERS" NOTE ADDED	03/14	CEM
G	item 2, 3 changed	10/07	JDS
F	NOTE 4, ADJUSTABLE FOOT OPTION ADDED	6/3/04	CBM
E	0.375-16 UNC 1.00 WAS X 0.75	2/12/04	CBM
D	ITEM 7 SHIM REMOVED, NOTE ADDED	3/13/02	CBM
C	ITEM 1,3 AND 4 REVISED	5/99	JDS
B	ITEM 2 WAS B-34930	11/97	JDS
A	ITEM 1 WAS 136-25.0	4/97	JDS
LTR	REVISION	DATE	BY

DEBURR ALL CORNERS AND EDGES  
 UNLESS OTHERWISE SPECIFIED DIMENSIONS ARE IN INCHES  
 MACHINING .XX = ± .01  
 .XXX = ± .005  
 FABRICATION ± .13

EMERY WINSLOW SCALE COMPANY  
 SEYMOUR, CT U.S.A TERRE HAUTE, IN.  
 INSTALLATION OF SELF CHECKING HYDROSTATIC COMPRESSION LOAD CELL ON CONCRETE MODEL 136-20RB 20,000 lb CAPACITY

THIS DRAWING IS THE PROPERTY OF EMERY WINSLOW SCALE COMPANY SEYMOUR, CONNECTICUT. THE INFORMATION CONTAINED HEREIN IS CONFIDENTIAL AND IS NOT TO BE USED OR DISSEMINATED TO OTHERS WITHOUT THE EXPRESS WRITTEN CONSENT OF EMERY WINSLOW SCALE COMPANY.

DRAWN JDS DATE 1/3/97  
 CHECKED DATE  
 ACAD FILENAME: AC00339  
 LAYERS USED: 24,30

NTEP CERT NO. 88-239-PA1  
 SCALE 1:4  
 FIRST USED ON  
 DRAWING NO. B-34875  
 REV. H