

ITEM NO.	DESCRIPTION	QTY	MATERIAL	UNIT WT.	PART NO.	SIZE	WT.
1	LOAD CELL	1	SS 304		AS SPECIFIED	136-20.ORB	25.00 SQ.IN.
2	BASE PLATE	1	A/R		A-34651-2		
3	LOAD PLATE	1	A/R		A-72316		
4	HEX HD SCREW	4	SS 304		0.375-16 UNC X 1.00		
5	WASHER MS15795	4	SS 304		0.406 ID X 0.812 OD	98019A199	McMASTER-CARR
6	CLAMP	4	SS 304		A-34653-1	0.25 X 1.00 X 1.50	
7							

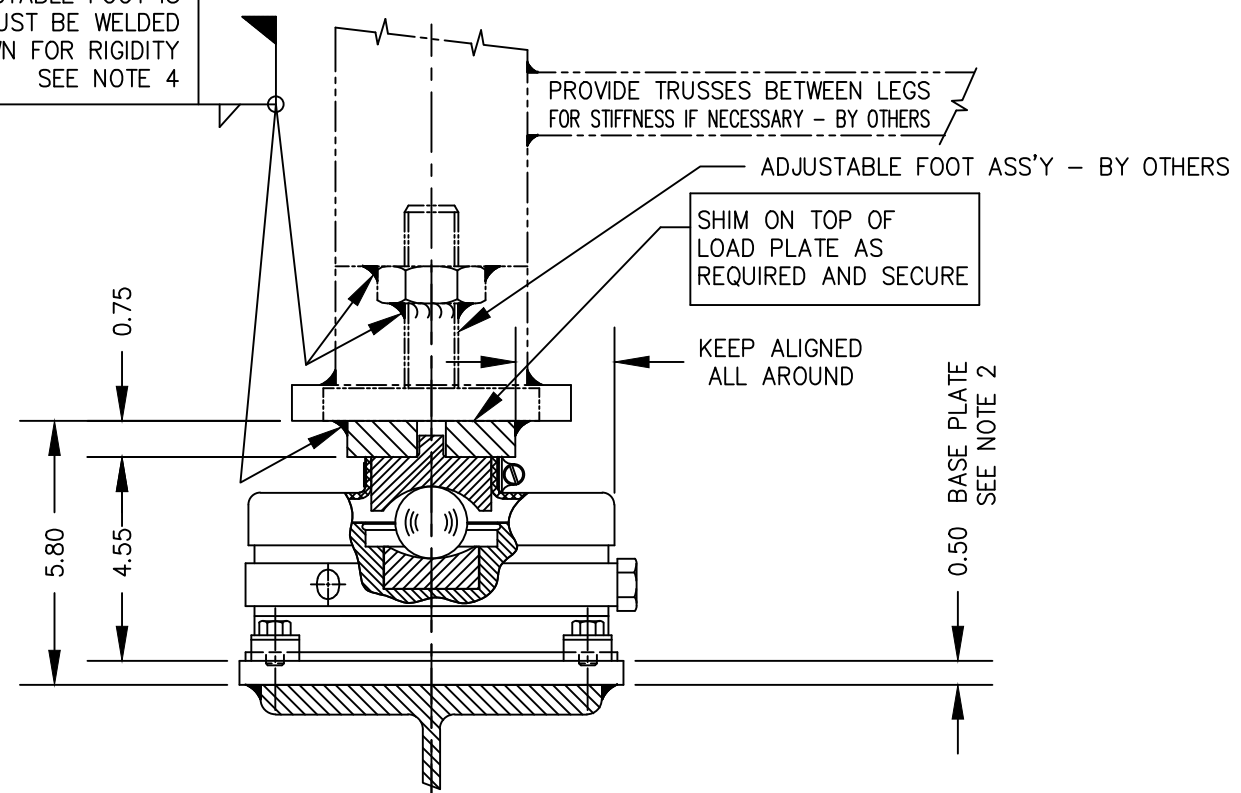
● SUPPLIED OPTIONALLY

1. REMOVE NYLON SCREW.
2. FILL LOAD CELL WITH FLUID TO A GAGING OF:
0.025 - 0.030
(GAP CLOSSES WHEN FILLING WITH FLUID)

NOTES:

1. CLAMP LOAD CELL TO BASE PLATE. PLACE LOAD PLATE AND SHIMS ON LOAD CELL. LOWER STRUCTURE ONTO LOAD PLATE AND WELD LOAD PLATE TO STRUCTURE. IF REQUIRED, LOOSEN CLAMP BOLTS AND REALIGN CELL. RETIGHTEN CLAMP BOLTS.
 2. TOP OF ALL BASE PLATES MUST BE FLAT OVER ENTIRE CELL AREA, LEVEL, AND ON A COMMON PLANE TO MINIMIZE SHIMMING.
 3. INSTALL LOAD CELL WITH FITTINGS ACCESSIBLE FOR PURGING AND MAINTENANCE.
 4. LEG MUST BE WELDED OR BOLTED RIGIDLY TO LOAD PLATE.
- DO NOT USE SWIVEL LEVELING FEET
5. ITEMS SUPPLIED BY EWSCO ARE LISTED IN THE B.O.M.

IF ADJUSTABLE FOOT IS USED IT MUST BE WELDED AS SHOWN FOR RIGIDITY SEE NOTE 4



K	ITEM 2 WAS A34651 & ITEM 6 WAS A34653	12/17/14	CEM
J	NOTE 5 & "BY OTHERS" NOTES ADDED	3/13/14	CEM
H	A-72316 WAS A-34652, BP WAS 5/8"	10/16/09	BMW
G	NOTE 5, ADJUSTABLE FOOT OPTION ADDED	6/3/04	CBM
F	0.375-16 UNC X 1.00 WAS X 0.75	2/12/04	CBM
E	ITEM 7 SHIM REMOVED, NOTE ADDED	3/13/02	CBM
D	ITEM 1,3 AND 4 REVISED	6/21/99	JDS
C	ITEM 1 WAS 136-25.0	4/28/97	JDS
B	4.80 WAS 4.50	7/31/96	JDS
A	CAD REDRAWN	11/28/95	JDS
LTR	REVISION	DATE	BY

NTEP CERT NO. 88-239-PA1

DEBURR ALL CORNERS AND EDGES	EMERY WINSLOW SCALE COMPANY SEYMOUR, CT U.S.A TERRE HAUTE, IN.	
UNLESS OTHERWISE SPECIFIED DIMENSIONS ARE IN INCHES MACHINING .XX = ± .01 .XXX = ± .005	INSTALLATION OF SELF CHECKING HYDROSTATIC COMPRESSION LOAD CELL ON STEEL MODEL 136-20ORB 20,000 lb CAPACITY	
DRAWN JDS DATE 11/15/95	SCALE 1:4	FIRST USED ON
CHECKED DATE	DRAWING NO. B-34650	REV. K
ACAD FILENAME: AC00339		
LAYERS USED: 25,30		

THIS DRAWING IS THE PROPERTY OF EMERY WINSLOW SCALE COMPANY SEYMOUR, CONNECTICUT. THE INFORMATION CONTAINED HEREIN IS CONFIDENTIAL AND IS NOT TO BE USED OR DISSEMINATED TO OTHERS WITHOUT THE EXPRESS WRITTEN CONSENT OF EMERY WINSLOW SCALE COMPANY.