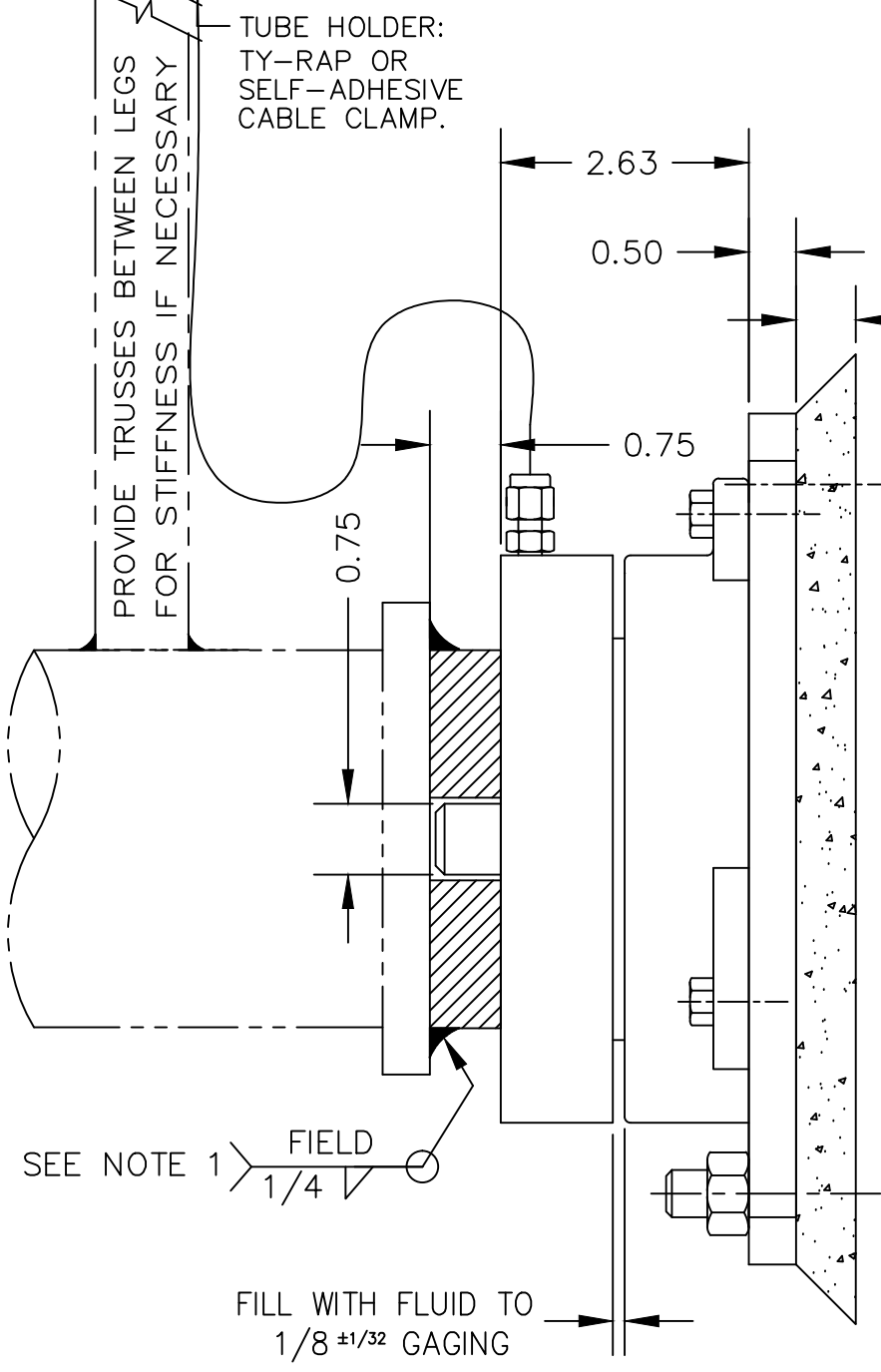
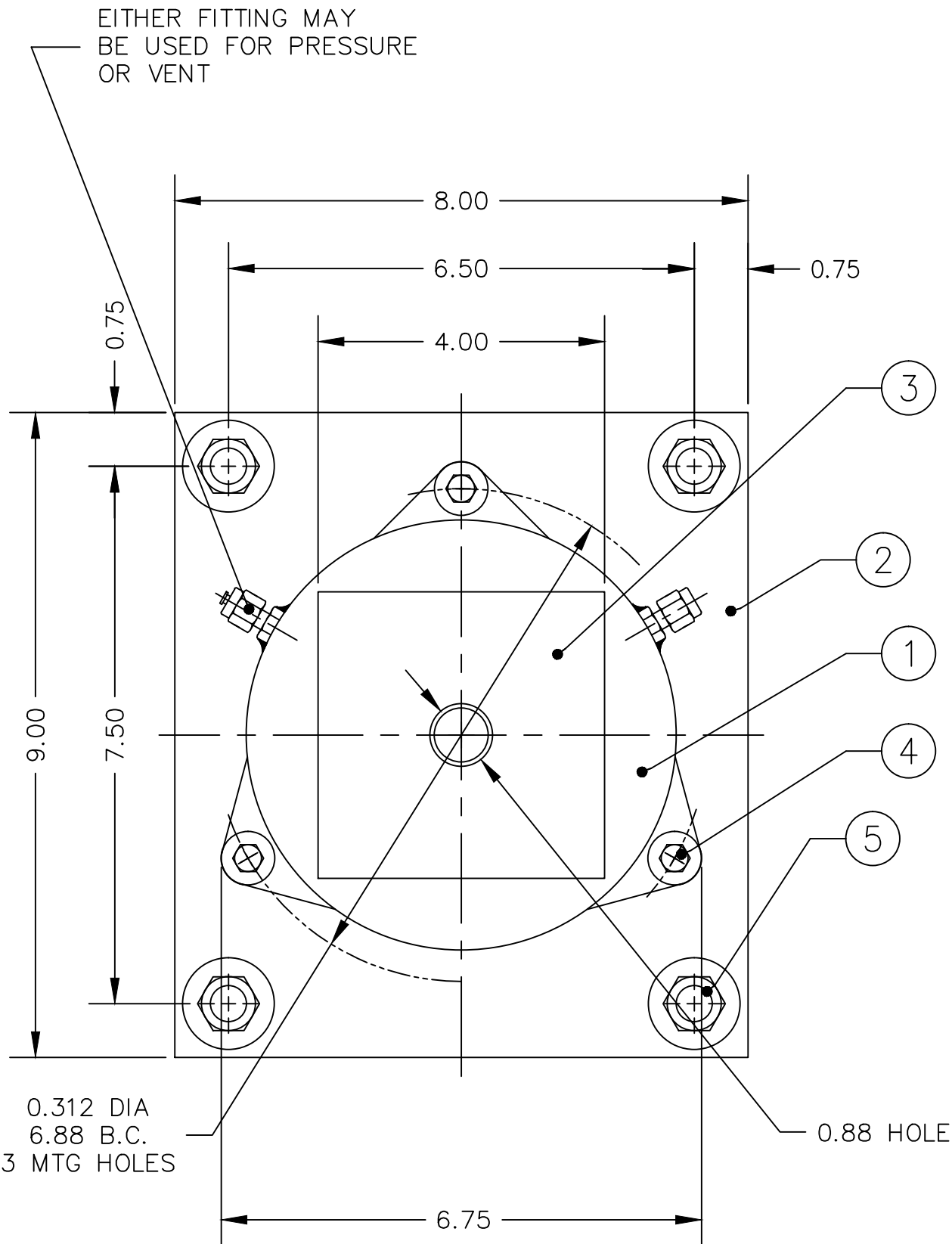


ITEM NO.	DESCRIPTION	QTY	MATERIAL	UNIT WT.	PART NO.	SIZE	WT.
1	LOAD CELL	1	SS 316		B-34085-2	120S-5.0-SC-M3 4.56 SQ IN	
2	BASE PLATE	1	SS 304		A-35436		
3	LOAD PLATE	1	SS 304		A-35410-1		
4	HHCS	3	SS 304		0.250-20 UNC X 0.75		
5	ANCHOR BOLT (OPTIONAL)	4	SS 304		0.50 X 7.00	KB II SSCF 12-7 EXT THD	HILTI



PRELIMINARY NOT FOR CONSTRUCTION. FOR ILLUSTRATION ONLY.

- NOTES:
1. BOLT LOAD CELL TO BASE PLATE. PLACE LOAD PLATE ON LOAD CELL. LOWER STRUCTURE ONTO LOAD PLATE AND WELD LOAD PLATE TO STRUCTURE. IF REQUIRED, LOOSEN CLAMP BOLTS AND REALIGN CELL. RETIGHTEN CLAMP BOLTS.
 2. TOP OF ALL BASE PLATES MUST BE FLAT OVER ENTIRE CELL AREA, LEVEL, AND ON A COMMON PLANE TO MINIMIZE SHIMMING.
 3. INSTALL LOAD CELL WITH FITTINGS ACCESSIBLE TO FACILITATE TUBING AND PURGING.

ALL SHARP CORNERS AND EDGES TO BE BROKEN				EMERY WINSLOW SCALE COMPANY SEYMOUR, CT U.S.A TERRE HAUTE, IN.	
UNLESS OTHERWISE SPECIFIED DIMENSIONS ARE IN INCHES				INSTALLATION OF SELF CHECKING HYDROSTATIC COMPRESSION LOAD CELL ON CONCRETE MODEL 120S-5.0-SC-M3 5,000 lb CAPACITY	
MACHINING .XX = ± .01 .XXX = ± .005		FABRICATION ± .13		SCALE 1:2	FIRST USED ON
A	CHANGED BASE PLATE SIZE	3/10	TMC	DRAWN CBM DATE 2/26/01	DRAWING NO. B-35437
LTR	REVISION	DATE	BY	CHECKED DATE	REV. A
THIS DRAWING IS THE PROPERTY OF EMERY WINSLOW SCALE COMPANY SEYMOUR, CONNECTICUT. THE INFORMATION CONTAINED HEREIN IS CONFIDENTIAL AND IS NOT TO BE USED OR DISSEMINATED TO OTHERS WITHOUT THE EXPRESS WRITTEN CONSENT OF EMERY WINSLOW SCALE COMPANY.				ACAD FILENAME: ACO0835	LAYERS USED: 1-3