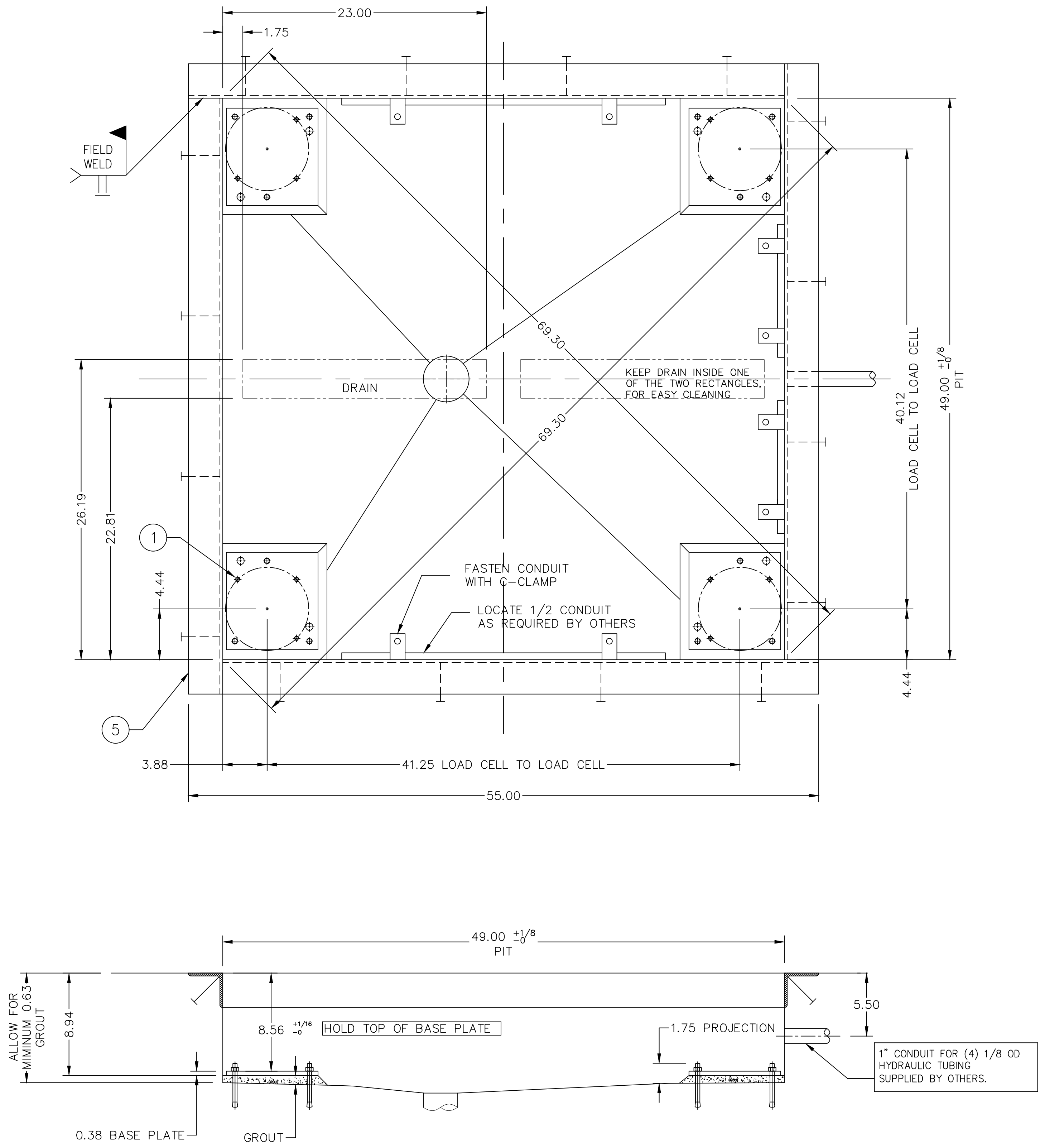


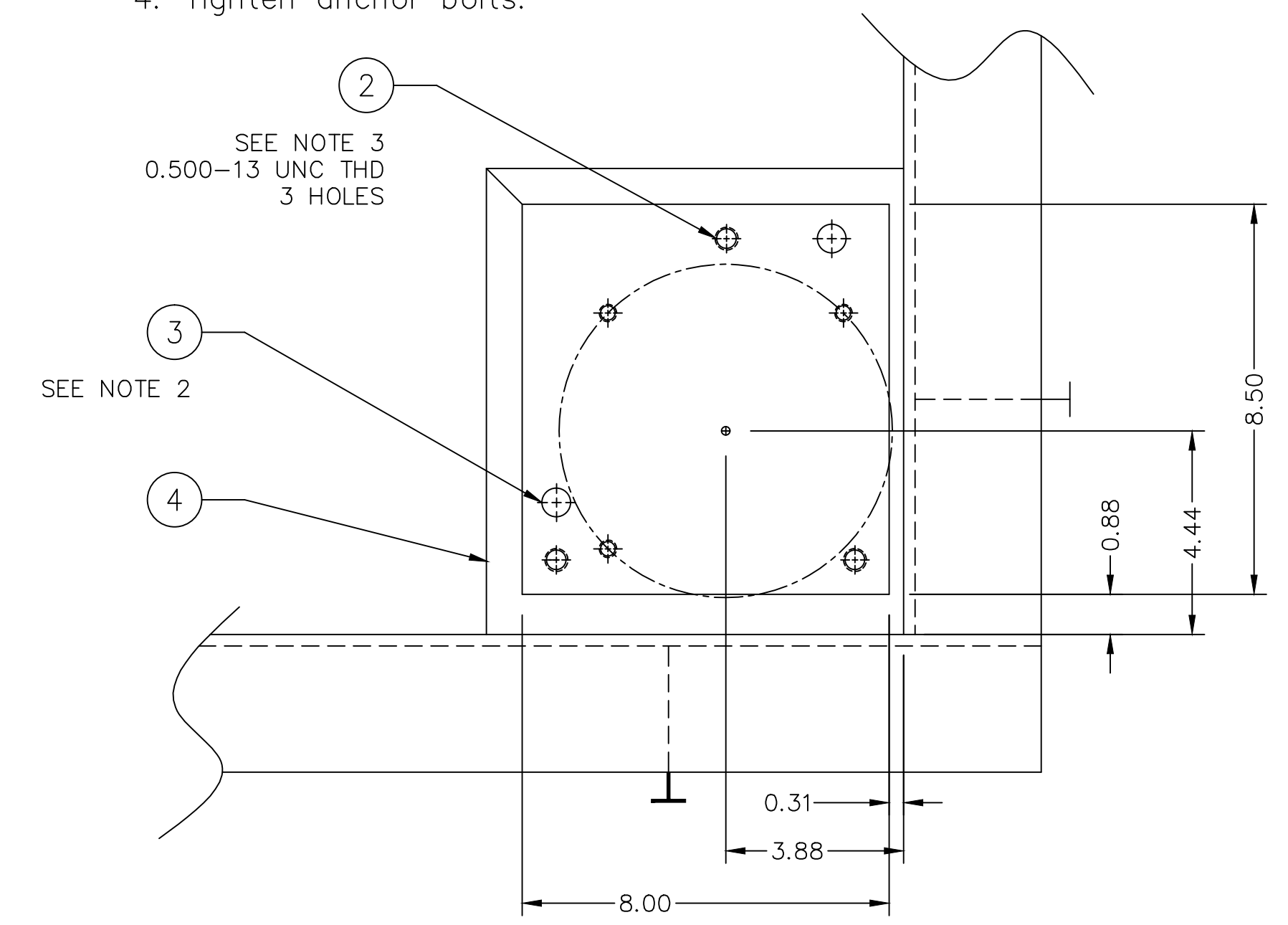
ITEM NO.	DESCRIPTION	QTY	MATERIAL	UNIT WT.	PART NO.	SIZE	WT.
1	BASE PLATE	4	SS 304	10.2	A-72590	0.38 X 8.00 X 8.50	28.9
2	LEVELING SCREW	12	CS		5013HHCS0400FTCS	0.500-13 UNC X 4.00	
3	ANCHOR BOLT 0.50 X 5.50	8	SS 304		5013KB0550SS	HILTI OR EQUAL	
4	GROUT (NON-SHRINKING)	A/R			FIVE STAR PRODUCTS, INC., FAIRFIELD, CT	06430 OR EQUAL	
5	COPING	4	SS 304	15.4	B-75416-1	(3 X 3 X 0.25 X 52.00)	61.6

AVAILABLE AS AN OPTION = OPT



NOTES:

1. Layout base plates and transfer drill anchor bolt holes.
2. Install eight (8) anchor bolts, item 4, as per manufacturers specification.
3. Set base plate item 1 to proper height and level as specified, using greased leveling screws. Remove plate and apply a layer of grout in plate area slightly higher than required. Bolt base plate down to preset screws, squeezing out excess grout. Double check height and level. Remove leveling screws after approximately 2 to 3 hours.
4. Tighten anchor bolts.



PRELIMINARY NOT FOR CONSTRUCTION. FOR ILLUSTRATION ONLY.

REV	DESCRIPTION	DATE	BY
C	ALLOW FOR MINIMUM GROUT NOTE NOW 0.63 WAS 0.56 IN ERROR	04/21	CEM
B	ALLOW FOR MINIMUM GROUT NOTE ADDED TO SIDE VIEW WAS 9.56 DIM	10/20	CEM
A	9.56 DIM WAS 9.37	10/20	CEM

ALL SHARP CORNERS AND EDGES TO BE BROKEN	EMERY WINSLOW SCALE COMPANY SEYMOUR, CT U.S.A TERRE HAUTE, IN.
DIMENSIONS ARE IN INCHES. TOLERANCES UNLESS SPECIFIED OTHERWISE: MACHINING .XX = ± .01 FABRICATION .xxx = ± .005 ± .13	PIT ARRANGEMENT MODEL 710-44-NT 136-10 CH WITH 0.38 LIFT DECK
THIS DRAWING IS THE PROPERTY OF EMERY WINSLOW SCALE COMPANY SEYMOUR, CONNECTICUT. THE INFORMATION CONTAINED HEREIN IS CONFIDENTIAL AND IS NOT TO BE USED OR DISSEMINATED TO OTHERS WITHOUT THE EXPRESS WRITTEN CONSENT OF EMERY WINSLOW SCALE COMPANY.	DRAWN: CEM DATE: 07/17/2020
CHECKED: DATE: ACAD FILENAME: T05637 LAYERS USED: ALL	SCALE: FIRST USED ON DRAWING NO. REV 1:6 D-75498 C