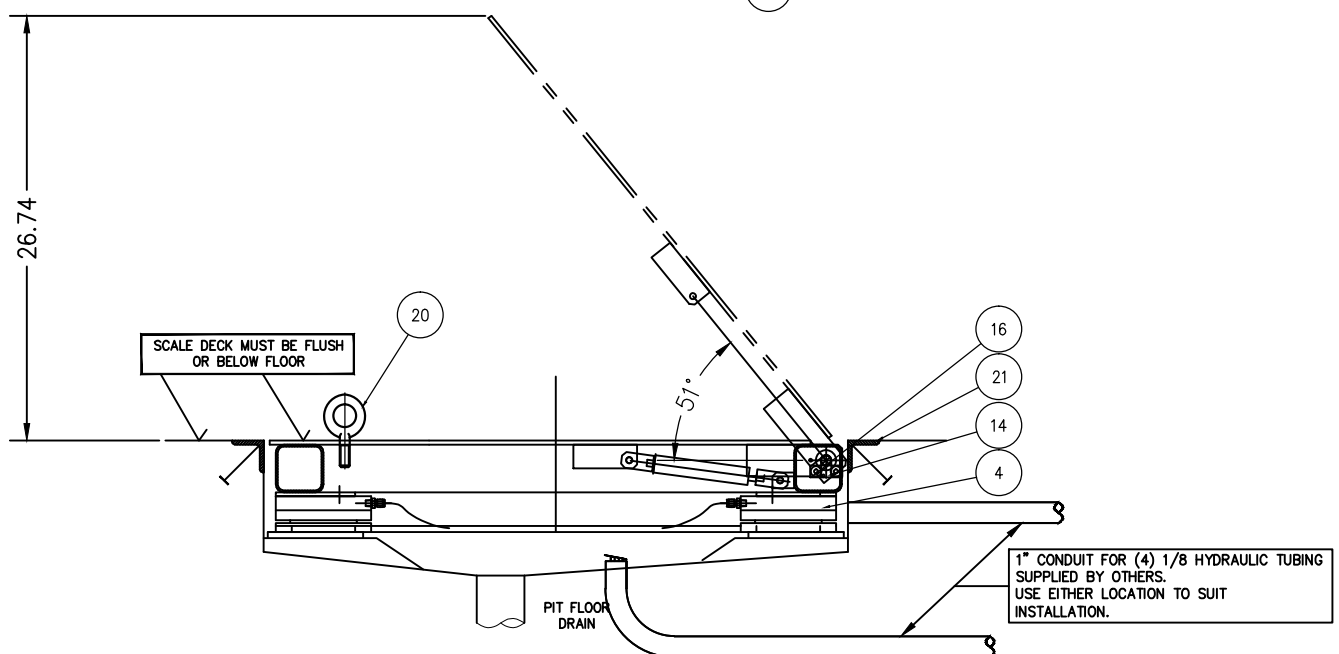
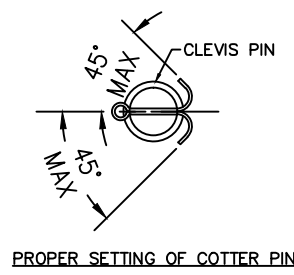
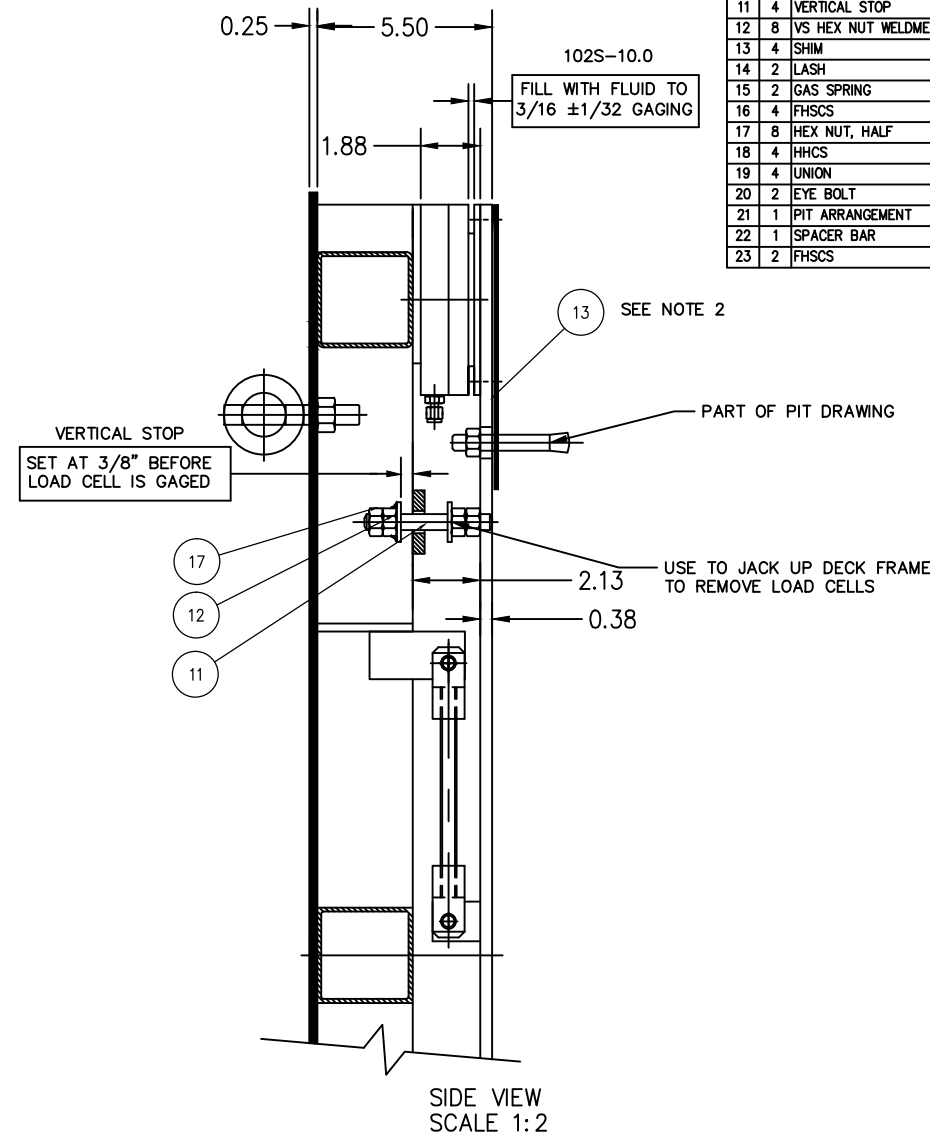
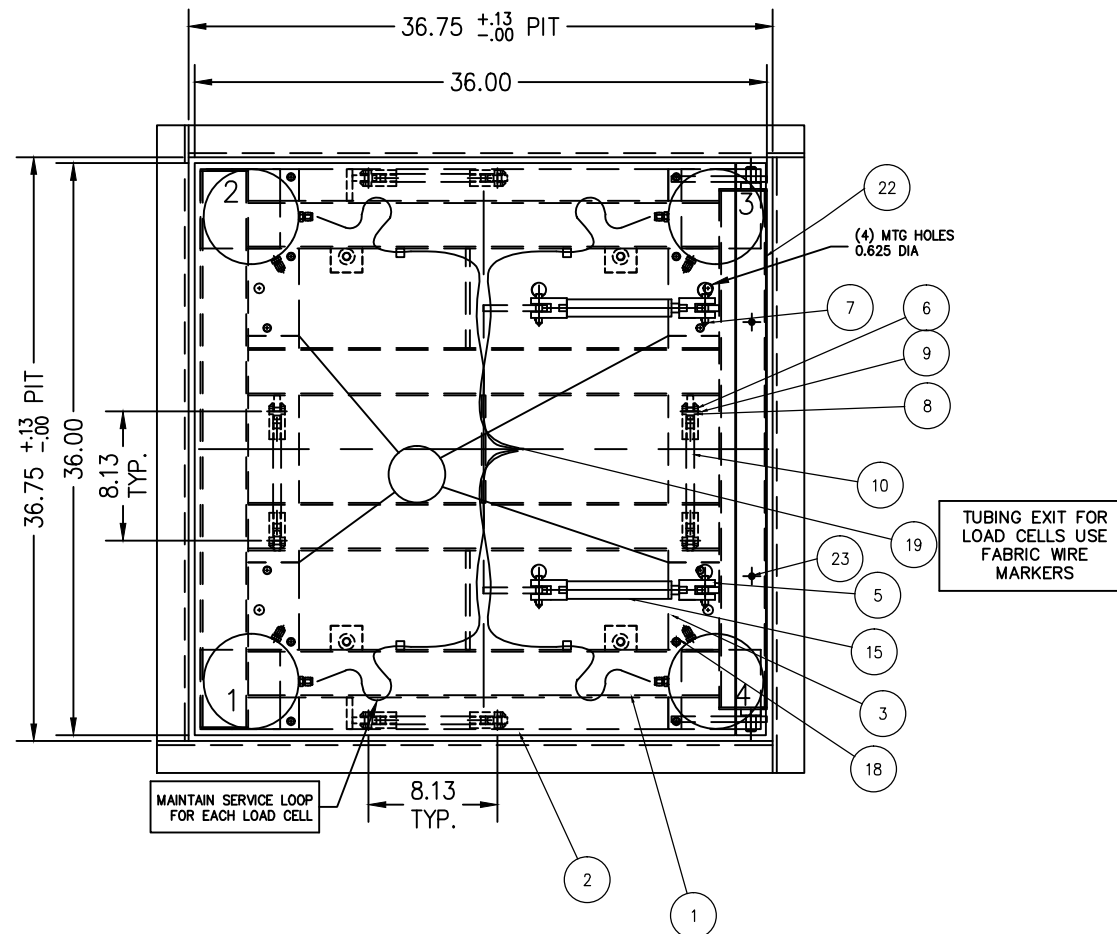


Parts List									
ITEM	QTY	NAME	DRAWING NO.	GRADE	SHAPE	UNIT WT.	SIZE	VENDOR	WEIGHT
1	1	DECK FRAME	D-74067	SS 304					94.0
2	1	LIFT DECK	D-74068	SS 304			0.25 X 36.00 X 34.00		101.0
3	1	BASE FRAME	D-74069	SS 304					65.0
4	4	LOAD CELL	B-34321	SS 304		13.00	102S-5.0, 14.8 SQ. IN.		52.0
5	4	CLEVIS	A-73497-2	SS 304			M10 X 1.5		
6	8	CLEVIS	A-34541-	SS 304					
7	4	QUICK RELEASE PIN	A-73067-3	SS 18-8			3/8"		
8	8	CLEVIS PIN	A-73067-1	SS 18-8			1/2"		
9	8	COTTER PIN	A-73068-3-A	SS 18-8			3/8-1/2		
10	4	STAYBAR		SS 304			0.500-20 UNF X 6.00 LG		
11	4	VERTICAL STOP		SS 304			0.500-20 UNF X 4.00 LG		
12	8	VS HEX NUT WELDMENT	A-35703	SS 304			0.500-20 UNF		
13	4	SHIM	A-73305	SS 304			0.06 X 6.00 X 7.00		
14	2	LASH	A-35557	SS 304					
15	2	GAS SPRING	A-73066-5	SS 316			500 LB.		
16	4	FHSCS		SS 304			0.250-20 UNC X 0.50		
17	8	HEX NUT, HALF		SS 304			0.500-20 UNF		
18	4	HHCS		SS 304			0.250-20 UNC X 0.50		
19	4	UNION	SS-200-6	SS 316					
20	2	EYE BOLT	A-73698-5	CS			0.625-11 UNC X 1.75		
21	1	PIT ARRANGEMENT	D-34687-A	SS 304			FOR 0.25 DECK PLATE		
22	1	SPACER BAR	B-74749	SS 304					
23	2	FHSCS		SS 304			0.375-16UNC X 1.00		



PRELIMINARY NOT FOR CONSTRUCTION. FOR ILLUSTRATION ONLY.

- SCALE MUST BE PLACED INTO PIT WITH DECK SET ASSEMBLED.
- ADD SHIMS AS REQUIRED UNDER SCALE BASE FRAME & TACK WELD.
- OPENING HAND FORCE 45 lb.
- FINISH: WHITE SAND BLAST TO (125 MIC).
- SEE PRODUCTION CONTROL DRAWING D-35654.

ALL SHARP CORNERS AND EDGES TO BE BROKEN		EMERY WINSLOW SCALE COMPANY SEYMOUR, CT U.S.A. TERRE HAUTE, IN.	
B	ITEM 22 & 23 ADDED	07/15	GWW
A	ITEM 4 WAS B-34326-2 & ITEM 5 WAS A-73469-2 IN ERROR	07/15	OEM
LTR	REVISION	DATE	BY
THIS DRAWING IS THE PROPERTY OF EMERY WINSLOW SCALE COMPANY SEYMOUR, CONNECTICUT. THE INFORMATION CONTAINED HEREIN IS CONFIDENTIAL AND IS NOT TO BE USED OR DISSEMINATED TO OTHERS WITHOUT THE EXPRESS WRITTEN CONSENT OF EMERY WINSLOW SCALE COMPANY.		CHECKED	DATE
		ACAD FILENAME: TD4213	
		LAYERS USED: ALL	
SCALE	FIRST USED ON	DRAWING NO.	REV.
**	D-74066	B	