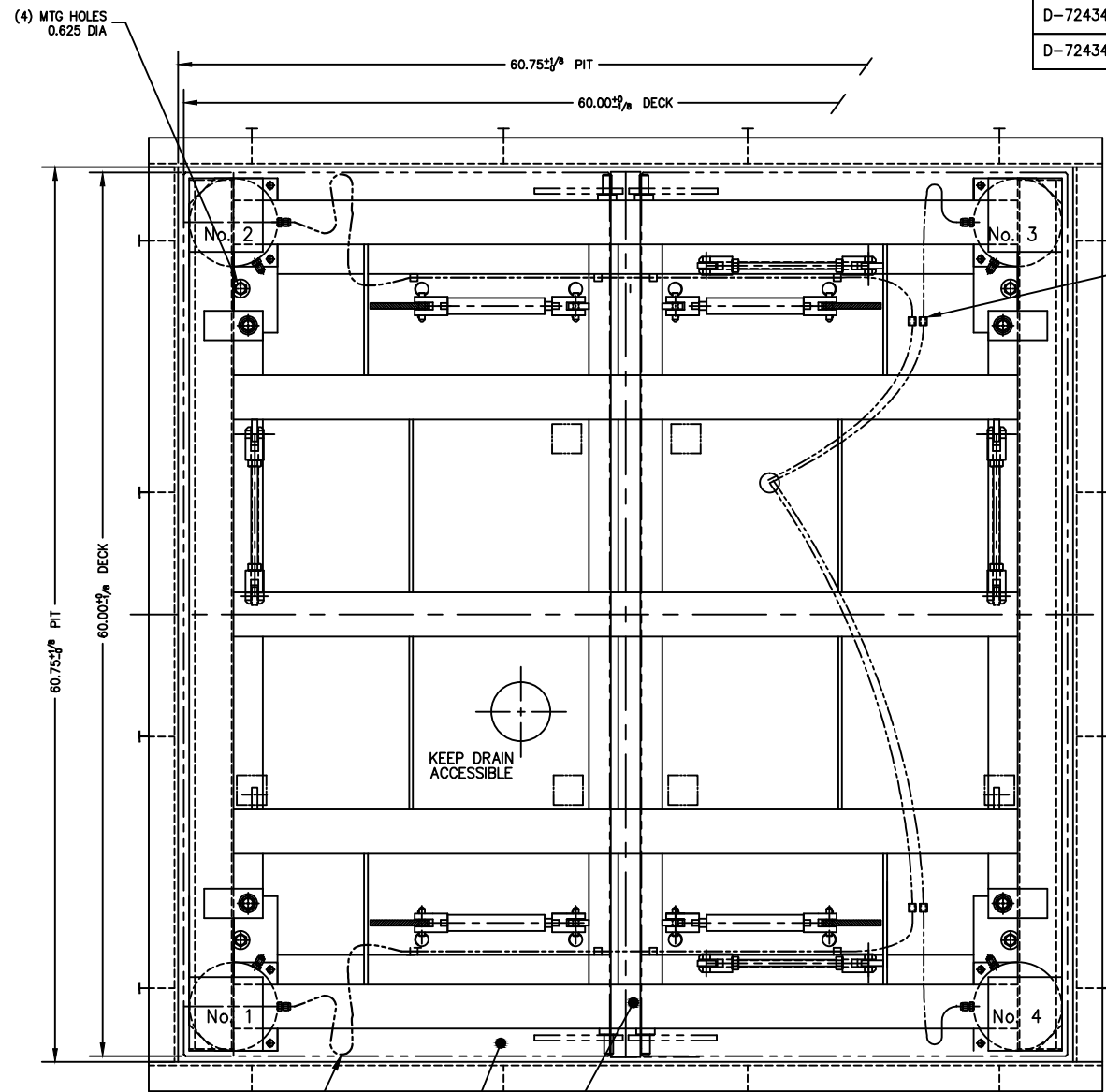
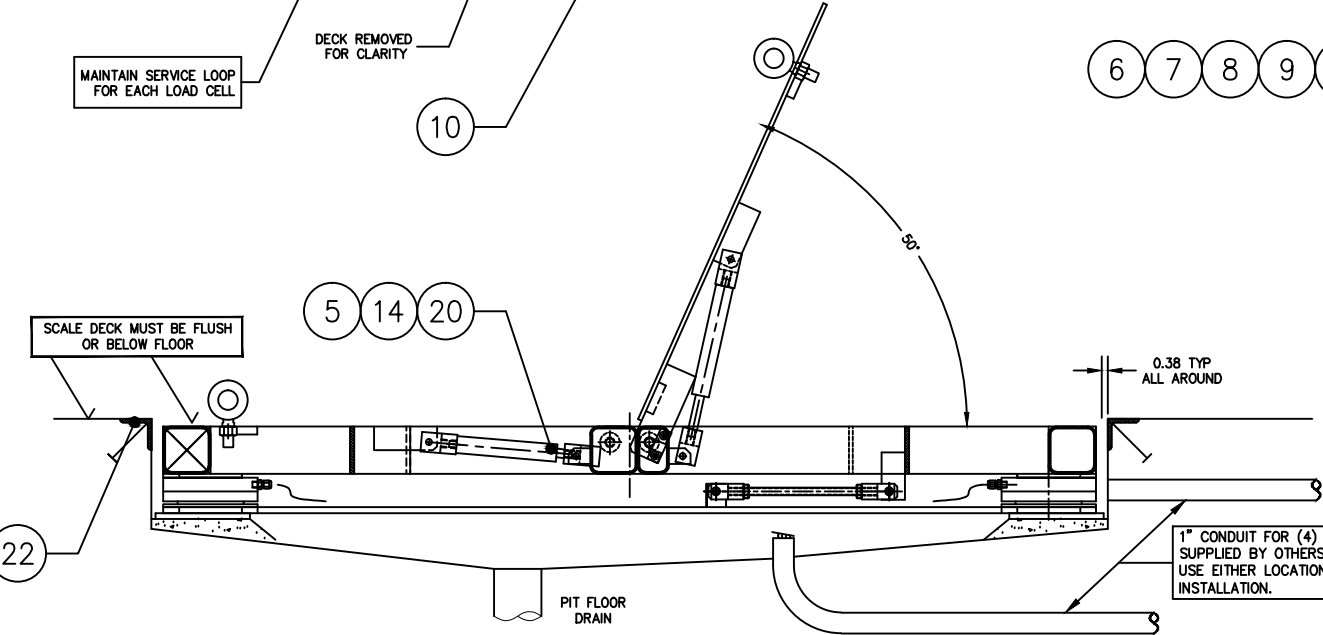
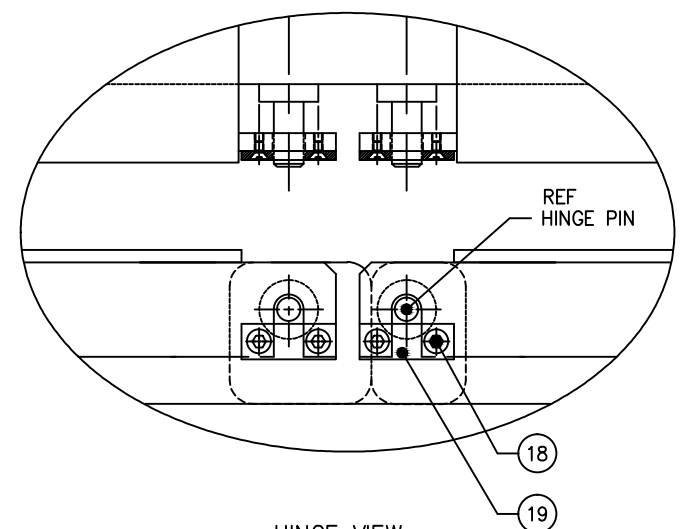
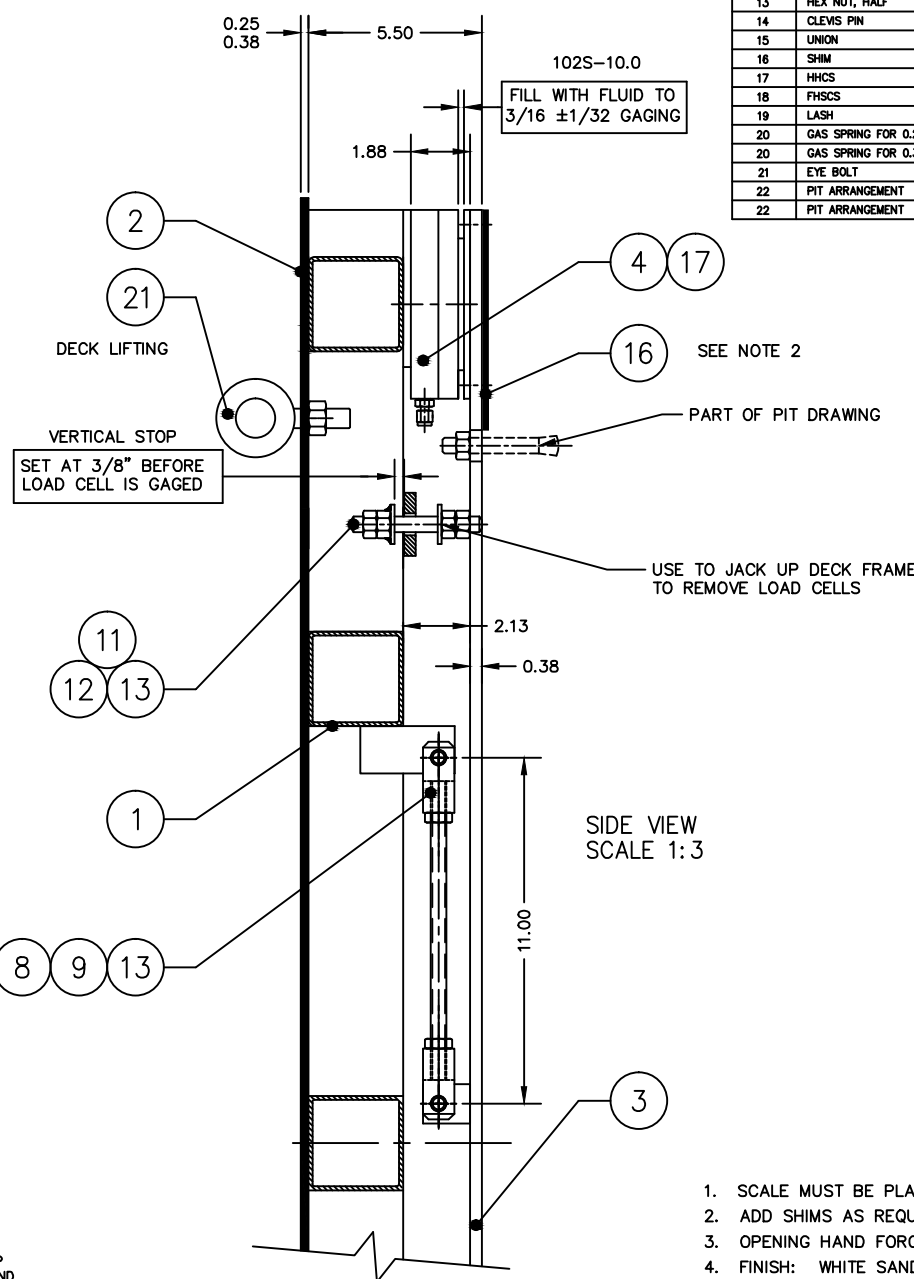


DASH NO.	LOAD CELL MODEL NO.	SCALE MODEL NO.	DEAD WEIGHT	CAPACITY
D-72434-1	102S-5.0-M2 B-34321	709-55-5	509 lb	5,000 lb 4,000 lb AXLE LOAD
D-72434-2	102S-10.0-M2 B-34321-1	709-55-10	587 lb	10,000 lb 8,000 lb AXLE LOAD
D-72434-3	102S-10.0-M2 B-34321-1	709-55-15	679 lb	15,000 lb 8,000 lb AXLE LOAD

ITEM NO.	DESCRIPTION	QTY	MATERIAL	UNIT WT.	PART NO.	SIZE	WT.
1	DECK FRAME	1	SS 304		D-72435-1		199
1	DECK FRAME	1	SS 304		D-72435-2		238
1	DECK FRAME	1	SS 304		D-72435-3		332
2	LIFT DECK SET	1	SS 304		D-36539	DECK PLATE AS PER FACTORY ORDER	272
3	BASE FRAME	1	SS 304		D-74543		101
4	LOAD CELL	4	SS 304		SEE TABLE		
5	ROD CLEVIS	8	SS 304		A-73497-2	M10 X 1.5	
6	ROD CLEVIS	8	SS 304		A-34541	0.500-20 UNF	
7	STAYBAR	4	SS 304		A-35900-1	(0.500-20 UNF X 8.75)	
8	CLEVIS PIN	8	SS 303		A-73067-1		
9	COTTER PIN	16	SS 304		A-73068-3-A		
10	SPACER BAR	1	SS 304		B-36498-4	(60.00 LG)	
11	VERTICAL STOP THRD ROD	4	SS 304			0.500-20 UNF X 4.00	
12	VS HEX NUT WELDMENT	8	SS 304		A-35703		
13	HEX NUT, HALF	16	SS 304			0.500-20 UNF	
14	CLEVIS PIN	8	SS 303		A-73067-3		
15	UNION	4	SS 316		SS-200-6	SWAGelok OR EQUAL	
16	SHIM	4	SS 304		A-73305		
17	HHCS	8	SS 304			0.250-20 UNC X 0.50	
18	FHSCS	8	SS 304			0.250-20 UNC X 0.50	
19	LASH	4	SS 304		A-35557		
20	GAS SPRING FOR 0.25 DECK	4	SS 316		A-73066-5		
20	GAS SPRING FOR 0.38 DECK	4	SS 316		A-73066-6		
21	EYE BOLT	2	CS		A-73698-5		
22	PIT ARRANGEMENT	1			D-34118	FOR 0.25 DECK PLATE	
22	PIT ARRANGEMENT	1			D-34118-1	FOR 0.38 DECK PLATE	



15  
TUBING EXIT FOR LOAD CELLS USE FABRIC WIRE MARKERS



- SCALE MUST BE PLACED INTO PIT WITH DECK SET ASSEMBLED.
- ADD SHIMS AS REQUIRED UNDER SCALE BASE FRAME & TACK WELD.
- OPENING HAND FORCE 45 lb.
- FINISH: WHITE SAND BLAST TO (125 MIC).
- SEE PRODUCTION CONTROL DRAWING D-35654.

PRELIMINARY NOT FOR CONSTRUCTION. FOR ILLUSTRATION ONLY.

REV	DESCRIPTION	DATE	BY
D	-3 ADDED	11/14	GW
C	ITEM 3 WAS D-36232, L/C WAS B-34321-1	07/14	GW
B	UPDATED CLEVISSES, BOM UPDATED & COTTER PIN DETAIL ADDED	02/12	CEM
A	ITEM 2 WAS D-36239	04/08	CEM

THIS DRAWING IS THE PROPERTY OF EMERY WINSLOW SCALE COMPANY SEYMOUR, CONNECTICUT. THE INFORMATION CONTAINED HEREIN IS CONFIDENTIAL AND IS NOT TO BE USED OR DISSEMINATED TO OTHERS WITHOUT THE EXPRESS WRITTEN CONSENT OF EMERY WINSLOW SCALE COMPANY.

DEBURR ALL CORNERS AND EDGES	11/17/08
DIMENSIONS ARE IN INCHES. TOLERANCES UNLESS SPECIFIED OTHERWISE:	
MACHINING	± .13
JXX = ± .01	
XXX = ± .005	
CHECKED: DATE:	
ACAD FILENAME: T02574	
LAYERS USED: ALL	

EMERY WINSLOW SCALE COMPANY		SEYMOUR, CT U.S.A TERRE HAUTE, IN.	
SCALE ASSEMBLY 709-55- WITH GAS SPRING LIFT DECK			
SCALE 1:6	FIRST USED ON	DRAWING NO. D-72434	REV D