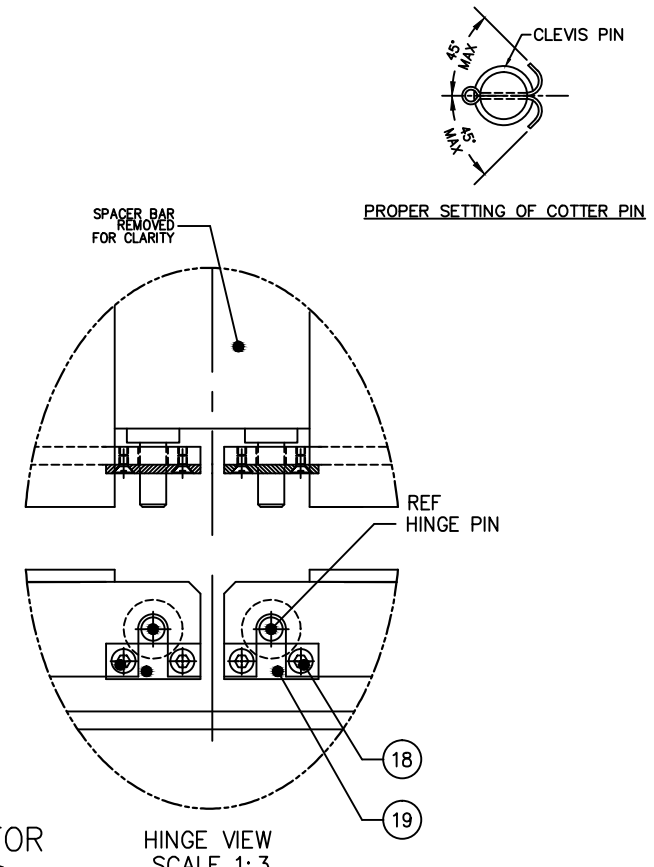
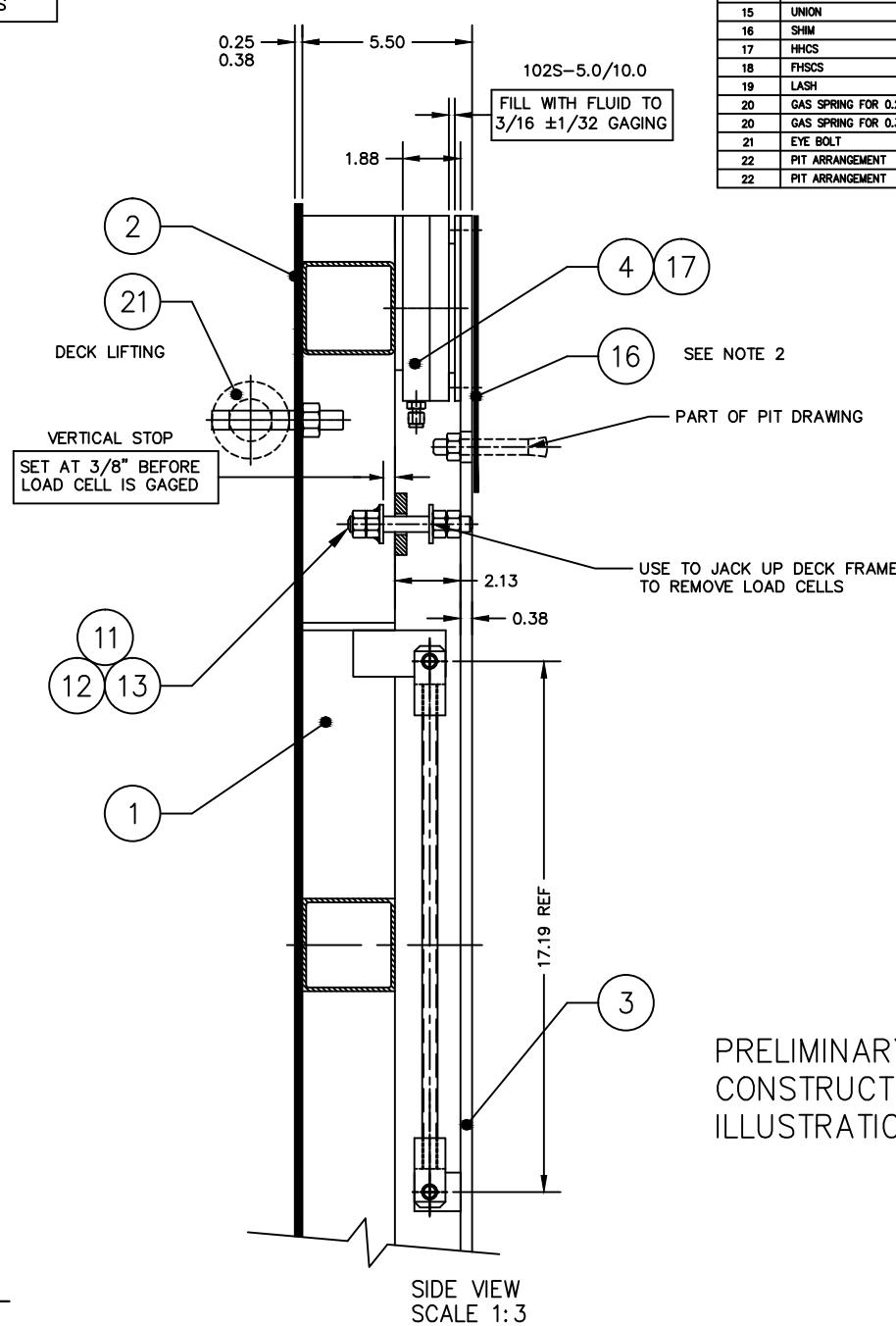
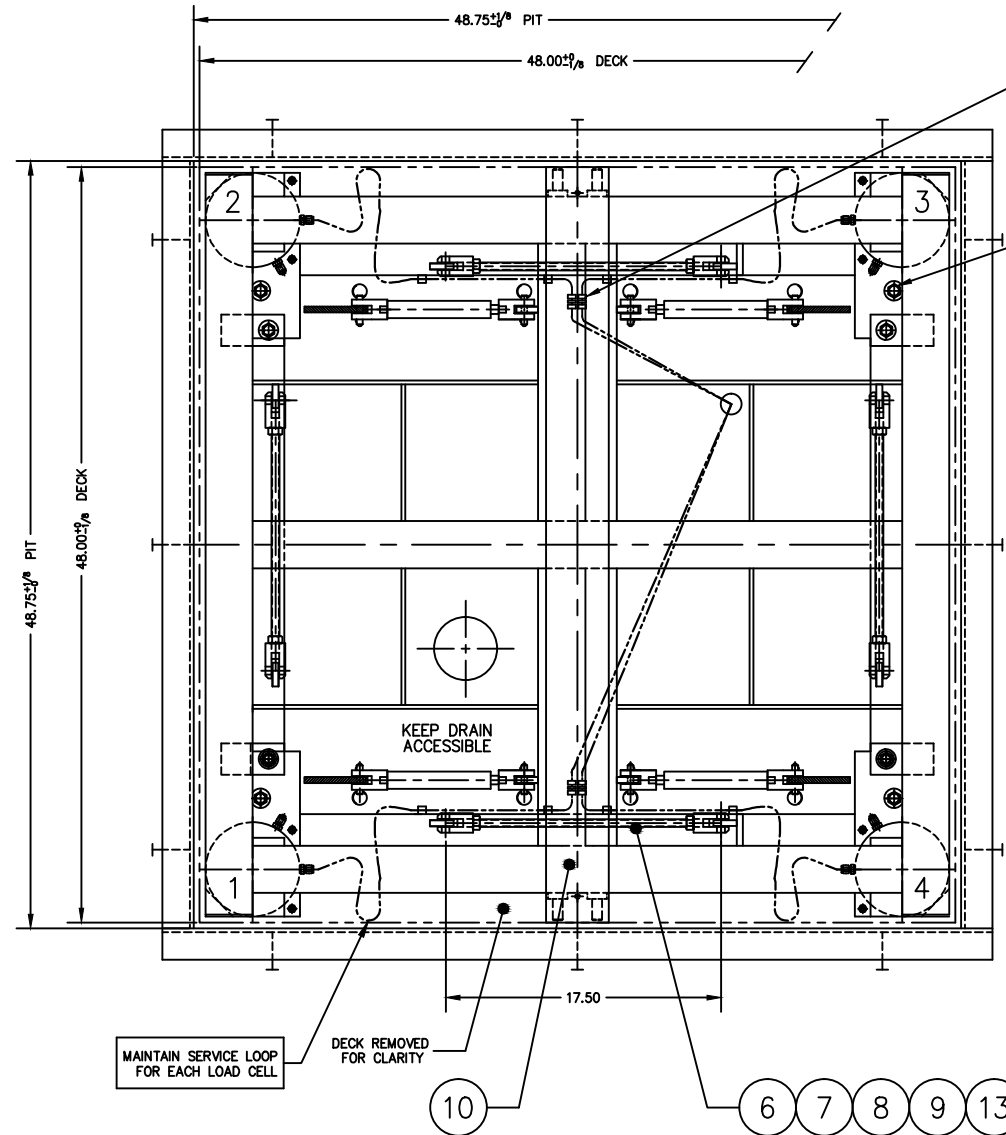
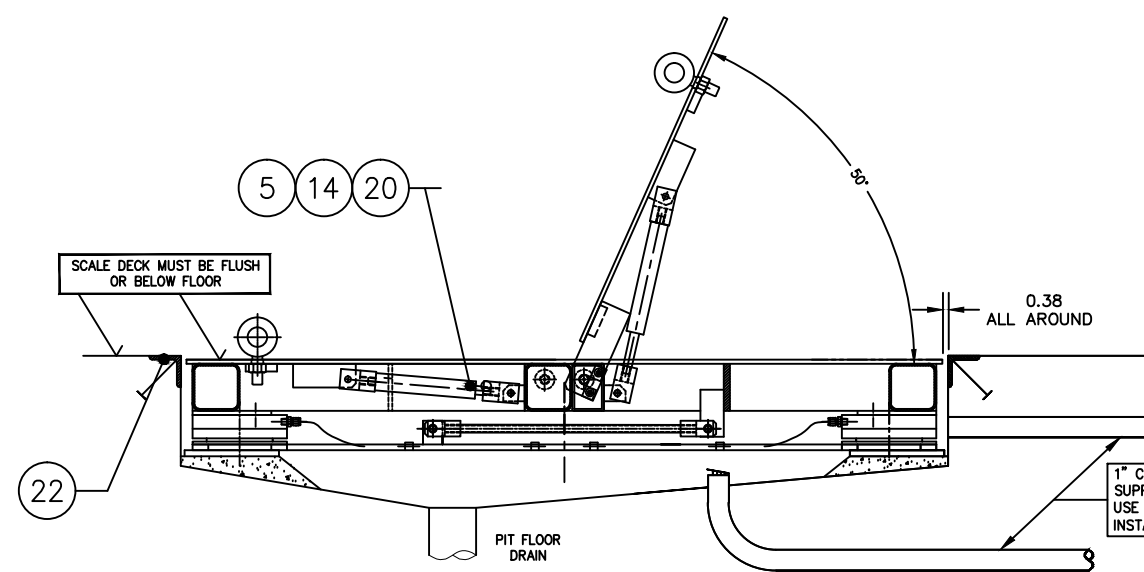


DASH NO.	LOAD CELL MODEL NO.	SCALE MODEL NO.	DEAD WEIGHT	CAPACITY	ITEM NO.	DESCRIPTION	QTY	MATERIAL	UNIT WT.	PART NO.	SIZE	WT.
D-36340-1	102S-5.0-M2 B-34321	709-44-5	320	2,000/5,000 lb 4,000 lb AXLE LOAD	1	DECK FRAME	1	SS 304		D-36342		157
D-36340-2	102S-10.0-M2 B-34321-1	709-44-10	320	10,000 lb 8,000 lb AXLE LOAD								
					2	LIFT DECK SET	1	SS 304		D-36343	PLATE AS PER FACTORY ORDER	172
					3	BASE FRAME	1	SS 304		D-36341		81
					4	LOAD CELL	4	SS 304		SEE TABLE		
					5	ROD CLEVIS	8	SS 304		A-73497-2	M10 X 1.5	
					6	ROD CLEVIS	8	SS 304		A-34541	0.500-20 UNF	
					7	STAYBAR	4	SS 304		A-35900-4	(0.500-20 UNF X 15.25)	
					8	CLEVIS PIN	8	SS 18-8		A-73067-1		
					9	COTTER PIN	8	SS 18-8		A-73068-3-A		
					10	SPACER BAR	1	SS 304		B-36498-3		
					11	VERTICAL STOP THRD ROD	4	SS 304			0.500-20 UNF X 4.00	
					12	VS HEX NUT WELDMENT	8	SS 304		A-35703		
					13	HEX NUT, HALF	16	SS 304			0.500-20 UNF	
					14	QUICK RELEASE PIN	8	SS 18-8		A-73067-3		
					15	UNION	4	SS 316		SS-200-6	SWAGelok OR EQUAL	
					16	SHIM	4	SS 304		A-73305		
					17	HHCS	8	SS 304			0.250-20 UNC X 0.50	
					18	FHSCS	8	SS 304			0.250-20 UNC X 0.50	
					19	LASH	4	SS 304		A-35557		
					20	GAS SPRING FOR 0.25 DECK	4	SS 316		A-73066-1		
					20	GAS SPRING FOR 0.38 DECK	4	SS 316		A-73066-3		
					21	EYE BOLT	2	CS		A-73698-5	0.625-11UNC	
					22	PIT ARRANGEMENT	1			D-34500	FOR 0.25 DECK PLATE	
					22	PIT ARRANGEMENT	1			D-34500-1	FOR 0.38 DECK PLATE	



PRELIMINARY NOT FOR CONSTRUCTION. FOR ILLUSTRATION ONLY.

- SCALE MUST BE PLACED INTO PIT WITH DECK SET ASSEMBLED.
- ADD SHIMS AS REQUIRED UNDER SCALE BASE FRAME & TACK WELD.
- OPENING HAND FORCE 45 lb.
- FINISH: WHITE SAND BLAST TO (125 MIC).
- SEE PRODUCTION CONTROL DRAWING D-35654.



E	L/C CALL OUT FOR -1 WAS 102-10.0	5/27/14	CEM	DEBURR ALL CORNERS AND EDGES	EMERY WINSLOW SCALE COMPANY SEYMOUR, CT U.S.A TERRE HAUTE, IN.
D	L/C CALL OUT FOR -1 WAS 102-3.5	3/28/14	CEM	DIMENSIONS ARE IN INCHES. TOLERANCES UNLESS SPECIFIED OTHERWISE:	
C	CLEVISES IN TOP VIEW UPDATED, BOM UPDATED, DOUBLE HINGE PINS SHOWN	11/11	CEM	MACHINING	
B	ITEM 20 (38) P.# WAS 1185-SSHD-2.5-360, /Z SHOWN ON END VIEW, ITEM 22 D-34500-1 ADDED	6/30/06	CEM	FABRICATION	
A	REVISED	6/10/06	OT	.XX = ± .01 ± .13 .XXX = ± .005	SCALE FIRST USED ON DRAWING NO. D-36340
REV	DESCRIPTION	DATE	BY	DRAWN:CEM/OT DATE: 6/7/06	SCALE 1:6
THIS DRAWING IS THE PROPERTY OF EMERY WINSLOW SCALE COMPANY SEYMOUR, CONNECTICUT. THE INFORMATION CONTAINED HEREIN IS CONFIDENTIAL AND IS NOT TO BE USED OR DISSEMINATED TO OTHERS WITHOUT THE EXPRESS WRITTEN CONSENT OF EMERY WINSLOW SCALE COMPANY.				CHECKED: DATE: ACAD FILENAME: ACO1410 LAYERS USED: ALL	REV E