

RUN TUBING SO AS TO MINIMIZE THE NUMBER OF BENDS

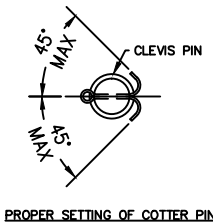
CONFIGURED W/O ITEM 24

SEE TUBING NOTES

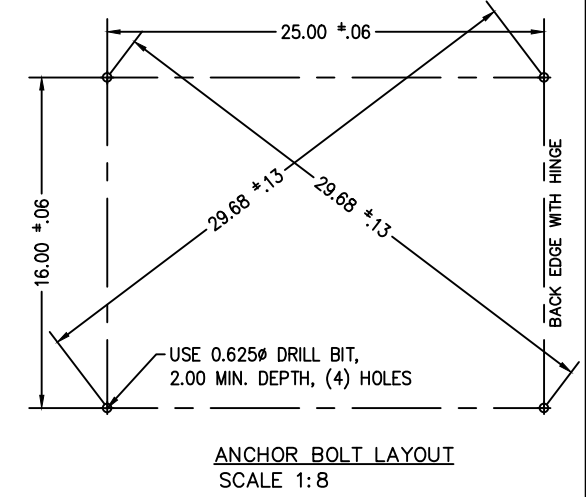
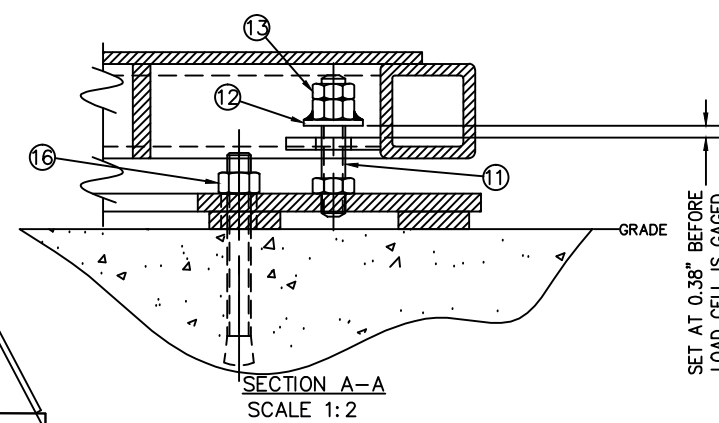
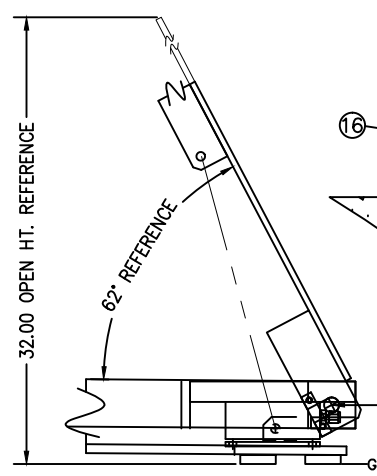
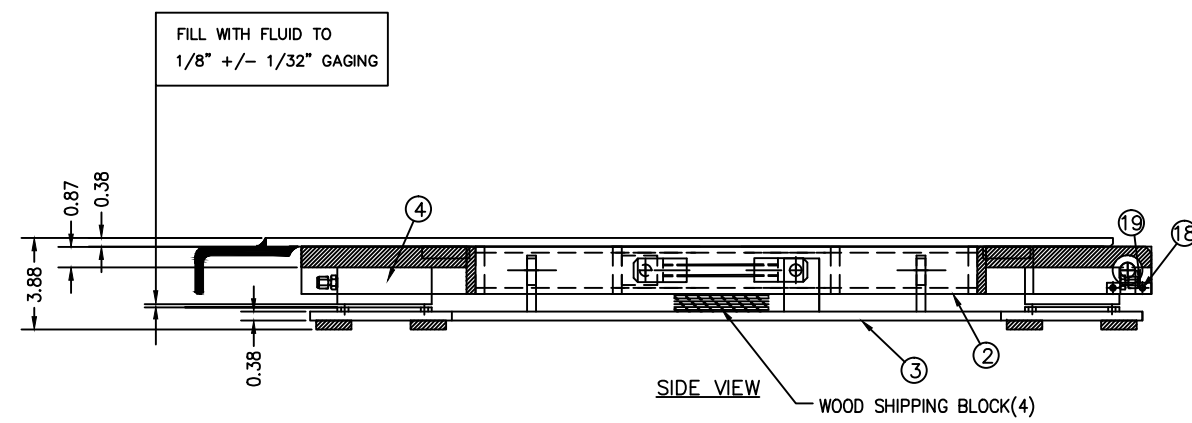
"LOOSE" END

ITEM NO.	DESCRIPTION	QTY	MATERIAL	UNIT WT.	PART NO.	SIZE	WT.
1	DECK LID	1	SS 304		D-74117-		153
2	DECK FRAME	1	SS 304		D-74116		144
3	BASE FRAME	1	SS 304		D-74118		66
4	LOAD CELL	4	SS 304		B-34321	102S-5.0-M2	
5	ROD CLEVIS	4	SS 304		A-34541-2	M10 X 1.5	
6	ROD CLEVIS	8	SS 304		A-34541	0.500-20 UNF	
7	STAYBAR	4	SS 304			0.500-20 UNF X 4.75	
8	OMIT						
9	CLEVIS PIN	8	SS 303		A-73067-1	0.50 DIA X 1.19 GRIP LENGTH	McMASTER CARR
10	COTTER PIN	8	SS 304		A-73068-3-A		McMASTER CARR
11	VERTICAL STOP THRD ROD	4	SS 304		0.500-20 UNF X 3.00		
12	VS HEX NUT WELDMENT	4	SS 304		A-35703		
13	HEX NUT, HALF	4	SS 304		0.500-20 UNF		
14	QUICK RELEASE PIN	4	SS 304		A-73067-3	0.38 DIA X 1.2 GRIP LENGTH	McMASTER CARR
15	UNION	4	SS 316		SS-200-6	(OMIT FOR -1)	SWAGelok OR EQUAL
16	ANCHOR BOLT (KWIK BOLT 3)	4	SS 304		0.50 X 4.50		HILTI OR EQUAL
17	HHCS	12	SS		0.250-20 UNC X 0.50		
18	FHSCS	4	SS		0.250-20 UNC X 0.50		
19	LASH	2	SS 304		A-35557		
20	GAS SPRING	2	SS 316		A-73066-6	582 LB FORCE	
21	HYTRONIC TUBING	A/R	SS 316		A-35251	0.13 OD	
22	OMIT						
23	OMIT						
D-74115-1	24	TUBING ASSEMBLY	1	TEFLON	A-35629-MP	OPTIONALLY SUPPLIED	

- D-74115-1 TEFLON TUBING NOTES:
- 316 SS TO FIRST SET OF UNIONS.
 - TEFLON LOOPS TO SECOND SET OF UNIONS.
 - ORIENTATE LOOP SO "LOOSE" END CAN BE PULLED OUT THE SIDE AS SHOWN.
 - USE TIE-WRAPPS TO SECURE TEFLON (4) PLACES TO DECK FRAME FOR SHIPPING. (NOT TOO TIGHT)



- NOTES:
- CAUTION: WHEN USING FORK LIFT TO MOVE SCALE ADD SHIPPING BLOCKS AS SHOWN.
 - SEE PRODUCTION CONTROL DRAWING D-35654.
 - AXLE LOAD 4000 lb
 - OPENING HAND FORCE 45 lb, REF.
 - FINISH: WHITE SAND BLAST TO (125 MIC).



PRELIMINARY NOT FOR CONSTRUCTION. FOR ILLUSTRATION ONLY.

REV	DESCRIPTION	DATE	BY
C	TUBING EXIT MOVED TO REAR OF SCALE	07/14	GWV
B	ITEMS 8,22&23 OMITTED, ITEM 16 WAS 2.25 LG, ITEM 4 WAS B-34321-1 (102S-10.0)	04/14	CEM
A	TEFLON TUBING NOTES SPECIFIED FOR -1	12/13	CEM

ALL SHARP CORNERS AND EDGES TO BE BROKEN		EMERY WINSLOW SCALE COMPANY SEYMOUR, CT U.S.A TERRE HAUTE, IN.	
DIMENSIONS ARE IN INCHES. TOLERANCES UNLESS SPECIFIED OTHERWISE: MACHINING .XX = ± .01 .XXX = ± .005		SCALE ASSEMBLY 708S-33-2-GS WITH SINGLE LIFT DECK	
DRAWN: GWV	DATE: 12/11/12	SCALE: 1:4	FIRST USED ON: D-74115-
CHECKED:	DATE:	DRAWING NO.:	REV: C
ACAD FILENAME: T04262			
LAYERS USED: ALL			