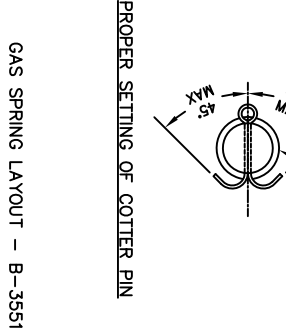
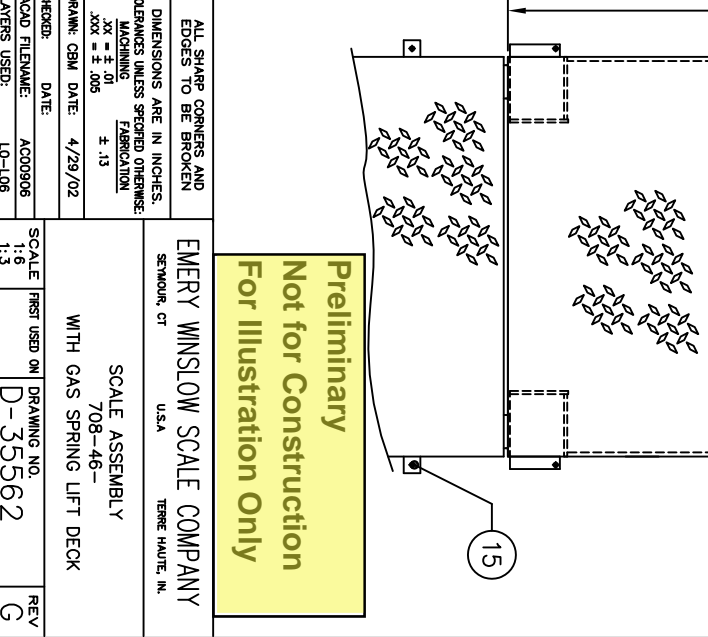
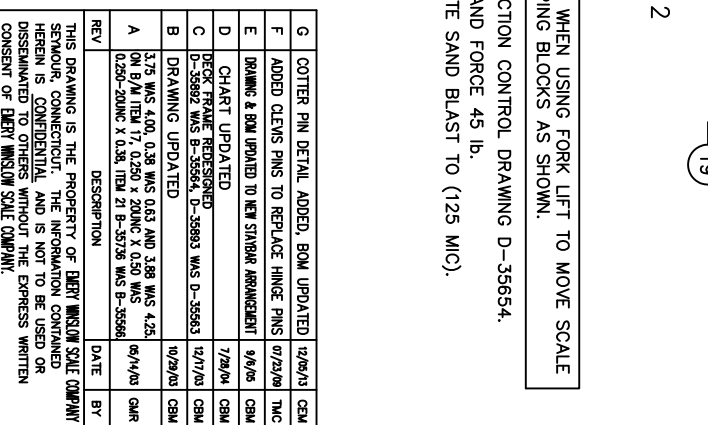
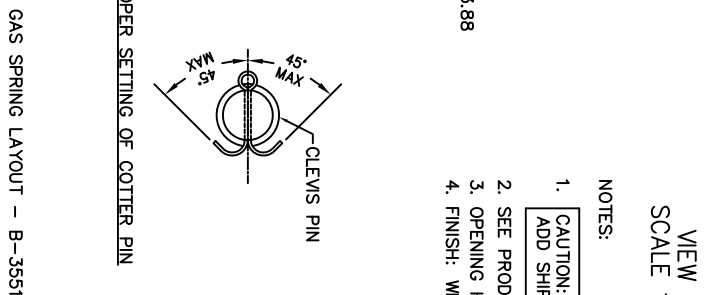
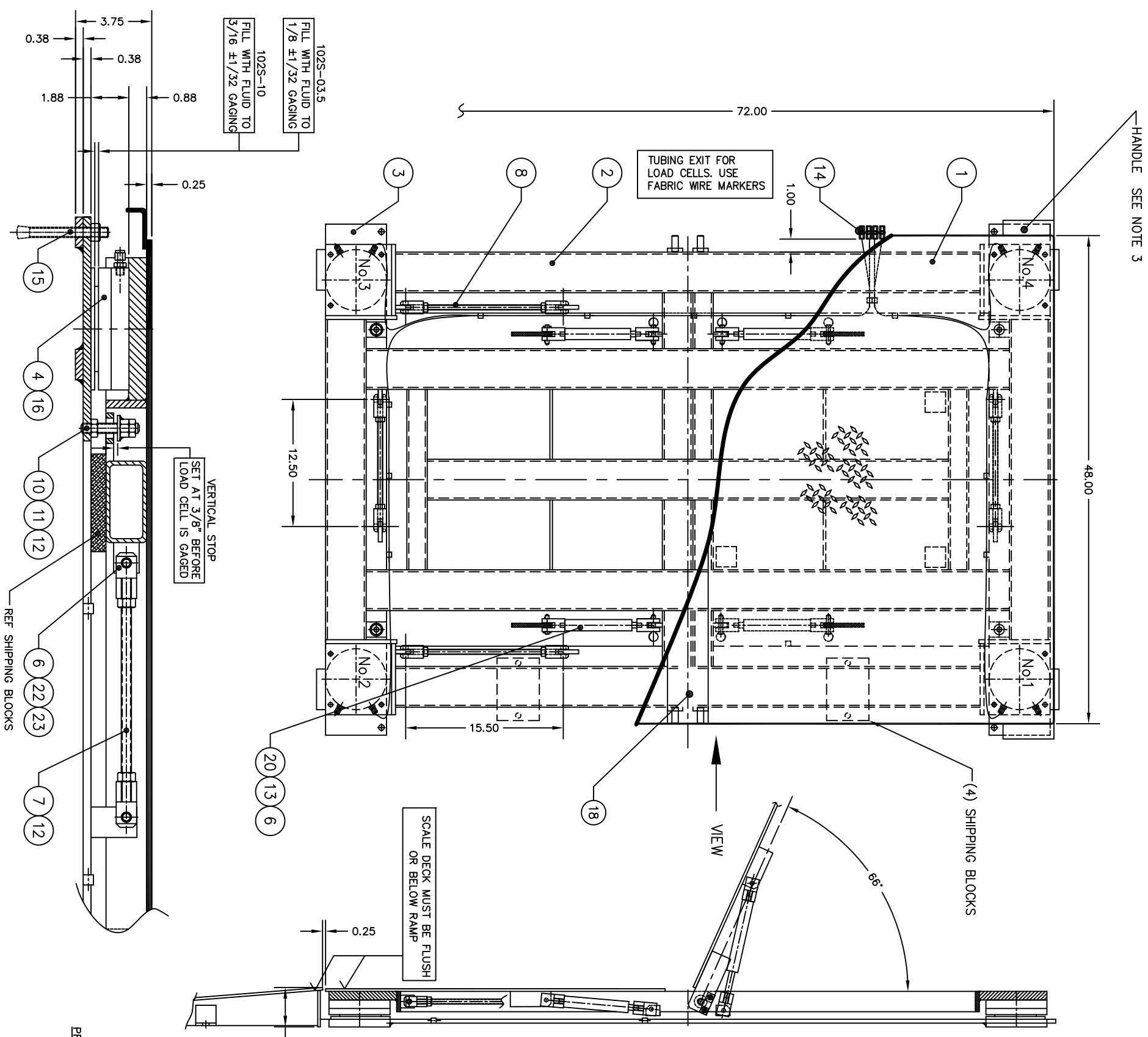


DASH NO.	LOAD CELL MODEL NO.	SCALE MODEL NO.	DEAD WEIGHT	CAPACITY
D-35562-1	B-34326-2	708-46-2	472 lb	2,000 LB AXLE LOAD
D-35562-2	B-34321-1	708-46-5	472 lb	2,000 LB AXLE LOAD
B-34321-1	102S-10.0-M2	708-46-10	4,000 LB	4,000 LB AXLE LOAD
102S-10.0-M2			4,000 LB	4,000 LB AXLE LOAD

ITEM NO.	DESCRIPTION	QTY	MATERIAL	UNIT WT.	PART NO.	SIZE	WT.
1	LIFT DECK SET	1	SS 304		B-35893 (0.25)	(4 WAY SAFETY PLATE - OPTIONAL)	272
2	DECK WELDMENT	1	SS 304		D-35892		215
3	BASE FRAME WELDMENT	1	SS 304		D-35525		117
4	LOAD CELL	4	SS 304		SEE CHART		
5	ROD CLEVIS	8	SS 304		A-73497-2	M10 X 1.5	
6	ROD CLEVIS	8	SS 304		A-34541	0.500-20 UNF	
7	STAYBAR	2	SS 304		A-35900-2	0.500-20 UNF X 10.25	
8	STAYBAR	2	SS 304		A-35900-3	0.500-20 UNF X 13.25	
9							
10	VERTICAL STOP THRD ROD	4	SS 304		A-35900-5	0.500-20 UNF X 2.75	
11	VS HEX NUT WELDMENT	4	SS 304		A-35703	0.500-20 UNF	
12	HEX NUT, HALF	16	SS 304			0.500-20 UNF	
13	CLEVIS PIN	8	SS 303		A-73067-3	SWAGelok OR EQUAL	
14	UNION	4	SS 316		SS-200-6	HILT OR EQUAL	
15	ANCHOR BOLT 0.50 X 4.50	4 + A/R	SS 304		KB11304SS12-412	0.250-20 UNC X 0.50	
16	HHCS	8	SS 304			0.250-20 UNC X 0.50	
17	FHSOS	8	SS 304		B-35558-1	0.250-20 UNC X 0.50	
18	SPACER BAR	1	SS 304		A-35557		
19	LASH	4	SS 304		A-73066-3		
20	GAS SPRINGS	4	SS 316		B-35736		
21	RAMP	A/R	SS 304		A-73067-1		
22	CLEVIS PIN	8	SS 303		A-73068-3-A		
23	COTTER PIN	16	SS 304				



NOTES:

- CAUTION: WHEN USING FORK LIFT TO MOVE SCALE ADD SHIPPING BLOCKS AS SHOWN.
- SEE PRODUCTION CONTROL DRAWING D-35654.
- OPENING HAND FORCE 45 lb.
- FINISH: WHITE SAND BLAST TO (125 MIC).

REV	DESCRIPTION	DATE	BY
A	1.75 WAS 4.00, 0.38 WAS 0.63 AND 3.88 WAS 4.25	02/14/03	GMK
B	ON B/A ITEM 17, 0.250 X 2.000 X 0.500 WAS B-35894	12/17/03	GMK
C	D-35892 WAS B-35954, D-35893 WAS D-35663	10/29/03	GMK
D	DRAWING UPDATED		
E	CHART UPDATED	7/28/04	GMK
F	DRAWING & BOM UPDATED TO NEW SHIPPING ARRANGEMENT	09/06/06	TMC
G	COTTER PIN DETAIL ADDED, BOM UPDATED	12/06/13	GMK

THIS DRAWING IS THE PROPERTY OF EMERY WINSLOW SCALE COMPANY. SENIOR, CONNECTICUT. THE INFORMATION CONTAINED HEREIN IS CONFIDENTIAL, AND IS NOT TO BE USED OR DISSEMINATED TO OTHERS WITHOUT THE EXPRESS WRITTEN CONSENT OF EMERY WINSLOW SCALE COMPANY.

ALL SHARP CORNERS AND EDGES TO BE BROKEN TO DIMENSIONS ARE IN INCHES. TOLERANCES UNLESS SPECIFIED OTHERWISE: MACHINING ±.13
XXX ±.005
DRAWN: GMK DATE: 4/29/02
CHECKED: AC00906
SCALE: FIRST USED ON D-35562
SCALE ASSEMBLY 708-46- WITH GAS SPRING LIFT DECK
EMERY WINSLOW SCALE COMPANY
SHELTON, CT U.S.A.
TERRE HAUTE, IN. U.S.A.

**Preliminary
Not for Construction
For Illustration Only**

SCALE SPRING LAYOUT - B-35517