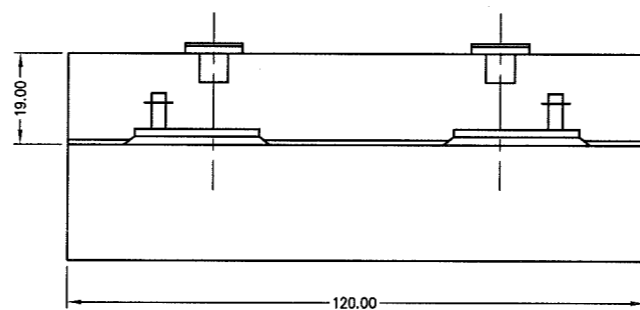
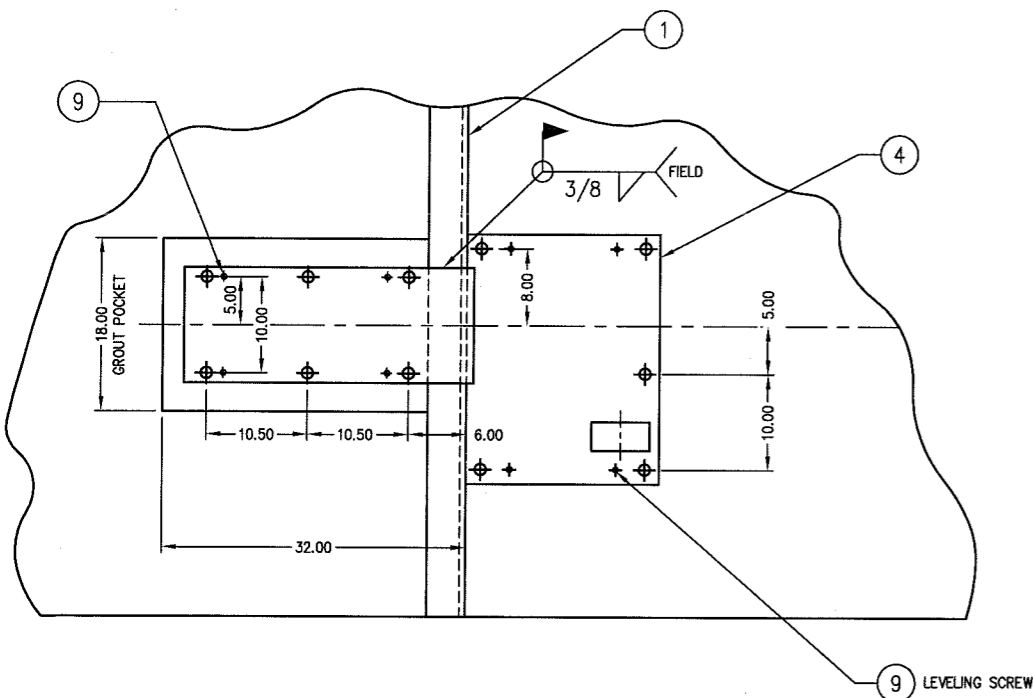


NOTE: PILING DESIGN BY OTHERS

FOR REFERENCE ONLY
Not for Construction

CUSTOMER: PHENOLCHEMIE
MOBILE, AL.
A.R.E.A. RAIL 115 LB

				ALL SHARP CORNERS AND EDGES TO BE BROKEN		EMERY WINSLOW SCALE COMPANY SEYMOUR, CT U.S.A. TERRE HAUTE, IN.	
				DIMENSIONS ARE IN INCHES.		MULTI-MODULE RAILROAD TRACK SCALE 66-170-12.5/25 ABOVE GROUND FOUNDATION PLAN	
				TOLERANCES UNLESS SPECIFIED OTHERWISE:			
				MACHINING ± .010			
				FABRICATION ± .13			
				XX = ± .010			
				XXX = ± .005			
THIS DRAWING IS THE PROPERTY OF EMERY WINSLOW SCALE COMPANY, SEYMOUR, CONNECTICUT. THE INFORMATION CONTAINED HEREIN IS CONFIDENTIAL AND IS NOT TO BE USED OR DISSEMINATED TO OTHERS WITHOUT THE EXPRESS WRITTEN CONSENT OF EMERY WINSLOW SCALE COMPANY.				DRAWN: JDS DATE: 2/29/99		SCALE: 1:50	
REV A PIT DEPTH CHANGED				5/25/99 JDS		FIRST USED ON: J-16420	
REV DESCRIPTION				DATE BY		DRAWING NO. D-35205	
						SHT 1/2	
						REV A	



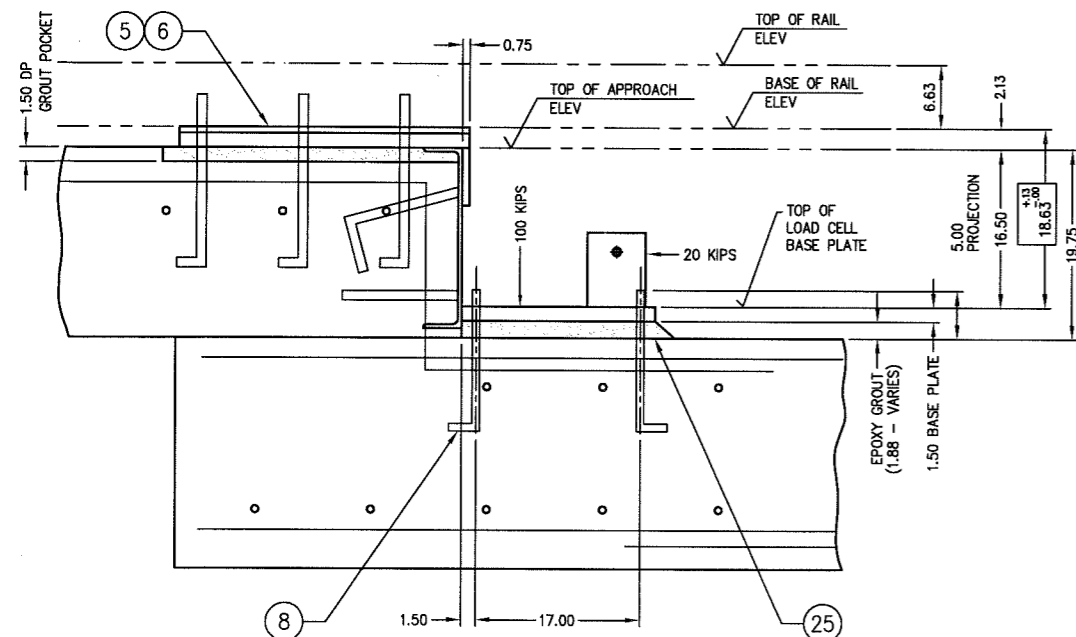
SECTION C-C
SCALE 1:20

ITEM NO	DESCRIPTION	QTY	MATERIAL	UNIT WT	PART NO	SIZE	WT
1	END COPING	4	CS		C-35078		
2							
3	LOAD CELL BASE PLATE CTR	2	CS		B-35160	1.50 X 19.00 X 28.00	
4	LOAD CELL BASE PLATE	4/4	CS		B-35229-1,-2	1.50 X 20.00 X 26.00	
5	RAIL BASE PLATE #115 LB.	8	CS		B-35103	1.50 X 12.00 X 30.00	
6	WEAR PLATE #115 LB	8	CS		B-35102	0.63 X 12.00 X 30.00	
7							
8	ANCHOR BOLT (W/NUT)	100	CS/ZN			1.00-8UNC X 18.00 5.00 THREAD	
9	HHCS	72	CS			0.500-13 UNC X 4.00 FULL THREAD (LEVELING)	
10	RAIL CLIP	48	CS		No 62	TROMAR	
11	HHCS	48	CS/ZINC			1.00-8 UNC X 2.50 TYPE A-325	
12	LOCKWASHER	48	CS/ZINC			1.00	
13	HEX HEAD NUT	• 12	CS/ZINC			1.00-8 UNC	
14	ANTI-CREEP #115 LB	• 12	CS			L 0.38 X 3.50 X 3.50 X 28.00	
15	RAIL SPACER	• 24	CS			A-35068 1.50 OD TUBING X 0.234 WALL	
16	HHCS	• 12	CS/ZINC			1.00-8 UNC X 5.00 GRADE 8	
17	RAIL CLIP	• 144	CS		No 62	TROMAR	
18	ANCHOR BOLT (W/NUT)	• 144	CS			1.00-8UNC X 18.00 5.00 THREAD	
19	APPROACH RAIL BASE #115 LB.	• 36	CS		B-35066	0.75 X 12.00 X 28.00	
20	HHCS	• 144	CS/ZINC			0.500-13 UNC X 4.00 FULL THREAD	
21							
22							
23							
24	FIVE STAR GROUT (CEMENT)		(NON-SHRINK)			FIVE STAR PRODUCTS, FAIRFIELD, CT.	BY OTHERS
25	FIVE STAR GROUT (EPOXY)		(NON-SHRINK)			FIVE STAR PRODUCTS, FAIRFIELD, CT.	BY OTHERS

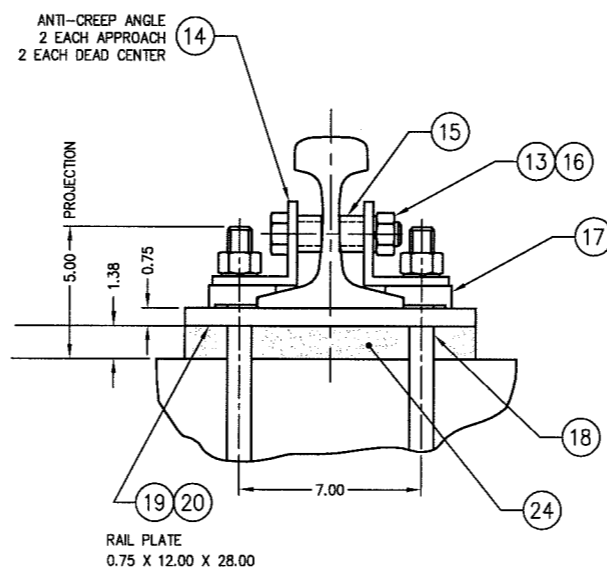
* SUPPLIED OPTIONALLY

GENERAL NOTES:

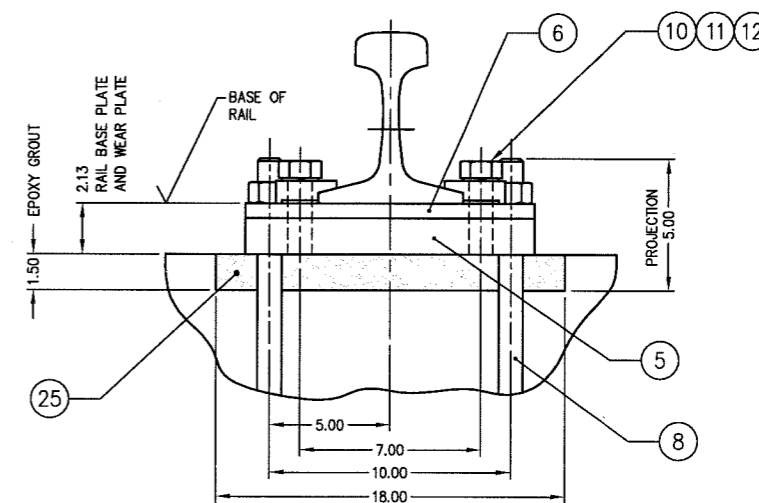
- ALL CONSTRUCTION AND FOUNDATION MATERIALS MUST BE IN ACCORDANCE WITH A.A.R. SCALE HANDBOOK 1997 EDITION.
- THE FOUNDATION DESIGN IS BASED ON A SOIL BEARING CAPACITY OF AT LEAST 4,000 LB PER SQ FT.
- A SOIL ANALYSIS OF THE INSTALLATION MUST BE COMPLETED SO AS TO DETERMINE THE ACTUAL SOIL BEARING CAPACITY. IF SOIL DOES NOT HAVE BEARING CAPACITY OF AT LEAST 4,000 LB PER SQ FT, AND ITS BEARING CAPACITY CANNOT BE INCREASED BY DRAINAGE, STABILIZATION, OR OTHER MEANS, PILE FOUNDATION SHALL BE PROVIDED.
- CONCRETE SPECIFICATION:
COMPRESSIVE STRENGTH OF 4,000 PSI AT 28 DAYS. MAXIMUM SIZE AGGREGATE TO BE 3/4 STONE.
AIR ENTRAINED AND PLACED IN ACCORDANCE WITH ACI STD. 318-89.
- REBAR:
5.1 MINIMUM BAR OVERLAP OF 36 INCHES
5.2 EMBEDMENT: 3 INCHES AGAINST EARTH
2 INCHES AGAINST EXPOSED SURFACES OR FORMS.
5.3 DEFORMED BILLET STEEL CONFORMING TO ASTM SPECIFICATION A-615, GRADE 60.
- GROUT:
6.1 ALL BASE PLATES PLACED ON NON-SHRINK EPOXY GROUT.



SECTION D-D
SCALE 1:10



APPROACH SLAB
SECTION A-A
SCALE 1:4



SECTION B-B
SCALE 1:4

CUSTOMER: PHENOLCHEMIE
MOBILE, AL
A.R.E.A. RAIL 115 LB

FOR REFERENCE ONLY
Not for Construction

		ALL SHARP CORNERS AND EDGES TO BE BROKEN		EMERY WINSLOW SCALE COMPANY SEYMOUR, CT U.S.A TERRE HAUTE, IN.	
		DIMENSIONS ARE IN INCHES. TOLERANCES UNLESS SPECIFIED OTHERWISE:		MULTI-MODULE RAILROAD TRACK SCALE MODEL 66-170-12.5/25 ABOVE GROUND FOUNDATION SECTION	
A	PIT DEPTH CHANGED	5/25/99	JDS	MACHINING XX = ± .010 XXX = ± .005	± .13
REV	DESCRIPTION	DATE	BY	DRAWN: JDS DATE: 2/20/99	CHECKED: DATE:
THIS DRAWING IS THE PROPERTY OF EMERY WINSLOW SCALE COMPANY SEYMOUR, CONNECTICUT. THE INFORMATION CONTAINED HEREIN IS CONFIDENTIAL AND IS NOT TO BE USED OR DISSEMINATED TO OTHERS WITHOUT THE EXPRESS WRITTEN CONSENT OF EMERY WINSLOW SCALE COMPANY.				ACAD FILENAME: AC00631	SCALE AS NOTED
				LAYERS USED: 2,3	FIRST USED ON J-16420
				DRAWING NO. D-35205	REV A
				SHT 2/2	