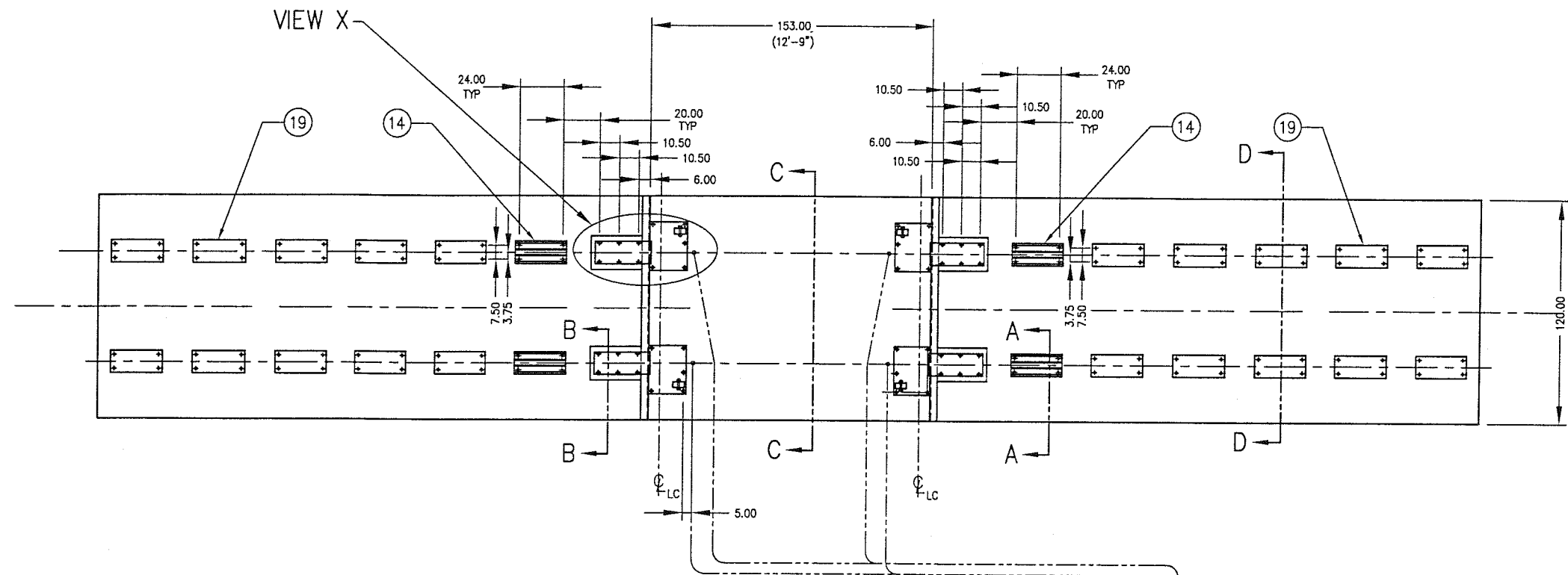
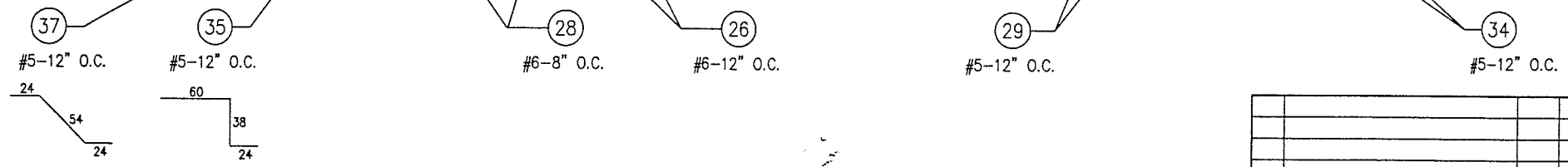
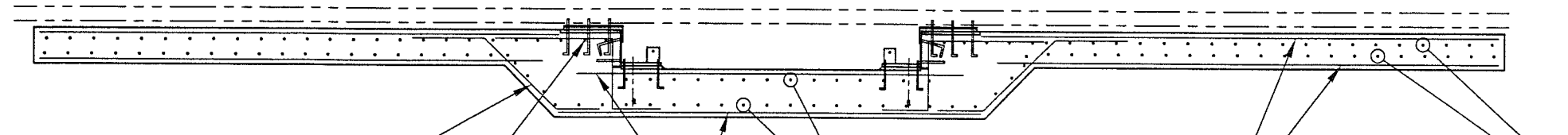
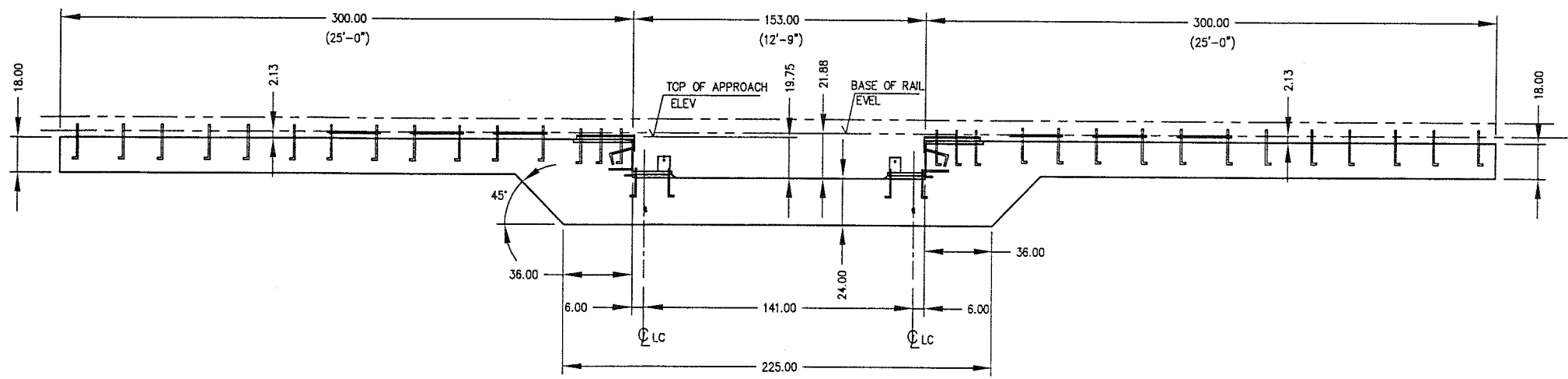


| ITEM NO. | DESCRIPTION | QTY | MATERIAL | UNIT WT. | PART NO. | SIZE | WT. |
|----------|-------------|-----|----------|----------|----------|------|-----|
| | | | | | | | |



(8) 0.50 PVC CONDUIT CONTINUOUS
 RUN FROM LOAD CELL TO TOTALIZER
 SEE SECTION "C" SHEET 2

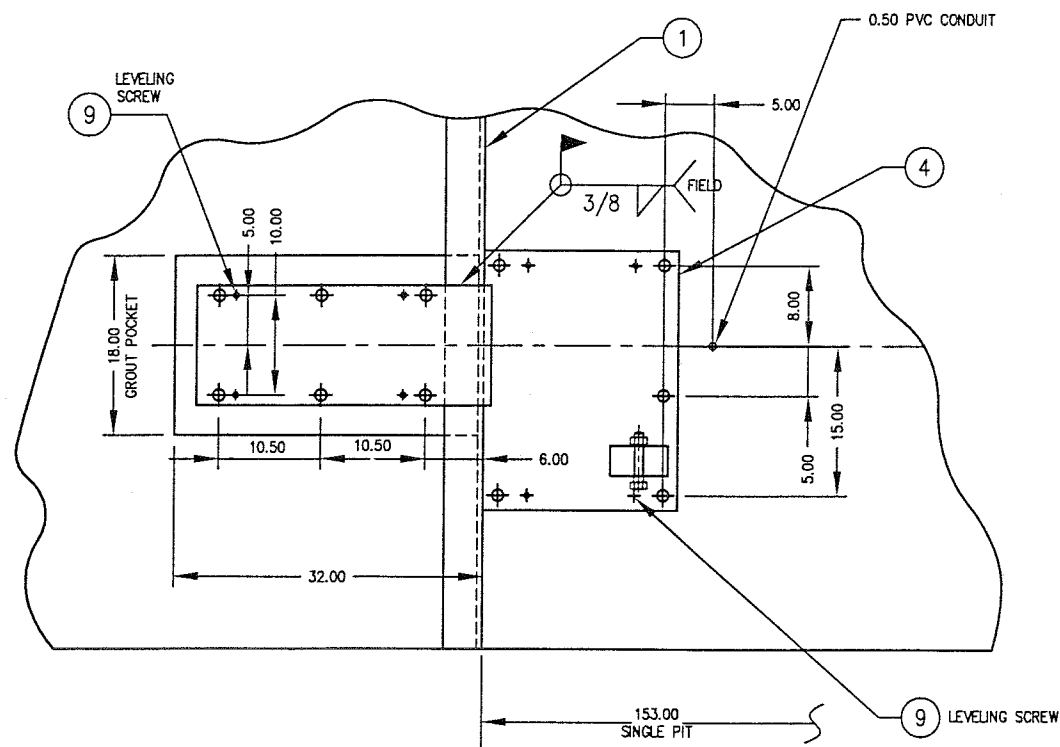


FOR REFERENCE ONLY
DO NOT USE FOR CONSTRUCTION

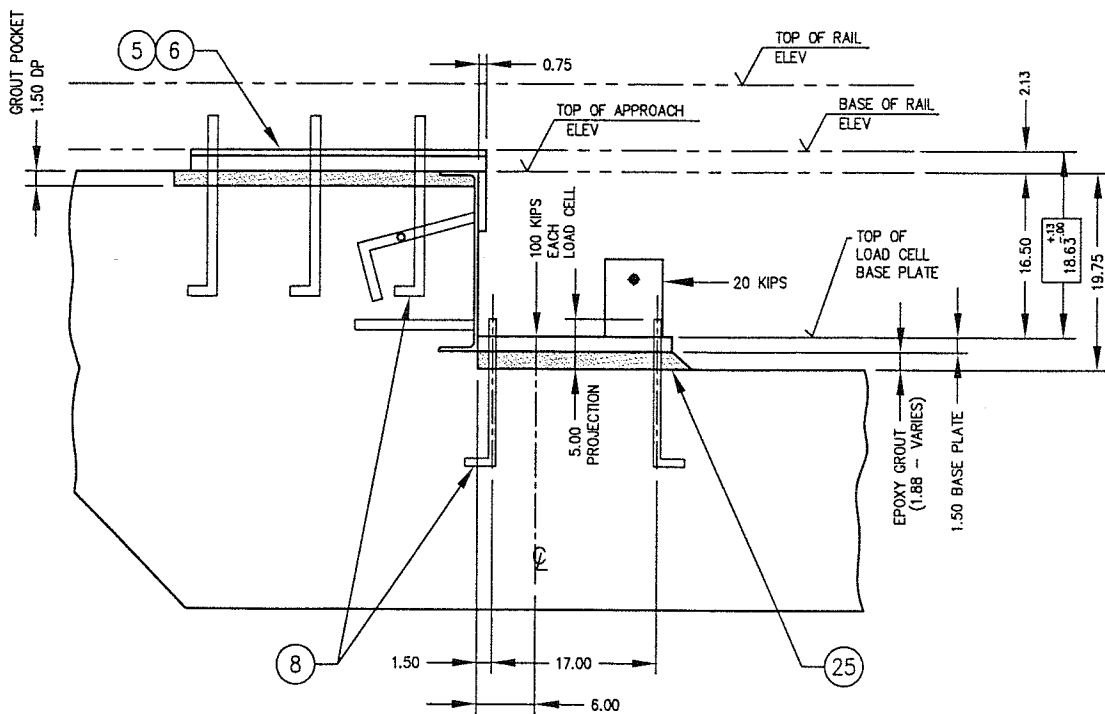
EMERY WINSLOW SCALE CO.

CUSTOMER: ALBANY SCALE, ALBANY, GA
 FOR QUOTE ONLY
 A.R.E.A. RAIL 132 lb - TBD

| | | | |
|--|---------------|---|--|
| ALL SHARP CORNERS AND EDGES TO BE BROKEN | | EMERY WINSLOW SCALE COMPANY SEYMOUR, CT U.S.A. TERRE HAUTE, IN. | |
| DIMENSIONS ARE IN INCHES. TOLERANCES UNLESS SPECIFIED OTHERWISE: | | SINGLE RAILROAD TRACK SCALE 62-85-12.5 ABOVE GROUND FOUNDATION PLAN | |
| MACHINING XX = ± .01 XXX = ± .005 | | FABRICATION ± .13 | |
| REV | DESCRIPTION | DATE | BY |
| | | | |
| THIS DRAWING IS THE PROPERTY OF EMERY WINSLOW SCALE COMPANY SEYMOUR, CONNECTICUT. THE INFORMATION CONTAINED HEREIN IS CONFIDENTIAL AND IS NOT TO BE USED OR DISSEMINATED TO OTHERS WITHOUT THE EXPRESS WRITTEN CONSENT OF EMERY WINSLOW SCALE COMPANY. | | DRAWN: CBM DATE: 3/14/02 | CHECKED: DATE: ACAD FILENAME: ACC0898 LAYERS USED: 1,2 |
| SCALE | FIRST USED ON | DRAWING NO. | REV |
| 1:40 | | D-35546 SH1 OF 2 | |

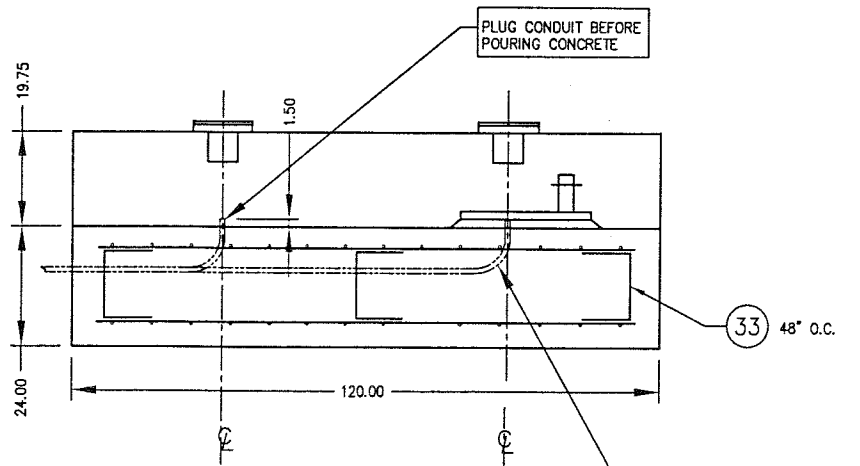


VIEW X
SCALE 1:10

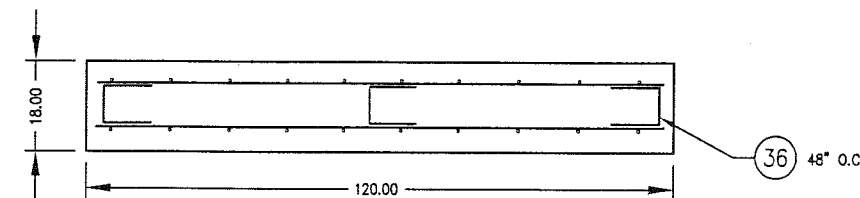


**FOR REFERENCE ONLY
DO NOT USE FOR CONSTRUCTION**

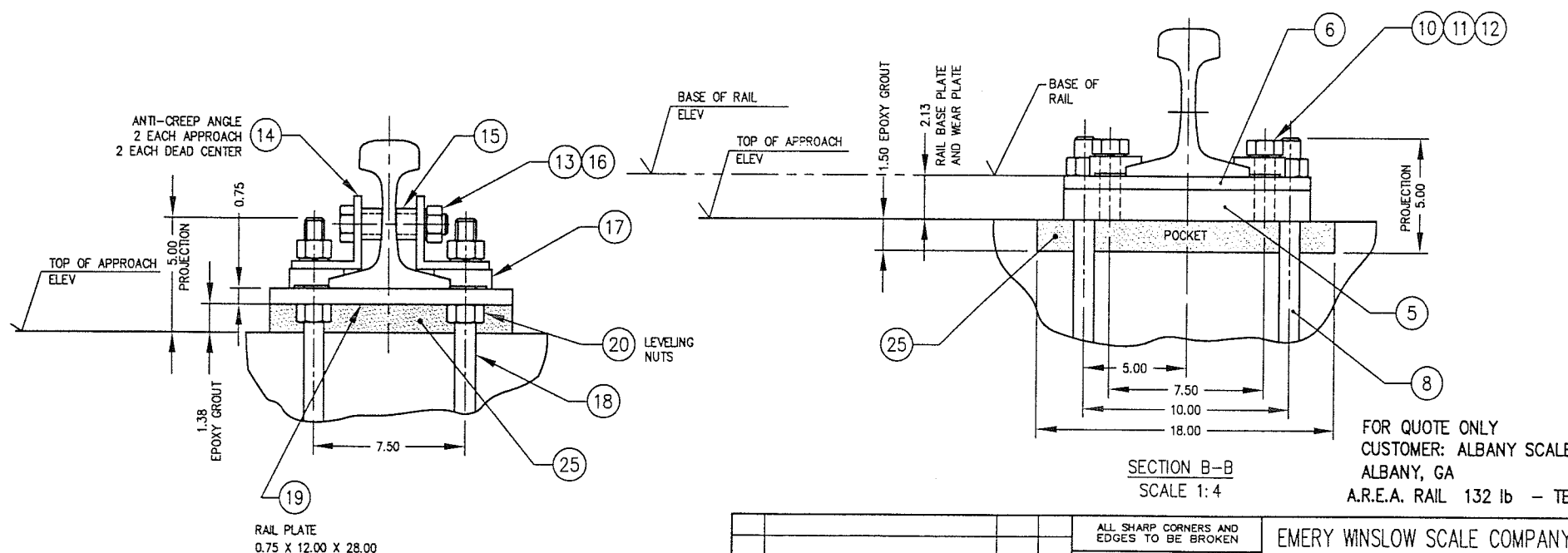
EMERY WINSLOW SCALE CO.



SECTION C-C
SCALE 1:20



APPROACH SECTION D-D
SCALE 1:20



SECTION B-B
SCALE 1:4

FOR QUOTE ONLY
CUSTOMER: ALBANY SCALE,
ALBANY, GA
A.R.E.A. RAIL 132 lb - TBD

| ITEM NO. | DESCRIPTION | QTY | MATERIAL | UNIT WT. | PART NO. | SIZE | WT. |
|----------|-------------------------------------|-----|--------------|----------|------------------------------------|--|-----------|
| 1 | END COPING | 2 | CS | | B-35078 | | |
| 2 | | | | | | | |
| 3 | | | | | | | |
| 4 | LOAD CELL BASE PLATE | 2/2 | CS | | B-35229-1,-2 | 1.50 X 20.00 X 28.00 | |
| 5 | RAIL BASE PLATE 131, 132, 133 lb | 4 | CS | | B-35075 | 1.50 X 12.00 X 30.00 | |
| 6 | WEAR PLATE 131, 132, 133 lb | 4 | CS | | B-35076 | 0.63 X 12.00 X 30.00 | |
| 7 | | | | | | | |
| 8 | L-ANCHOR BOLT (W/NUT) | 44 | CS/ZN | | | 1.00-8UNC X 18.00 5.00 THREAD | |
| 9 | IHCS | 32 | CS | | | 0.500-13 UNC X 4.00 FULL THREAD (LEVELING) | |
| 10 | RAIL CLIP | 24 | CS | | No 62 | TROMAR | |
| 11 | IHCS | 24 | CS/ZINC | | | 1.000-8 UNC X 2.50 TYPE A-325 | |
| 12 | LOCKWASHER | 24 | CS/ZINC | | | 1.000 | |
| 13 | HEX HEAD NUT | 8 | CS/ZINC | | | 1.000-8 UNC | |
| 14 | ANTI-CREEP 131, 132, 133 lb | 8 | CS | | B-35081 | L 0.38 X 3.50 X 3.50 X 28.00 | |
| 15 | RAIL SPACER | 16 | CS | | A-35068 | 1.50 OD TUBING X 0.234 WALL | |
| 16 | IHCS | 8 | CS/ZINC | | | 1.00-8 UNC X 5.00 GRADE 8 | |
| 17 | RAIL CLIP | 96 | CS | | No 62 | TROMAR | |
| 18 | L-ANCHOR BOLT (W/NUT) | 96 | CS | | | 1.00-8UNC X 18.00 5.00 THREAD | |
| 19 | APPROACH RAIL BASE 131, 132, 133 lb | 24 | CS | | B-35074 | 0.75 X 12.00 X 28.00 | |
| 20 | LEVELING NUT | 96 | NYLON | | | 1.000-8 UNC 94812A640 McM-CAAR | |
| 21 | | | | | | | |
| 22 | | | | | | | |
| 23 | | | | | | | |
| 24 | | | | | | | |
| 25 | FIVE STAR GROUT (EPOXY) | | (NON-SHRINK) | | FIVE STAR PRODUCTS, FAIRFIELD, CT. | | BY OTHERS |
| 26 | REBAR, TRANSVERSE | | | | #6 - 114.00 | | BY OTHERS |
| 27 | | | | | | | |
| 28 | REBAR, LONGITUDINAL | | | | #6 - | AS PER DETAILER | BY OTHERS |
| 29 | REBAR, LONGITUDINAL | | | | #5 - | AS PER DETAILER | BY OTHERS |
| 30 | REBAR, VERTICAL WALL | | | | #5 - 48.00 | | BY OTHERS |
| 31 | REBAR, TRANSVERSE WALL | | | | #6 - 106.00 | | BY OTHERS |
| 32 | REBAR, LONGITUDINAL WALL | | | | #6 - 211.00 | | BY OTHERS |
| 33 | REBAR, FORMED | | | | #6 | 18 12 12 | BY OTHERS |
| 34 | REBAR, TRANSVERSE | | | | #5 - 114.00 | | BY OTHERS |
| 35 | REBAR, FORMED | | | | #6 | 60 38 24 | BY OTHERS |
| 36 | REBAR, FORMED | | | | #6 | 12 12 12 | BY OTHERS |
| 37 | REBAR, FORMED | | | | #6 | 24 24 | BY OTHERS |

GENERAL NOTES:

- ALL CONSTRUCTION AND FOUNDATION MATERIALS MUST BE IN ACCORDANCE WITH A.A.R. SCALE HANDBOOK 1997 EDITION.
- THE FOUNDATION DESIGN IS BASED ON A SOIL BEARING CAPACITY OF AT LEAST 4,000 LB PER SQ FT.
- A SOIL ANALYSIS OF THE INSTALLATION MUST BE COMPLETED SO AS TO DETERMINE THE ACTUAL SOIL BEARING CAPACITY. IF SOIL DOES NOT HAVE BEARING CAPACITY OF AT LEAST 4,000 LB PER SQ FT, AND ITS BEARING CAPACITY CANNOT BE INCREASED BY DRAINAGE, STABILIZATION, OR OTHER MEANS, PILE FOUNDATION SHALL BE PROVIDED.
- CONCRETE SPECIFICATION:
COMPRESSIVE STRENGTH OF 4,000 PSI AT 28 DAYS. MAXIMUM SIZE AGGREGATE TO BE 3/4 STONE.
AIR ENTRAINED AND PLACED IN ACCORDANCE WITH ACI STD. 318-89.
- REBAR:
5.1 MINIMUM BAR OVERLAP OF 36 INCHES
5.2 EMBEDMENT: 3 INCHES AGAINST EARTH
5.3 DEFORMED BILLET STEEL CONFORMING TO ASTM SPECIFICATION A-615, GRADE 60.
- GROUT:
6.1 ALL BASE PLATES PLACED ON NON-SHRINK EPOXY GROUT.

| | | | | | |
|--|-------------|------|----|--|--|
| ALL SHARP CORNERS AND EDGES TO BE BROKEN | | | | EMERY WINSLOW SCALE COMPANY SEYMOUR, CT U.S.A TERRE HAUTE, IN. | |
| DIMENSIONS ARE IN INCHES. TOLERANCES UNLESS SPECIFIED OTHERWISE: MACHINING: .005 ± .01 FABRICATION: .005 ± .13 | | | | SINGLE RAILROAD TRACK SCALE MODEL 62-85-12.5 ABOVE GROUND FOUNDATION SECTION | |
| REV | DESCRIPTION | DATE | BY | DRAWN: CBM DATE: 3/14/02 | SCALE AS NOTED PLOT 1:40 |
| THIS DRAWING IS THE PROPERTY OF EMERY WINSLOW SCALE COMPANY SEYMOUR, CONNECTICUT. THE INFORMATION CONTAINED HEREIN IS CONFIDENTIAL AND IS NOT TO BE USED OR DISSEMINATED TO OTHERS WITHOUT THE EXPRESS WRITTEN CONSENT OF EMERY WINSLOW SCALE COMPANY. | | | | CHECKED: DATE: AC00898 LAYERS USED: 2,3 | FIRST USED ON DRAWING NO. D-35546 SHEET 2 OF 2 |