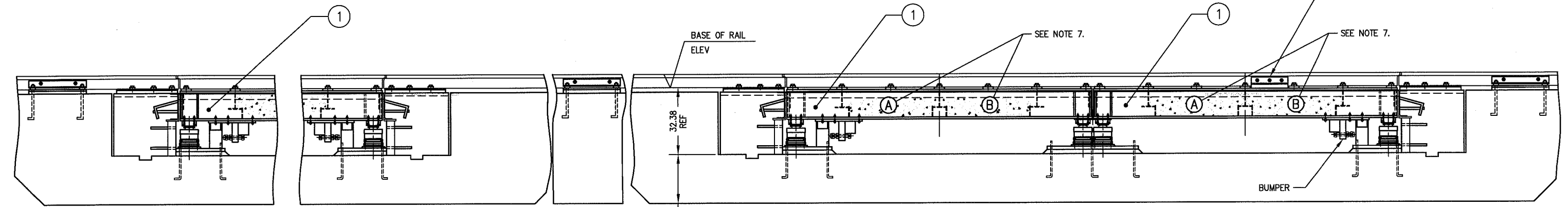
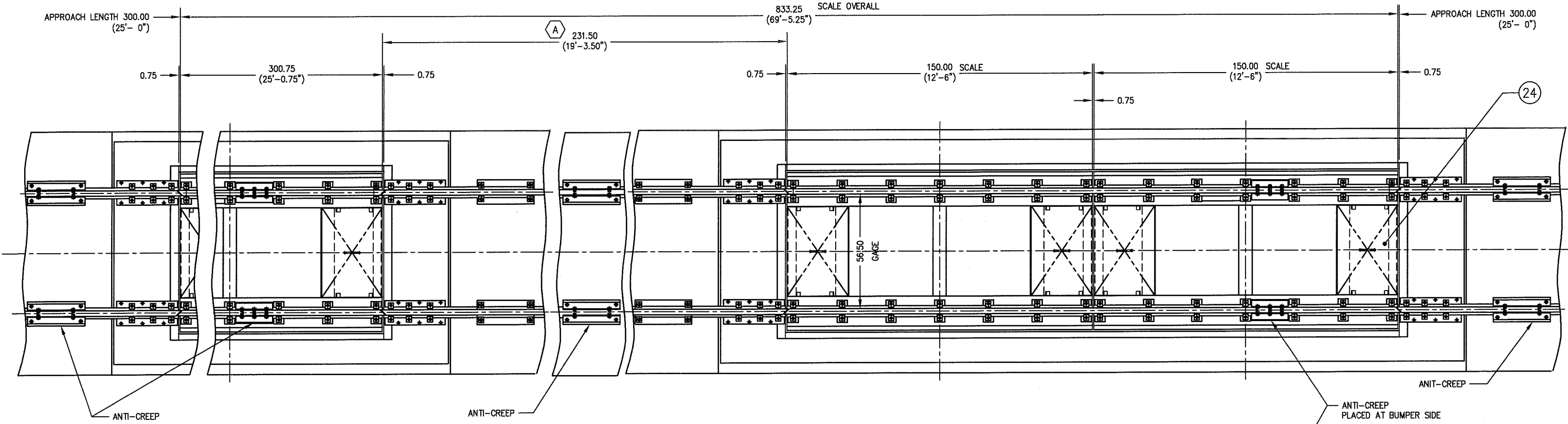
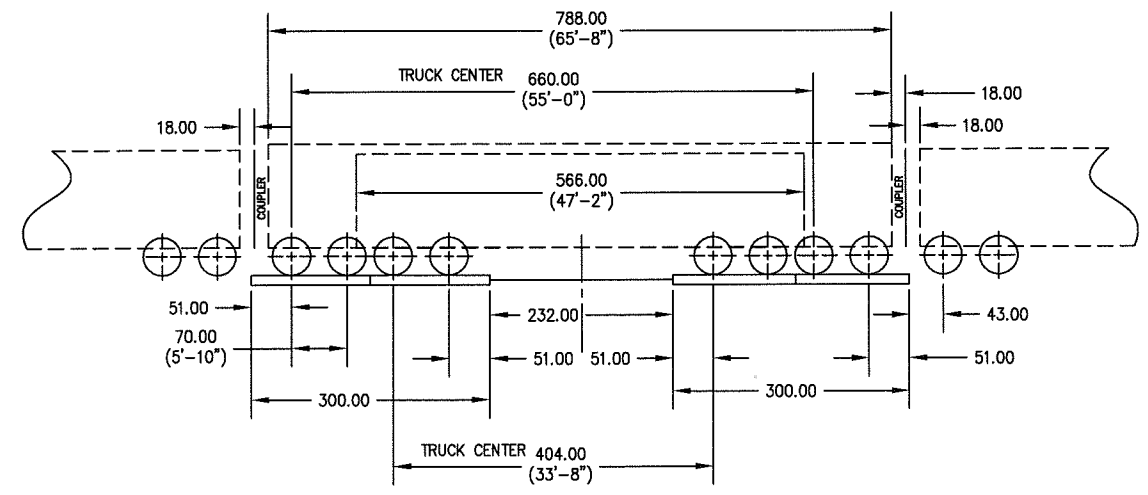


ITEM NO	DESCRIPTION	QTY	MATERIAL	UNIT WT	PART NO	SIZE	WT
---------	-------------	-----	----------	---------	---------	------	----

BILL OF MATERIAL AND DETAILS - SEE SHEET 2



CUSTOMER: BP SOLVAY
 DEER PARK, TEXAS
 SERVICING RAILROAD: UNION PACIFIC RR



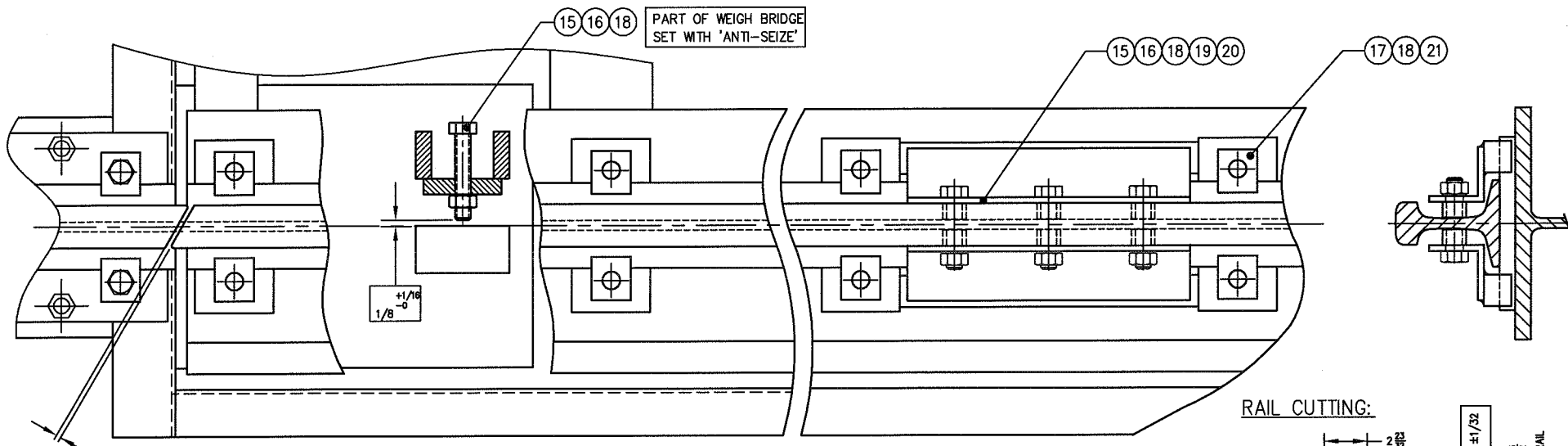
LONG CAR COUPLED WEIGHING
 SHORT CAR UNCOUPLED WEIGHING

- NOTES:
- RTS DESIGN AS PER A.A.R. LATEST REVISION
 - WEIGH BRIDGE DESIGN FOR COOPER E80 LOADING
 - SECTIONAL CAPACITY 85 TON
 - SCALE CAPACITY 170 TON
 - RTS NTEP C.O.C. No. 97-122
 - HYDROSTATIC LOAD CELL 136-100RR (100,000 LB CAPACITY) NTEP C.O.C. No. 88-239-PA1
 - WEIGH RAIL A.R.E.A. 115 LB. (BY OTHERS)
 - FILL BAYS 'A' AND 'B' WITH ANY GRADE OF CONCRETE TO TOP OF TRANSVERSE BEAMS, BEFORE OR AFTER ASSEMBLY. (USED FOR BALLAST ONLY - 1.0 CU YD PER PLATFORM)

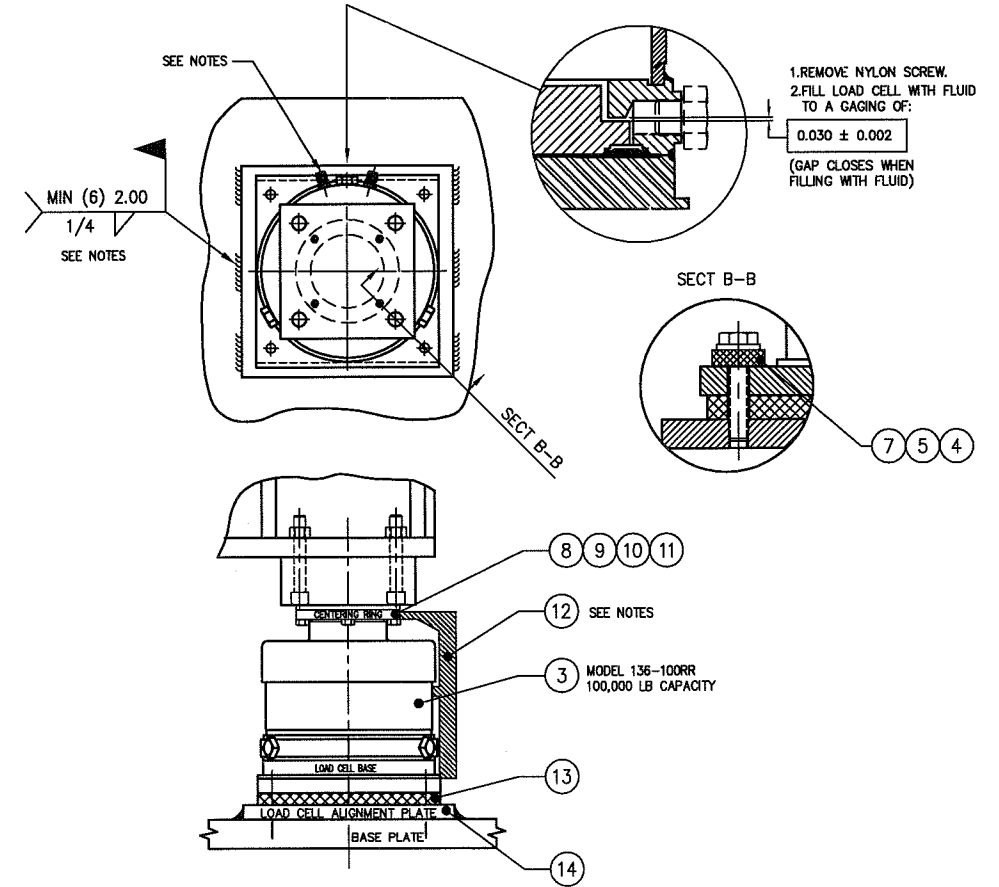
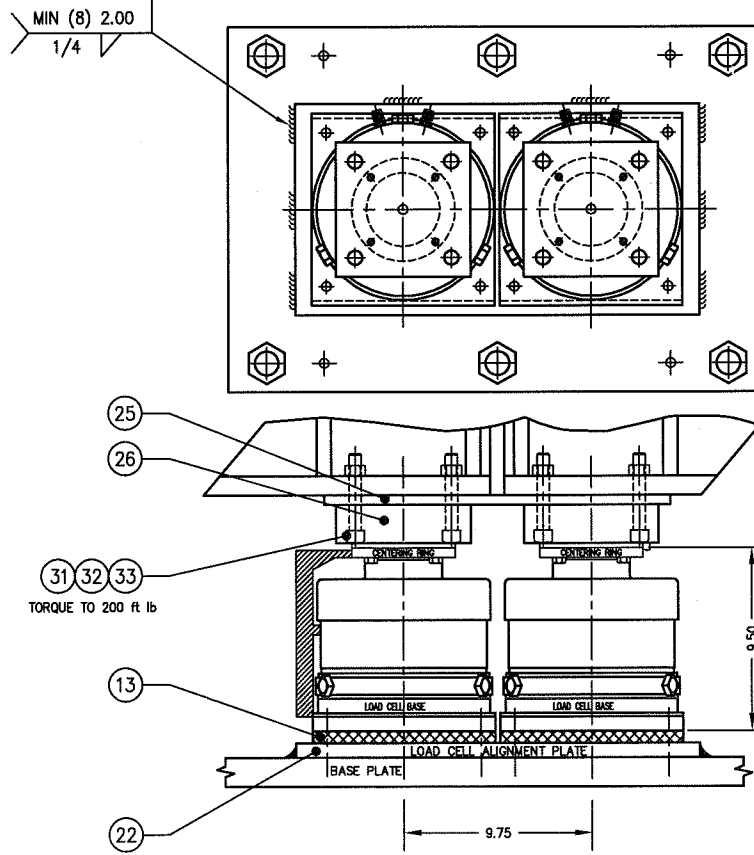
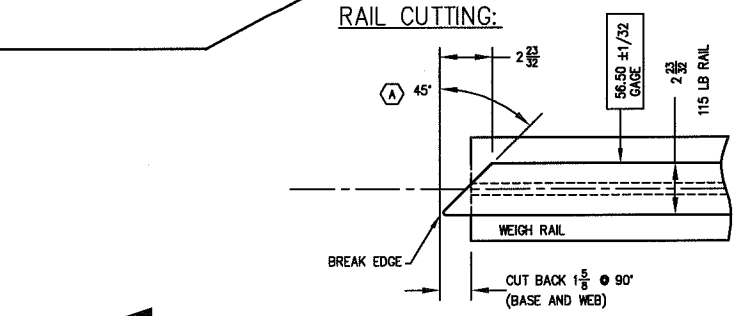
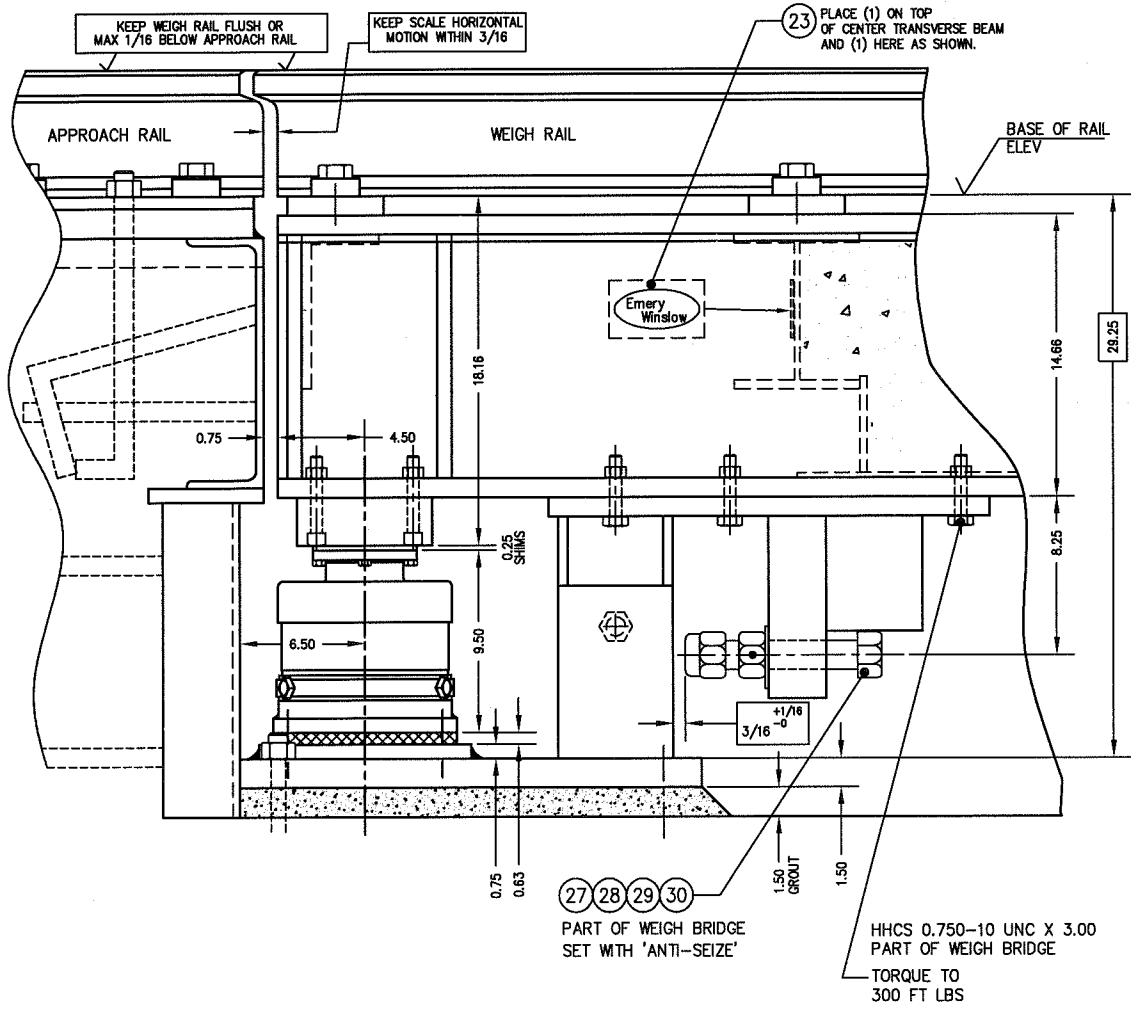
REF DWGS:

D-35605 SHT 2/2	ASSEMBLY DETAIL AND MATERIAL LIST
D-35606 SHT 1/2	FOUNDATION
D-35606 SHT 2/2	FOUNDATION SECTION
B-35185	TUBING DIAGRAM

ALL SHARP CORNERS AND EDGES TO BE BROKEN		EMERY WINSLOW SCALE COMPANY SEYMOUR, CT U.S.A. TERRE HAUTE, IN.	
DIMENSIONS ARE IN INCHES. TOLERANCES UNLESS SPECIFIED OTHERWISE:		MULTI-MODULE RAILROAD TRACK SCALE MODEL 68-170-25/25 SHALLOW PIT ASSEMBLY	
A	231.50 WAS 231.75	8/15/02	CBM
REV	DESCRIPTION	DATE	BY
THIS DRAWING IS THE PROPERTY OF EMERY WINSLOW SCALE COMPANY SEYMOUR, CONNECTICUT. THE INFORMATION CONTAINED HEREIN IS CONFIDENTIAL AND IS NOT TO BE USED OR DISSEMINATED TO OTHERS WITHOUT THE EXPRESS WRITTEN CONSENT OF EMERY WINSLOW SCALE COMPANY.		DRAWN: CBM DATE: 7/22/02	SCALE: 1:25
		CHECKED: D.O.ZOG DATE: 8/15/02	FIRST USED ON: J-1792B
		ACAD FILENAME: ACC0925	DRAWING NO.: D-35605
		LAYERS USED: ALL	1 OF 2



ITEM NO	DESCRIPTION	QTY	MATERIAL	UNIT WT	PART NO	SIZE	WT
1	WEIGH BRIDGE 12.5' (25')	4	ASTM A36		D-35607	115 lb RAIL	
2							
3	LOAD CELL	16	SS 304		D-35226	136-100RR	
4	HHCS	64	SS 304		0.500-13UNC X 2.25		
5	WASHER MS 15795	64	SS 304		0.531 ID X 1.06 OD		
6							
7	WASHER	64	NEOPRENE		A-19911		
8	SHIM	48	SS 304		A-29869-1	0.06 THICK	
9	SHIM	48	SS 304		A-29869-2	0.03 THICK	
10	CENTERING RING	16	CS/ZN		B-29871		
11	HEX HD SCREW	64	SS 304		0.375-16 UNC X 1.25		
12	ALIGNMENT GAGE	1	ALUM		B-30305		
13	SHOCK PAD	16	NEOPRENE		A-35223	SQUARE	
14	LOAD CELL ALIGN PLATE	8	CS		B-35224	END	
15	HHCS	20	CS/ZN		1.00-8 UNC X 5.00	FULL THREAD, GRD 8	
16	HEX HD NUT	20	CS/ZN		1.00-8 UNC		
17	HHCS	112	CS/ZN		1.00-8 UNC X 2.00	TYPE A-325	
18	LOCK WASHER	132	CS/ZN		1.00		
19	RAIL ANTI-CREEP (SCALE)	8	CS		B-35617	115 lb	
20	RAIL SPACER	48	CS		A-35068		
21	RAIL CLIPS	112	CS		No. 62	ROMAR	
22	LOAD CELL ALIGNMENT PLATE	4	ASTM A36		B-35222	CENTER	
23	SCALE NAME TAG	4	SS		B-34821		
24	REMOVABLE COVER	8	CS		B-35113	0.25 4-WAY SAFETY PLATE	
25	TIE PLATE	REF	M1018		B-35150		
26	LOAD PLATE	REF	ASTM A36		A-35151		
27	HHCS	REF	CS/ZN		1.500-6 UNC X 8.00	FULL THREAD, GRD 8	
28	LOCK NUT ASSEMBLY	REF	CS/ZN		A-32576	1.500-6 UNC 2H	
29	BUMPER HEAD	REF	CS/ZN		A-32713-Y		
30	WASHER	REF	SS 304		1.500		
31	SHCS	REF	CS/ZN		0.625-11 UNC X 4.00	GRD 8	
32	HEX HD NUT	REF	CS/ZN		0.625-11 UNC	2H	
32	LOCKWASHER	REF	CS/ZN		0.625		



AMERICAN RAILROAD REQUIREMENTS

1. THE APPROACH RAILS SHALL BE IN THE SAME PLANE AND ALIGNMENT AS THE WEIGH RAILS WITHIN 1/32 AND SHALL BE PROPERLY ANCHORED TO PREVENT CREEPAGE OF APPROACH RAILS IN ORDER TO MAINTAIN THE GAP BETWEEN THE WEIGH RAIL AND THE APPROACH RAIL HEAD.
2. EXPANSION RAILS ARE REQUIRED AT BOTH APPROACHES TO MINIMIZE THE EFFECT OF THERMAL EXPANSION.
3. THE GAP BETWEEN THE WEIGH RAIL HEADS AND THE APPROACH RAIL HEADS SHOULD NOT BE LESS THAN 1/4 INCH NOR GREATER THAN 3/8 INCH.
4. TRAIN SPEED MUST NOT EXCEED 8 MPH.
5. KEEP SCALE LONGITUDINAL MOTION WITHIN 3/16 AND TRANSVERSE MOTION WITHIN 1/8.
6. WEIGH RAIL SHOULD BE NEW AND CONTINUOUS OVER ENTIRE SCALE LENGTH.

INSTALLATION NOTES:

1. ASSEMBLE LOAD CELL, SHOCK PAD AND ALIGNMENT PLATE.
2. PLACE WHOLE ASSEMBLY ON BASE PLATE. (TUBE FITTINGS SHOULD FACE A POSITION TO FACILITATE TUBING AND PURGING)
3. LOWER STRUCTURE ONTO LOAD CELL.
4. CENTER LOAD CELL BASE WITH RESPECT TO CENTERING RING BY USING ALIGNMENT GAGE AND MOVING WHOLE ASSEMBLY.
5. VERIFY SCALE BRIDGE LOCATION AND DOUBLE CHECK LOAD CELL ALIGNMENT. WELD ALIGNMENT PLATE.
6. TIGHTEN BOLTS.

CUSTOMER: BP SOLVAY
DEER PARK, TEXAS
RAIL A.R.E.A 115 LB

ALL SHARP CORNERS AND EDGES TO BE BROKEN		EMERY WNSLOW SCALE COMPANY SEYMOUR, CT U.S.A TERRE HAUTE, IN.	
DIMENSIONS ARE IN INCHES. TOLERANCES UNLESS SPECIFIED OTHERWISE:		MULTI-MODULE RAILROAD TRACK SCALE MODEL 68-170-25/25 ASSEMBLY DETAILS - SHALLOW PIT	
XX = ± .010	XXX = ± .005	SCALE	FIRST USED ON
REV	DESCRIPTION	DATE	DRAWING NO.
A	RAIL CUT WAS 60'	8/15/02	D-35605
THIS DRAWING IS THE PROPERTY EMERY WNSLOW SCALE COMPANY SEYMOUR, CONNECTICUT. THE INFORMATION CONTAINED HEREIN IS CONFIDENTIAL AND IS NOT TO BE USED OR DISSEMINATED TO OTHERS WITHOUT THE EXPRESS WRITTEN CONSENT OF EMERY WNSLOW SCALE COMPANY.		DATE: 7/22/02	REV
DRAWN: CBM		DATE: 8/15/02	2 OF 2
CHECKED: D. Q. ZOG		ACAD FILENAME: ACO0926	A
LAYERS USED: 2,3			