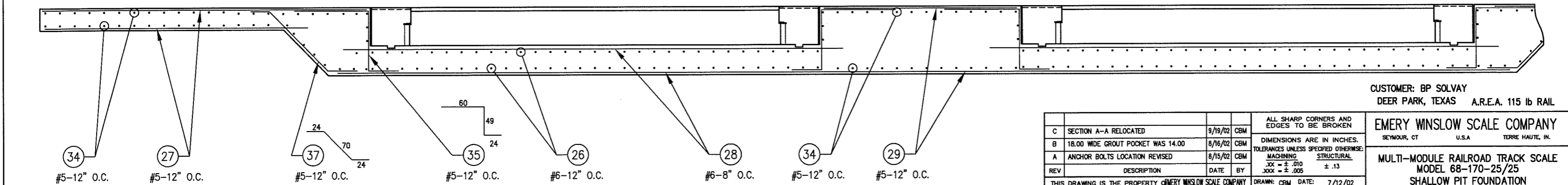
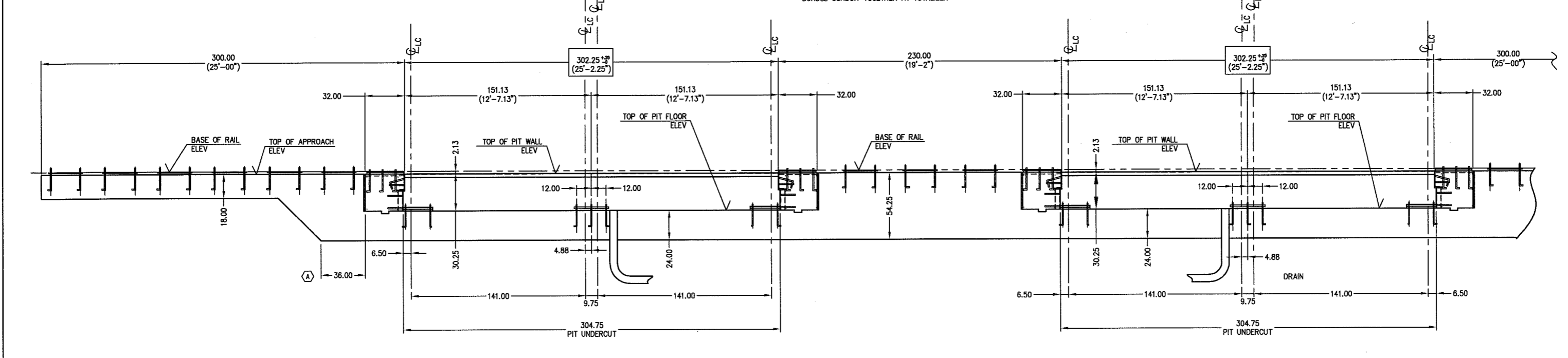
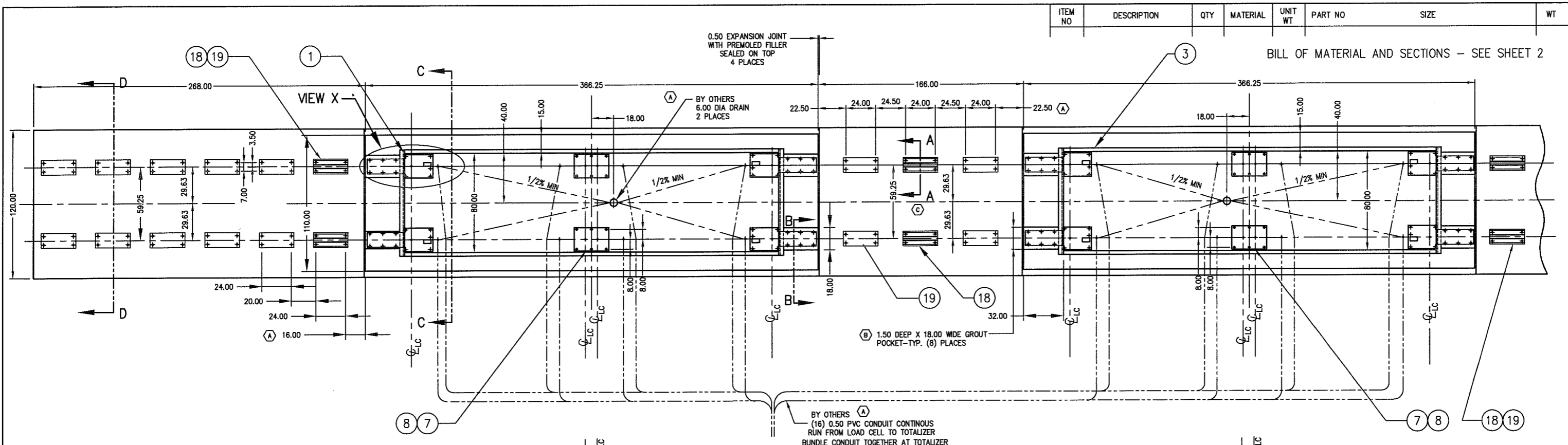


ITEM NO	DESCRIPTION	QTY	MATERIAL	UNIT WT	PART NO	SIZE	WT
---------	-------------	-----	----------	---------	---------	------	----

BILL OF MATERIAL AND SECTIONS - SEE SHEET 2



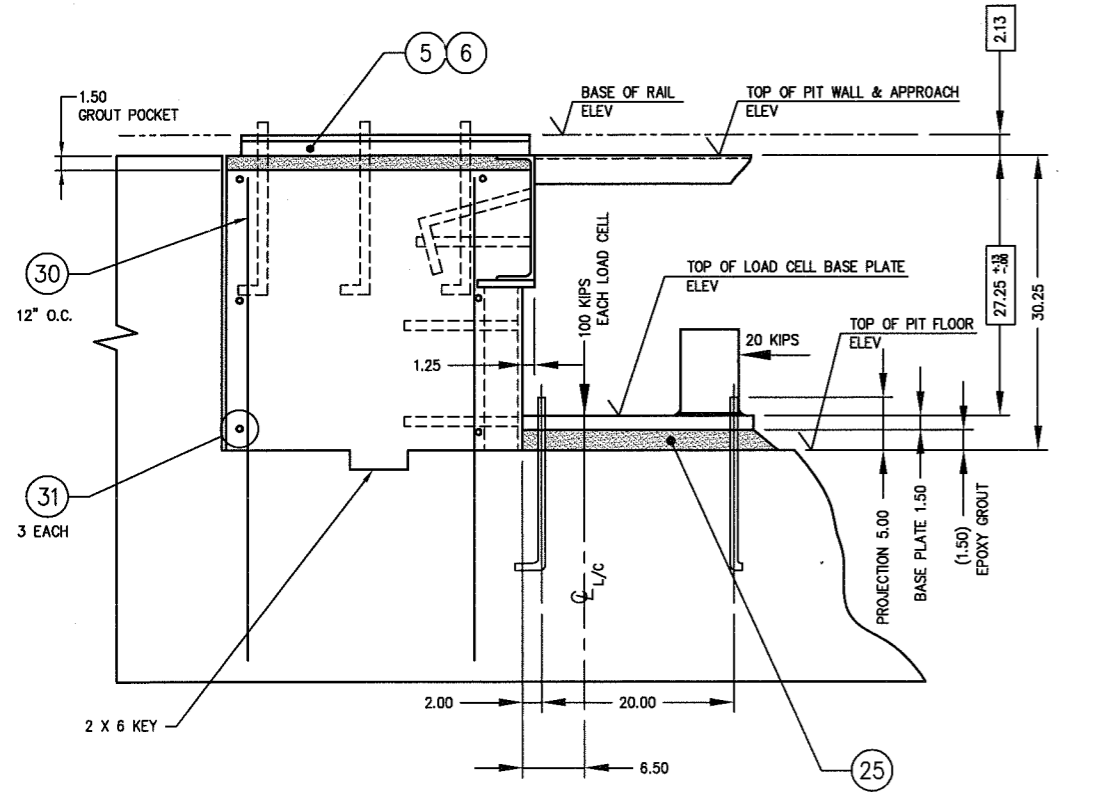
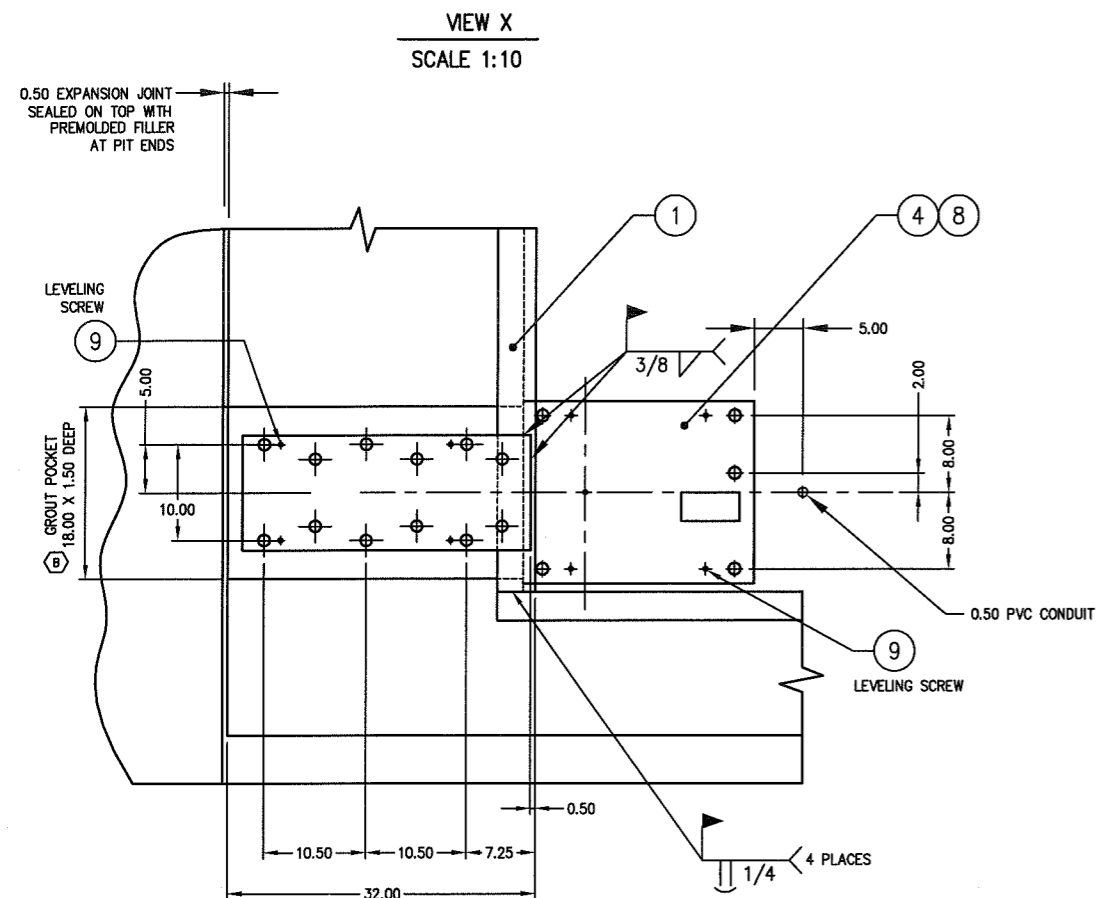
CUSTOMER: BP SOLVAY
DEER PARK, TEXAS A.R.E.A. 115 lb RAIL

EMERY WINSLOW SCALE COMPANY
SEYMOUR, CT U.S.A TERRE HAUTE, IN.

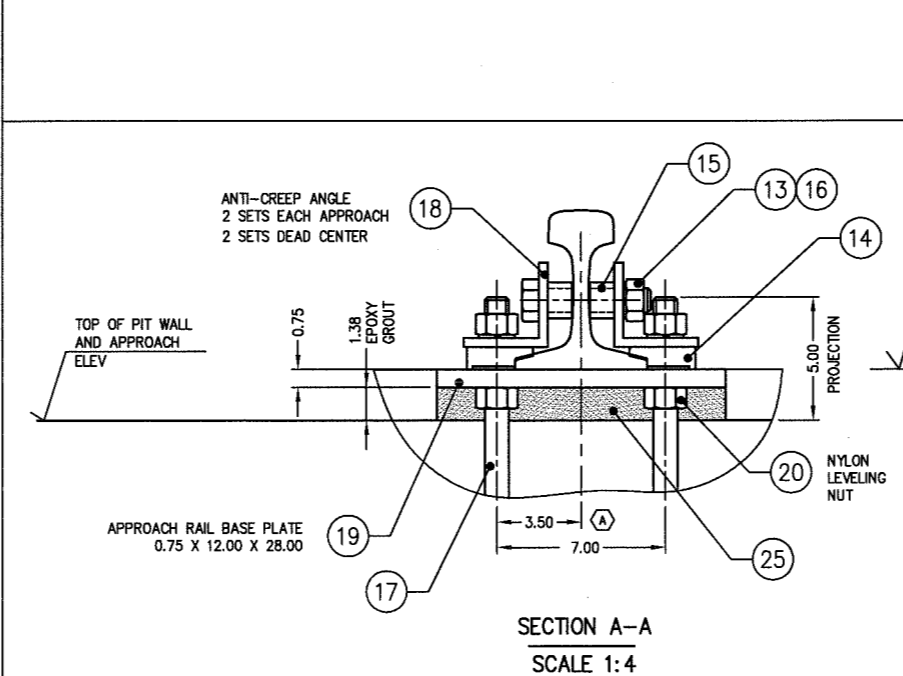
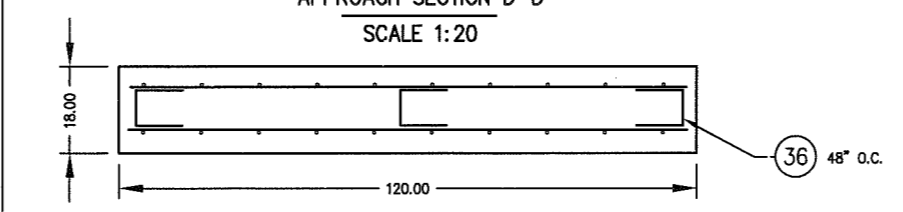
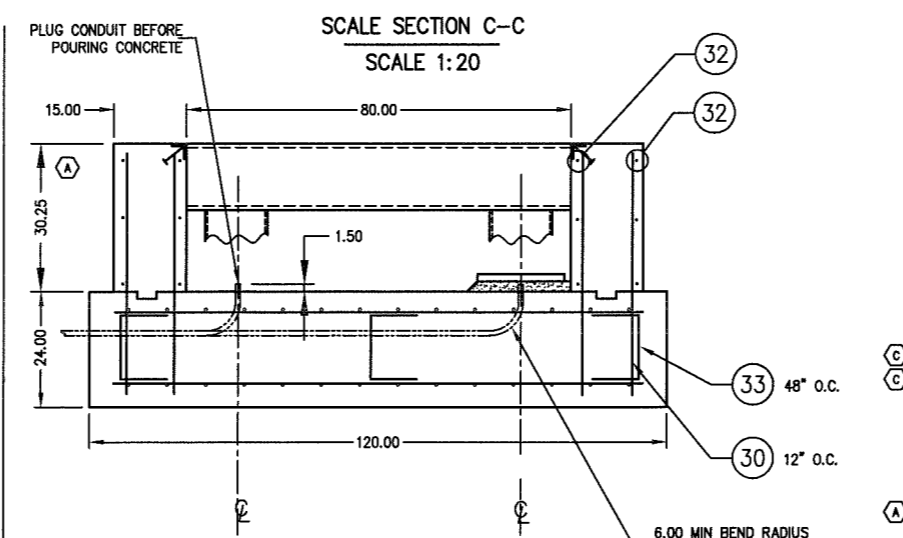
MULTI-MODULE RAILROAD TRACK SCALE
MODEL 68-170-25/25
SHALLOW PIT FOUNDATION

C	SECTION A-A RELOCATED	9/19/02	CBM	ALL SHARP CORNERS AND EDGES TO BE BROKEN
B	18.00 WIDE GROUT POCKET WAS 14.00	8/16/02	CBM	DIMENSIONS ARE IN INCHES. TOLERANCES UNLESS SPECIFIED OTHERWISE: MACHINING ± .010 STRUCTURAL ± .13
A	ANCHOR BOLTS LOCATION REVISED	8/15/02	CBM	
REV	DESCRIPTION	DATE	BY	
THIS DRAWING IS THE PROPERTY OF EMERY WINSLOW SCALE COMPANY SEYMOUR, CONNECTICUT. THE INFORMATION CONTAINED HEREIN IS CONFIDENTIAL AND IS NOT TO BE USED OR DISSEMINATED TO OTHERS WITHOUT THE EXPRESS WRITTEN CONSENT OF EMERY WINSLOW SCALE COMPANY.				DRAWN: CBM DATE: 7/12/02 CHECKED: D.L.ZOOG DATE: 8/15/02 ACAD FILENAME: ACC0927 LAYERS USED: 1,2

SCALE	FIRST USED ON	DRAWING NO.	REV
1:40	J-19504	D-35606	SHEET 1 OF 2 C

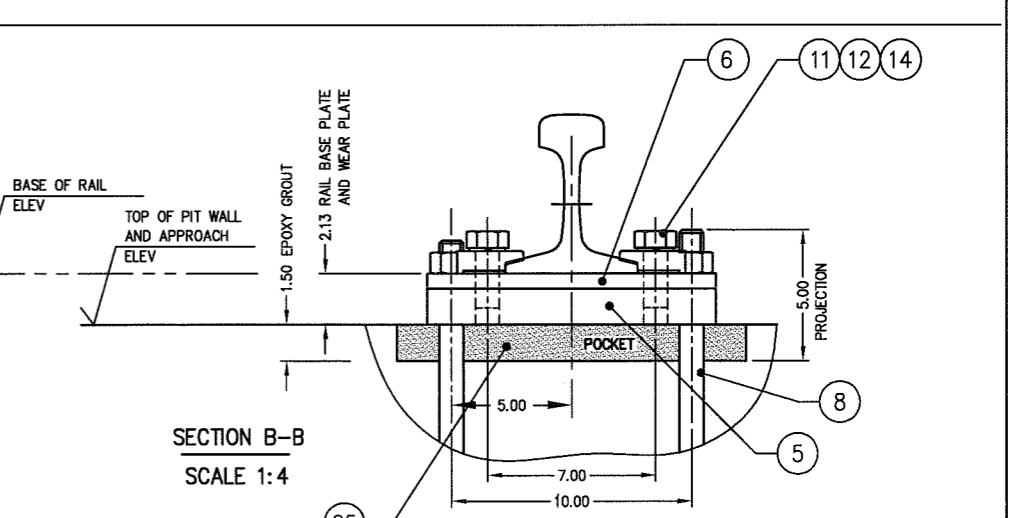


- INSTALLATION NOTES:**
1. SET LOAD CELL BASE PLATE TO PROPER HEIGHT AND LEVEL AS SPECIFIED, USING GREASED LEVELING SCREWS.
 2. LAY GROUT.
 3. FASTEN BASE PLATE DOWN TO PRESET LEVELING SCREWS. DOUBLE CHECK HEIGHT AND LEVEL.
 4. REMOVE LEVELING SCREWS AFTER APPROX 2 - 3 HOURS. TIGHTEN ANCHOR BOLTS WHEN PLACING LOAD CELLS.



ITEM NO	DESCRIPTION	QTY	MATERIAL	UNIT WT	PART NO	SIZE	WT
1	END COPING	4	ASTM A36		B-35098		
2							
3	SIDE COPING, 25 FT	4			A-35100		
4	LOAD CELL BASE PL (END)	4,4	ASTM A36		B-35097-1(LH), -2(RH)	1.50 X 19.00 X 24.00	
5	RAIL BASE PLATE 115 lb	8	ASTM A36		B-35103	1.50 X 12.00 X 30.00	
6	WEAR PLATE 115 lb	8	ASTM A36		B-35102	0.63 X 12.00 X 30.00	
7	LOAD CELL BASE PLATE (CTR)	4	ASTM A36		B-35160		
8	L-ANCHOR BOLT (W/NUT)	112	CS/ZN		1.000-8 UNC X 18.00	5.00 THREAD	
9	LEVELING SCREW, HEX HD	48	CS		0.500-13 UNC X 4.00	FULL THREAD	
10							ROMAR
11	HEX HEAD SCREW	48	CS/ZINC		1.00-8 UNC X 2.50	A-325	
12	LOCKWASHER	48	CS/ZINC		1.00		
13	HEX HEAD NUT	12	CS/ZINC		1.00-8 UNC	2H	
14	RAIL CLIP	48	CS		No 62		ROMAR
15	RAIL SPACER	24	CS		A-35068	1.50 OD TUBING X 0.234 WALL	
16	HEX HEAD SCREW	12	CS/ZINC		1.000-8 UNC X 5.00	GRADE 8	
17	L ANCHOR BOLT W/NUT	120	CS/ZINC		1.000-8 UNC X 18.00	5.00 THREAD	
18	RAIL ANTI-CREEP, APPROACH - 115lb	12	ASTM A36		B-35067	L 0.38 X 3.50 X 3.50 X 27.00	
19	APPROACH RAIL BASE PLATE - 115lb	30	ASTM A36		B-35066	0.75 X 12.00 X 28.00	
20	LEVELING NUT	120	NYLON		1.000-8 UNC	94812A640	McMASTER-CARR
21							
22							
23							
24							
25	HP EPOXY GROUT	A/R	NON-SHRINK		FIVE STAR PRODUCTS, FAIRFIELD, CT.		BY OTHERS
26	REBAR, TRANSVERSE				#6 - 114.00		BY OTHERS
27	REBAR, LONGITUDINAL				#5 -	AS PER DETAILER	BY OTHERS
28	REBAR, LONGITUDINAL				#6 -	AS PER DETAILER	BY OTHERS
29	REBAR, LONGITUDINAL				#5 -	AS PER DETAILER	BY OTHERS
30	REBAR, VERTICAL WALL				#5 - 48.00		BY OTHERS
31	REBAR, TRANSVERSE WALL				#6 - 106.00		BY OTHERS
32	REBAR, LONGITUDINAL WALL				#6 - 360.00		BY OTHERS
33							
34	REBAR, TRANSVERSE				#5 - 114.00		BY OTHERS
35	REBAR, FORMED				#6	60 49 24	BY OTHERS
36	REBAR, FORMED				#6	12 12	BY OTHERS
37	REBAR, FORMED				#6	24 24	BY OTHERS

- GENERAL NOTES:**
1. ALL CONSTRUCTION AND FOUNDATION MATERIALS MUST BE IN ACCORDANCE WITH A.A.R. SCALE HANDBOOK LATEST REVISION.
 2. THE FOUNDATION DESIGN IS BASED ON A SOIL BEARING CAPACITY OF AT LEAST 4,000 LB PER SQ FT.
 3. A SOIL ANALYSIS OF THE INSTALLATION MUST BE COMPLETED TO DETERMINE THE ACTUAL SOIL BEARING CAPACITY. IF SOIL DOES NOT HAVE BEARING CAPACITY OF AT LEAST 4,000 LB PER SQ FT, AND ITS BEARING CAPACITY CANNOT BE INCREASED BY DRAINAGE, STABILIZATION, OR OTHER MEANS, PILE FOUNDATION SHALL BE PROVIDED.
 4. CONCRETE SPECIFICATION:
COMPRESSIVE STRENGTH OF 4,000 PSI AT 28 DAYS. MAXIMUM SIZE AGGREGATE TO BE 3/4 STONE.
AIR ENTRAINED AND PLACED IN ACCORDANCE WITH ACI STD. 318-89.
 5. REBAR:
5.1 MINIMUM BAR OVERLAP OF 48 INCHES
5.2 EMBEDMENT: 3 INCHES AGAINST EARTH
2 INCHES AGAINST EXPOSED SURFACES OR FORMS.
5.3 DEFORMED BILLET STEEL CONFORMING TO ASTM SPECIFICATION A-615, GRADE 60.



CUSTOMER: BP SOLVAY
DEER PARK, TEXAS
A.R.E.A. 115 lb RAIL

REV	DESCRIPTION	DATE	BY
C	ITEM 18, 27.00 WAS 28.00, ITEM 17 5.00 THD ADDED	9/19/02	CBM
B	18.00 WIDE GROUT POCKET WAS 14.00	8/16/02	CBM
A	30.25 WAS 30.13, 3.75 WAS 3.5	8/15/02	CBM

THIS DRAWING IS THE PROPERTY OF EMERY WINSLOW SCALE COMPANY SEYMOUR, CONNECTICUT. THE INFORMATION CONTAINED HEREIN IS CONFIDENTIAL AND IS NOT TO BE USED OR DISSEMINATED TO OTHERS WITHOUT THE EXPRESS WRITTEN CONSENT OF EMERY WINSLOW SCALE COMPANY.

DRAWN: CBM DATE: 7/22/02
CHECKED: D.L. ZOG DATE: 8/15/02
ACAD FILENAME: ACO0927
LAYERS USED: 2,3

ALL SHARP CORNERS AND EDGES TO BE BROKEN
DIMENSIONS ARE IN INCHES.
TOLERANCES UNLESS SPECIFIED OTHERWISE:
MACHINING .XX = ± .010
STRUCTURAL .XXX = ± .005

EMERY WINSLOW SCALE COMPANY
SEYMOUR, CT U.S.A TERRE HAUTE, IN.

MULTI-MODULE RAILROAD TRACK SCALE
MODEL 68-170-25/25
SHALLOW PIT FOUNDATION SECTION

SCALE FIRST USED ON DRAWING NO. J-17928
AS NOTED (PLOT 1:40) D-35606 SH 2 OF 2
REV C