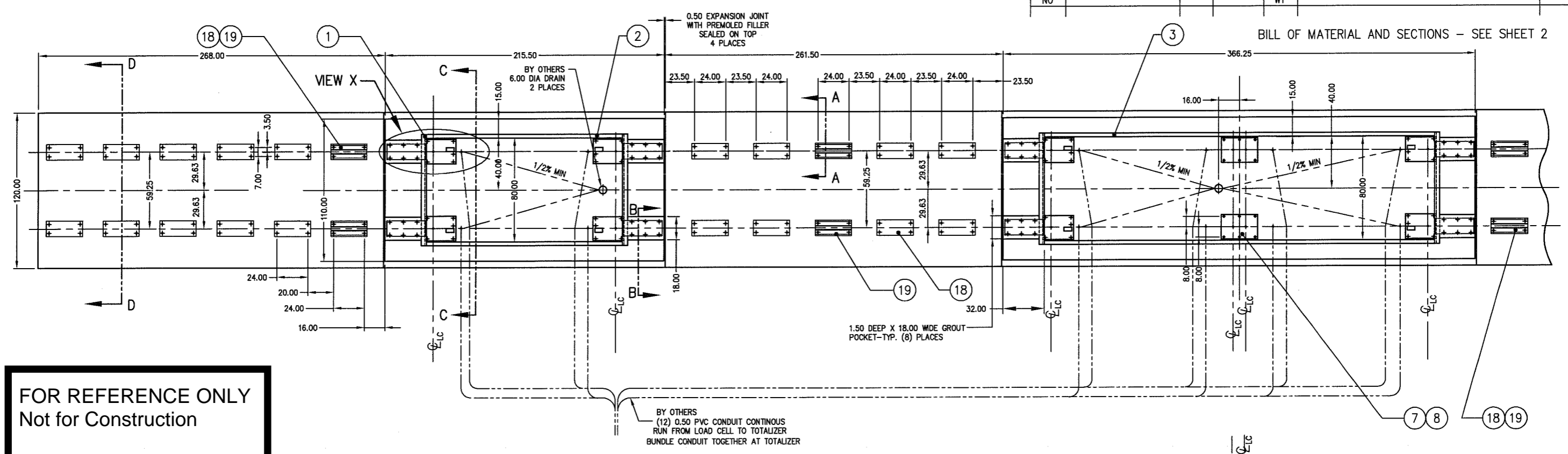
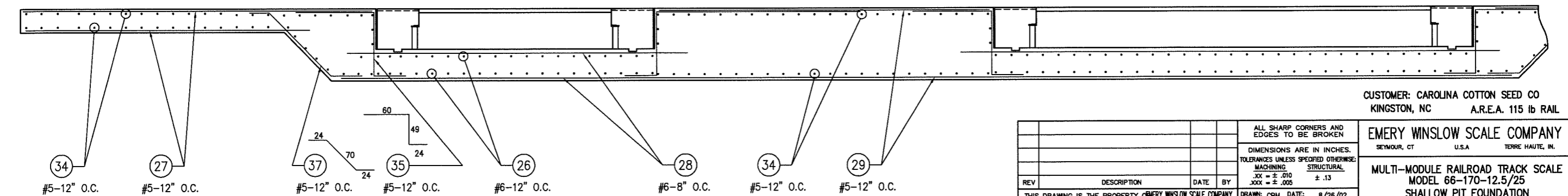
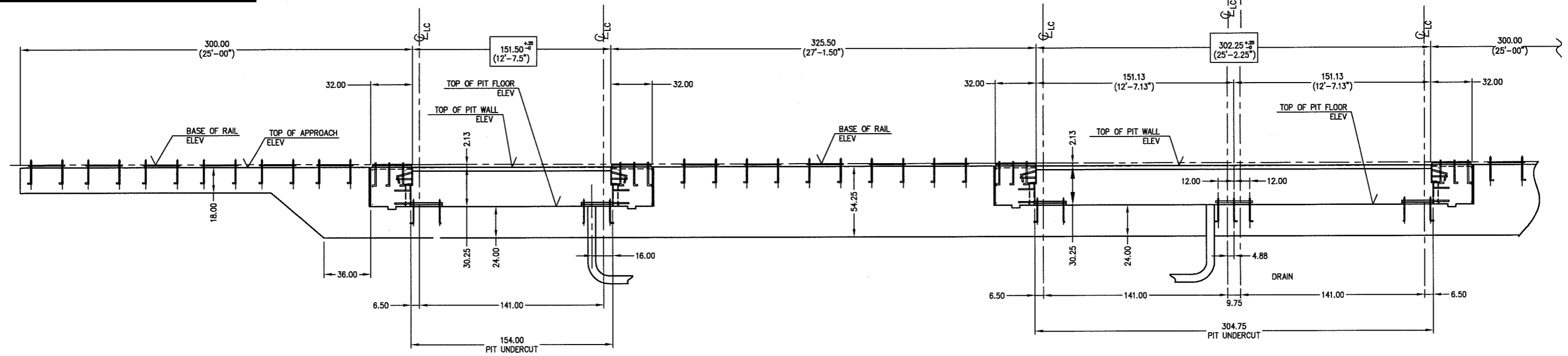


ITEM NO	DESCRIPTION	QTY	MATERIAL	UNIT WT	PART NO	SIZE	WT
---------	-------------	-----	----------	---------	---------	------	----

BILL OF MATERIAL AND SECTIONS - SEE SHEET 2



FOR REFERENCE ONLY
Not for Construction



CUSTOMER: CAROLINA COTTON SEED CO
KINGSTON, NC A.R.E.A. 115 lb RAIL

EMERY WINSLOW SCALE COMPANY
SEYMOUR, CT U.S.A. TERRE HAUTE, IN.

MULTI-MODULE RAILROAD TRACK SCALE
MODEL 66-170-12.5/25
SHALLOW PIT FOUNDATION

REV	DESCRIPTION	DATE	BY

ALL SHARP CORNERS AND EDGES TO BE BROKEN

DIMENSIONS ARE IN INCHES. TOLERANCES UNLESS SPECIFIED OTHERWISE:

MACHINING	STRUCTURAL
.XX = ± .010	± .13
.XXX = ± .005	

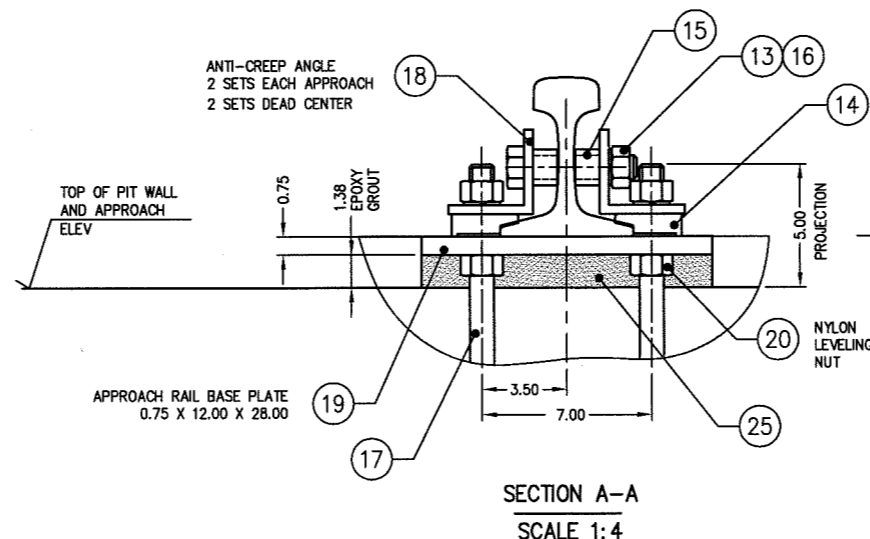
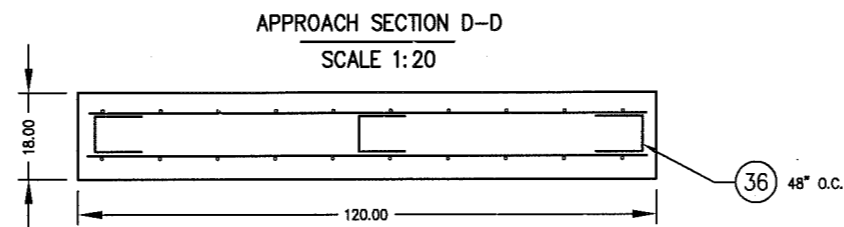
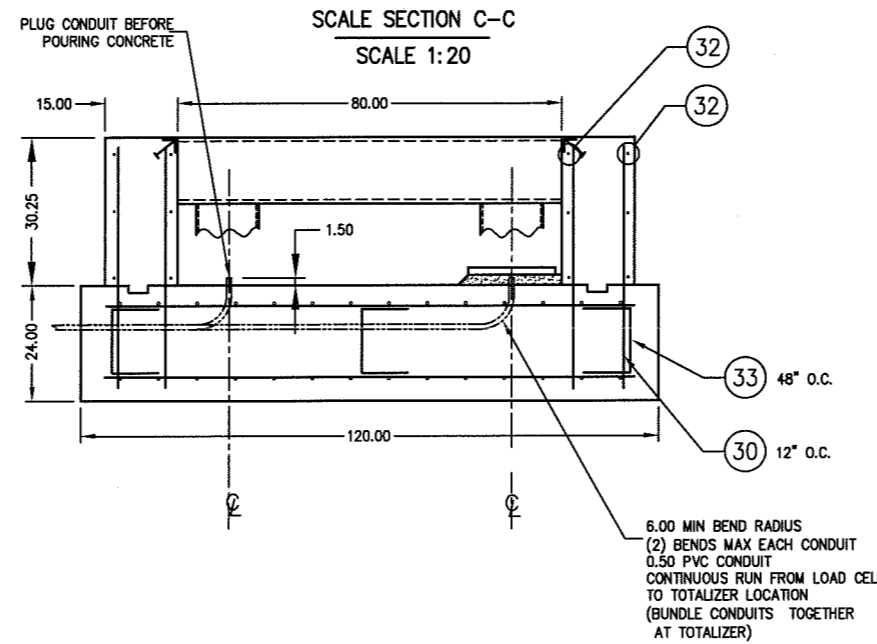
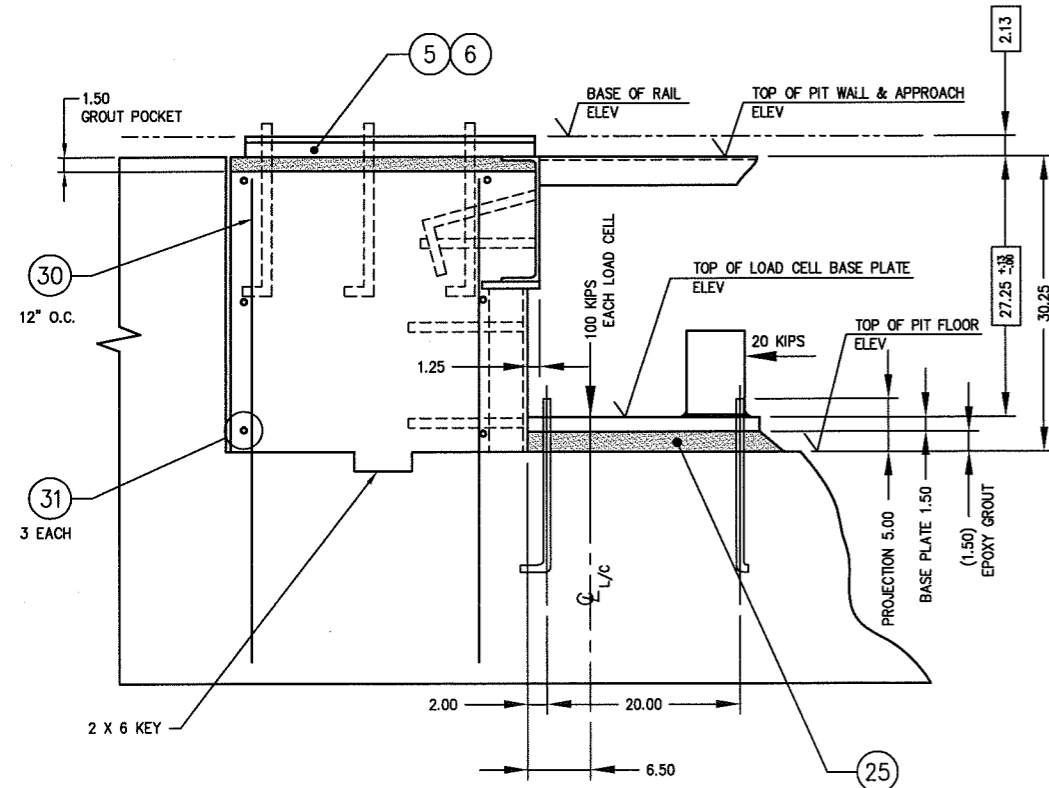
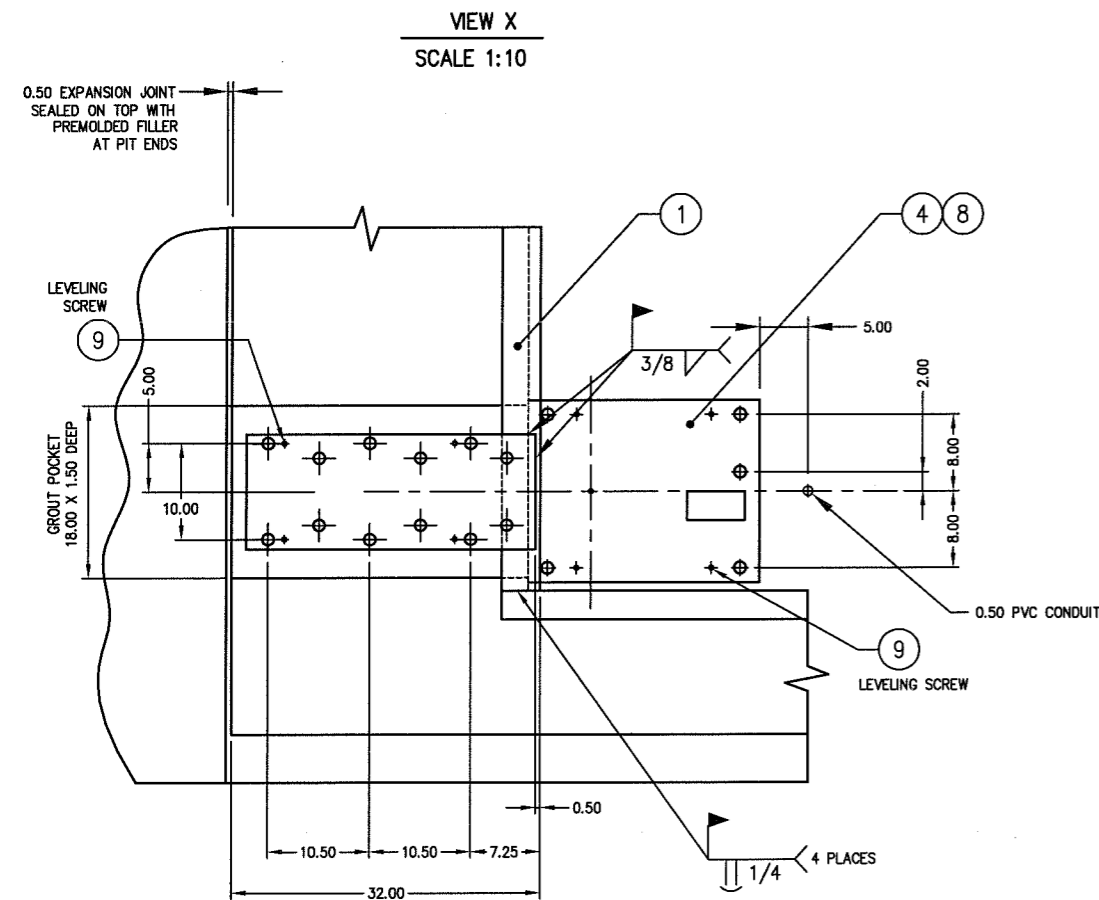
DRAWN: CBM DATE: 8/26/02

CHECKED: D.OLZOG DATE: 9/9/02

ACAD FILENAME: AC00946

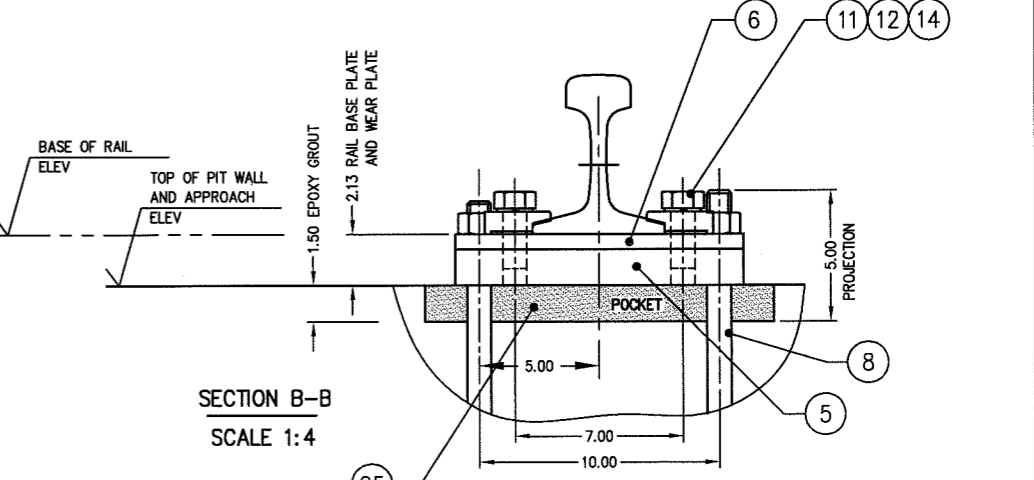
LAYERS USED: 1,2

SCALE	FIRST USED ON	DRAWING NO.	REV
1:40	J-17923	D-35631	SHT 1 OF 2



ITEM NO	DESCRIPTION	QTY	MATERIAL	UNIT WT	PART NO	SIZE	WT
1	END COPING	4	ASTM A36		B-35098		
2	SIDE COPING	2	ASTM A36		A-35099		
3	SIDE COPING, 25 FT	2	ASTM A36		A-35100		
4	LOAD CELL BASE PL (END)	4,4	ASTM A36		B-35097-1(LH), -2(RH)	1.50 X 19.00 X 24.00	
5	RAIL BASE PLATE 115 lb	8	ASTM A36		B-35103	1.50 X 12.00 X 30.00	
6	WEAR PLATE 115 lb	8	ASTM A36		B-35102	0.63 X 12.00 X 30.00	
7	LOAD CELL BASE PLATE (CTR)	2	ASTM A36		B-35160		
8	L-ANCHOR BOLT (W/NUT)	100	CS/ZN		1,000-8 UNC X 18.00	5.00 THREAD	
9	LEVELING SCREW, HEX HD	48	CS		0.500-13 UNC X 4.00	FULL THREAD	
10							ROMAR
11	HEX HEAD SCREW	48	CS/ZINC		1,00-8 UNC X 2.50	A-325	
12	LOCKWASHER	48	CS/ZINC		1.00		
13	HEX HEAD NUT	BY OTHERS	CS/ZINC		1,00-8 UNC	2H	
14	RAIL CLIP	BY OTHERS	CS		No 62		ROMAR
15	RAIL SPACER	BY OTHERS	CS		A-35068	1.50 OD TUBING X 0.234 WALL	
16	HEX HEAD SCREW	BY OTHERS	CS/ZINC		1,000-8 UNC X 5.00	GRADE 8	
17	L ANCHOR BOLT W/NUT	BY OTHERS	CS/ZINC		1,000-8 UNC X 18.00		
18	RAIL ANTI-CREEP, APPROACH - 115lb	BY OTHERS	ASTM A36		B-35067	L 0.38 X 3.50 X 3.50 X 28.00	
19	APPROACH RAIL BASE PLATE - 115lb	BY OTHERS	ASTM A36		B-35066	0.75 X 12.00 X 28.00	
20	LEVELING NUT	BY OTHERS	NYLON		1,000-8 UNC	94812A640	McMASTER-CARR
21							
22							
23							
24							
25	HP EPOXY GROUT	A/R	NON-SHRINK		FIVE STAR PRODUCTS, FAIRFIELD, CT.		BY OTHERS
26	REBAR, TRANSVERSE				#6 - 114.00		BY OTHERS
27	REBAR, LONGITUDINAL				#5 - AS PER DETAILER		BY OTHERS
28	REBAR, LONGITUDINAL				#6 - AS PER DETAILER		BY OTHERS
29	REBAR, LONGITUDINAL				#5 - AS PER DETAILER		BY OTHERS
30	REBAR, VERTICAL WALL				#5 - 48.00		BY OTHERS
31	REBAR, TRANSVERSE WALL				#6 - 106.00		BY OTHERS
32	REBAR, LONGITUDINAL WALL				#6 - 360.00		BY OTHERS
33							
34	REBAR, TRANSVERSE				#5 - 114.00		BY OTHERS
35	REBAR, FORMED				#6 60 49 24		BY OTHERS
36	REBAR, FORMED				#6 12 12 12		BY OTHERS
37	REBAR, FORMED				#6 24 24 24		BY OTHERS

- GENERAL NOTES:
- ALL CONSTRUCTION AND FOUNDATION MATERIALS MUST BE IN ACCORDANCE WITH A.A.R. SCALE HANDBOOK LATEST REVISION.
 - THE FOUNDATION DESIGN IS BASED ON A SOIL BEARING CAPACITY OF AT LEAST 4,000 LB PER SQ FT.
 - A SOIL ANALYSIS OF THE INSTALLATION MUST BE COMPLETED TO DETERMINE THE ACTUAL SOIL BEARING CAPACITY. IF SOIL DOES NOT HAVE BEARING CAPACITY OF AT LEAST 4,000 LB PER SQ FT, AND ITS BEARING CAPACITY CANNOT BE INCREASED BY DRAINAGE, STABILIZATION, OR OTHER MEANS, PILE FOUNDATION SHALL BE PROVIDED.
 - CONCRETE SPECIFICATION:
COMPRESSIVE STRENGTH OF 4,000 PSI AT 28 DAYS. MAXIMUM SIZE AGGREGATE TO BE 3/4 STONE.
AIR ENTRAINMENT AND PLACED IN ACCORDANCE WITH ACI STD. 318-89.
 - REBAR:
5.1 MINIMUM BAR OVERLAP OF 48 INCHES
5.2 EMBEDMENT: 3 INCHES AGAINST EARTH
2 INCHES AGAINST EXPOSED SURFACES OR FORMS.
5.3 DEFORMED BILLET STEEL CONFORMING TO ASTM SPECIFICATION A-615, GRADE 60.



CUSTOMER: CAROLINA COTTON SEED CO.
KINGSTON, NC
A.R.E.A. 115 lb RAIL

- INSTALLATION NOTES:
- SET LOAD CELL BASE PLATE TO PROPER HEIGHT AND LEVEL AS SPECIFIED, USING GREASED LEVELING SCREWS.
 - LAY GROUT.
 - FASTEN BASE PLATE DOWN TO PRESET LEVELING SCREWS. DOUBLE CHECK HEIGHT AND LEVEL.
 - REMOVE LEVELING SCREWS AFTER APPROX 2 - 3 HOURS. TIGHTEN ANCHOR BOLTS WHEN PLACING LOAD CELLS.

FOR REFERENCE ONLY
Not for Construction

REV	DESCRIPTION	DATE	BY

THIS DRAWING IS THE PROPERTY OF EMERY WINSLOW SCALE COMPANY SEYMOUR, CONNECTICUT. THE INFORMATION CONTAINED HEREIN IS CONFIDENTIAL AND IS NOT TO BE USED OR DISSEMINATED TO OTHERS WITHOUT THE EXPRESS WRITTEN CONSENT OF EMERY WINSLOW SCALE COMPANY.

ALL SHARP CORNERS AND EDGES TO BE BROKEN
DIMENSIONS ARE IN INCHES.
TOLERANCES UNLESS SPECIFIED OTHERWISE:
MACHINING: .005
STRUCTURAL: .13

DRAWN: CBM DATE: 8/26/02
CHECKED: D.L.ZOG DATE: 9/9/02
ACAD FILENAME: AC00946
LAYERS USED: 2,3

EMERY WINSLOW SCALE COMPANY
SEYMOUR, CT U.S.A TERRE HAUTE, IN.

MULTI-MODULE RAILROAD TRACK SCALE
MODEL 66-170-12.5/25
SHALLOW PIT FOUNDATION SECTION

SCALE: AS NOTED (PLOT 1:40)
FIRST USED ON: J-17923
DRAWING NO.: D-35631
REV: 2 OF 2