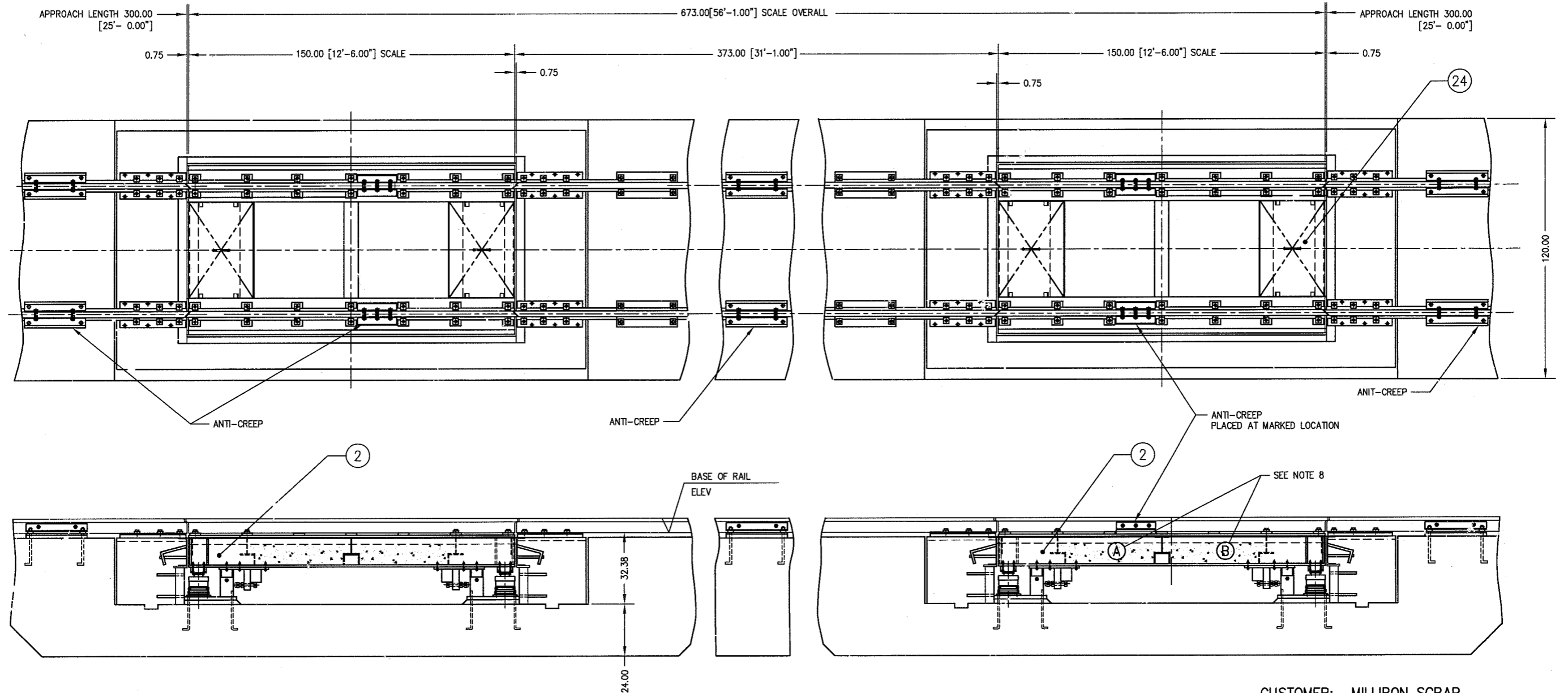
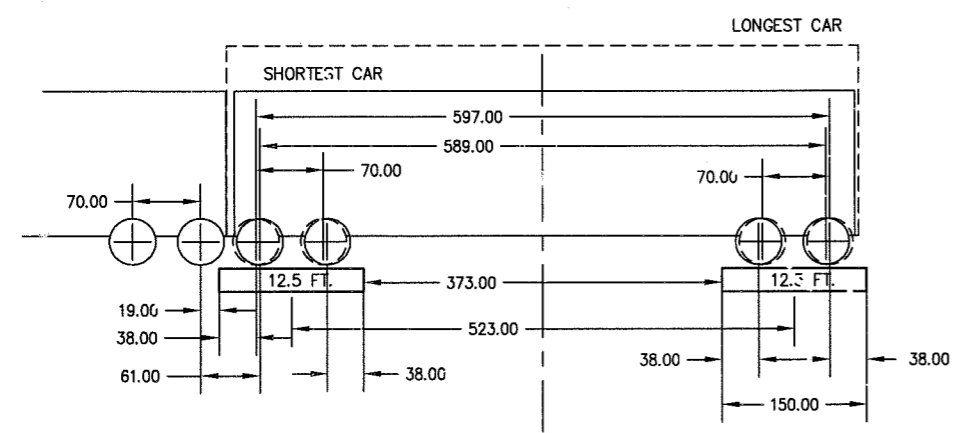


ITEM NO	DESCRIPTION	QTY	MATERIAL	UNIT WT	PART NO	SIZE	WT
---------	-------------	-----	----------	---------	---------	------	----



CUSTOMER: MILLIRON SCRAP
MANSFIELD, OH

SERVICING RAILROAD: NORFOLK SOUTHERN



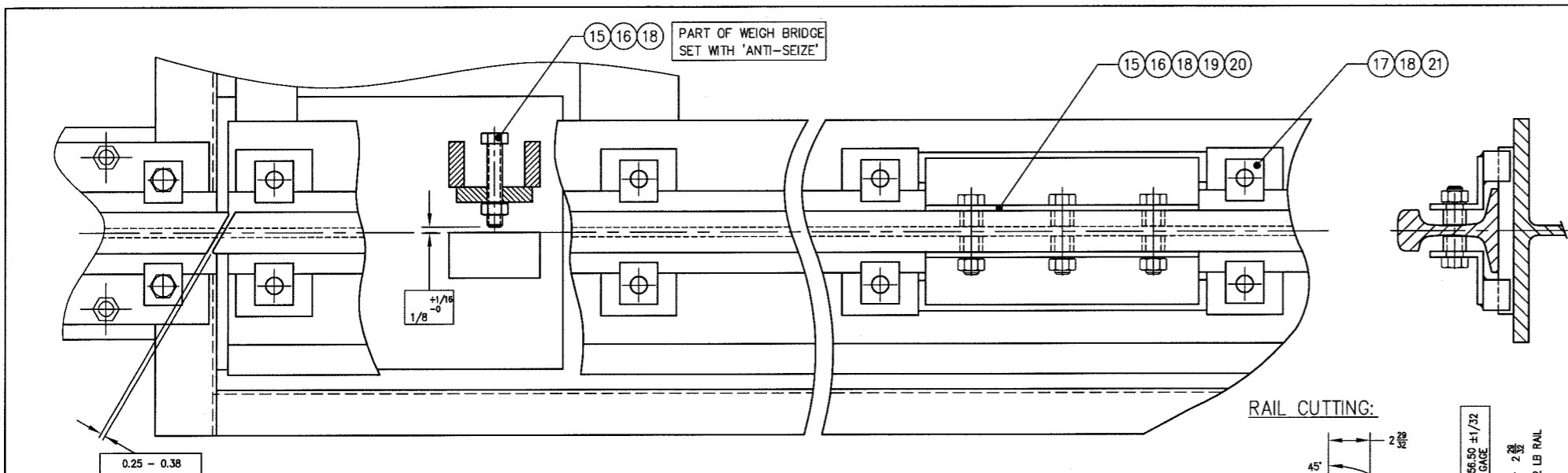
FOR REFERENCE ONLY
Not for Construction

- NOTES:
- RTS DESIGN AS PER A.A.R. LATEST REVISION
 - WEIGH BRIDGE DESIGN FOR COOPER E80 LOADING
 - SECTIONAL CAPACITY 85 TON
 - SCALE CAPACITY 170 TON
 - RTS NTEP C.O.C. No. 97-122
 - HYDROSTATIC LOAD CELL 136-100RR (100,000 LB CAPACITY)
NTEP C.O.C. No. 88-239-PA1
 - WEIGH RAIL A.R.E.A. 132 lb. (BY OTHERS)
 - FILL BAYS 'A' AND 'B' WITH ANY GRADE OF CONCRETE TO TOP OF TRANSVERSE BEAMS, BEFORE OR AFTER ASSEMBLY. (USED FOR BALLAST ONLY - 1.0 CU YD PER PLATFORM)

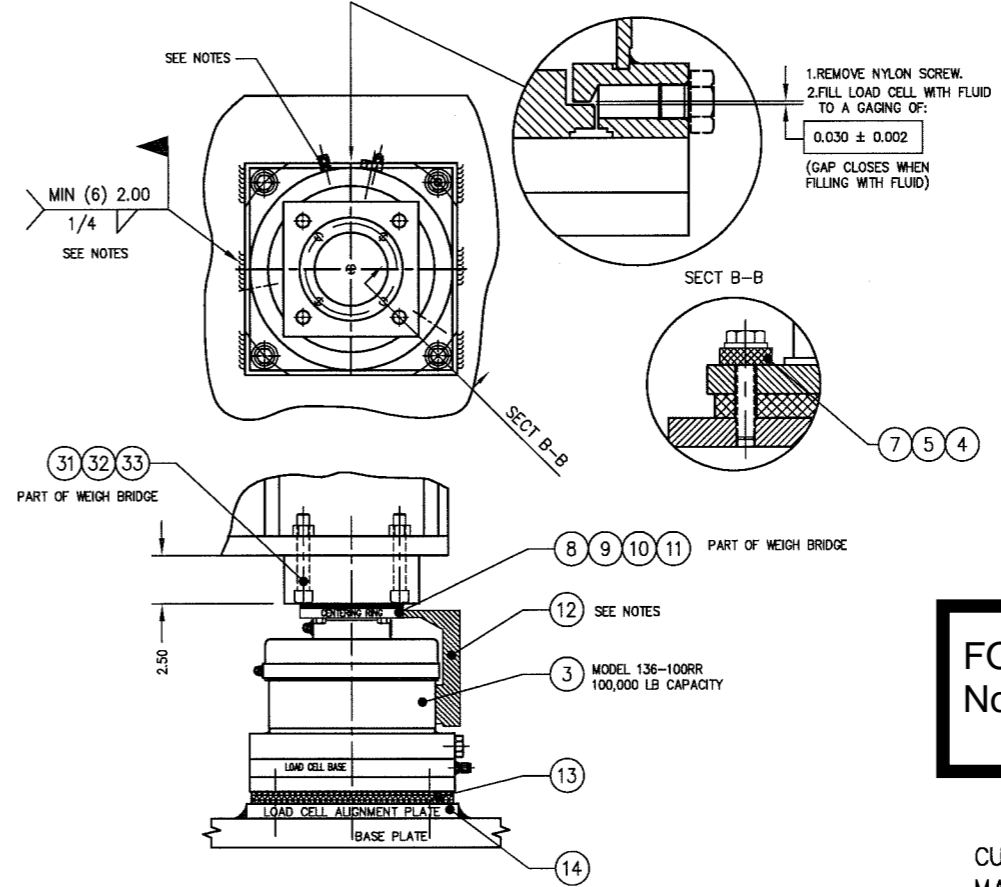
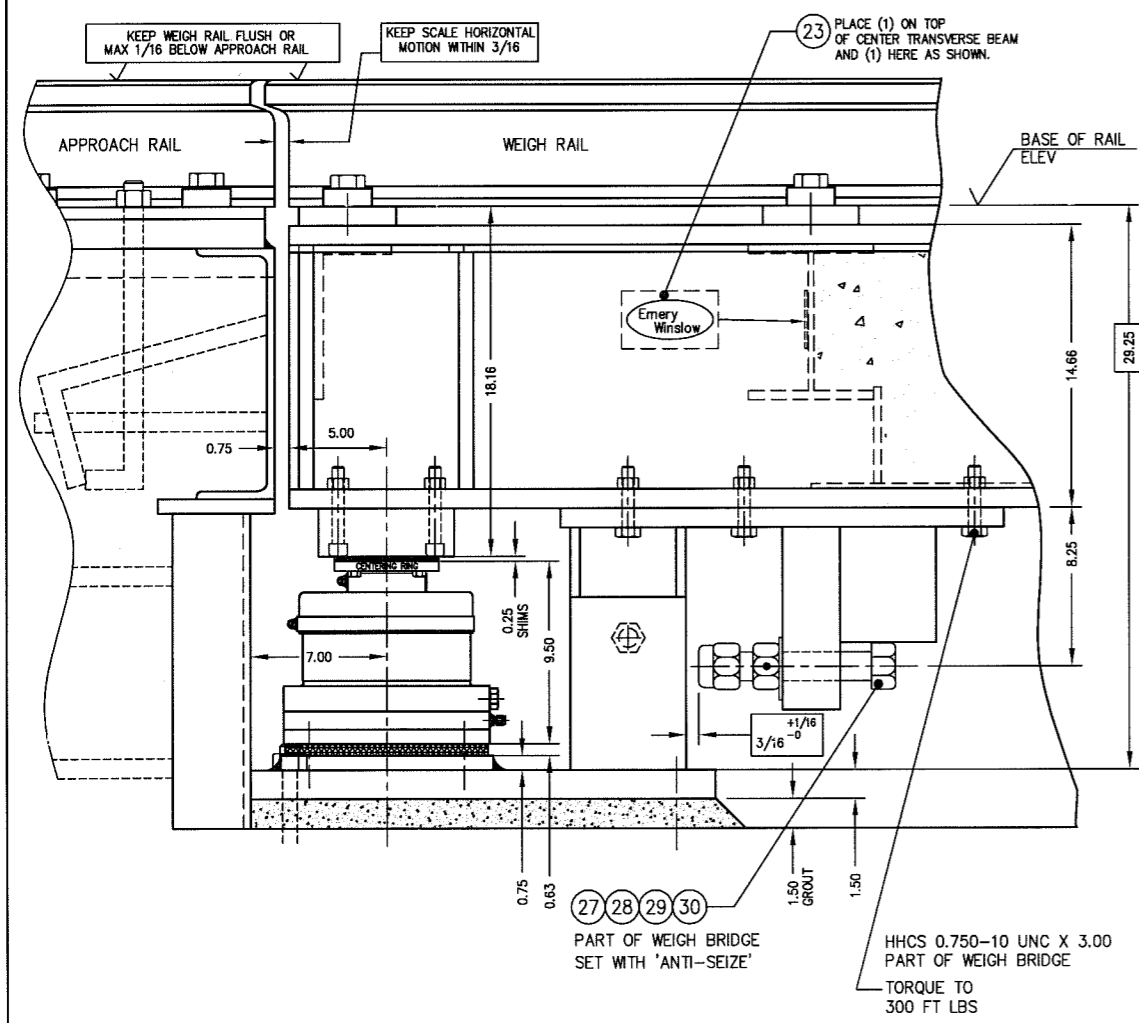
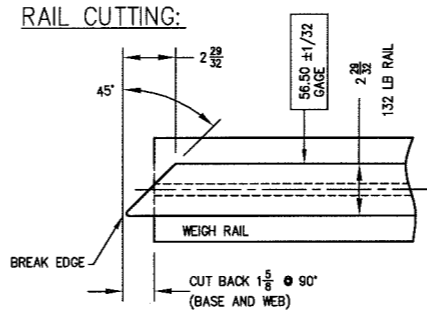
REF DWGS:

D-35859 SHT 2/2	ASSEMBLY DETAIL AND BILL OF MATERIAL LIST
D-35860 SHT 1/2	FOUNDATION
D-35860 SHT 2/2	FOUNDATION SECTION AND BILL OF MATERIAL
B-35072	TUBING DIAGRAM

ALL SHARP CORNERS AND EDGES TO BE BROKEN		EMERY WINSLOW SCALE COMPANY SEYMOUR, CT U.S.A. TERRE HAUTE, IN.	
DIMENSIONS ARE IN INCHES. TOLERANCES UNLESS SPECIFIED OTHERWISE: MACHINING ± .010 STRUCTURAL ± .13		MULTI-MODULE RAILROAD TRACK SCALE MODEL 64-170-12.5/12.5 SHALLOW PIT ASSEMBLY	
REV	DESCRIPTION	DATE	BY
THIS DRAWING IS THE PROPERTY OF EMERY WINSLOW SCALE COMPANY, SEYMOUR, CONNECTICUT. THE INFORMATION CONTAINED HEREIN IS CONFIDENTIAL AND IS NOT TO BE USED OR DISSEMINATED TO OTHERS WITHOUT THE EXPRESS WRITTEN CONSENT OF EMERY WINSLOW SCALE COMPANY.		DRAWN: CEM DATE: 8/26/03	SCALE: 1:25
		CHECKED: DJLZG DATE: 8/03	FIRST USED ON: DRAWING NO. D-35859
		ACAD FILENAME: ACD1088	REV 1 OF 2
		LAYERS USED: ALL	



ITEM NO	DESCRIPTION	QTY	MATERIAL	UNIT WT	PART NO	SIZE	WT
1							
2	WEIGH BRIDGE 12.5'	2	ASTM A36		D-35861	131, 132, 133 lb RAIL	
3	LOAD CELL	8	SS 304		D-35809	136-100RR	
4	HHCS	32	SS 304		0.500-13UNC X 2.25		
5	WASHER MS 15795	32	SS 304		0.531 ID X 1.06 OD		
6							
7	WASHER	32	NEOPRENE		A-19911		
8	SHIM	REF	SS 304		A-29869-1	0.06 THICK	
9	SHIM	REF	SS 304		A-29869-2	0.03 THICK	
10	CENTERING RING	REF	CS/ZN		B-29871		
11	HEX HD SCREW	REF	SS 304		0.375-16 UNC X 1.25		
12	ALIGNMENT GAGE	1	ALUM		B-30305-1		
13	SHOCK PAD	8	NEOPRENE		A-35819	SQUARE 10.50 X 10.50	
14	LOAD CELL ALIGN PLATE	8	CS		B-35818	END 11.00 X 11.00	
15	HHCS	12	CS/ZN		1.00-8 UNC X 5.00	FULL THREAD, GRD 8	
16	HEX HD NUT	12	CS/ZN		1.00-8 UNC		
17	HHCS	56	CS/ZN		1.00-8 UNC X 2.00	TYPE A-325	
18	LOCK WASHER	68	CS/ZN		1.00		
19	RAIL ANTI-CREEP (SCALE)	8	CS		B-35617	115 - 133 lb	
20	RAIL SPACER	24	CS		A-35068		
21	RAIL CLIPS	56	CS		No 62	ROMAR	
22							
23	SCALE NAME TAG	2	SS		B-34821		
24	REMOVABLE COVER	4	CS		B-35113	0.25 4-WAY SAFETY PLATE	
25							
26							
27	HHSC	REF	CS/ZN		1.500-6 UNC X 8.00	FULL THREAD, GRD 8	
28	LOCK NUT ASSEMBLY	REF	CS/ZN		A-32576	1.500-6 UNC 2H	
29	BUMPER HEAD	REF	CS/ZN		A-32713-Y		
30	WASHER	REF	SS 304		1.500		
31	SHCS	REF	CS/ZN		0.625-11 UNC X 4.00	GRD 8	
32	HEX HD NUT	REF	CS/ZN		0.625-11 UNC	2H	
33	LOCKWASHER	REF	CS/ZN		0.625		



FOR REFERENCE ONLY
Not for Construction

AMERICAN RAILROAD REQUIREMENTS

1. THE APPROACH RAILS SHALL BE IN THE SAME PLANE AND ALIGNMENT AS THE WEIGH RAILS WITHIN 1/32 AND SHALL BE PROPERLY ANCHORED TO PREVENT CREEPAGE OF APPROACH RAILS IN ORDER TO MAINTAIN THE GAP BETWEEN THE WEIGH RAIL AND THE APPROACH RAIL HEAD.
2. EXPANSION RAILS ARE REQUIRED AT BOTH APPROACHES TO MINIMIZE THE EFFECT OF THERMAL EXPANSION.
3. THE GAP BETWEEN THE WEIGH RAIL HEADS AND THE APPROACH RAIL HEADS SHOULD NOT BE LESS THAN 1/4 INCH NOR GREATER THAN 3/8 INCH.
4. TRAIN SPEED MUST NOT EXCEED 8 MPH.
5. KEEP SCALE LONGITUDINAL MOTION WITHIN 3/16 AND TRANSVERSE MOTION WITHIN 1/8.
6. WEIGH RAIL SHOULD BE NEW AND CONTINUOUS OVER ENTIRE SCALE LENGTH.

INSTALLATION NOTES:

1. ASSEMBLE LOAD CELL, SHOCK PAD AND ALIGNMENT PLATE.
2. PLACE WHOLE ASSEMBLY ON BASE PLATE. (TUBE FITTINGS SHOULD FACE A POSITION TO FACILITATE TUBING AND PURGING)
3. LOWER STRUCTURE ONTO LOAD CELL.
4. CENTER LOAD CELL BASE WITH RESPECT TO CENTERING RING BY USING ALIGNMENT GAGE AND MOVING WHOLE ASSEMBLY.
5. VERIFY SCALE BRIDGE LOCATION AND DOUBLE CHECK LOAD CELL ALIGNMENT. WELD ALIGNMENT PLATE.
6. TIGHTEN BOLTS.

CUSTOMER: MILLIRON SCRAP
MANSFIELD, OH
RAIL A.R.E.A 132 lb

ALL SHARP CORNERS AND EDGES TO BE BROKEN		DIMENSIONS ARE IN INCHES. TOLERANCES UNLESS SPECIFIED OTHERWISE:		EMERY WINSLOW SCALE COMPANY SEYMOUR, CT U.S.A TERRE HAUTE, IN.	
MACHINING ±.010		STRUCTURAL ±.13		MULTI-MODULE RAILROAD TRACK SCALE MODEL 64-170-12.5/25 ASSEMBLY DETAILS - SHALLOW PIT	
A	B-35617 WAS B-35092	1/22/04	CBM	DRAWN: CBM DATE: 8/26/03	
REV	DESCRIPTION	DATE	BY	CHECKED: D.OLZOO DATE: 8/03	
THIS DRAWING IS THE PROPERTY OF EMERY WINSLOW SCALE COMPANY SEYMOUR, CONNECTICUT. THE INFORMATION CONTAINED HEREIN IS CONFIDENTIAL AND IS NOT TO BE USED OR DISSEMINATED TO OTHERS WITHOUT THE EXPRESS WRITTEN CONSENT OF EMERY WINSLOW SCALE COMPANY.				ACAD FILENAME: AC01089	
LAYERS USED: 2,3				SCALE	1:5
				FIRST USED ON	DRAWING NO.
				D-35859	2 OF 2
				REV	A