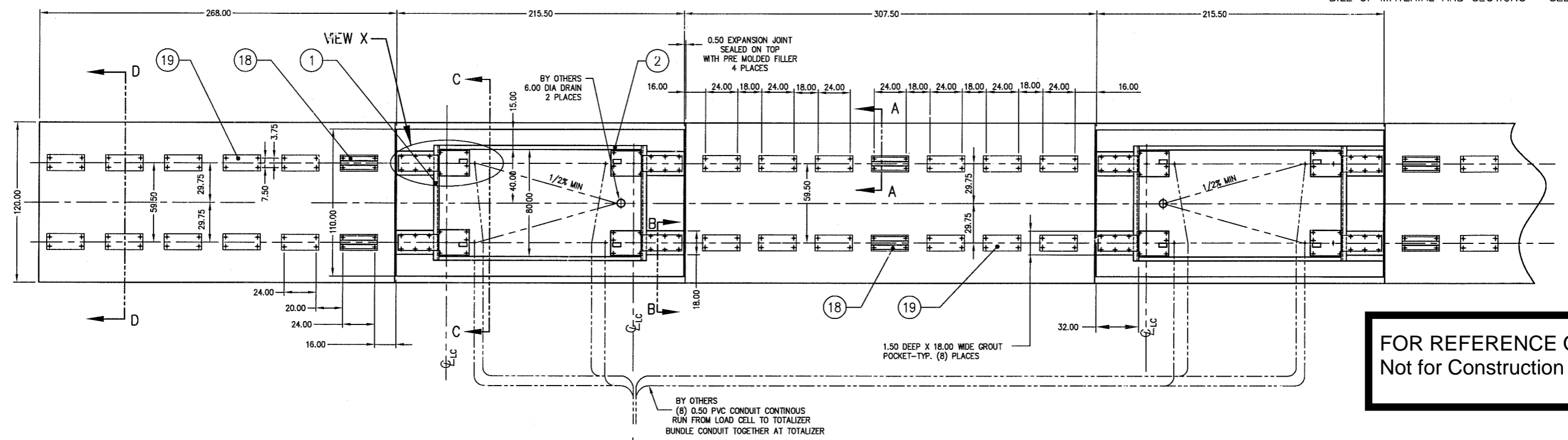
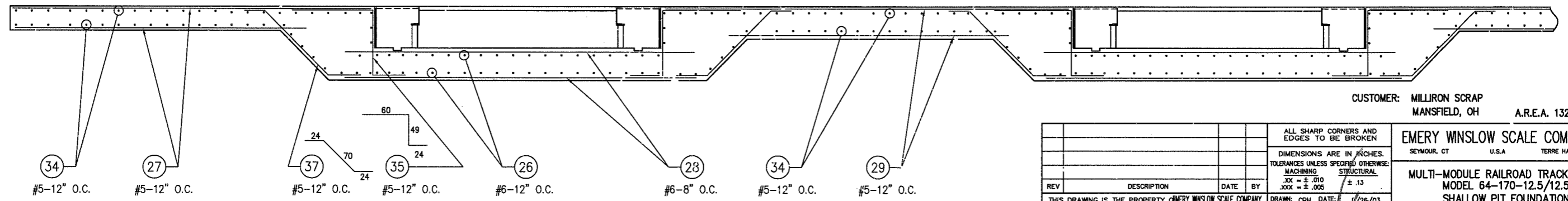
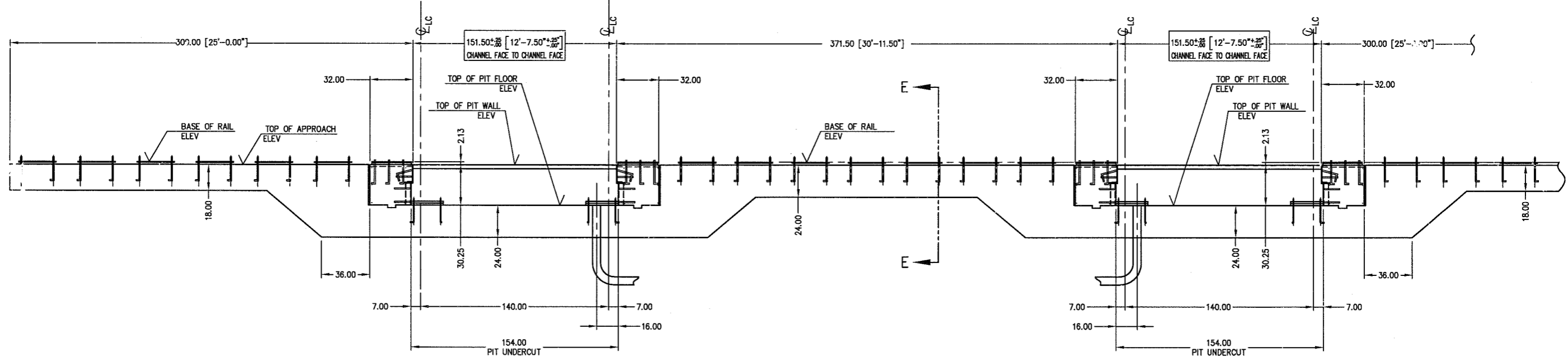


ITEM NO	DESCRIPTION	QTY	MATERIAL	UNIT WT	PART NO	SIZE	WT
---------	-------------	-----	----------	---------	---------	------	----

BILL OF MATERIAL AND SECTIONS - SEE SHEET 2

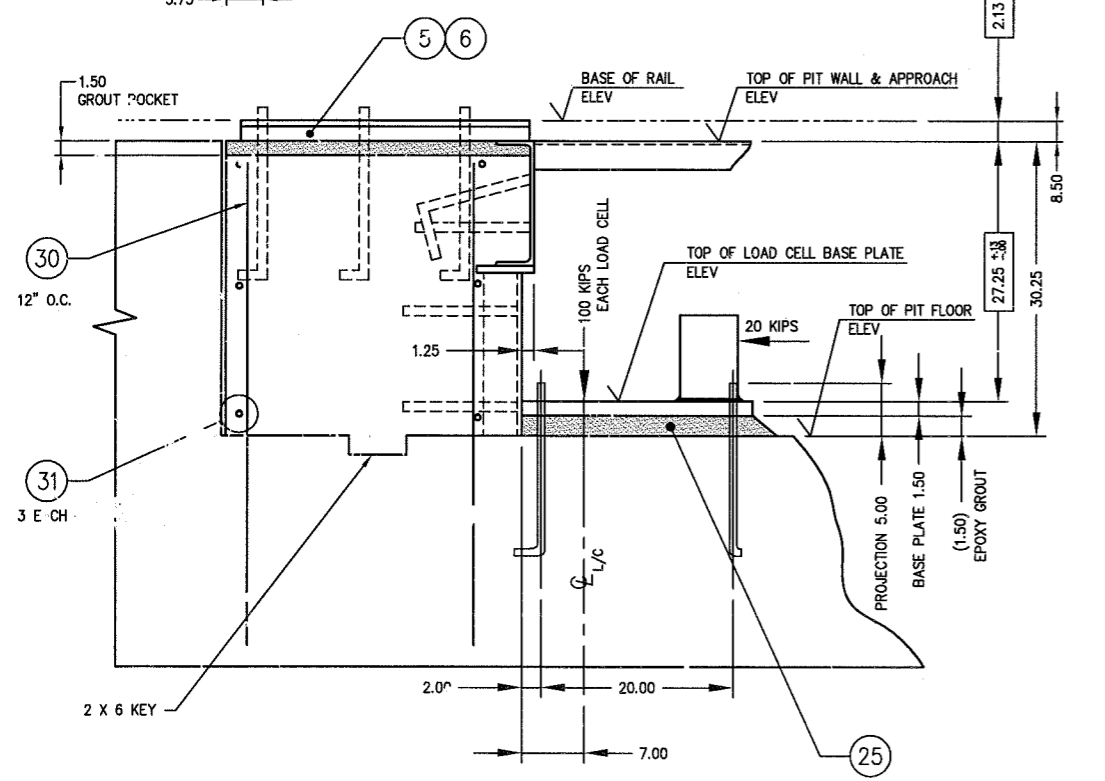
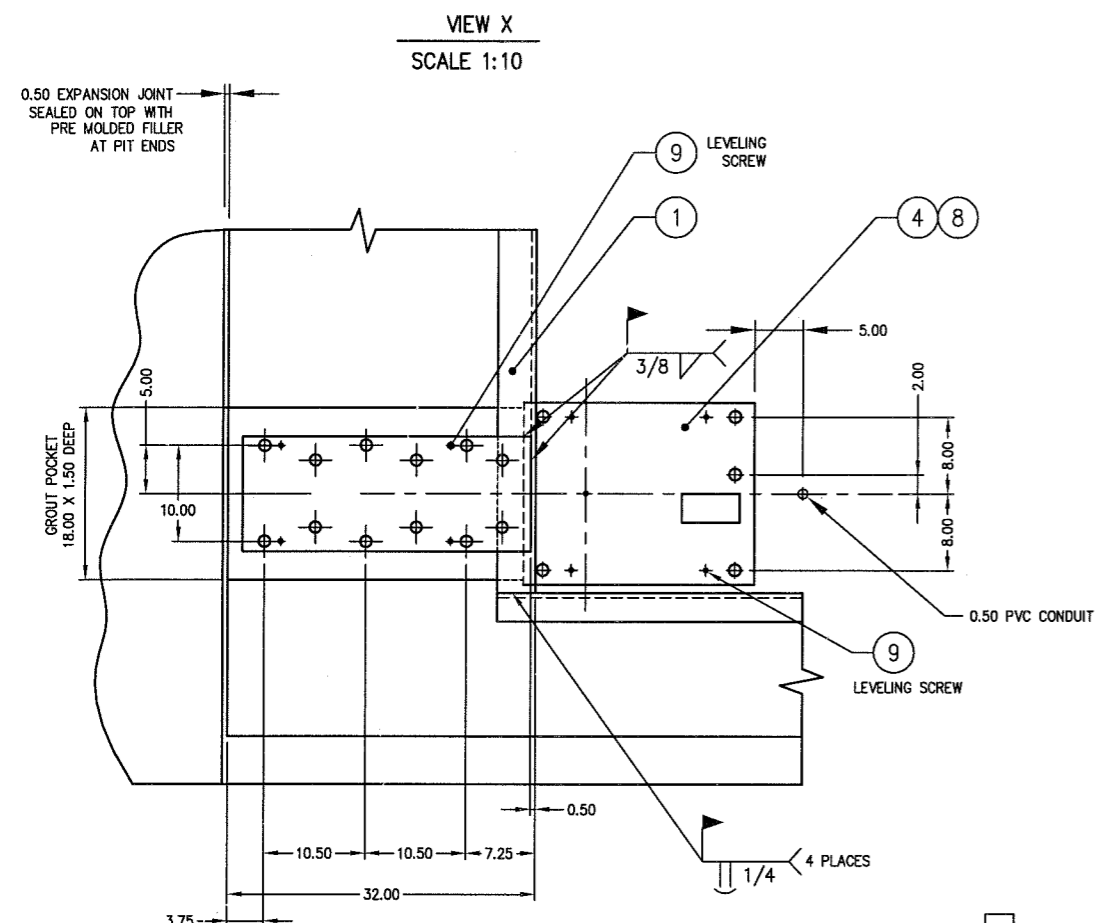


**FOR REFERENCE ONLY**  
Not for Construction

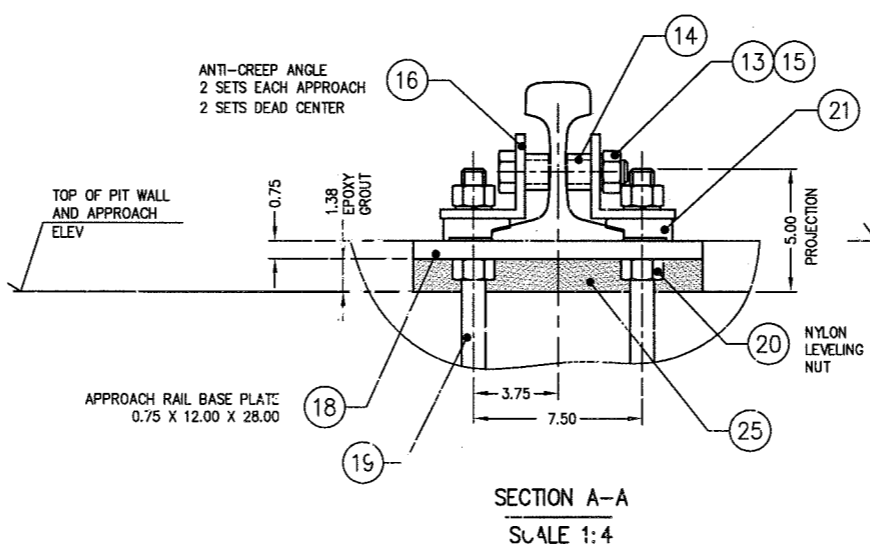
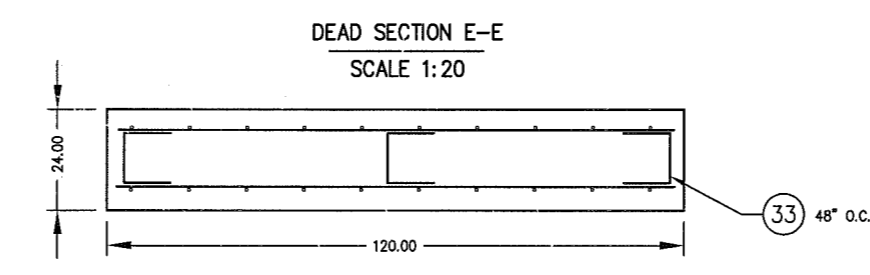
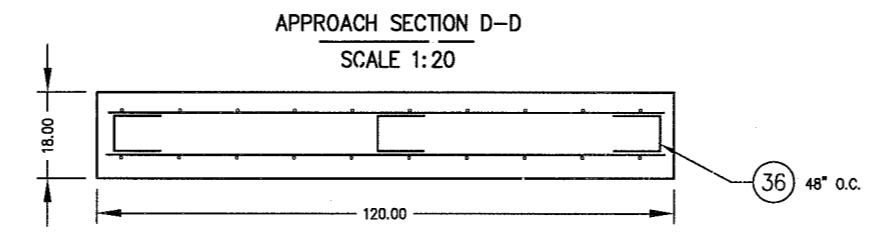
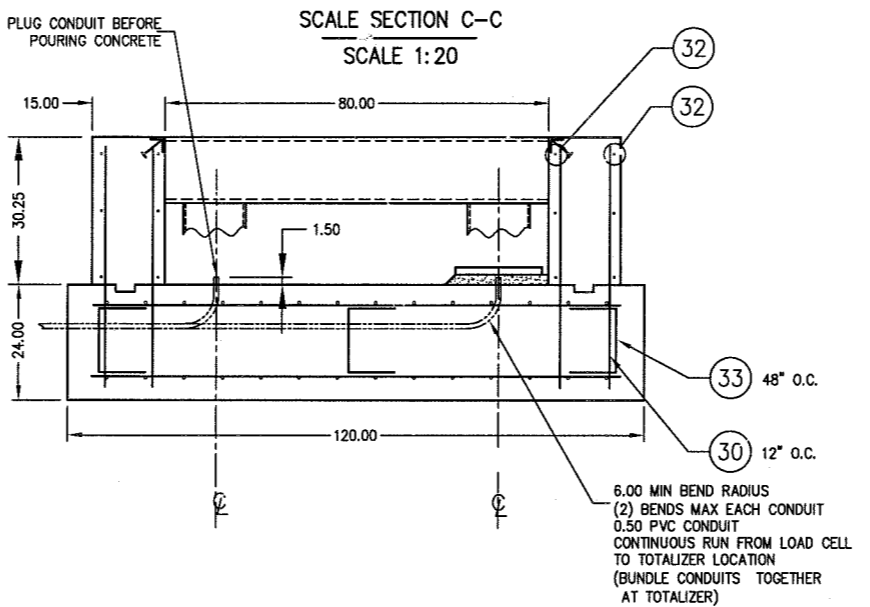


CUSTOMER: MILLIRON SCRAP  
MANSFIELD, OH A.R.E.A. 132 lb RAIL

ALL SHARP CORNERS AND EDGES TO BE BROKEN				EMERY WNSLOW SCALE COMPANY SEYMOUR, CT U.S.A. TERRE HAUTE, IN.	
DIMENSIONS ARE IN INCHES. TOLERANCES UNLESS SPECIFIED OTHERWISE:				MULTI-MODULE RAILROAD TRACK SCALE MODEL 64-170-12.5/12.5 SHALLOW PIT FOUNDATION	
MACHINING ±.010				DRAWN: CBM DATE: 1/28/03	
STRUCTURAL ±.13				CHECKED: D.OLZOG DATE: 1/28/03	
THIS DRAWING IS THE PROPERTY OF EMERY WNSLOW SCALE COMPANY, SEYMOUR, CONNECTICUT. THE INFORMATION CONTAINED HEREIN IS CONFIDENTIAL AND IS NOT TO BE USED OR DISSEMINATED TO OTHERS WITHOUT THE EXPRESS WRITTEN CONSENT OF EMERY WNSLOW SCALE COMPANY.				SCALE: 1:40 FIRST USED ON: J-18507 DRAWING NO.: D-35860 SHEET 1 OF 2	
ACAD FILENAME: AC1090				LAYERS USED: 1,2	

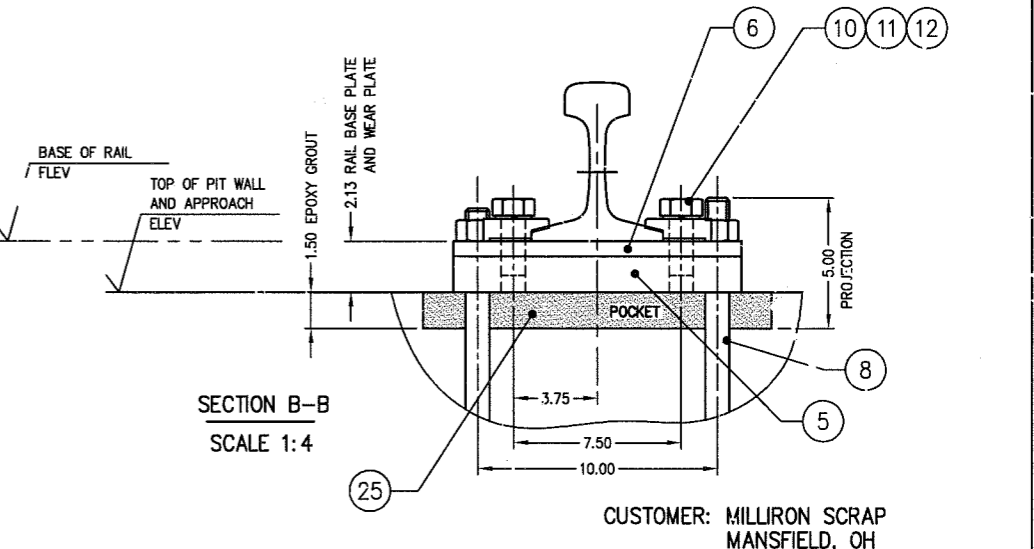


- INSTALLATION NOTES:**
1. SET LOAD CELL BASE PLATE TO PROPER HEIGHT AND LEVEL AS SPECIFIED, USING GREASED LEVELING SCREWS.
  2. LAY GROUT.
  3. FASTEN BASE PLATE DOWN TO PRESET LEVELING SCREWS. DOUBLE CHECK HEIGHT AND LEVEL.
  4. REMOVE LEVELING SCREWS AFTER APPROX 2 - 3 HOURS. TIGHTEN ANCHOR BOLTS WHEN PLACING LOAD CELLS.



ITEM NO	DESCRIPTION	QTY	MATERIAL	UNIT WT	PART NO	SIZE	WT
1	END COPING	4	ASTM A36		B-35098		
2	SIDE COPING	4	ASTM A36		A-35099		
3							
4	LOAD CELL BASE PL (END)	4,4	ASTM A36		B-35097-1(LH), -2(RH)	1.50 X 19.00 X 24.00	
5	RAIL BASE PLATE 131-133 lb	8	ASTM A36		B-35075	1.50 X 12.00 X 30.00	
6	WEAR PLATE 131-133 lb	8	ASTM A36		B-35076	0.63 X 12.00 X 30.00	
7							
8	L-ANCHOR BOLT (W/NUT)	88	CS/ZN		1.000-8 UNC X 18.00	5.00 THREAD	
9	LEVELING SCREW, HEX HD	64	CS		0.500-13 UNC X 4.00	FULL THREAD	
10	RAIL CLIP	48	CS		No 62	ROMAR	
11	HEX HEAD SCREW	48	CS/ZINC		1.000-8 UNC X 2.50	A-325	
12	LOCKWASHER	48	CS/ZINC		1.000		
13	HEX HEAD NUT	12	CS/ZINC		1.000-8 UNC	2H	
14	RAIL SPACER	24	CS		A 35068	1.50 OD TUBING X 0.234 WALL	
15	HEX HEAD SCREW	12	CS/ZINC		1.000-8 UNC X 5.00	GRADE 8	
16	RAIL ANTI-CREEP, APPROACH - 131-133 lb	12	ASTM A36		B-35081	L 0.38 X 3.50 X 3.50 X 28.00	
17							
18	APPROACH RAIL BASE PLATE - 131-133 lb	38	ASTM A36		B-35074	0.75 X 12.00 X 28.00	
19	L ANCHOR BOLT W/NUT	152	CS		1.000-8 UNC X 18.00		
20	LEVELING NUT W/NUT	152	NYLON		1.000-8 UNC	94812A640	McMASTER-CARR
21	RAIL CLIP	152	CS		No 62	ROMAR	
22							
23							
24							
25	HP EPOXY GROUT	A/R	NON-SHRINK		FIVE STAR PRODUCTS, FAIRFIELD, CT.		BY OTHERS
26	REBAR, TRANSVERSE				#6 - 114.00		BY OTHERS
27	REBAR, LONGITUDINAL				#5 - AS PER DETAILER		BY OTHERS
28	REBAR, LONGITUDINAL				#6 - AS PER DETAILER		BY OTHERS
29	REBAR, LONGITUDINAL				#5 - AS PER DETAILER		BY OTHERS
30	REBAR, VERTICAL WALL				#5 - 48.00		BY OTHERS
31	REBAR, TRANSVERSE WALL				#6 - 106.00		BY OTHERS
32	REBAR, LONGITUDINAL WALL				#6 - 360.00		BY OTHERS
33							
34	REBAR, TRANSVERSE				#5 - 114.00		BY OTHERS
35	REBAR, FORMED				#6 60 49 24		BY OTHERS
36	REBAR, FORMED				#6 12 12		BY OTHERS
37	REBAR, FORMED				#6 24 24		BY OTHERS

- GENERAL NOTES:**
- BY OTHERS
  - 1. ALL CONSTRUCTION AND FOUNDATION MATERIALS MUST BE IN ACCORDANCE WITH A.A.R. SCALE HANDBOOK LATEST REVISION.
  - 2. THE FOUNDATION DESIGN IS BASED ON A SOIL BEARING CAPACITY OF AT LEAST 4,000 LB PER SQ FT.
  - 3. A SOIL ANALYSIS OF THE INSTALLATION MUST BE COMPLETED TO DETERMINE THE ACTUAL SOIL BEARING CAPACITY. IF SOIL DOES NOT HAVE BEARING CAPACITY OF AT LEAST 4,000 LB PER SQ FT, AND ITS BEARING CAPACITY CANNOT BE INCREASED BY DRAINAGE, STABILIZATION, OR OTHER MEANS, PILE FOUNDATION SHALL BE PROVIDED.
  - 4. CONCRETE SPECIFICATION: COMPRESSIVE STRENGTH OF 4,000 PSI AT 28 DAYS. MAXIMUM SIZE AGGREGATE TO BE 3/4" STONE. AIR ENTRAINED AND PLACED IN ACCORDANCE WITH ACI STD. 318-89.
  - 5. REBAR:
    - 5.1 MINIMUM BAR OVERLAP OF 48 INCHES
    - 5.2 EMBEDMENT: 3 INCHES AGAINST EARTH 2 INCHES AGAINST EXPOSED SURFACES OR FORMS.
    - 5.3 DEFORMED BILLET STEEL CONFORMING TO ASTM SPECIFICATION A-615, GRADE 60.



CUSTOMER: MILLIRON SCRAP  
MANSFIELD, OH  
A.R.E.A. 132 lb RAIL

**FOR REFERENCE ONLY**  
Not for Construction

REV	DESCRIPTION	DATE	BY

ALL SHARP CORNERS AND EDGES TO BE BROKEN

DIMENSIONS ARE IN INCHES.

TOLERANCES UNLESS SPECIFIED OTHERWISE:

MACHINING .XX = ± .010 .XXX = ± .005

STRUCTURAL ± .13

THIS DRAWING IS THE PROPERTY OF EMERY WINSLOW SCALE COMPANY SEYMOUR, CONNECTICUT. THE INFORMATION CONTAINED HEREIN IS CONFIDENTIAL AND IS NOT TO BE USED OR DISSEMINATED TO OTHERS WITHOUT THE EXPRESS WRITTEN CONSENT OF EMERY WINSLOW SCALE COMPANY.

DRAWN: CBM DATE: 8/26/03

CHECKED: DLZ DATE: 8/03

ACAD FILENAME: ACO1090

LAYERS USED: 2,3

EMERY WINSLOW SCALE COMPANY  
SEYMOUR, CT U.S.A. TERRE HAUTE, IN.

MULTI-MODULE RAILROAD TRACK SCALE  
MODEL 64-170-12.5/12.5  
SHALLOW PIT FOUNDATION SECTION

SCALE AS NOTED (PLOT 1:40)

FIRST USED ON J-18507

DRAWING NO. D-35860

REV J-18507 D-35860 SHIT 2 OF 2