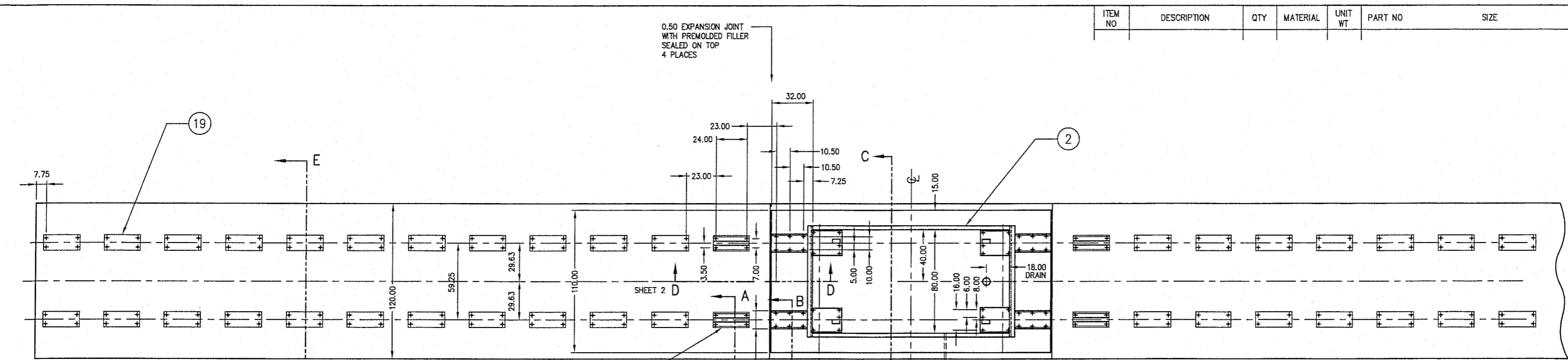
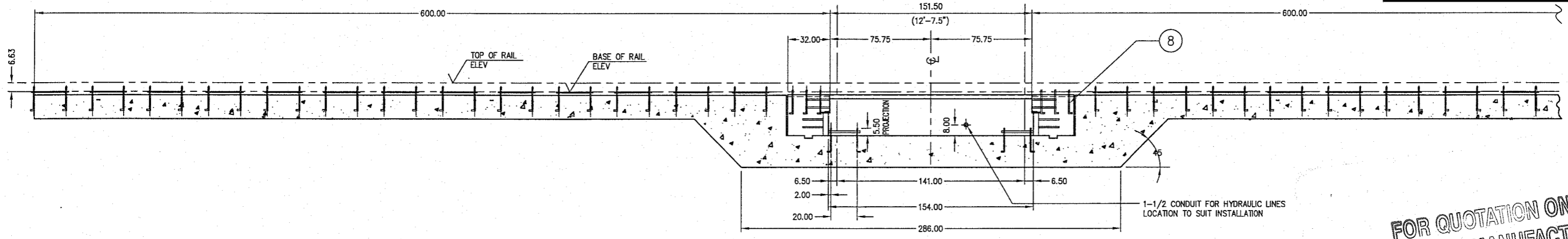


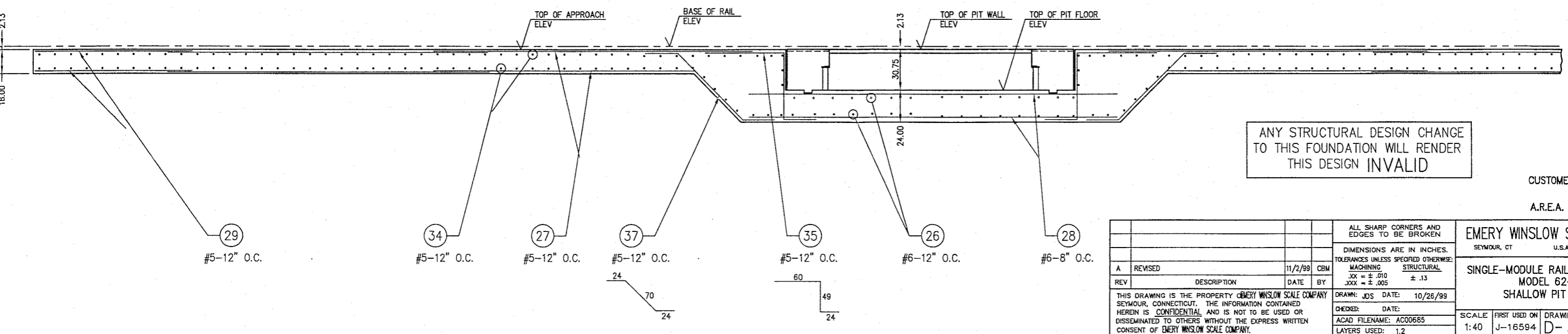
ITEM NO	DESCRIPTION	QTY	MATERIAL	UNIT WT	PART NO	SIZE	WT
---------	-------------	-----	----------	---------	---------	------	----



**FOR REFERENCE ONLY  
Not for Construction**



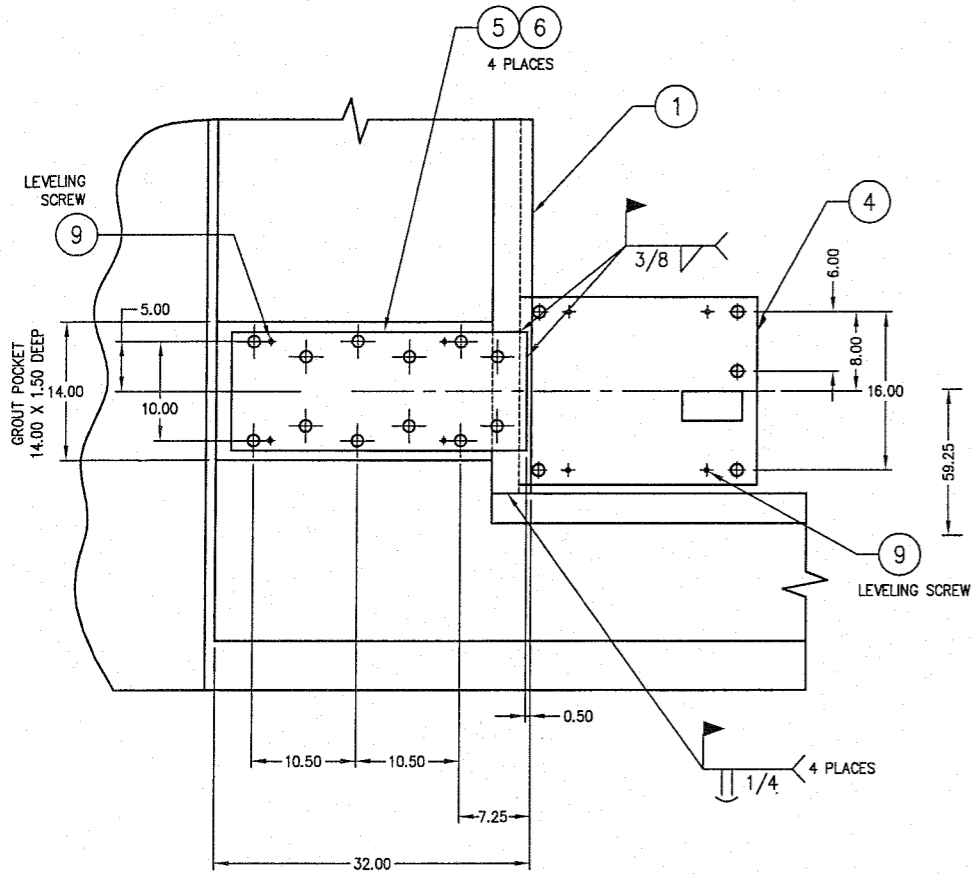
**FOR QUOTATION ONLY  
NOT FOR MANUFACTURE**



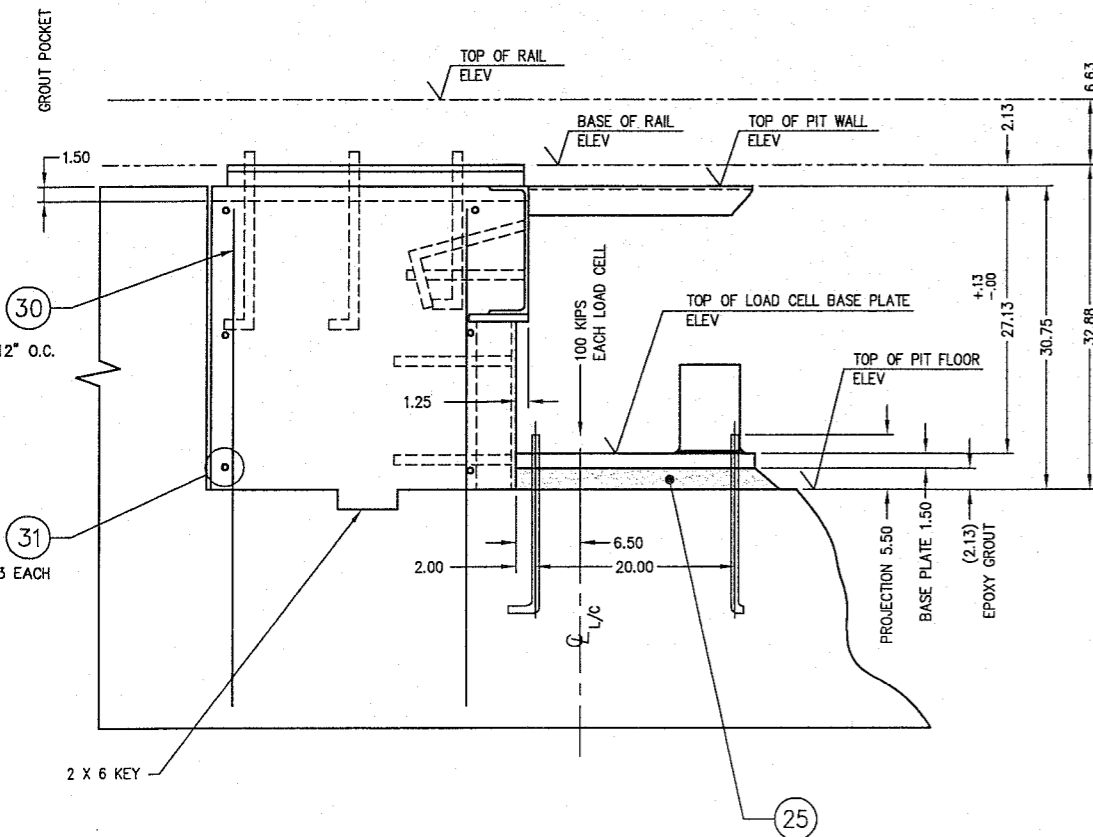
**ANY STRUCTURAL DESIGN CHANGE  
TO THIS FOUNDATION WILL RENDER  
THIS DESIGN INVALID**

CUSTOMER: VULCAN SPIKE CO.  
LIPCOMB, AL  
A.R.E.A. 115 LB RAIL

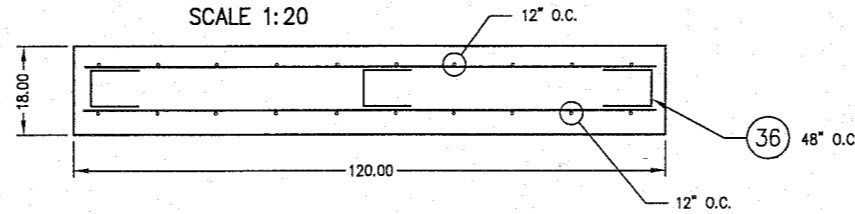
ALL SHARP CORNERS AND EDGES TO BE BROKEN		EMERY WINSLOW SCALE COMPANY SEYMOUR, CT U.S.A. TERRE HAUTE, IN.	
DIMENSIONS ARE IN INCHES. TOLERANCES UNLESS SPECIFIED OTHERWISE:		SINGLE-MODULE RAILROAD TRACK SCALE MODEL 62-85-12.5 SHALLOW PIT FOUNDATION	
MACHINING .XX = ± .010 .XXX = ± .005		STRUCTURAL ± .13	
REV	DESCRIPTION	DATE	BY
A	REVISED	11/2/99	CBM
THIS DRAWING IS THE PROPERTY OF EMERY WINSLOW SCALE COMPANY, SEYMOUR, CONNECTICUT. THE INFORMATION CONTAINED HEREIN IS CONFIDENTIAL AND IS NOT TO BE USED OR DISSEMINATED TO OTHERS WITHOUT THE EXPRESS WRITTEN CONSENT OF EMERY WINSLOW SCALE COMPANY.		DRAWN: JDS DATE: 10/26/99	
CHECKED: DATE:		SCALE: 1:40	
ACAD FILENAME: AC00685		FIRST USED ON: J-16594	
LAYERS USED: 1,2		DRAWING NO. D-35241	
		REV A	



SECTION D-D  
SCALE 1:10

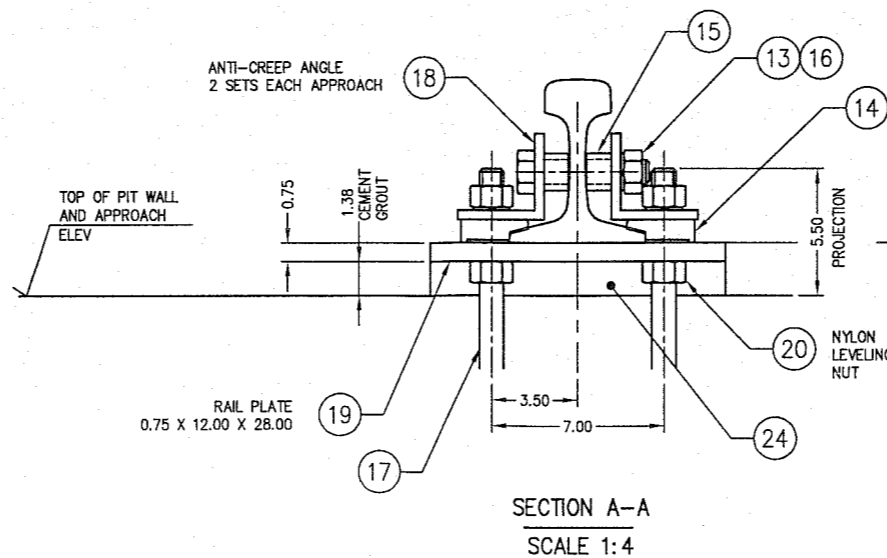


APPROACH SECTION E-E  
SCALE 1:20

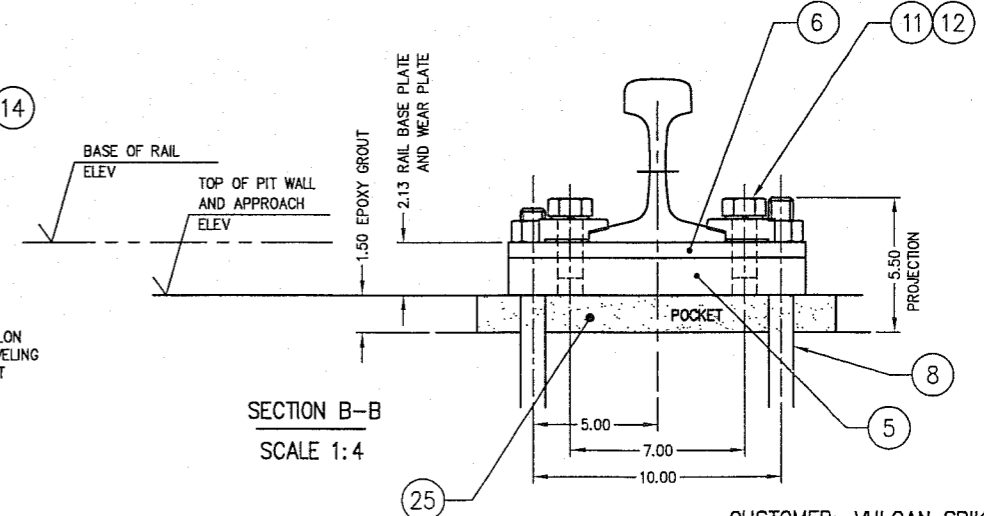


SCALE SECTION C-C  
SCALE 1:20

**FOR QUOTATION ONLY  
NOT FOR MANUFACTURE**



SECTION A-A  
SCALE 1:4



SECTION B-B  
SCALE 1:4

CUSTOMER: VULCAN SPIKE CO.  
LIPCOMB, AL.  
A.R.E.A. 115 LB RAIL

ITEM NO	DESCRIPTION	QTY	MATERIAL	UNIT WT	PART NO	SIZE	WT
1	END COPING	2	ASTM A36		B-35098		
2	SIDE COPING, 12.5 FT	2	ASTM A36		A-35099		
3							
4	LOAD CELL BASE PL (END)	2,2	ASTM A36		B-35097-1(LH), -2(RH)	1.50 X 19.00 X 24.00	
5	RAIL BASE PLATE 115 LB	4	ASTM A36		B-35103	1.50 X 12.00 X 30.00	
6	WEAR PLATE 115 LB	4	ASTM A36		B-35102	0.63 X 12.00 X 30.00	
7							
8	L-ANCHOR BOLT (W/NUT)	44	CS/ZN			1.00 X 18.00 5.00 THREAD	
9	LEVELING SCREW, HEX HD	32	CS		0.500-13 UNC X 4.00	FULL THREAD	
10	RAIL CLIP	24	CS		No 62	ROMAR	
11	HEX HEAD SCREW	24	CS/ZINC		1.00-8 UNC X 2.50	A-325	
12	LOCKWASHER	24	CS/ZINC		1.00		
13	HEX HEAD NUT	8	CS/ZINC		1.00-8 UNC	2H	
14	RAIL CLIP	192	CS		No 62	ROMAR	
15	RAIL SPACER	16	CS		A-35068	1.50 OD TUBING X 0.234 WALL	
16	HEX HEAD SCREW	8	CS/ZINC		1.00-8 UNC X 5.00	GRADE 8	
17	L-ANCHOR BOLT (W/NUT)	192	CS			1.00 X 18.00 5.00 THREAD	
18	RAIL ANTI-CREEP, APPROACH - 115 LB	8	ASTM A36		B-35067	L 0.38 X 3.50 X 3.50 X 28.00	
19	APPROACH RAIL BASE - 115 LB	48	ASTM A36		B-35066	0.75 X 12.00 X 28.00	
20	LEVELING NUT	192	NYLON		1.00-8 UNC	94812A640 McMASTER-CARR	
21							
22							
23							
24	FIVE STAR GROUT (CEMENT)	A/R	NON-SHRINK		FIVE STAR PRODUCTS, FAIRFIELD, CT.	BY OTHERS	
25	FIVE STAR GROUT (EPOXY)	A/R	NON-SHRINK		FIVE STAR PRODUCTS, FAIRFIELD, CT.	BY OTHERS	
26	REBAR, TRANSVERSE	34			#6 - 114.00	BY OTHERS	
27	REBAR, LONGITUDINAL	88			#5 - 240.00	BY OTHERS	
28	REBAR, LONGITUDINAL	30			#6 - 280.00	BY OTHERS	
29	REBAR, LONGITUDINAL	44			#5 - 160.00	BY OTHERS	
30	REBAR, VERTICAL WALL	116			#5 - 48.00	BY OTHERS	
31	REBAR, TRANSVERSE WALL	12			#6 - 106.00	BY OTHERS	
32	REBAR, LONGITUDINAL WALL	12			#6 - 211.00	BY OTHERS	
33	REBAR, FORMED	16			#6 18 12	BY OTHERS	
34	REBAR, TRANSVERSE	200			#5 - 114.00	BY OTHERS	
35	REBAR, FORMED	22			#6 12 48 12	BY OTHERS	
36	REBAR, FORMED	66			#6 12 12	BY OTHERS	
37	REBAR, FORMED	22			#6 24 24	BY OTHERS	

• SUPPLIED OPTIONALLY

GENERAL NOTES:

- ALL CONSTRUCTION AND FOUNDATION MATERIALS MUST BE IN ACCORDANCE WITH A.A.R. SCALE HANDBOOK 1997 EDITION.
- THE FOUNDATION DESIGN IS BASED ON A SOIL BEARING CAPACITY OF AT LEAST 4,000 LB PER SQ FT.
- A SOIL ANALYSIS OF THE INSTALLATION MUST BE COMPLETED TO DETERMINE THE ACTUAL SOIL BEARING CAPACITY. IF SOIL DOES NOT HAVE BEARING CAPACITY OF AT LEAST 4,000 LB PER SQ FT, AND ITS BEARING CAPACITY CANNOT BE INCREASED BY DRAINAGE, STABILIZATION, OR OTHER MEANS, PILE FOUNDATION SHALL BE PROVIDED.
- CONCRETE SPECIFICATION:  
COMPRESSIVE STRENGTH OF 4,000 PSI AT 28 DAYS. MAXIMUM SIZE AGGREGATE TO BE 3/4 STONE.  
AIR ENTRAINMENT AND PLACED IN ACCORDANCE WITH ACI STD. 318-89.
- REBAR:  
5.1 MINIMUM BAR OVERLAP OF 48 INCHES  
5.2 EMBEDMENT: 3 INCHES AGAINST EARTH  
2 INCHES AGAINST EXPOSED SURFACES OR FORMS.  
5.3 DEFORMED BILLET STEEL CONFORMING TO ASTM SPECIFICATION A-615, GRADE 60.
- GROUT:  
6.1 ALL BASE PLATES PLACED ON NON-SHRINK EPOXY GROUT.

**FOR REFERENCE ONLY  
Not for Construction**

REV	DESCRIPTION	DATE	BY
A	REVISED	11/1/99	CBM

THIS DRAWING IS THE PROPERTY EMERY WINSLOW SCALE COMPANY SEYMOUR, CONNECTICUT. THE INFORMATION CONTAINED HEREIN IS CONFIDENTIAL AND IS NOT TO BE USED OR DISSEMINATED TO OTHERS WITHOUT THE EXPRESS WRITTEN CONSENT OF EMERY WINSLOW SCALE COMPANY.

DRAWN: JDS DATE: 10/26/99  
CHECKED: DATE:  
ACAD FILENAME: ACO0685  
LAYERS USED: 2,3

ALL SHARP CORNERS AND EDGES TO BE BROKEN  
DIMENSIONS ARE IN INCHES.  
TOLERANCES UNLESS SPECIFIED OTHERWISE:  
MACHINING .XX = ± .010  
STRUCTURAL .XXX = ± .005

EMERY WINSLOW SCALE COMPANY  
SEYMOUR, CT U.S.A TERRE HAUTE, IN.

SINGLE-MODULE RAILROAD TRACK SCALE  
MODEL 62-85-12.5  
SHALLOW PIT FOUNDATION SECTION

SCALE FIRST USED ON DRAWING NO. REV  
AS NOTED J-16594 D-35241 SH 2 OF 2 A