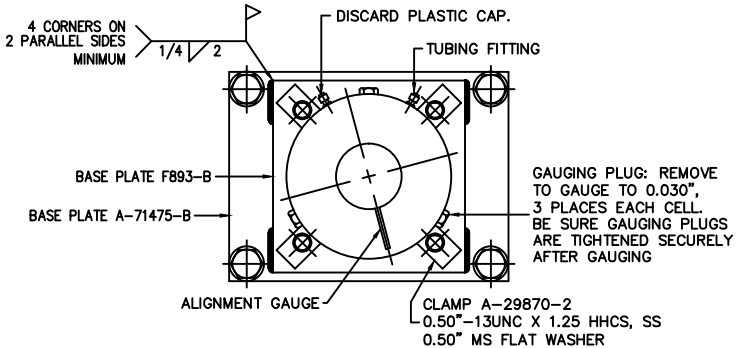
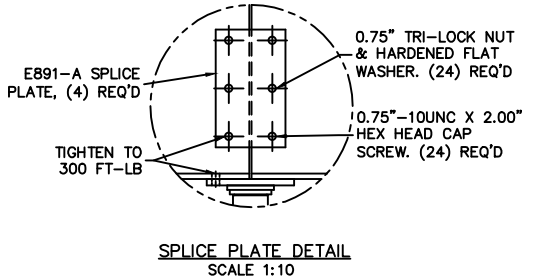
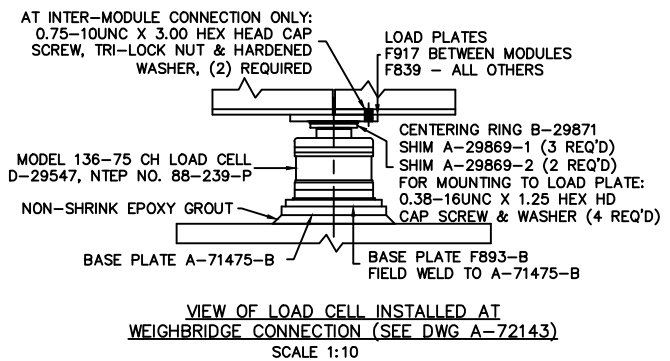


SECTION B-B
ROTATED 90°; SCALE 1:20



TYPICAL TOP VIEW OF CELL ON BASE PLATE (VIEW ROTATED 90°)
FIELD WELD BASE PLATE TO LOWER PLATE AFTER
LOADCELL IS PROPERLY CENTERED WITH CENTERING RING
SCALE 1:5



PRELIMINARY NOT FOR
CONSTRUCTION. FOR
ILLUSTRATION ONLY.

- NOTES:**
- REFERENCE INFORMATION:
FOUNDATION PLAN D-71692-C
PIPING DIAGRAM (4 SECTION) B-33069-G
DECK REINFORCING DETAIL A5928 Line 23
DECK CHANNEL INSTALLATION D-93028-G
APPROACH D342-1
LOAD CELL INSTALLATION INSTR. A-72143
NTEP NUMBER 92-086PA2
CLC 80,000
LOADING AT EACH LOAD CELL 50,000 LB
 - CRANE CAPACITY & INSTALLATION NOTES:
THE MINIMUM CAPACITY IS 3600 LB, LARGEST PIECE APPROXIMATELY 24' X 8' X 2'
SET TWO END BRIDGES FIRST, FOLLOWED BY THE CENTER BRIDGE SUCH THAT THE CENTER BRIDGE IS CONNECTED TO THE END BRIDGES BY THE FOUR (4) LOAD PLATES WITH CENTERING RINGS ET AL. ALIGN BRIDGES AND INSTALL SPLICE PLATES.
LIFT BRIDGES MADE FOR CONCRETE DECKS BY (4) LOOPS ON THE MAIN BEAMS.
LIFT BRIDGES MADE FOR STEEL DECKS BY THE STRINGERS.
INSTALL BRIDGE(S) BEFORE INSTALLING THE DECK.
 - FOR COMMERCIAL SCALES CHECK WITH LOCAL WEIGHTS AND MEASURES OFFICIALS BEFORE STARTING CONSTRUCTION. NATIONAL BUREAU OF STANDARDS HANDBOOK 44 REQUIRES:
A.) A STRAIGHT APPROACH OF AT LEAST ONE-HALF THE LENGTH OF THE PLATFORM.
B.) NOT LESS THAN 10 FEET OF APPROACH ADJACENT TO THE PLATFORM TO BE CONSTRUCTED OF CONCRETE OR SIMILAR DURABLE MATERIAL AND BE LEVEL AND IN THE SAME PLANE AS THE PLATFORM.
FOR NON COMMERCIAL SCALES PROVIDE AN APPROACH OF 2 FEET MINIMUM LENGTH WHICH IS LEVEL AND IN THE SAME PLANE AS THE PLATFORM.
 - CHECK WITH THE PROPER REGULATORY AUTHORITIES AS TO ANY SPECIAL STATE OR OTHER REGULATORY REQUIREMENTS REGARDING PIT DEPTHS. PIT CONSTRUCTION AND APPROACH DIMENSIONS WHICH MIGHT AFFECT INSTALLATION ARE SHOWN. EMERY WINSLOW WILL ASSUME NO RESPONSIBILITY FOR CHANGES NECESSITATED BY ANY STATE OR ANY OTHER REGULATORY REQUIREMENTS AS TO INSTALLATION OF OUR SCALES.

REV	DESCRIPTION	DATE	BY	CHECKED	DATE
D	REV'S UPDATED	09/13	CEM		
C	BASE PLATE WAS F918, DETAILS & REV.'S UPDATED	05/08	CEM		
B	REVISIONS UPDATED	10/06	CEM		
A	DETAILS ADDED & UPDATED	06/05	CEM		
LTR	REVISION	DATE	BY	DATE	

THIS DRAWING IS THE PROPERTY OF EMERY WINSLOW SCALE COMPANY SEYMOUR, CONNECTICUT. THE INFORMATION CONTAINED HEREIN IS CONFIDENTIAL AND IS NOT TO BE USED OR DISSEMINATED TO OTHERS WITHOUT THE EXPRESS WRITTEN CONSENT OF EMERY WINSLOW SCALE COMPANY.

ALL SHARP CORNERS AND EDGES TO BE BROKEN	EMERY WINSLOW SCALE COMPANY SEYMOUR, CT U.S.A. TERRE HAUTE, IN.
UNLESS OTHERWISE SPECIFIED DIMENSIONS ARE IN INCHES	MODEL H44-10070-11CD 6" CD, 70' X 11' OUTLINE w/4' PIT
MACHINING FABRICATION ±.005 ±.005 ±.03	SCALE FIRST USED ON DRAWING NO. REV. 1:30 D-71691 D