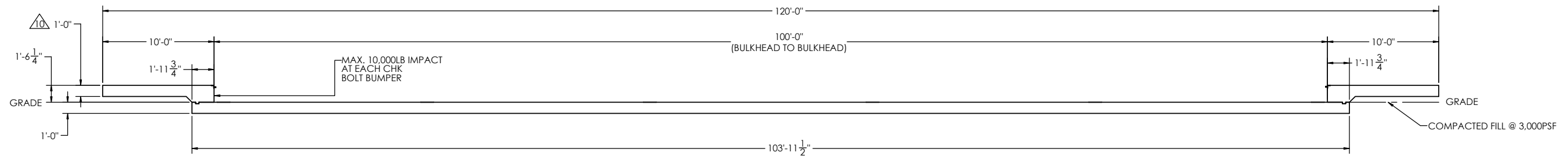
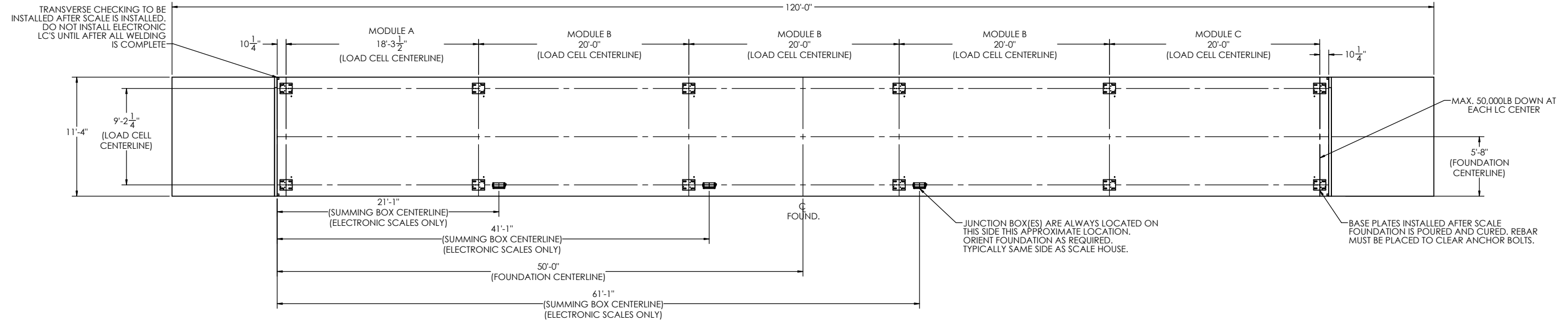


# DETAILS

REVISION		INIT	DATE
REV.	ECO	DESCRIPTION	
A		ENGINEERING RELEASE	SPJ 03/08/2021



FOR NON COMMERCIAL SCALES PROVIDE AN APPROACH OF 2 FEET MINIMUM LENGTH WHICH IS LEVEL AND IN THE SAME PLANE AS THE PLATFORM.

FOR COMMERCIAL SCALES CHECK WITH LOCAL WEIGHTS AND MEASURES OFFICIALS BEFORE STARTING CONSTRUCTIONS. NATIONAL INSTITUTE OF STANDARDS AND TECHNOLOGY (NIST) HANDBOOK H44 REQUIRES:  
 A) A STRAIGHT APPROACH OF AT LEAST ONE-HALF THE LENGTH OF THE PLATFORM.  
 B) NOT LESS THAN 10 FEET OF APPROACH ADJACENT TO THE PLATFORM TO BE CONSTRUCTED OF CONCRETE OR SIMILAR DURABLE MATERIAL AND TO BE LEVEL AND IN THE SAME PLANE AS THE PLATFORM.

NOTES:  
 1. CONCRETE STRENGTH: f'c = 4000 PSI @ 28 DAYS  
 REINFORCING ROD: Fy = 60,000 PSI, ASTM A615 GRADE 60  
 ALL CONCRETE WORK TO BE DONE PER CRSI CODE  
 ALL FOUNDATION MATERIAL AND LABOR BY OTHERS ALWAYS WORK FROM CERTIFIED DRAWINGS

2. PIERS AS SHOWN ARE SIZED FOR 3,000 LB/SQ.FT. THE END USER SHALL BE RESPONSIBLE FOR DETERMINING WHETHER OR NOT SOIL CHARACTERISTICS MEET THE REQUIREMENT.

3. THE CONCRETE AND REBAR SPECIFICATIONS SHOWN ARE FOR A NATIONWIDE RANGE OF CONDITIONS AND MAY NEED MODIFICATION FOR LOCAL CONDITIONS. EMERY WINSLOW SCALE WILL NOT BE RESPONSIBLE FOR ANY CHANGES NECESSITATED BY ANY REGULATORY AUTHORITIES OR LOCAL SITE CONDITIONS.

4. APPROACH COPING (BULKHEAD) TO BE ON A COMMON PLANE WITHIN 1/4".

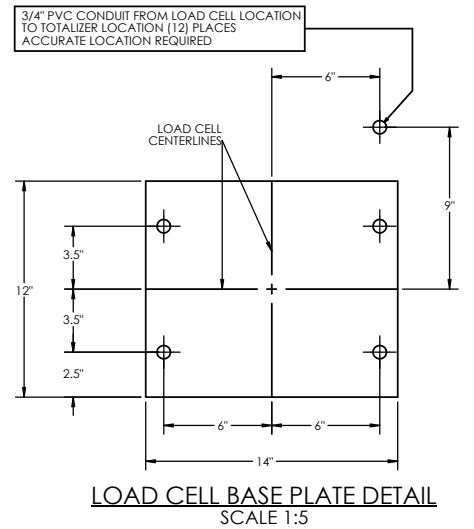
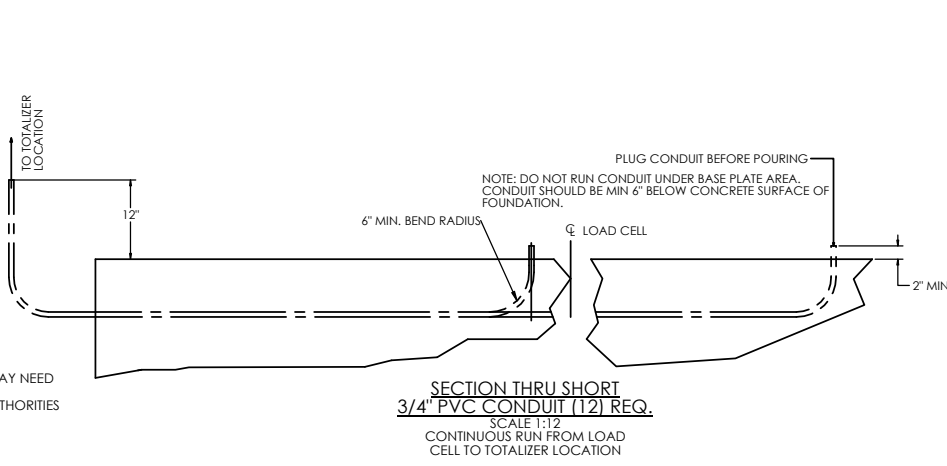
5. TOP OF REBAR MUST BE PLACED TO CLEAR ANCHOR BOLTS. ANCHOR BOLTS ARE TO BE INSTALLED AFTER FOUNDATION HAS CURED.

6. PIERS MUST BE INSTALLED WITH EXTREME CARE AND MUST NOT BE ALLOWED TO SHIFT.

7. THESE PLANS ARE NOT SUITABLE WHERE SOIL MIGRATION IN AN ISSUE. SOIL MUST BE STABLE AND NOT SUBJECT TO FLOODING OR OTHER POSSIBLE CAUSES OF SOIL MIGRATION THAT MAY RESULT IN SHIFTING OF THE PIERS.

8. BASE PLATES ARE NOT GROUDED. IF GROUTING IS REQUIRED ADD GROUT THICKNESS TO APPROACH DEPTH SHOWN.

9. THERE ARE (2) ANCHOR BOLTS PER BASE PLATE. THEY SHOULD BE PLACED DIAGONALLY FROM EACH OTHER.  
 APPROACH THICKNESS MAY BE 10" MINIMUM WHERE ALLOWED BY STATE REGULATIONS

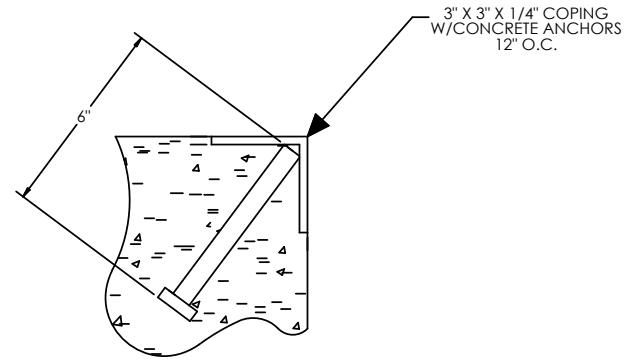


**PRELIMINARY NOT FOR CONSTRUCTION FOR ILLUSTRATION ONLY**

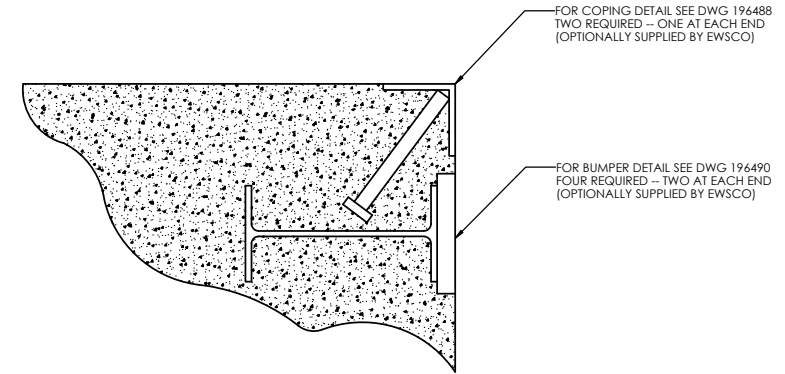
ALL SHARP CORNERS AND EDGES TO BE BROKEN		EMERY WINSLOW SCALE COMPANY SEYMOUR, CT. U.S.A. TERRE HAUTE, IN.	
UNLESS OTHERWISE SPECIFIED DIMENSIONS ARE IN INCHES		FOUNDATION, CONCRETE SLAB 100' X 11', STEEL DECK	
LTR	DATE	BY	SCALE 1:60
DRAWN: S. JOHNSON DATE: 05/27/2021		DRAWING NO. 205654	
CHECKED: DATE:		REV. A	
ACAD FILENAME:		FIRST USED ON	
LAYERS USED:		DRAWING NO. 205654	
THIS DRAWING IS THE PROPERTY OF EMERY WINSLOW SCALE COMPANY SEYMOUR, CONNECTICUT. THE INFORMATION CONTAINED HEREIN IS CONFIDENTIAL AND IS NOT TO BE USED OR DISSEMINATED TO OTHERS WITHOUT THE EXPRESS WRITTEN CONSENT OF EMERY WINSLOW SCALE COMPANY.		REV. A	

# CONCRETE LAYOUT

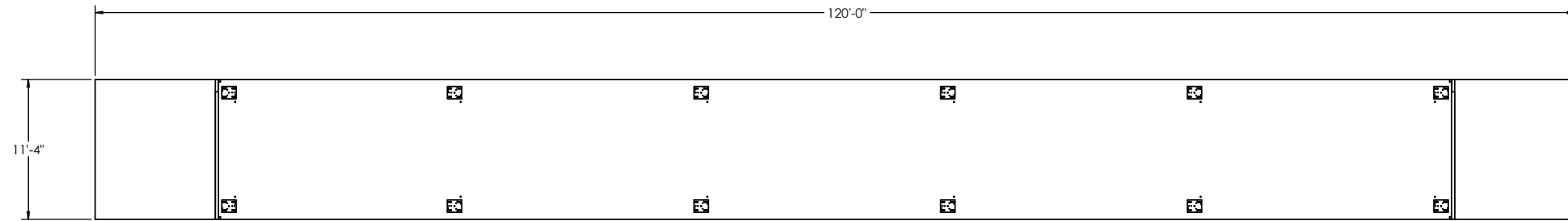
CONCRETE SCHEDULE			
		VOLUME (CUBIC YARDS)	
APPROACHES		9.4	
FLOOR		43.8	
TOTAL		53.3	
MISC. STEEL			
PIT COPING	3 X 3 X 1/4	23 LN. FT	113 LBS



**DETAIL C**

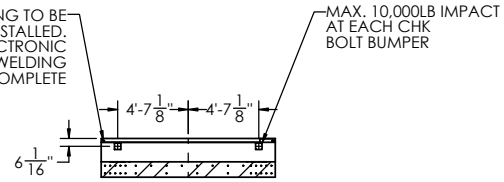


**DETAIL OF BULKHEAD INSTALLATION**  
NO SCALE

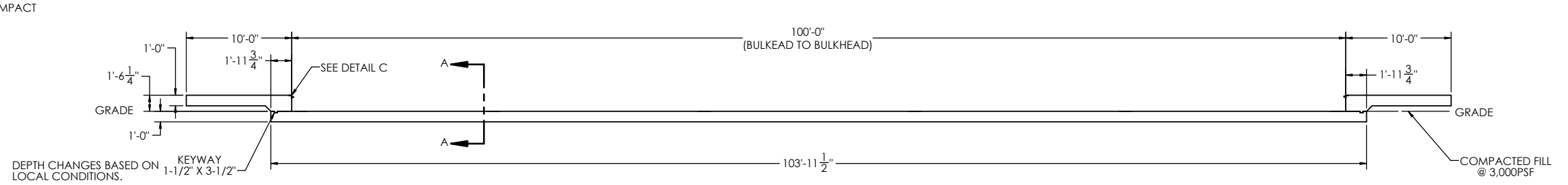


**PRELIMINARY NOT FOR  
CONSTRUCTION FOR  
ILLUSTRATION ONLY**

TRANSVERSE CHECKING TO BE INSTALLED AFTER SCALE IS INSTALLED. DO NOT INSTALL ELECTRONIC LC'S UNTIL AFTER ALL WELDING IS COMPLETE



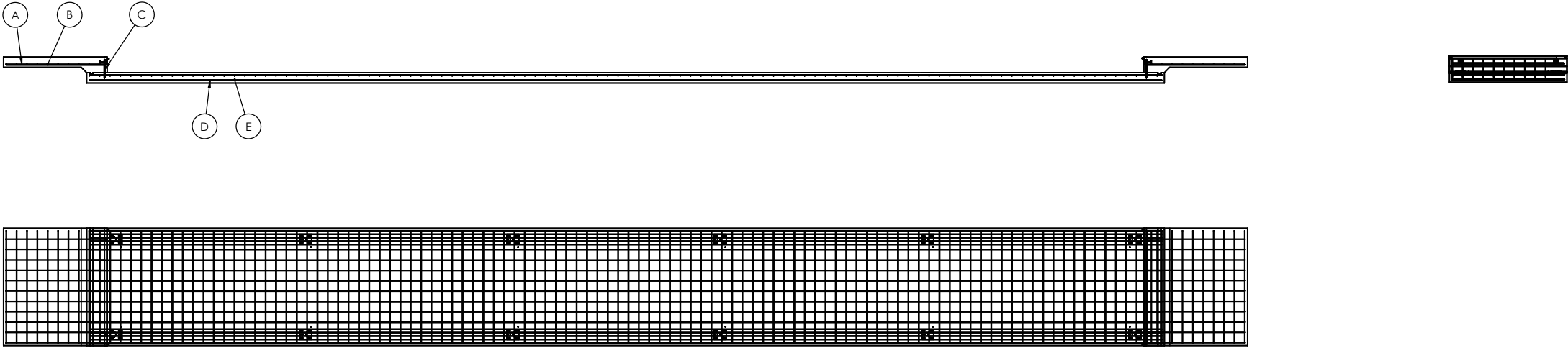
**SECTION A-A**



LTR		DATE	BY	ALL SHARP CORNERS AND EDGES TO BE BROKEN	EMERY WINSLOW SCALE COMPANY SEYMOUR, CT. U.S.A. TERRE HAUTE, IN.
UNLESS OTHERWISE SPECIFIED DIMENSIONS ARE IN INCHES				MACHINING .XX: ±.01 .XXX: ±.005	
THIS DRAWING IS THE PROPERTY OF EMERY WINSLOW SCALE COMPANY SEYMOUR, CONNECTICUT. THE INFORMATION CONTAINED HEREIN IS CONFIDENTIAL AND IS NOT TO BE USED OR DISSEMINATED TO OTHERS WITHOUT THE EXPRESS WRITTEN CONSENT OF EMERY WINSLOW SCALE COMPANY.		DRAWN: S. JOHNSON DATE: 05/27/2021		FOUNDATION, CONCRETE SLAB 100' X 11', STEEL DECK	
CHECKED: DATE:		ACAD FILENAME:		SCALE 1:75	FIRST USED ON
LAYERS USED:				DRAWING NO. 205654	REV. A

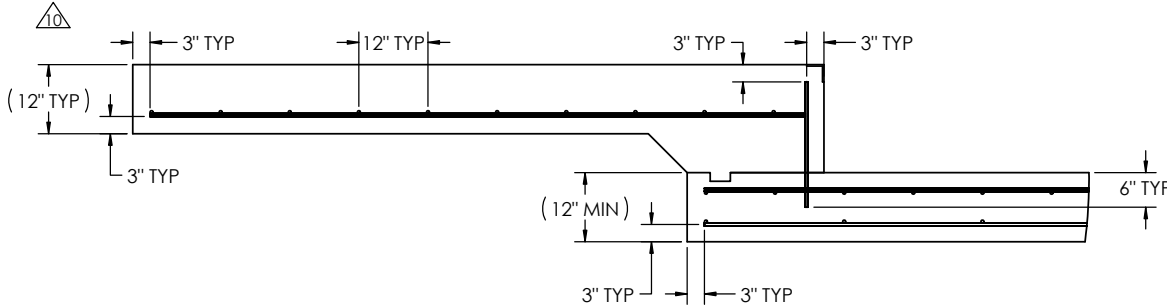
# REBAR LAYOUT

MATERIAL REQUIREMENTS				
REBAR SCHEDULE				
BAL. NO.	QUANTITY	LENGTH (FT.-IN.)	DESCRIPTION	WEIGHT
A	22	9' 6"	# 4 @ 12 O.C.	140
B	20	10' 10"	# 4 @ 12 O.C.	145
C	22	1' 9 1/4"	# 4 @ 12 O.C.	26
D	32	103' 5 1/2"	# 4 AS SHOWN	2212
E	156	10' 10"	# 4 AS SHOWN	1129
TOTAL WEIGHT OF REBAR (LBS.)				3651
TOTAL LENGTH OF REBAR (FT.)				5465

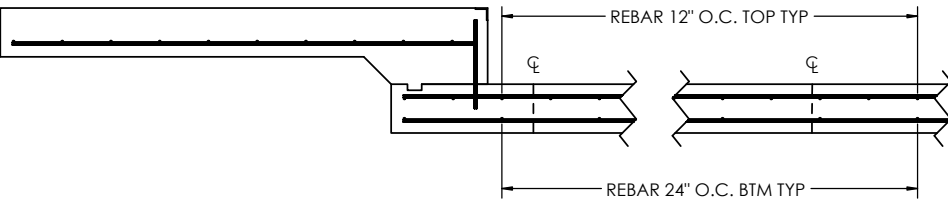


### APPROACH STANDARD VIEW

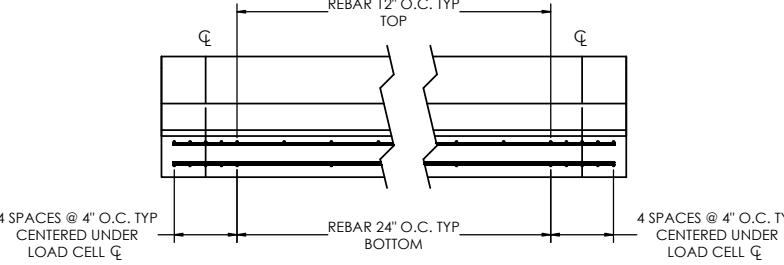
**NOTES:** 1) LEFT AND RIGHT APPROACHES ARE MIRROR IMAGES OF EACH OTHER AND CONTAIN AN IDENTICAL PART LIST



### REBAR SPACING LENGTH



### REBAR SPACING WIDTH



**PRELIMINARY NOT FOR CONSTRUCTION FOR ILLUSTRATION ONLY**

LTR		DATE	BY	ALL SHARP CORNERS AND EDGES TO BE BROKEN	EMERY WINSLOW SCALE COMPANY SEYMOUR, CT. U.S.A. TERRE HAUTE, IN.
THIS DRAWING IS THE PROPERTY OF EMERY WINSLOW SCALE COMPANY SEYMOUR, CONNECTICUT. THE INFORMATION CONTAINED HEREIN IS <b>CONFIDENTIAL</b> AND IS NOT TO BE USED OR DISSEMINATED TO OTHERS WITHOUT THE EXPRESS WRITTEN CONSENT OF EMERY WINSLOW SCALE COMPANY.		CHECKED:	DATE:	UNLESS OTHERWISE SPECIFIED DIMENSIONS ARE IN INCHES MACHINING FABRICATION .XX: ±.01 .XXX: ±.005	FOUNDATION, CONCRETE SLAB 100' X 11', STEEL DECK
		DRAWN: S. JOHNSON	DATE: 05/27/2021	SCALE: 1:80	
				FIRST USED ON	DRAWING NO. <b>205654</b>
				LAYERS USED:	REV. <b>A</b>