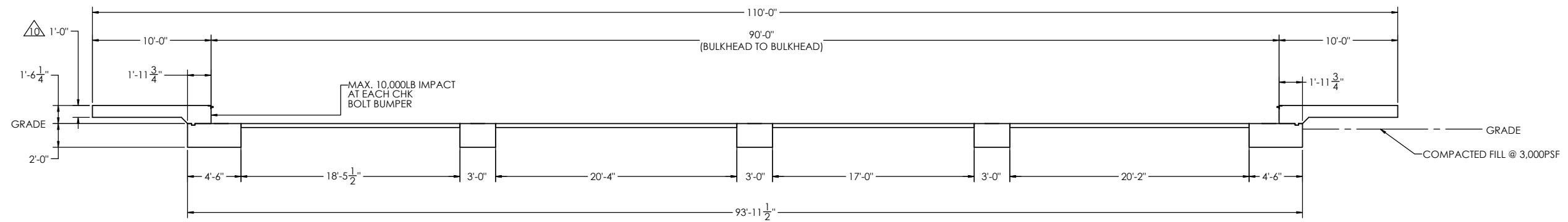
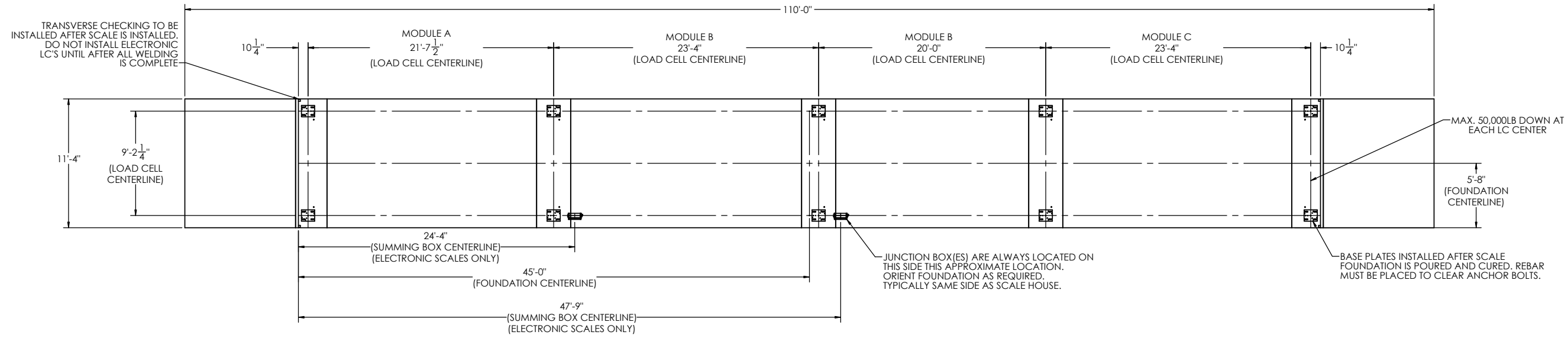


DETAILS

REVISION		INIT	DATE
REV.	ECO		
A		SPJ	03/09/2021



FOR NON COMMERCIAL SCALES PROVIDE AN APPROACH OF 2 FEET MINIMUM LENGTH WHICH IS LEVEL AND IN THE SAME PLANE AS THE PLATFORM.

FOR COMMERCIAL SCALES CHECK WITH LOCAL WEIGHTS AND MEASURES OFFICIALS BEFORE STARTING CONSTRUCTIONS. NATIONAL INSTITUTE OF STANDARDS AND TECHNOLOGY (NIST) HANDBOOK H44 REQUIRES:
 A) A STRAIGHT APPROACH OF AT LEAST ONE-HALF THE LENGTH OF THE PLATFORM.
 B) NOT LESS THAN 10 FEET OF APPROACH ADJACENT TO THE PLATFORM TO BE CONSTRUCTED OF CONCRETE OR SIMILAR DURABLE MATERIAL AND TO BE LEVEL AND IN THE SAME PLANE AS THE PLATFORM.

NOTES:
 1. CONCRETE STRENGTH: f'c = 4000 PSI @ 28 DAYS
 REINFORCING ROD: Fy = 60,000 PSI, ASTM A615 GRADE 60
 ALL CONCRETE WORK TO BE DONE PER CRSI CODE
 ALL FOUNDATION MATERIAL AND LABOR BY OTHERS ALWAYS WORK FROM CERTIFIED DRAWINGS

2. PIERS AS SHOWN ARE SIZED FOR 3,000 LB/SQ.FT. THE END USER SHALL BE RESPONSIBLE FOR DETERMINING WHETHER OR NOT SOIL CHARACTERISTICS MEET THE REQUIREMENT.

3. THE CONCRETE AND REBAR SPECIFICATIONS SHOWN ARE FOR A NATIONWIDE RANGE OF CONDITIONS AND MAY NEED MODIFICATION FOR LOCAL CONDITIONS. EMERY WINSLOW SCALE WILL NOT BE RESPONSIBLE FOR ANY CHANGES NECESSITATED BY ANY REGULATORY AUTHORITIES OR LOCAL SITE CONDITIONS.

4. APPROACH COPING (BULKHEAD) TO BE ON A COMMON PLANE WITHIN 1/4".

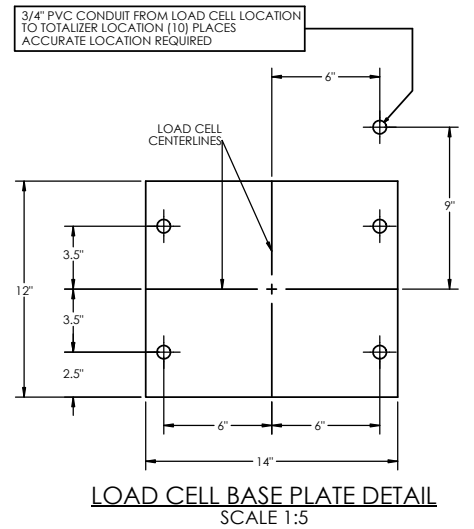
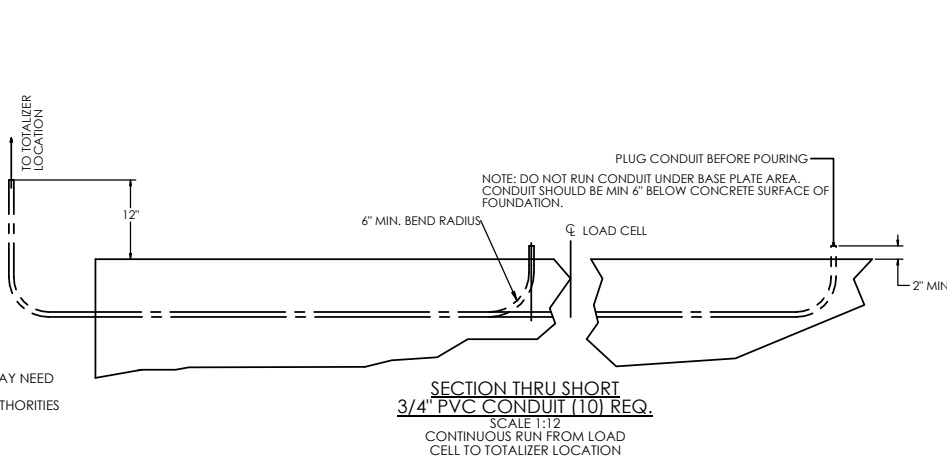
5. TOP OF REBAR MUST BE PLACED TO CLEAR ANCHOR BOLTS. ANCHOR BOLTS ARE TO BE INSTALLED AFTER FOUNDATION HAS CURED.

6. PIERS MUST BE INSTALLED WITH EXTREME CARE AND MUST NOT BE ALLOWED TO SHIFT.

7. THESE PLANS ARE NOT SUITABLE WHERE SOIL MIGRATION IN AN ISSUE. SOIL MUST BE STABLE AND NOT SUBJECT TO FLOODING OR OTHER POSSIBLE CAUSES OF SOIL MIGRATION THAT MAY RESULT IN SHIFTING OF THE PIERS.

8. BASE PLATES ARE NOT GROUTED. IF GROUTING IS REQUIRED ADD GROUT THICKNESS TO APPROACH DEPTH SHOWN.

9. THERE ARE (2) ANCHOR BOLTS PER BASE PLATE. THEY SHOULD BE PLACED DIAGONALLY FROM EACH OTHER.
 APPROACH THICKNESS MAY BE 10" MINIMUM WHERE ALLOWED BY STATE REGULATIONS

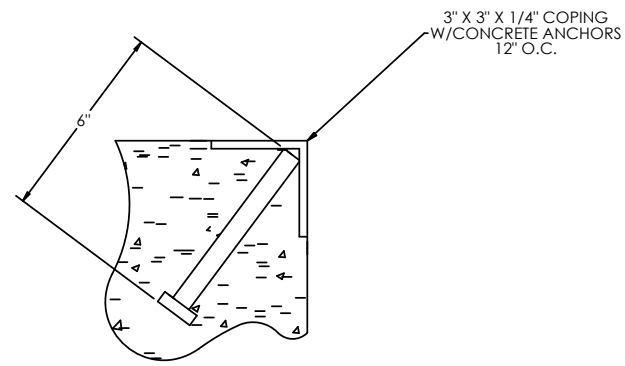


PRELIMINARY NOT FOR CONSTRUCTION FOR ILLUSTRATION ONLY

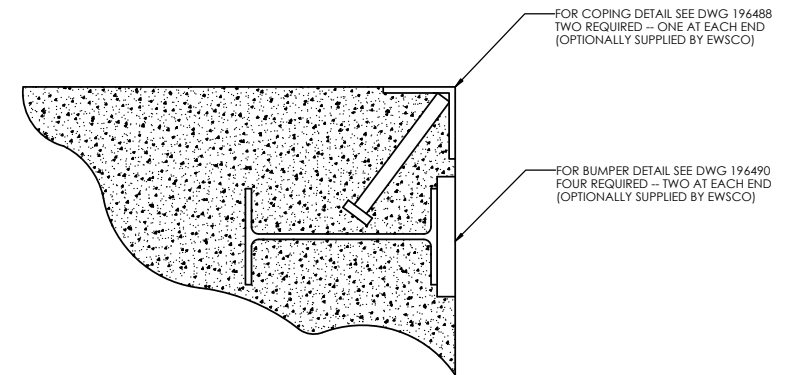
ALL SHARP CORNERS AND EDGES TO BE BROKEN		EMERY WINSLOW SCALE COMPANY	
UNLESS OTHERWISE SPECIFIED DIMENSIONS ARE IN INCHES		SEYMOUR, CT. U.S.A. TERRE HAUTE, IN.	
MACHINING .XX: ±.01 .XXX: ±.005		FOUNDATION, CONCRETE PIER 90' X 11' STEEL DECK	
LTR	DATE	BY	SCALE 1:60
THIS DRAWING IS THE PROPERTY OF EMERY WINSLOW SCALE COMPANY SEYMOUR, CONNECTICUT. THE INFORMATION CONTAINED HEREIN IS CONFIDENTIAL AND IS NOT TO BE USED OR DISSEMINATED TO OTHERS WITHOUT THE EXPRESS WRITTEN CONSENT OF EMERY WINSLOW SCALE COMPANY.		DRAWN: S. JOHNSON DATE: 05/27/2021	FIRST USED ON
		CHECKED: DATE:	DRAWING NO. 205679
		ACAD FILENAME:	REV. A
		LAYERS USED:	

CONCRETE LAYOUT

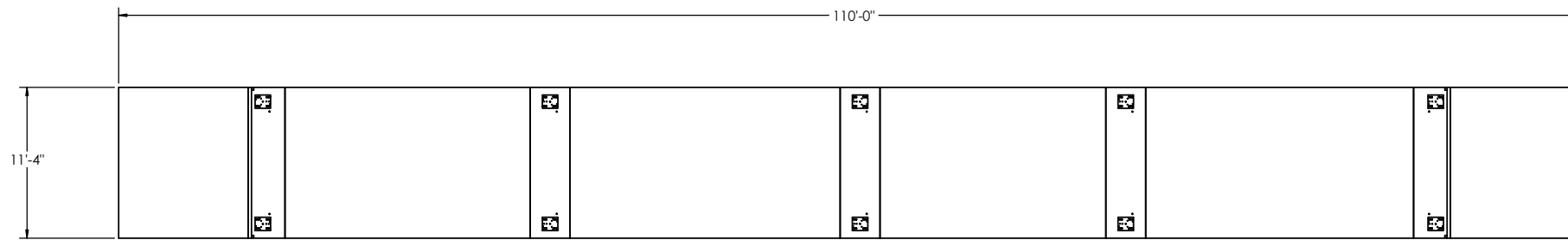
CONCRETE SCHEDULE		VOLUME (CUBIC YARDS)	
APPROACHES		9.4	
CLEANOUT		10.7	
PIERS		15.1	
TOTAL		75.2	
MISC. STEEL			
PIT COPING	3 X 3 X 1/4	23 LN .FT	113 LBS



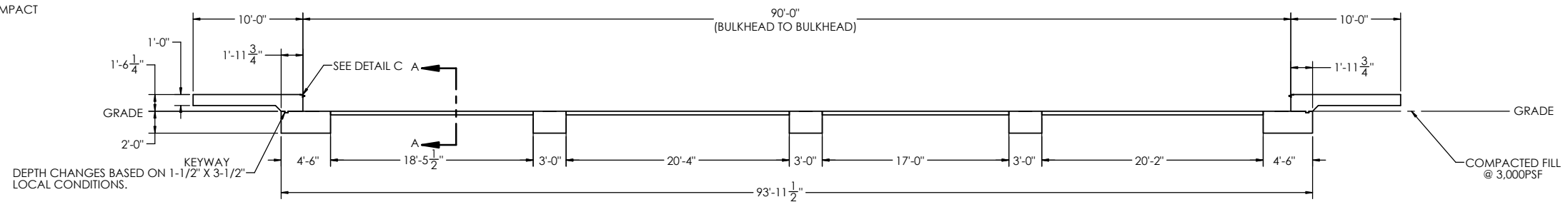
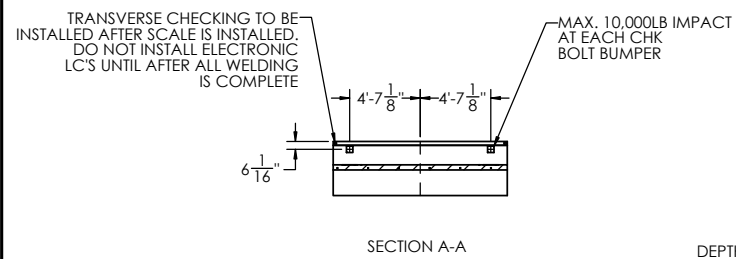
DETAIL C



DETAIL OF BULKHEAD INSTALLATION
NO SCALE



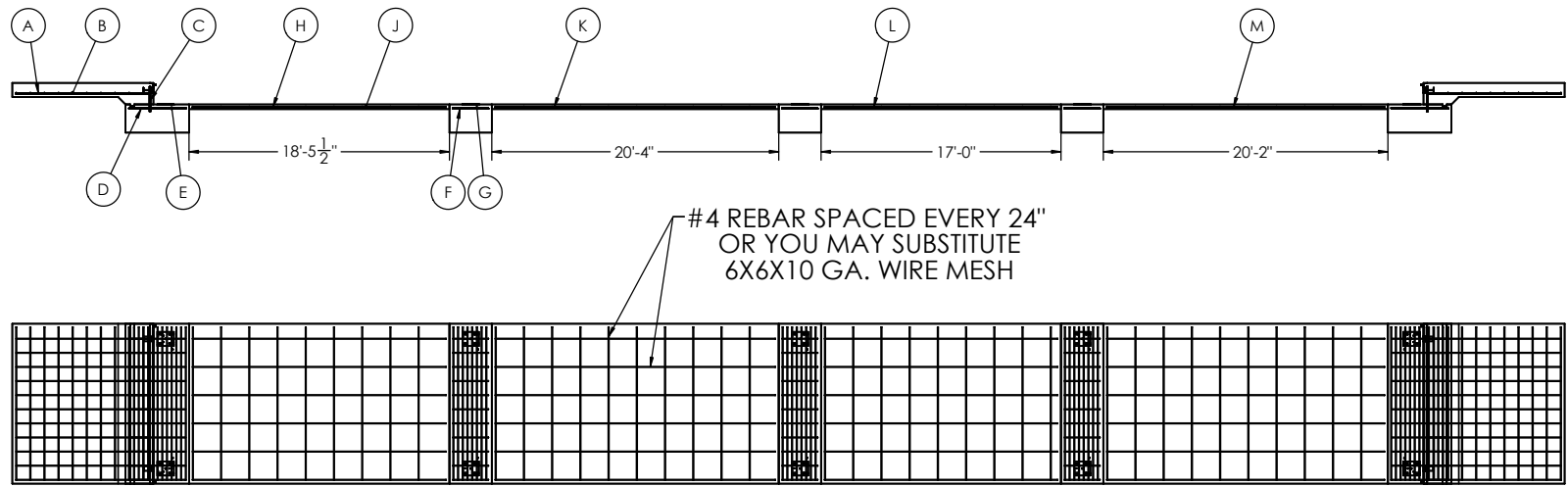
**PRELIMINARY NOT FOR
CONSTRUCTION FOR
ILLUSTRATION ONLY**



LTR		DATE	BY	ALL SHARP CORNERS AND EDGES TO BE BROKEN	EMERY WINSLOW SCALE COMPANY SEYMOUR, CT. U.S.A. TERRE HAUTE, IN.
THIS DRAWING IS THE PROPERTY OF EMERY WINSLOW SCALE COMPANY SEYMOUR, CONNECTICUT. THE INFORMATION CONTAINED HEREIN IS CONFIDENTIAL AND IS NOT TO BE USED OR DISSEMINATED TO OTHERS WITHOUT THE EXPRESS WRITTEN CONSENT OF EMERY WINSLOW SCALE COMPANY.		DATE	BY	UNLESS OTHERWISE SPECIFIED DIMENSIONS ARE IN INCHES MACHINING FABRICATION .XX: ±.01 .XXX: ±.005	
DRAWN: S. JOHNSON DATE: 05/27/2021				FOUNDATION, CONCRETE PIER 90' X 11' STEEL DECK	
CHECKED: DATE:				SCALE	FIRST USED ON
ACAD FILENAME:				1:75	
LAYERS USED:				DRAWING NO.	REV.
				205679	A

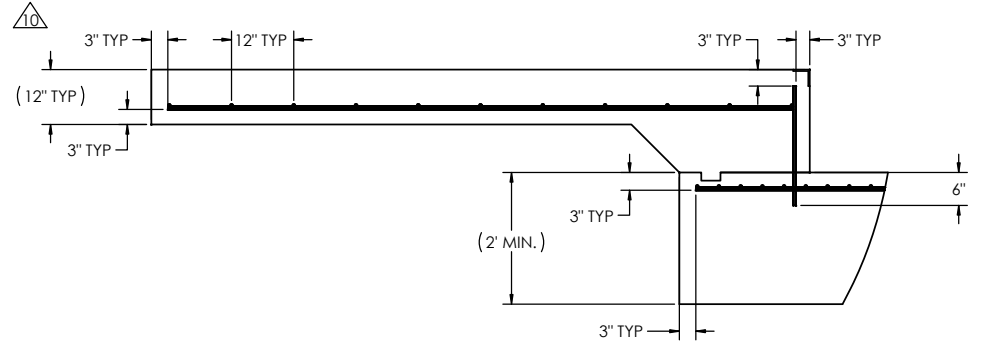
REBAR LAYOUT

MATERIAL REQUIREMENTS				
REBAR SCHEDULE				
BAL. NO.	QUANTITY	LENGTH (FT.-IN.)	DESCRIPTION	WEIGHT
A	22	9' 6"	# 4 @ 12 O.C.	140
B	20	10' 10"	# 4 @ 12 O.C.	145
C	22	1'9 1/4"	# 4 @ 12 O.C.	26
D	22	4' 0"	# 4 @ 12 O.C.	59
E	26	10' 10"	# 4 @ 4 O.C.	188
F	33	2' 6"	# 4 @ 12 O.C.	55
G	24	10' 10"	# 4 @ 4 O.C.	174
CLEANOUT SCHEDULE				
H	6	17' 11 1/2"	# 4 @ 24 O.C.	72
J	38	10' 10"	# 4 @ 24 O.C.	275
K	6	19' 10"	# 4 @ 24 O.C.	79
L	6	16' 6"	# 4 @ 24 O.C.	66
M	6	19' 8"	# 5 @ 12 O.C.	123
TOTAL WEIGHT OF REBAR (LBS.)				1402
TOTAL LENGTH OF REBAR (FT.)				2032
WIRE MESH	6 X 6-10 GA.		1091 SQ FT	

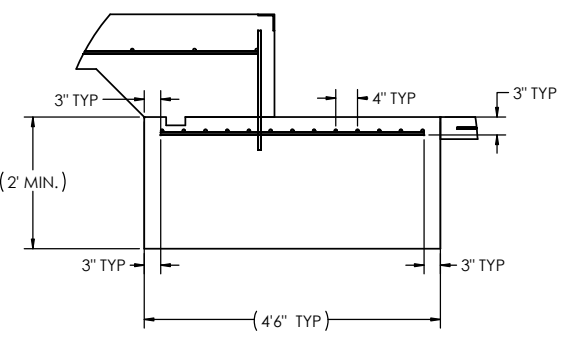


APPROACH STANDARD VIEW

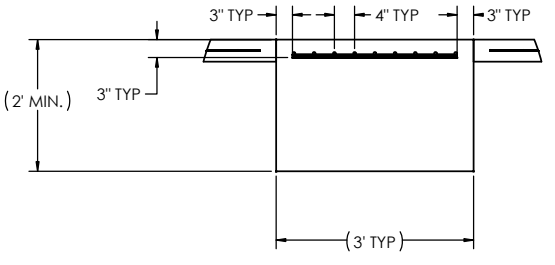
NOTES: 1) LEFT AND RIGHT APPROACHES ARE MIRROR IMAGES OF EACH OTHER AND CONTAIN AN IDENTICAL PART LIST



REBAR SPACING LENGTH



REBAR SPACING WIDTH



PRELIMINARY NOT FOR CONSTRUCTION FOR ILLUSTRATION ONLY

		ALL SHARP CORNERS AND EDGES TO BE BROKEN		EMERY WINSLOW SCALE COMPANY SEYMOUR, CT. U.S.A. TERRE HAUTE, IN.	
		UNLESS OTHERWISE SPECIFIED DIMENSIONS ARE IN INCHES			
		MACHINING FABRICATION			
		.XX: ±.01 .XX: ±.13			
		.XXX: ±.005			
LTR	DATE	BY	DRAWN: S. JOHNSON DATE: 05/27/2021	FOUNDATION, CONCRETE PIER 90' X 11'. STEEL DECK	
THIS DRAWING IS THE PROPERTY OF EMERY WINSLOW SCALE COMPANY SEYMOUR, CONNECTICUT. THE INFORMATION CONTAINED HEREIN IS CONFIDENTIAL AND IS NOT TO BE USED OR DISSEMINATED TO OTHERS WITHOUT THE EXPRESS WRITTEN CONSENT OF EMERY WINSLOW SCALE COMPANY.			CHECKED: DATE:	SCALE	FIRST USED ON
			ACAD FILENAME:	1:80	DRAWING NO.
			LAYERS USED:		205679
					REV. A