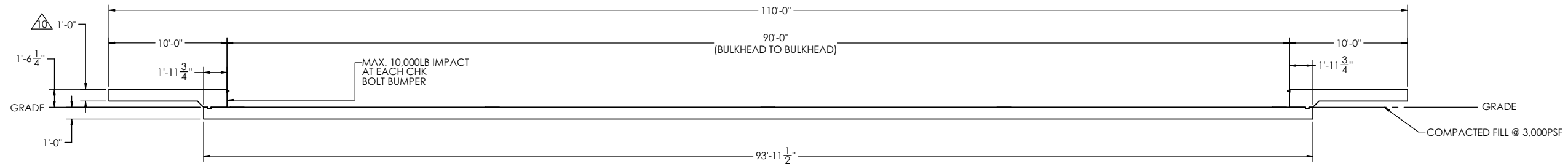
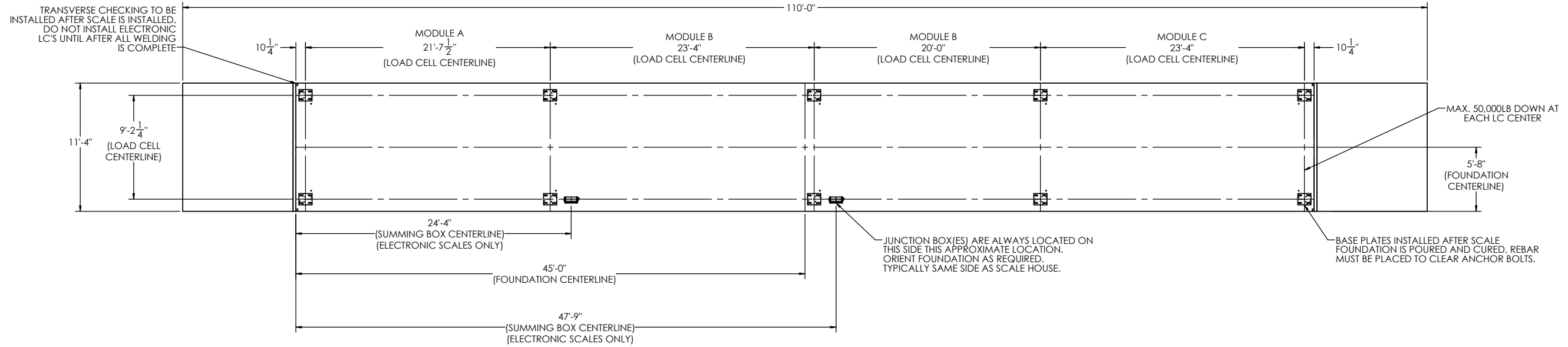


DETAILS

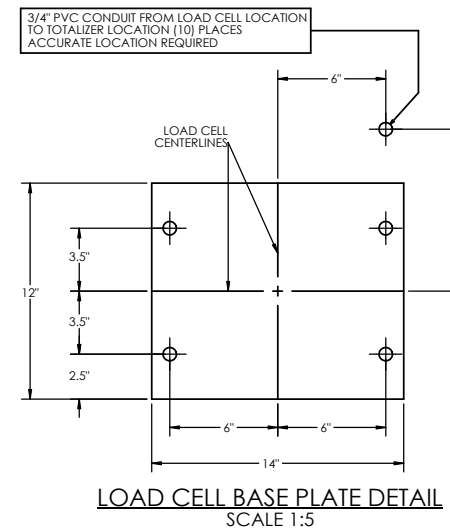
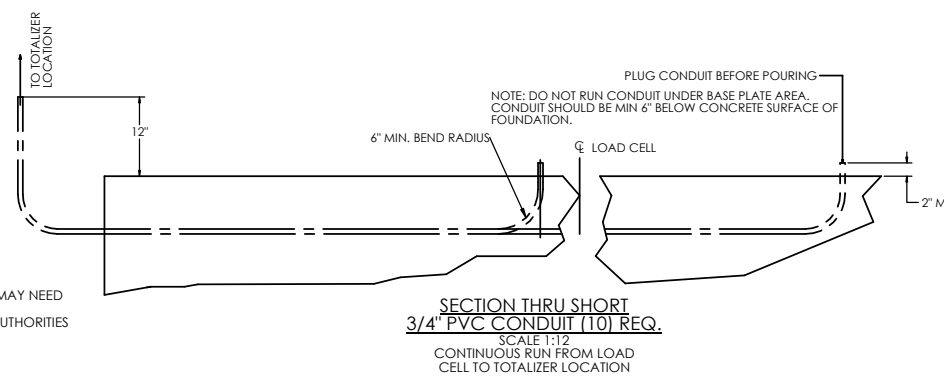
REVISION		INIT	DATE
REV.	ECO	DESCRIPTION	
A		ENGINEERING RELEASE	SPJ 03/19/2021



FOR NON COMMERCIAL SCALES PROVIDE AN APPROACH OF 2 FEET MINIMUM LENGTH WHICH IS LEVEL AND IN THE SAME PLANE AS THE PLATFORM.

FOR COMMERCIAL SCALES CHECK WITH LOCAL WEIGHTS AND MEASURES OFFICIALS BEFORE STARTING CONSTRUCTIONS. NATIONAL INSTITUTE OF STANDARDS AND TECHNOLOGY (NIST) HANDBOOK H44 REQUIRES:
 A) A STRAIGHT APPROACH OF AT LEAST ONE-HALF THE LENGTH OF THE PLATFORM.
 B) NOT LESS THAN 10 FEET OF APPROACH ADJACENT TO THE PLATFORM TO BE CONSTRUCTED OF CONCRETE OR SIMILAR DURABLE MATERIAL AND TO BE LEVEL AND IN THE SAME PLANE AS THE PLATFORM.

- NOTES:
- CONCRETE STRENGTH: $f'_c = 4000$ PSI @ 28 DAYS
 REINFORCING ROD: $F_y = 60,000$ PSI, ASTM A615 GRADE 60
 ALL CONCRETE WORK TO BE DONE PER CRSI CODE
 ALL FOUNDATION MATERIAL AND LABOR BY OTHERS ALWAYS WORK FROM CERTIFIED DRAWINGS
 - PIERS AS SHOWN ARE SIZED FOR 3,000 LB/SQ.FT. THE END USER SHALL BE RESPONSIBLE FOR DETERMINING WHETHER OR NOT SOIL CHARACTERISTICS MEET THE REQUIREMENT.
 - THE CONCRETE AND REBAR SPECIFICATIONS SHOWN ARE FOR A NATIONWIDE RANGE OF CONDITIONS AND MAY NEED MODIFICATION FOR LOCAL CONDITIONS. EMERY WINSLOW SCALE WILL NOT BE RESPONSIBLE FOR ANY CHANGES NECESSITATED BY ANY REGULATORY AUTHORITIES OR LOCAL SITE CONDITIONS.
 - APPROACH COPING (BULKHEAD) TO BE ON A COMMON PLANE WITHIN 1/4".
 - TOP OF REBAR MUST BE PLACED TO CLEAR ANCHOR BOLTS. ANCHOR BOLTS ARE TO BE INSTALLED AFTER FOUNDATION HAS CURED.
 - PIERS MUST BE INSTALLED WITH EXTREME CARE AND MUST NOT BE ALLOWED TO SHIFT.
 - THESE PLANS ARE NOT SUITABLE WHERE SOIL MIGRATION IS AN ISSUE. SOIL MUST BE STABLE AND NOT SUBJECT TO FLOODING OR OTHER POSSIBLE CAUSES OF SOIL MIGRATION THAT MAY RESULT IN SHIFTING OF THE PIERS.
 - BASE PLATES ARE NOT GROUDED. IF GROUTING IS REQUIRED ADD GROUT THICKNESS TO APPROACH DEPTH SHOWN.
 - THERE ARE (2) ANCHOR BOLTS PER BASE PLATE. THEY SHOULD BE PLACED DIAGONALLY FROM EACH OTHER.
 - APPROACH THICKNESS MAY BE 10" MINIMUM WHERE ALLOWED BY STATE REGULATIONS

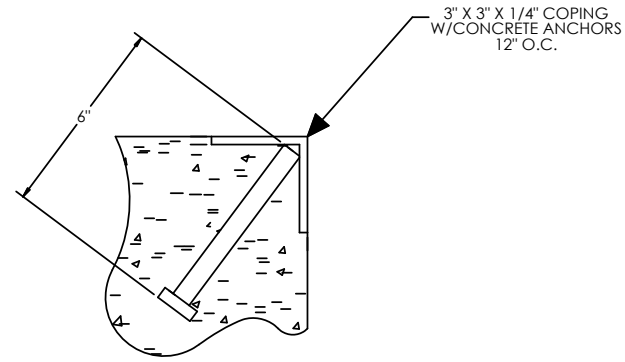


PRELIMINARY NOT FOR CONSTRUCTION FOR ILLUSTRATION ONLY

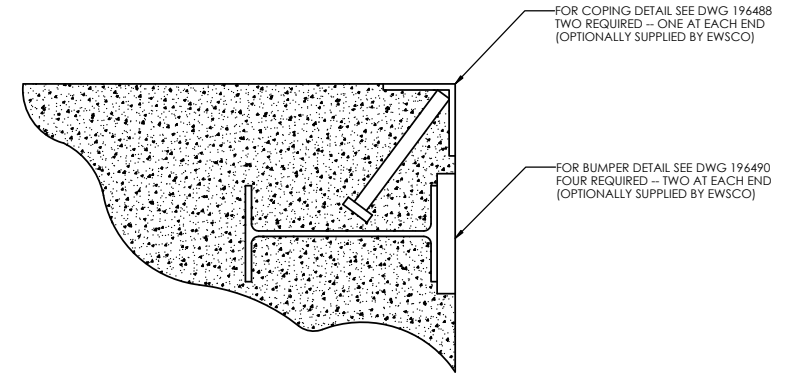
ALL SHARP CORNERS AND EDGES TO BE BROKEN		EMERY WINSLOW SCALE COMPANY SEYMOUR, CT. U.S.A. TERRE HAUTE, IN.	
UNLESS OTHERWISE SPECIFIED DIMENSIONS ARE IN INCHES		FOUNDATION, CONCRETE SLAB 90' X 11', STEEL DECK	
LTR	DATE	BY	SCALE 1:60 FIRST USED ON DRAWING NO. 205681 REV. A
THIS DRAWING IS THE PROPERTY OF EMERY WINSLOW SCALE COMPANY SEYMOUR, CONNECTICUT. THE INFORMATION CONTAINED HEREIN IS CONFIDENTIAL AND IS NOT TO BE USED OR DISSEMINATED TO OTHERS WITHOUT THE EXPRESS WRITTEN CONSENT OF EMERY WINSLOW SCALE COMPANY.		DRAWN: S. JOHNSON DATE: 05/27/2021	SCALE 1:60 FIRST USED ON DRAWING NO. 205681 REV. A
		CHECKED: DATE:	
		ACAD FILENAME:	
		LAYERS USED:	

CONCRETE SCHEDULE			
	VOLUME (CUBIC YARDS)		
APPROACHES	9.4		
FLOOR	39.6		
TOTAL	49.0		
MISC. STEEL			
PIT COPING	3 X 3 X 1/4	23 LN. FT	113 LBS

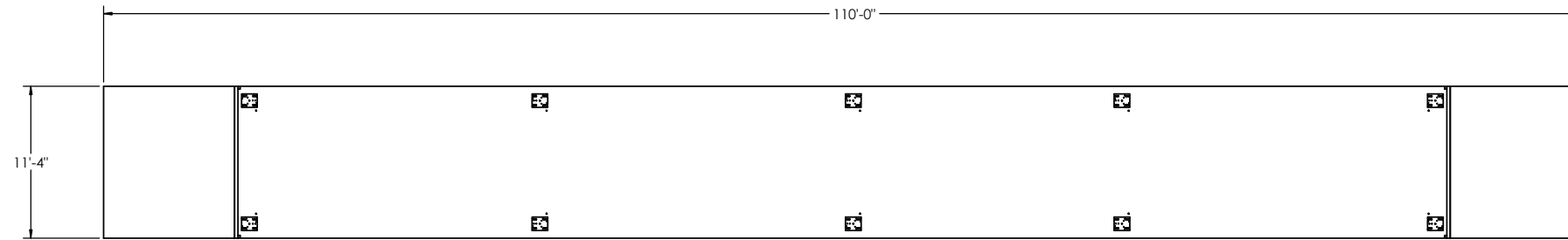
CONCRETE LAYOUT



DETAIL C



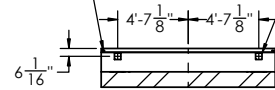
DETAIL OF BULKHEAD INSTALLATION
NO SCALE



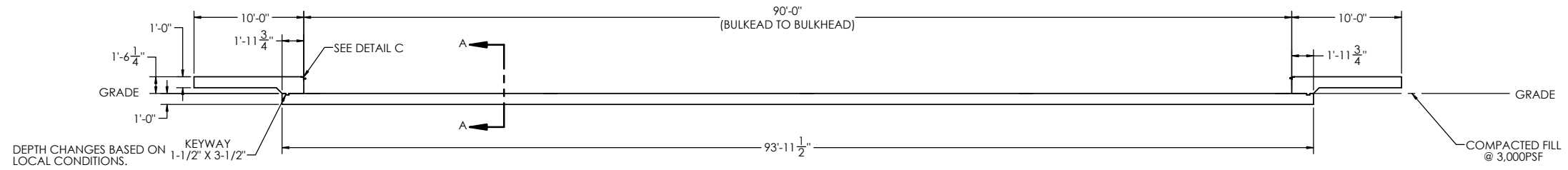
**PRELIMINARY NOT FOR
CONSTRUCTION FOR
ILLUSTRATION ONLY**

TRANSVERSE CHECKING TO BE INSTALLED AFTER SCALE IS INSTALLED. DO NOT INSTALL ELECTRONIC LC'S UNTIL AFTER ALL WELDING IS COMPLETE

MAX. 10,000LB IMPACT AT EACH CHK BOLT BUMPER



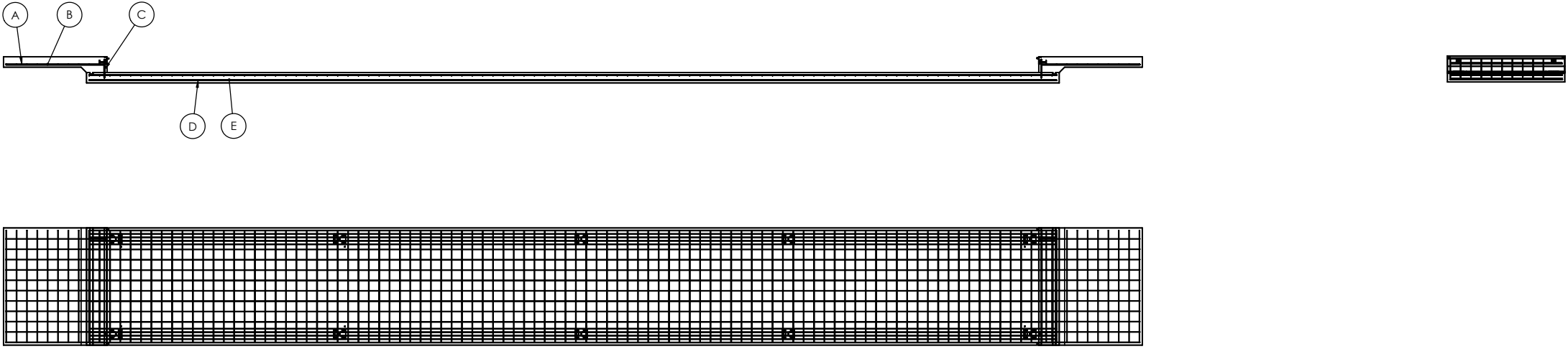
SECTION A-A



		ALL SHARP CORNERS AND EDGES TO BE BROKEN		EMERY WINSLOW SCALE COMPANY	
		UNLESS OTHERWISE SPECIFIED DIMENSIONS ARE IN INCHES		SEYMOUR, CT. U.S.A. TERRE HAUTE, IN.	
		MACHINING FABRICATION		FOUNDATION, CONCRETE SLAB 90' X 11', STEEL DECK	
LTR		DATE	BY	DRAWN: S. JOHNSON DATE: 05/27/2021	
		THIS DRAWING IS THE PROPERTY OF EMERY WINSLOW SCALE COMPANY SEYMOUR, CONNECTICUT. THE INFORMATION CONTAINED HEREIN IS CONFIDENTIAL AND IS NOT TO BE USED OR DISSEMINATED TO OTHERS WITHOUT THE EXPRESS WRITTEN CONSENT OF EMERY WINSLOW SCALE COMPANY.		CHECKED: DATE: ACAD FILENAME: LAYERS USED:	
SCALE	FIRST USED ON	DRAWING NO.	REV.		
1:75		205681	A		

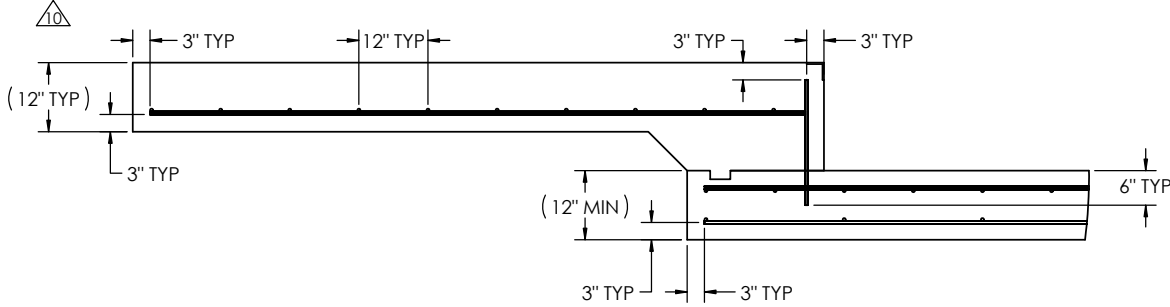
REBAR LAYOUT

MATERIAL REQUIREMENTS				
REBAR SCHEDULE				
BAL. NO.	QUANTITY	LENGTH (FT.-IN.)	DESCRIPTION	WEIGHT
A	22	9' 6"	# 4 @ 12 O.C.	140
B	20	10' 10"	# 4 @ 12 O.C.	145
C	22	1' 9 1/4"	# 4 @ 12 O.C.	26
D	32	93' 5 1/2"	# 4 AS SHOWN	1998
E	141	10' 10"	# 4 AS SHOWN	1020
TOTAL WEIGHT OF REBAR (LBS.)				3329
TOTAL LENGTH OF REBAR (FT.)				4983

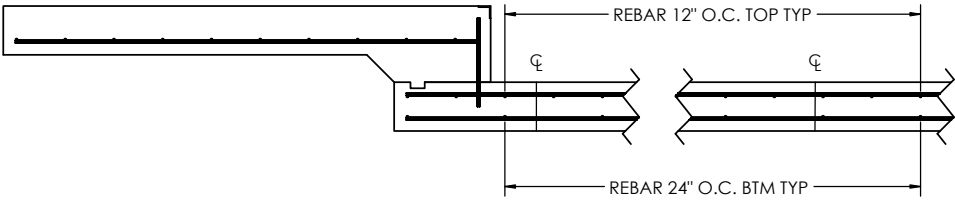


APPROACH STANDARD VIEW

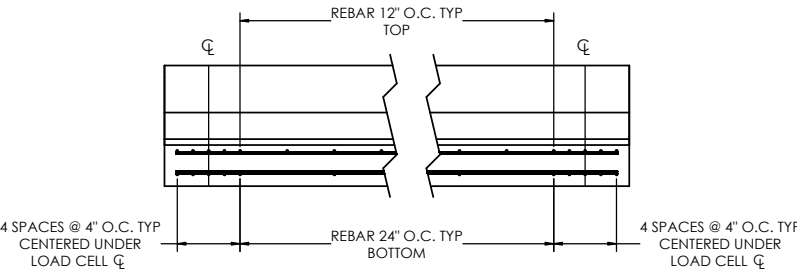
NOTES: 1) LEFT AND RIGHT APPROACHES ARE MIRROR IMAGES OF EACH OTHER AND CONTAIN AN IDENTICAL PART LIST



REBAR SPACING LENGTH



REBAR SPACING WIDTH



**PRELIMINARY NOT FOR
CONSTRUCTION FOR
ILLUSTRATION ONLY**

ALL SHARP CORNERS AND EDGES TO BE BROKEN		EMERY WINSLOW SCALE COMPANY <small>SEYMOUR, CT. U.S.A. TERRE HAUTE, IN.</small>	
UNLESS OTHERWISE SPECIFIED DIMENSIONS ARE IN INCHES		FOUNDATION, CONCRETE SLAB 90' X 11', STEEL DECK	
MACHINING FABRICATION		SCALE 1:80	
.XX: ±.01 .XX: ±.13		DRAWN: S. JOHNSON DATE: 05/27/2021	
.XXX: ±.005		CHECKED: DATE:	
THIS DRAWING IS THE PROPERTY OF EMERY WINSLOW SCALE COMPANY SEYMOUR, CONNECTICUT. THE INFORMATION CONTAINED HEREIN IS CONFIDENTIAL AND IS NOT TO BE USED OR DISSEMINATED TO OTHERS WITHOUT THE EXPRESS WRITTEN CONSENT OF EMERY WINSLOW SCALE COMPANY.		ACAD FILENAME: LAYERS USED:	
LTR		DATE BY	
FIRST USED ON		DRAWING NO. 205681	
REV. A		REV. A	