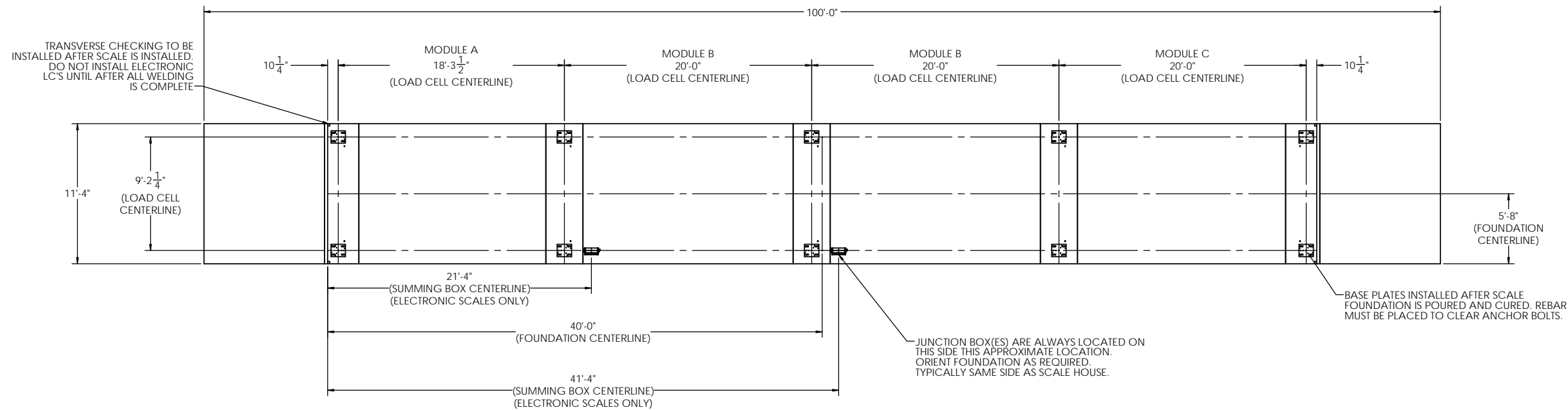
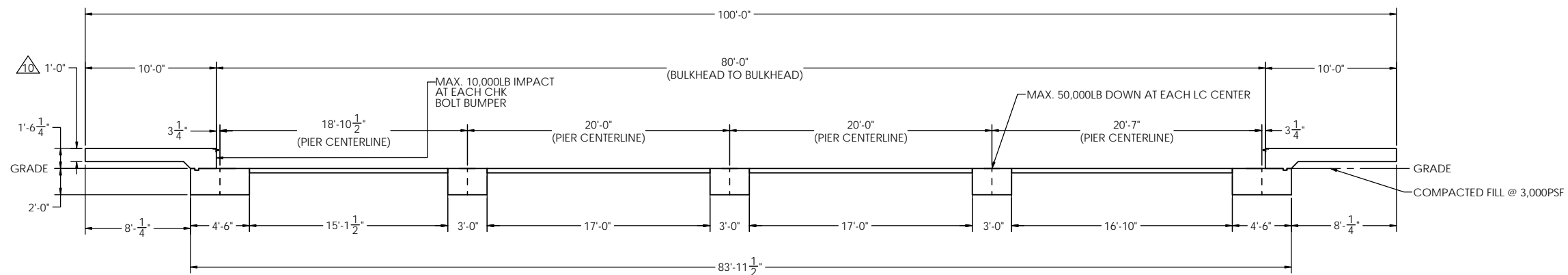


DETAILS

REVISION		INIT	DATE
REV.	ECO		
A		SPJ	07/22/2019



PRELIMINARY NOT FOR CONSTRUCTION FOR ILLUSTRATION ONLY



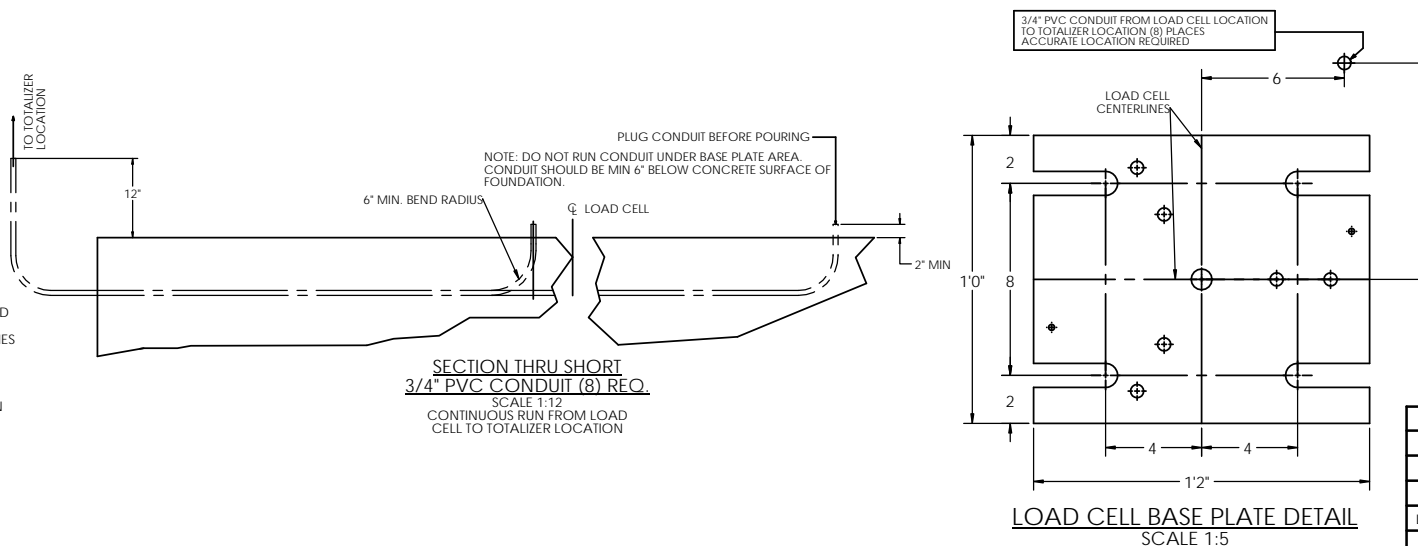
FOR NON COMMERCIAL SCALES PROVIDE AN APPROACH OF 2 FEET MINIMUM LENGTH WHICH IS LEVEL AND IN THE SAME PLANE AS THE PLATFORM.

FOR COMMERCIAL SCALES CHECK WITH LOCAL WEIGHTS AND MEASURES OFFICIALS BEFORE STARTING CONSTRUCTIONS. NATIONAL INSTITUTE OF STANDARDS AND TECHNOLOGY (NIST) HANDBOOK H44 REQUIRES:

- A) A STRAIGHT APPROACH OF AT LEAST ONE-HALF THE LENGTH OF THE PLATFORM.
- B) NOT LESS THAN 10 FEET OF APPROACH ADJACENT TO THE PLATFORM TO BE CONSTRUCTED OF CONCRETE OR SIMILAR DURABLE MATERIAL AND TO BE LEVEL AND IN THE SAME PLANE AS THE PLATFORM.

NOTES:

1. CONCRETE STRENGTH: $f_c = 4000$ PSI @ 28 DAYS
REINFORCING ROD: $F_y = 60,000$ PSI, ASTM A615 GRADE 60
ALL CONCRETE WORK TO BE DONE PER CRSI CODE
ALL FOUNDATION MATERIAL AND LABOR BY OTHERS
ALWAYS WORK FROM CERTIFIED DRAWINGS
2. PIERS AS SHOWN ARE SIZED FOR 3,000 LB/SQ FT.
THE END USER SHALL BE RESPONSIBLE FOR DETERMINING WHETHER OR NOT SOIL CHARACTERISTICS MEET THE REQUIREMENT.
3. THE CONCRETE AND REBAR SPECIFICATIONS SHOWN ARE FOR A NATIONWIDE RANGE OF CONDITIONS AND MAY NEED MODIFICATION FOR LOCAL CONDITIONS.
EMERY WINSLOW SCALE WILL NOT BE RESPONSIBLE FOR ANY CHANGES NECESSITATED BY ANY REGULATORY AUTHORITIES OR LOCAL SITE CONDITIONS.
4. APPROACH COPING (BULKHEAD) TO BE ON A COMMON PLANE WITHIN 1/4".
5. TOP OF REBAR MUST BE PLACED TO CLEAR ANCHOR BOLTS. ANCHOR BOLTS ARE TO BE INSTALLED AFTER FOUNDATION HAS CURED.
6. PIERS MUST BE INSTALLED WITH EXTREME CARE AND MUST NOT BE ALLOWED TO SHIFT.
7. THESE PLANS ARE NOT SUITABLE WHERE SOIL MIGRATION IN AN ISSUE. SOIL MUST BE STABLE AND NOT SUBJECT TO FLOODING OR OTHER POSSIBLE CAUSES OF SOIL MIGRATION THAT MAY RESULT IN SHIFTING OF THE PIERS.
8. BASE PLATES ARE NOT GROUTED. IF GROUTING IS REQUIRED ADD GROUT THICKNESS TO APPROACH DEPTH SHOWN.
9. THERE ARE (2) ANCHOR BOLTS PER BASE PLATE. THEY SHOULD BE PLACED DIAGONALLY FROM EACH OTHER.
10. APPROACH THICKNESS MAY BE 10" MINIMUM WHERE ALLOWED BY STATE REGULATIONS
11. REFER TO ASSEMBLY DRAWING FOR BASE PLATE ORIENTATION.

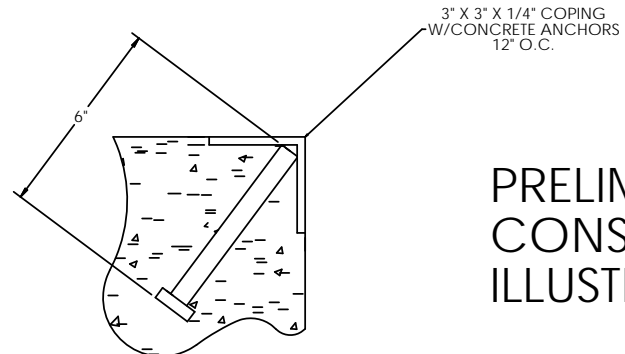


S. JOHNSON 07/22/2019		ALL SHARP CORNERS AND EDGES TO BE BROKEN		EMERY WINSLOW SCALE COMPANY SEYMOUR, CT. U.S.A. TERRE HAUTE, IN.	
UNLESS OTHERWISE SPECIFIED DIMENSIONS ARE IN INCHES		MACHINING FABRICATION		FOUNDATION, CONCRETE PIER, 80' X 11', STEEL DECK	
XX: +.01 XXX: +.005		XX: +.13		SCALE 1:60 FIRST USED ON DRAWING NO. 196536 REV. A	
DRAWN: S. JOHNSON DATE: 07/22/2019		CHECKED: DATE:		THIS DRAWING IS THE PROPERTY OF EMERY WINSLOW SCALE COMPANY SEYMOUR, CONNECTICUT. THE INFORMATION CONTAINED HEREIN IS CONFIDENTIAL AND IS NOT TO BE USED OR DISSEMINATED TO OTHERS WITHOUT THE EXPRESS WRITTEN CONSENT OF EMERY WINSLOW SCALE COMPANY.	
ACAD FILENAME:		LAYERS USED:			

CONCRETE SCHEDULE			
	VOLUME (CUBIC YARDS)		
APPROACHES	9.4		
CLEANOUT	9.3		
PIERS	15.1		
TOTAL	33.8		
MISC. STEEL			
PIT COPING	3 X 3 X 1/4	23 LN. FT	113 LBS

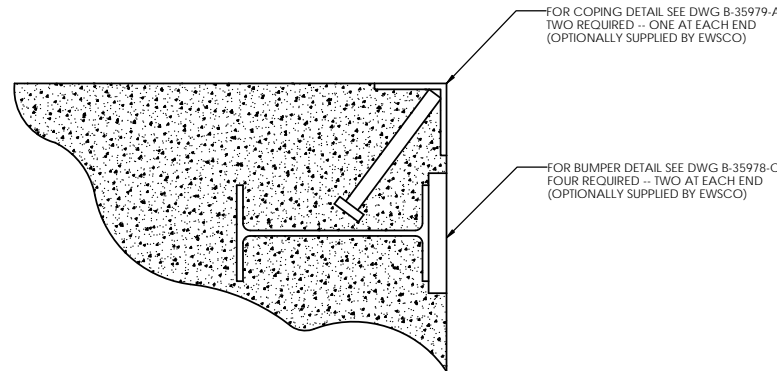
VOLUME SHOWN FOR STATED PIER DEPTH.
ADD ADDITIONAL CONCRETE FOR
DEEPER PIERS AS NEEDED.

CONCRETE LAYOUT

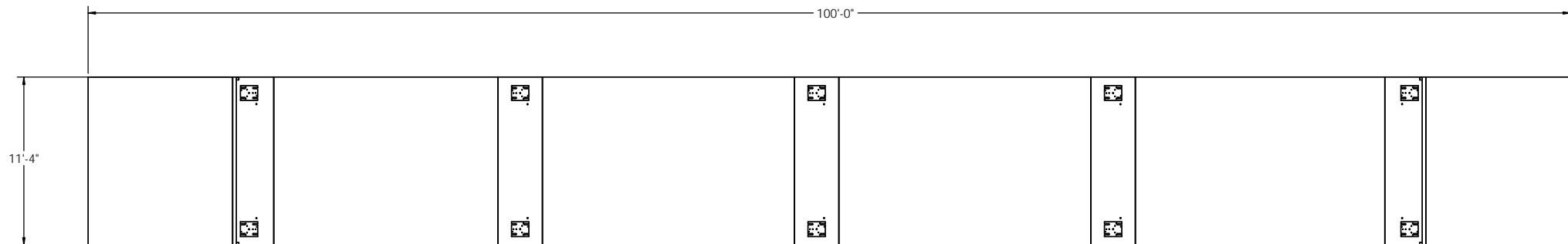


DETAIL C

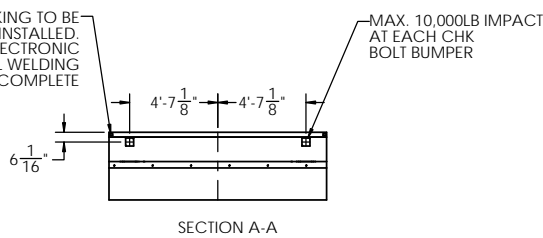
PRELIMINARY NOT FOR
CONSTRUCTION FOR
ILLUSTRATION ONLY



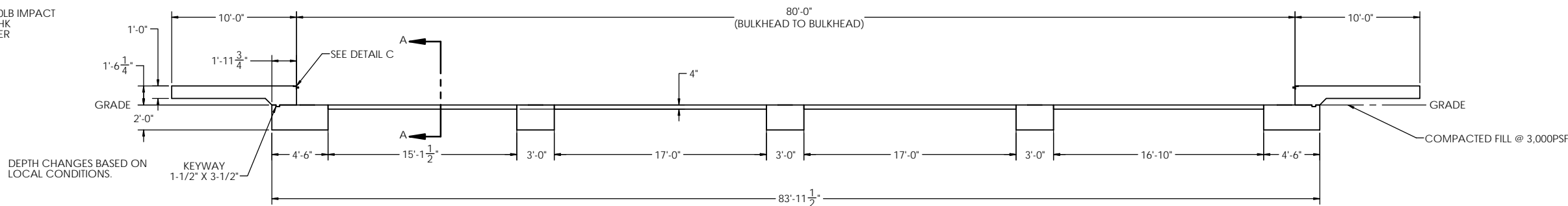
DETAIL OF BULKHEAD INSTALLATION
NO SCALE



TRANSVERSE CHECKING TO BE
INSTALLED AFTER SCALE IS INSTALLED.
DO NOT INSTALL ELECTRONIC
LC'S UNTIL AFTER ALL WELDING
IS COMPLETE



SECTION A-A

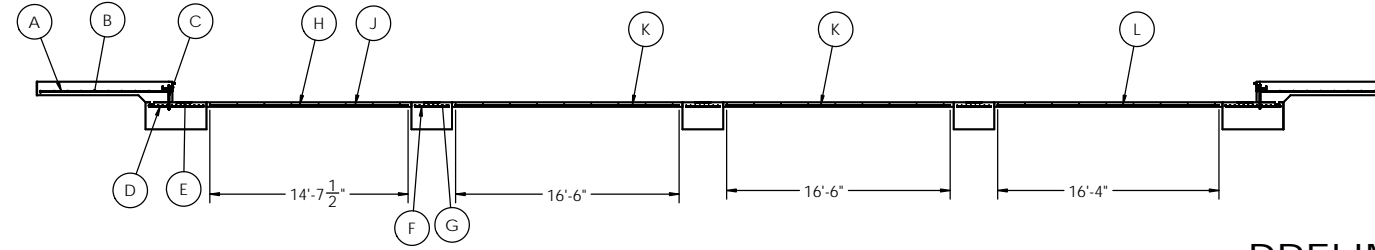


DEPTH CHANGES BASED ON
LOCAL CONDITIONS.

KEYWAY
1-1/2" X 3-1/2"

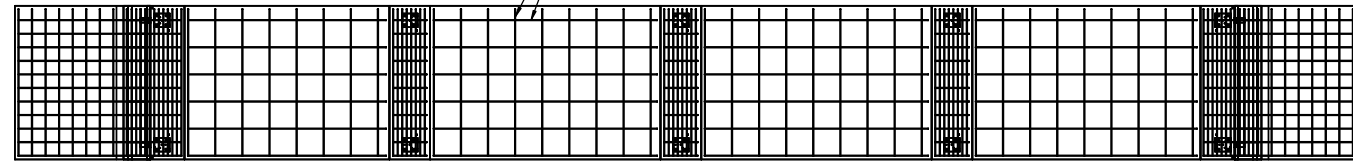
S. JOHNSON 07/22/2019		ALL SHARP CORNERS AND EDGES TO BE BROKEN		EMERY WINSLOW SCALE COMPANY SEYMOUR, CT. U.S.A. TERRE HAUTE, IN.	
UNLESS OTHERWISE SPECIFIED DIMENSIONS ARE IN INCHES		MACHINING XX: ±.01 XXX: ±.005		FABRICATION XX: ±.13	
LTR	DATE	BY	DRAWN: S. JOHNSON	DATE: 07/22/2019	FOUNDATION, CONCRETE PIER, 80' X 11', STEEL DECK
THIS DRAWING IS THE PROPERTY OF EMERY WINSLOW SCALE COMPANY SEYMOUR, CONNECTICUT. THE INFORMATION CONTAINED HEREIN IS CONFIDENTIAL AND IS NOT TO BE USED OR DISSEMINATED TO OTHERS WITHOUT THE EXPRESS WRITTEN CONSENT OF EMERY WINSLOW SCALE COMPANY.			CHECKED:	DATE:	SCALE: 1:60
			ACAD FILENAME:	LAYERS USED:	FIRST USED ON: 196536
					DRAWING NO. 196536
					REV. A

REBAR LAYOUT



PRELIMINARY NOT FOR
CONSTRUCTION FOR
ILLUSTRATION ONLY

#4 REBAR SPACED EVERY 24"
OR YOU MAY SUBSTITUTE
6X6X10 GA. WIRE MESH



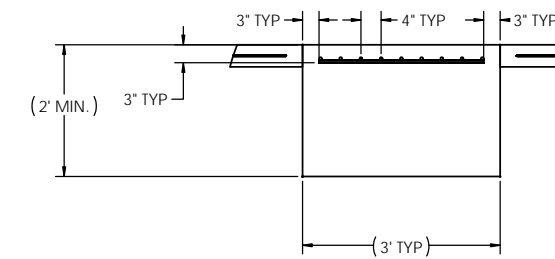
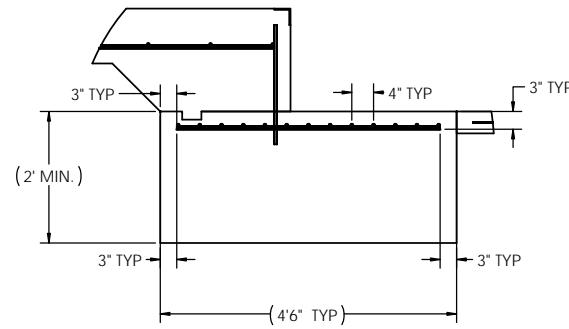
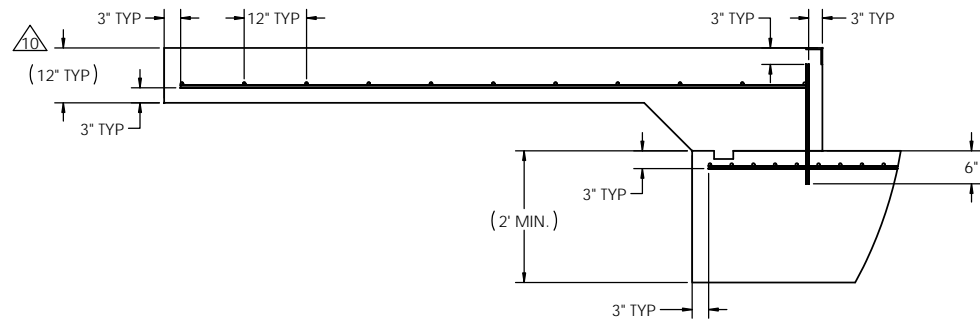
MATERIAL REQUIREMENTS				
REBAR SCHEDULE				
BAL. NO.	QUANTITY	LENGTH (FT-IN.)	DESCRIPTION	WEIGHT
A	22	9' 6"	# 4 @ 12 O.C.	140
B	20	10' 10"	# 4 @ 12 O.C.	145
C	22	1' 9 1/4"	# 4 @ 12 O.C.	26
D	22	4' 0"	# 4 @ 12 O.C.	59
E	26	10' 10"	# 4 @ 4 O.C.	188
F	33	2' 6"	# 4 @ 12 O.C.	55
G	24	10' 10"	# 4 @ 4 O.C.	174
CLEANOUT SCHEDULE				
H	QUANTITY	LENGTH (FT-IN.)	DESCRIPTION	WEIGHT
H	6	14' 7 1/2"	# 4 @ 24 O.C.	59
J	35	10' 10"	# 4 @ 24 O.C.	253
K	12	16' 6"	# 4 @ 24 O.C.	132
L	6	16' 4"	# 4 @ 24 O.C.	65
TOTAL WEIGHT OF REBAR (LBS.)				1296
TOTAL LENGTH OF REBAR (FT.)				1940
WIRE MESH	6 X 6-10 GA.	725 SQ FT		

APPROACH STANDARD VIEWS

APPROACH PIER STANDARD VIEWS

PIER STANDARD VIEWS

NOTES: 1) LEFT AND RIGHT APPROACHES ARE MIRROR IMAGES OF EACH OTHER AND CONTAIN AN IDENTICAL PART LIST



S. JOHNSON 07/22/2019		ALL SHARP CORNERS AND EDGES TO BE BROKEN		EMERY WINSLOW SCALE COMPANY SEYMOUR, CT. U.S.A. TERRE HAUTE, IN.	
UNLESS OTHERWISE SPECIFIED DIMENSIONS ARE IN INCHES		MACHINING FABRICATION		FOUNDATION, CONCRETE PIER, 80' X 11', STEEL DECK	
DATE	BY	XX: ±.01 XXX: ±.005	XX: ±.13	SCALE	FIRST USED ON
DRAWN: S. JOHNSON DATE: 07/22/2019		CHECKED: DATE:		DRAWING NO.	REV.
THIS DRAWING IS THE PROPERTY OF EMERY WINSLOW SCALE COMPANY SEYMOUR, CONNECTICUT. THE INFORMATION CONTAINED HEREIN IS CONFIDENTIAL AND IS NOT TO BE USED OR DISSEMINATED TO OTHERS WITHOUT THE EXPRESS WRITTEN CONSENT OF EMERY WINSLOW SCALE COMPANY.		ACAD FILENAME: LAYERS USED:		1:48	196536 A