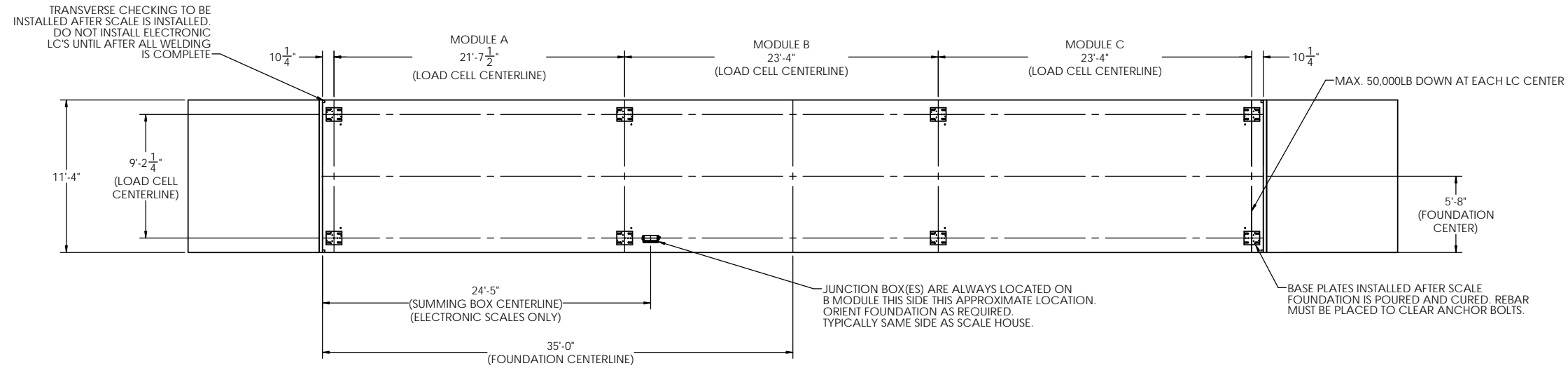
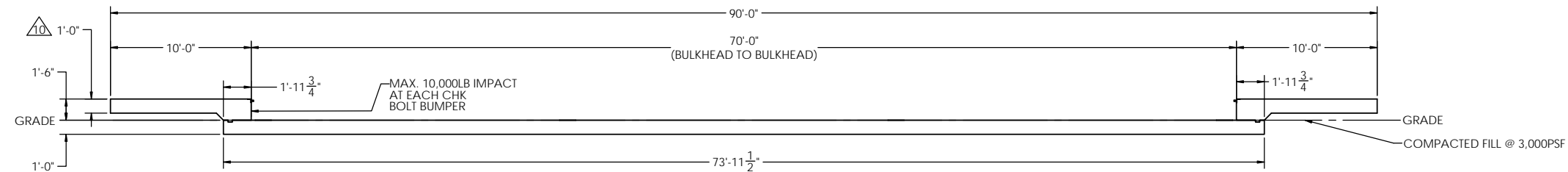


# DETAILS

REV.	ECO	DESCRIPTION	INIT	DATE
A		ENGINEERING RELEASE	SPJ	06/11/2019



PRELIMINARY NOT FOR  
CONSTRUCTION FOR  
ILLUSTRATION ONLY



FOR NON COMMERCIAL SCALES PROVIDE AN APPROACH OF 2 FEET MINIMUM LENGTH WHICH IS LEVEL AND IN THE SAME PLANE AS THE PLATFORM.

FOR COMMERCIAL SCALES CHECK WITH LOCAL WEIGHTS AND MEASURES OFFICIALS BEFORE STARTING CONSTRUCTIONS. NATIONAL INSTITUTE OF STANDARDS AND TECHNOLOGY (NIST) HANDBOOK H44 REQUIRES:

A) A STRAIGHT APPROACH OF AT LEAST ONE-HALF THE LENGTH OF THE PLATFORM.  
B) NOT LESS THAN 10 FEET OF APPROACH ADJECENT TO THE PLATFORM TO BE CONSTRUCTED OF CONCRETE OR SIMILAR DURABLE MATERIAL AND TO BE LEVEL AND IN THE SAME PLANE AS THE PLATFORM.

**NOTES:**

1. CONCRETE STRENGTH:  $f'c = 4000$  PSI @ 28 DAYS  
REINFORCING ROD:  $Fy = 60,000$  PSI, ASTM A615 GRADE 60  
ALL CONCRETE WORK TO BE DONE PER CRSI CODE  
ALL FOUNDATION MATERIAL AND LABOR BY OTHERS  
ALWAYS WORK FROM CERTIFIED DRAWINGS

2. PIERS AS SHOWN ARE SIZED FOR 3,000 LB/SQ FT.  
THE END USER SHALL BE RESPONSIBLE FOR DETERMINING WHETHER OR NOT SOIL CHARACTERISTICS MEET THE REQUIREMENT.

3. THE CONCRETE AND REBAR SPECIFICATIONS SHOWN ARE FOR A NATIONWIDE RANGE OF CONDITIONS AND MAY NEED MODIFICATION FOR LOCAL CONDITIONS.  
EMERY WINSLOW SCALE WILL NOT BE RESPONSIBLE FOR ANY CHANGES NECESSITATED BY ANY REGULATORY AUTHORITIES OR LOCAL SITE CONDITIONS.

4. APPROACH COPING (BULKHEAD) TO BE ON A COMMON PLANE WITHIN  $1/4"$ .

5. TOP OF REBAR MUST BE PLACED TO CLEAR ANCHOR BOLTS. ANCHOR BOLTS ARE TO BE INSTALLED AFTER FOUNDATION HAS CURED.

6. PIERS MUST BE INSTALLED WITH EXTREME CARE AND MUST NOT BE ALLOWED TO SHIFT.

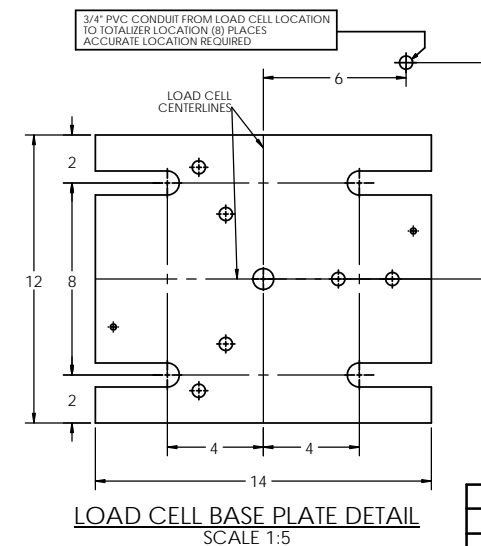
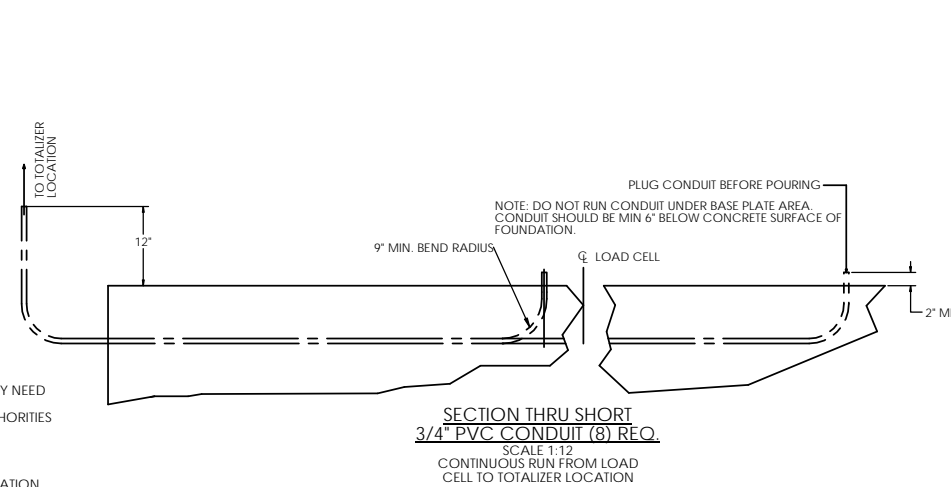
7. THESE PLANS ARE NOT SUITABLE WHERE SOIL MIGRATION IN AN ISSUE. SOIL MUST BE STABLE AND NOT SUBJECT TO FLOODING OR OTHER POSSIBLE CAUSES OF SOIL MIGRATION THAT MAY RESULT IN SHIFTING OF THE PIERS.

8. BASE PLATES ARE NOT GROUTED. IF GROUTING IS REQUIRED ADD GROUT THICKNESS TO APPROACH DEPTH SHOWN.

9. THERE ARE (2) ANCHOR BOLTS PER BASE PLATE. THEY SHOULD BE PLACED DIAGONALLY FROM EACH OTHER.

10. APPROACH THICKNESS MAY BE  $10"$  MINIMUM WHERE ALLOWED BY STATE REGULATIONS

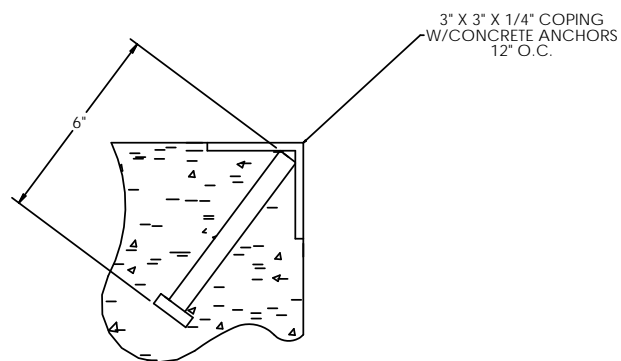
11. REFER TO ASSEMBLY DRAWING FOR BASE PLATE ORIENTATION



LTR		DATE	BY	ALL SHARP CORNERS AND EDGES TO BE BROKEN	EMERY WINSLOW SCALE COMPANY SEYMOUR, CT. U.S.A. TERRE HAUTE, IN.
CHECKED:		DATE:	BY:	UNLESS OTHERWISE SPECIFIED DIMENSIONS ARE IN INCHES	FOUNDATION, CONCRETE SLAB 70' X 11', CONCRETE DECK
ACAD FILENAME:		DATE:	BY:	XX: ±.01 XX: ±.13 XXX: ±.005	
THIS DRAWING IS THE PROPERTY OF EMERY WINSLOW SCALE COMPANY SEYMOUR, CONNECTICUT. THE INFORMATION CONTAINED HEREIN IS CONFIDENTIAL AND IS NOT TO BE USED OR DISSEMINATED TO OTHERS WITHOUT THE EXPRESS WRITTEN CONSENT OF EMERY WINSLOW SCALE COMPANY.				DRAWN: S. JOHNSON DATE: 06/07/2019	SCALE 1:60
				FIRST USED ON	DRAWING NO. 196630
				REVISION	REV. A

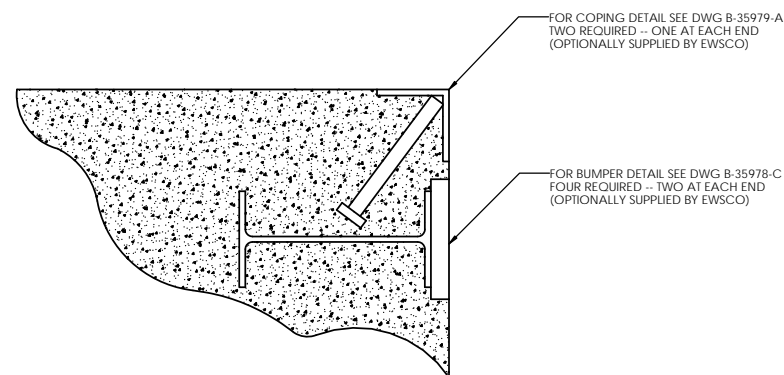
# CONCRETE LAYOUT

CONCRETE SCHEDULE			
		VOLUME (CUBIC YARDS)	
APPROACHES		9.4	
FLOOR		31.2	
TOTAL		40.6	
MISC. STEEL			
PIT COPING	3 X 3 X 1/4	23 LN .FT	113 LBS

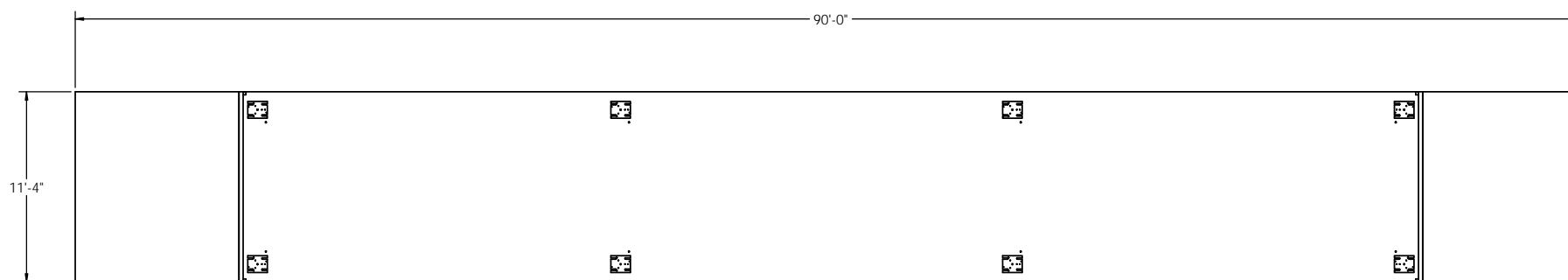


DETAIL C

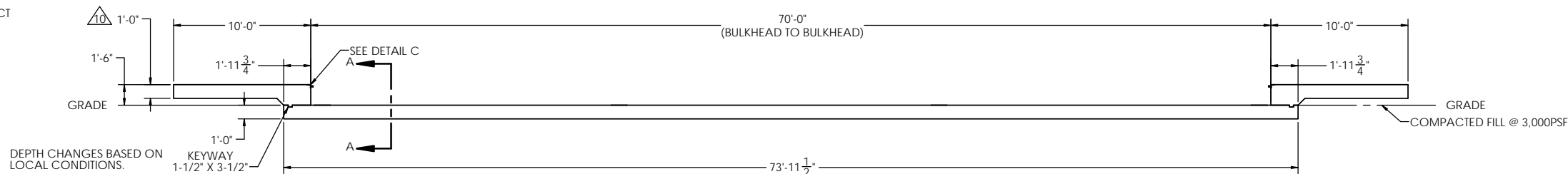
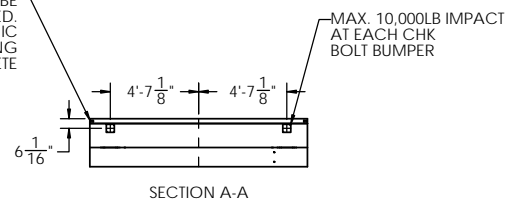
PRELIMINARY NOT FOR  
CONSTRUCTION FOR  
ILLUSTRATION ONLY



DETAIL OF BULKHEAD INSTALLATION  
NO SCALE



TRANSVERSE CHECKING TO BE  
INSTALLED AFTER SCALE IS INSTALLED.  
DO NOT INSTALL ELECTRONIC  
LC'S UNTIL AFTER ALL WELDING  
IS COMPLETE

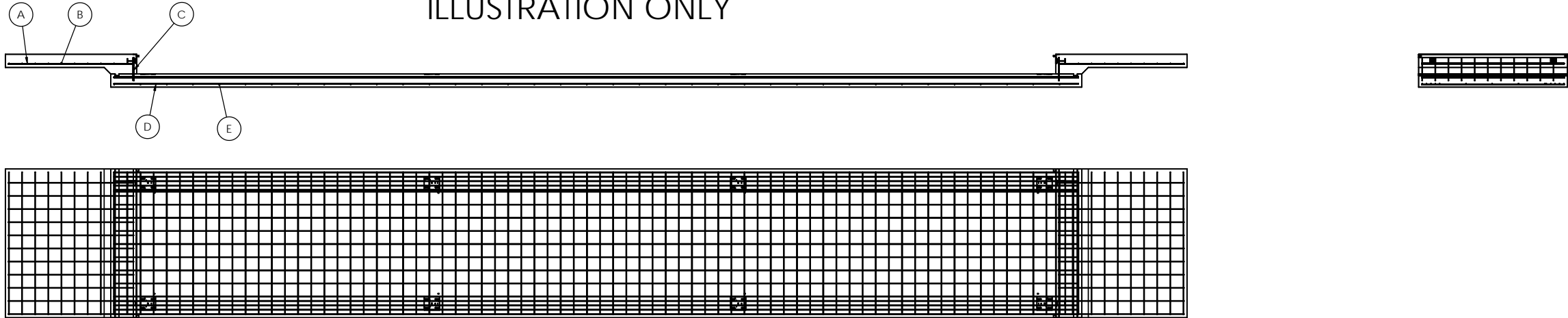


LTR		DATE	BY	ALL SHARP CORNERS AND EDGES TO BE BROKEN  UNLESS OTHERWISE SPECIFIED DIMENSIONS ARE IN INCHES MACHINING FABRICATION XX: ±.01 XXX: ±.005	EMERY WINSLOW SCALE COMPANY SEYMOUR, CT. U.S.A. TERRE HAUTE, IN.
DRAWN: S JOHNSON		DATE: 07/24/2019			
THIS DRAWING IS THE PROPERTY OF EMERY WINSLOW SCALE COMPANY SEYMOUR, CONNECTICUT. THE INFORMATION CONTAINED HEREIN IS CONFIDENTIAL AND IS NOT TO BE USED OR DISSEMINATED TO OTHERS WITHOUT THE EXPRESS WRITTEN CONSENT OF EMERY WINSLOW SCALE COMPANY.				CHECKED: _____ DATE: _____ ACAD FILENAME: _____ LAYERS USED: _____	FOUNDATION, CONCRETE SLAB 70' X 11', CONCRETE DECK  SCALE: 1:60 FIRST USED ON: _____ DRAWING NO: 196630 REV: A

# REBAR LAYOUT

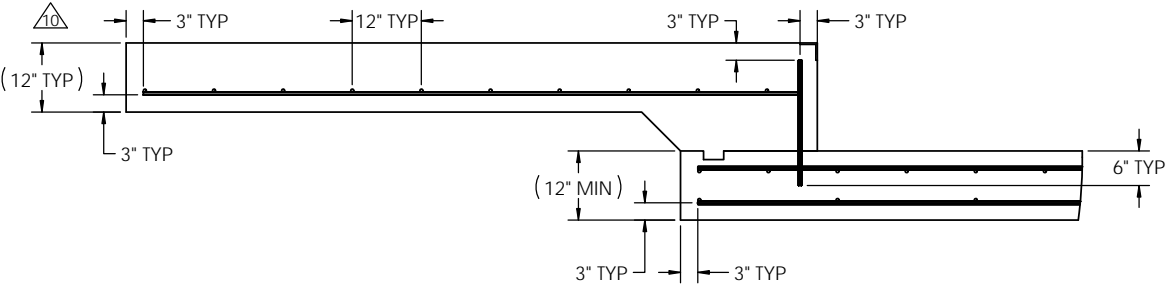
PRELIMINARY NOT FOR  
CONSTRUCTION FOR  
ILLUSTRATION ONLY

MATERIAL REQUIREMENTS				
REBAR SCHEDULE				
BAL. NO.	QUANTITY	LENGTH (FT.-IN.)	DESCRIPTION	WEIGHT
A	22	9' 6"	# 4 @ 12 O.C.	140
B	20	10' 10"	# 4 @ 12 O.C.	145
C	22	1' 9 1/4"	# 4 @ 12 O.C.	26
D	32	73' 5 1/2"	# 4 AS SHOWN	1570
E	110	10' 10"	# 4 AS SHOWN	796
TOTAL WEIGHT OF REBAR (LBS.)				2677
TOTAL LENGTH OF REBAR (FT.)				4007

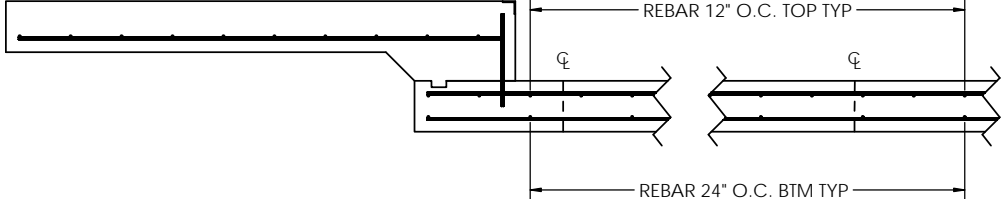


### APPROACH STANDARD VIEW

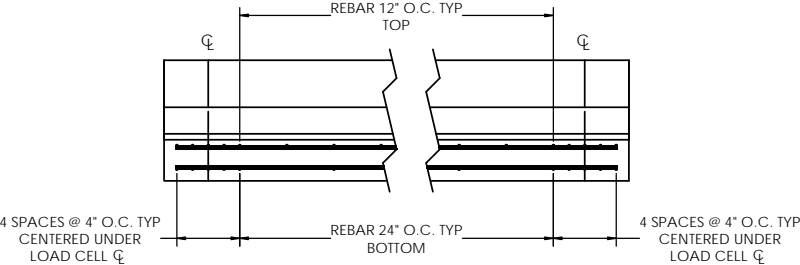
**NOTES:** 1) LEFT AND RIGHT APPROACHES ARE MIRROR IMAGES OF EACH OTHER AND CONTAIN AN IDENTICAL PART LIST



### REBAR SPACING LENGTH



### REBAR SPACING WIDTH



LTR		DATE	BY	ALL SHARP CORNERS AND EDGES TO BE BROKEN	EMERY WINSLOW SCALE COMPANY SEYMOUR, CT. U.S.A. TERRE HAUTE, IN.
THIS DRAWING IS THE PROPERTY OF EMERY WINSLOW SCALE COMPANY SEYMOUR, CONNECTICUT. THE INFORMATION CONTAINED HEREIN IS CONFIDENTIAL AND IS NOT TO BE USED OR DISSEMINATED TO OTHERS WITHOUT THE EXPRESS WRITTEN CONSENT OF EMERY WINSLOW SCALE COMPANY.		DATE	BY	UNLESS OTHERWISE SPECIFIED DIMENSIONS ARE IN INCHES MACHINING .XX: ±.01 FABRICATION .XXX: ±.005	FOUNDATION, CONCRETE SLAB 70' X 11', CONCRETE DECK
DRAWN: S. JOHNSON		DATE: 07/24/2019	CHECKED:	SCALE 1:60	FIRST USED ON
ACAD FILENAME:		LAYERS USED:	DATE:	DRAWING NO. 196630	REV. A