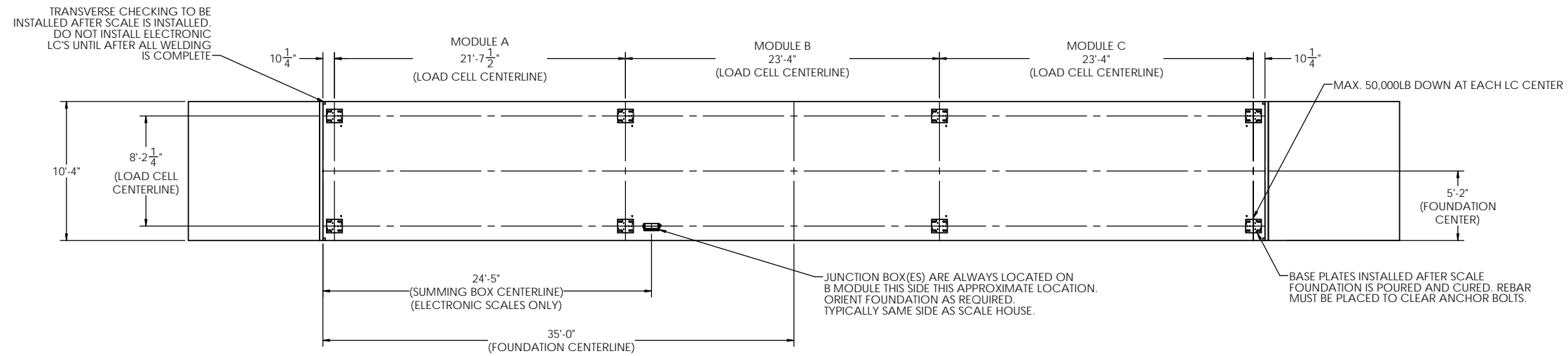
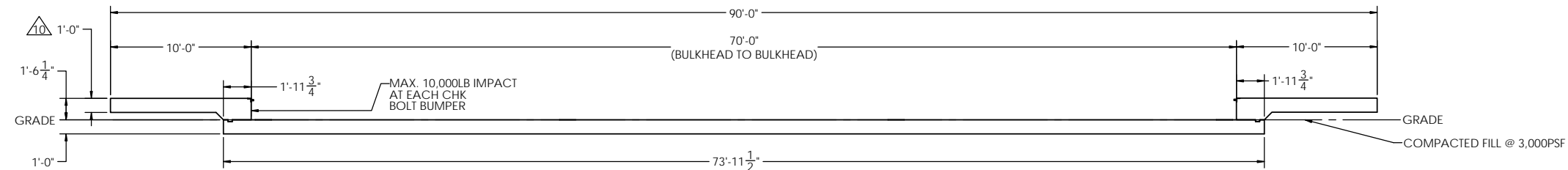


# DETAILS

REVISION		INIT	DATE
REV.	ECO		
A		SPJ	06/07/2019



PRELIMINARY NOT FOR  
CONSTRUCTION FOR  
ILLUSTRATION ONLY



FOR NON COMMERCIAL SCALES PROVIDE AN APPROACH OF 2 FEET MINIMUM LENGTH WHICH IS LEVEL AND IN THE SAME PLANE AS THE PLATFORM.

FOR COMMERCIAL SCALES CHECK WITH LOCAL WEIGHTS AND MEASURES OFFICIALS BEFORE STARTING CONSTRUCTIONS. NATIONAL INSTITUTE OF STANDARDS AND TECHNOLOGY (NIST) HANDBOOK H44 REQUIRES:

A) A STRAIGHT APPROACH OF AT LEAST ONE-HALF THE LENGTH OF THE PLATFORM.  
B) NOT LESS THAN 10 FEET OF APPROACH ADJACENT TO THE PLATFORM TO BE CONSTRUCTED OF CONCRETE OR SIMILAR DURABLE MATERIAL AND TO BE LEVEL AND IN THE SAME PLANE AS THE PLATFORM.

NOTES:

1. CONCRETE STRENGTH:  $f'_c = 4000$  PSI @ 28 DAYS  
REINFORCING ROD:  $F_y = 60,000$  PSI, ASTM A615 GRADE 60  
ALL CONCRETE WORK TO BE DONE PER CRSI CODE  
ALL FOUNDATION MATERIAL AND LABOR BY OTHERS  
ALWAYS WORK FROM CERTIFIED DRAWINGS

2. PIERS AS SHOWN ARE SIZED FOR 3,000 LB/SQ. FT.  
THE END USER SHALL BE RESPONSIBLE FOR DETERMINING WHETHER OR NOT SOIL CHARACTERISTICS MEET THE REQUIREMENT.

3. THE CONCRETE AND REBAR SPECIFICATIONS SHOWN ARE FOR A NATIONWIDE RANGE OF CONDITIONS AND MAY NEED MODIFICATION FOR LOCAL CONDITIONS.  
EMERY WINSLOW SCALE WILL NOT BE RESPONSIBLE FOR ANY CHANGES NECESSITATED BY ANY REGULATORY AUTHORITIES OR LOCAL SITE CONDITIONS.

4. APPROACH COPING (BULKHEAD) TO BE ON A COMMON PLANE WITHIN 1/4".

5. TOP OF REBAR MUST BE PLACED TO CLEAR ANCHOR BOLTS. ANCHOR BOLTS ARE TO BE INSTALLED AFTER FOUNDATION HAS CURED.

6. PIERS MUST BE INSTALLED WITH EXTREME CARE AND MUST NOT BE ALLOWED TO SHIFT.

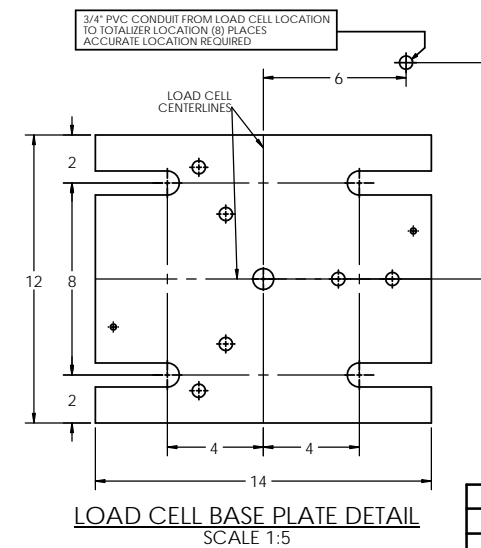
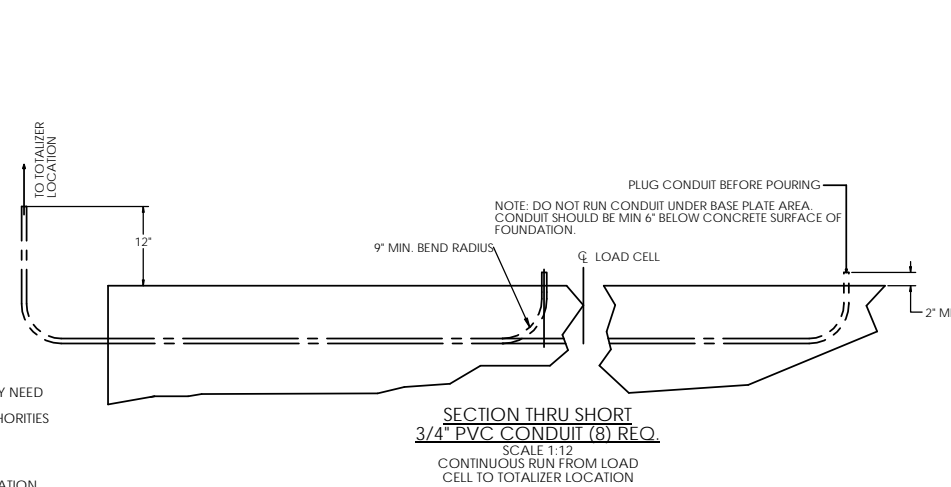
7. THESE PLANS ARE NOT SUITABLE WHERE SOIL MIGRATION IN AN ISSUE. SOIL MUST BE STABLE AND NOT SUBJECT TO FLOODING OR OTHER POSSIBLE CAUSES OF SOIL MIGRATION THAT MAY RESULT IN SHIFTING OF THE PIERS.

8. BASE PLATES ARE NOT GROUTED. IF GROUTING IS REQUIRED ADD GROUT THICKNESS TO APPROACH DEPTH SHOWN.

9. THERE ARE (2) ANCHOR BOLTS PER BASE PLATE. THEY SHOULD BE PLACED DIAGONALLY FROM EACH OTHER.

△ APPROACH THICKNESS MAY BE 10' MINIMUM WHERE ALLOWED BY STATE REGULATIONS

11. REFER TO ASSEMBLY DRAWING FOR BASE PLATE ORIENTATION.

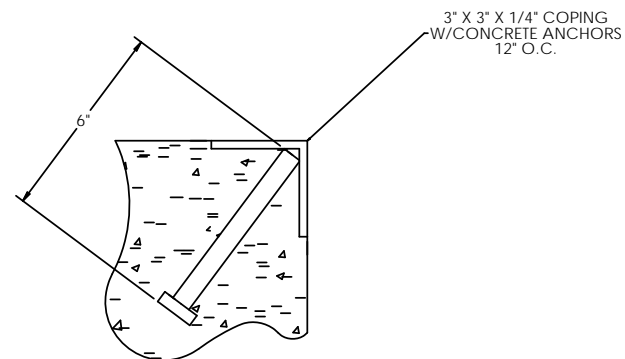


LTR		DATE	BY	ALL SHARP CORNERS AND EDGES TO BE BROKEN	EMERY WINSLOW SCALE COMPANY SEYMOUR, CT. U.S.A. TERRE HAUTE, IN.
CHECKED:		DATE:	BY:	UNLESS OTHERWISE SPECIFIED DIMENSIONS ARE IN INCHES	FOUNDATION, CONCRETE SLAB 70' X 10', STEEL DECK
ACAD FILENAME:		DATE:	BY:	XX: ±.01 XXX: ±.005	
THIS DRAWING IS THE PROPERTY OF EMERY WINSLOW SCALE COMPANY SEYMOUR, CONNECTICUT. THE INFORMATION CONTAINED HEREIN IS CONFIDENTIAL AND IS NOT TO BE USED OR DISSEMINATED TO OTHERS WITHOUT THE EXPRESS WRITTEN CONSENT OF EMERY WINSLOW SCALE COMPANY.		DRAWN: S. JOHNSON	DATE: 06/07/2019	SCALE	FIRST USED ON
				1:60	DRAWING NO.
					196000
					REV. A

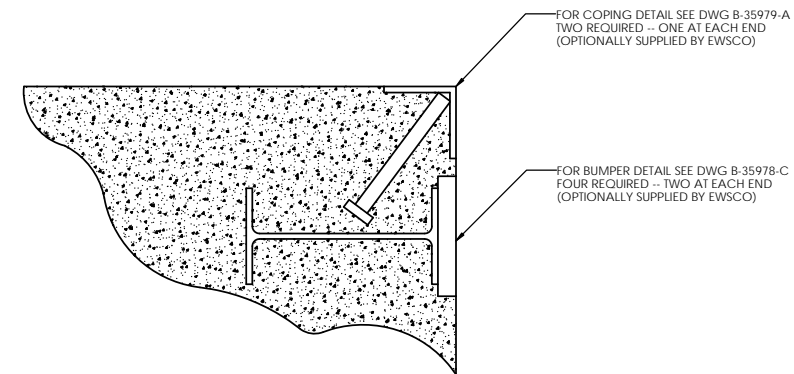
CONCRETE SCHEDULE			
	VOLUME (CUBIC YARDS)		
APPROACHES	8.6		
FLOOR	28.4		
TOTAL	37.0		
MISC. STEEL			
PIT COPING	3 X 3 X 1/4	21 LN .FT	103 LBS

# CONCRETE LAYOUT

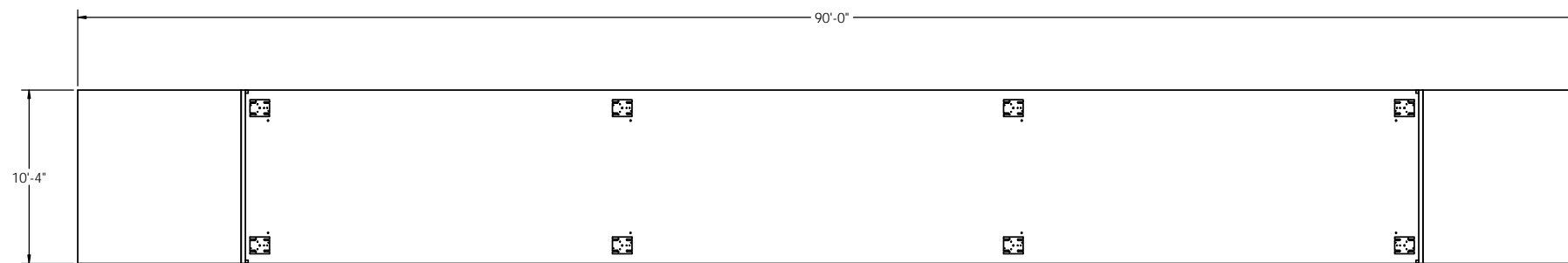
PRELIMINARY NOT FOR  
CONSTRUCTION FOR  
ILLUSTRATION ONLY



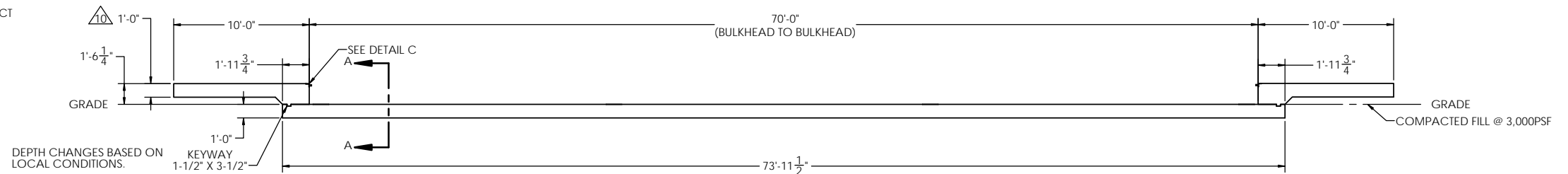
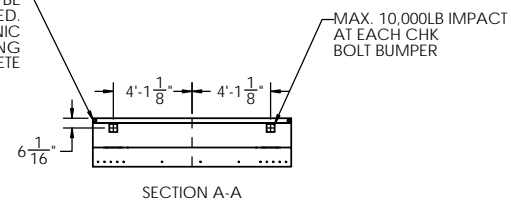
DETAIL C



DETAIL OF BULKHEAD INSTALLATION  
NO SCALE



TRANSVERSE CHECKING TO BE  
INSTALLED AFTER SCALE IS INSTALLED.  
DO NOT INSTALL ELECTRONIC  
LC'S UNTIL AFTER ALL WELDING  
IS COMPLETE



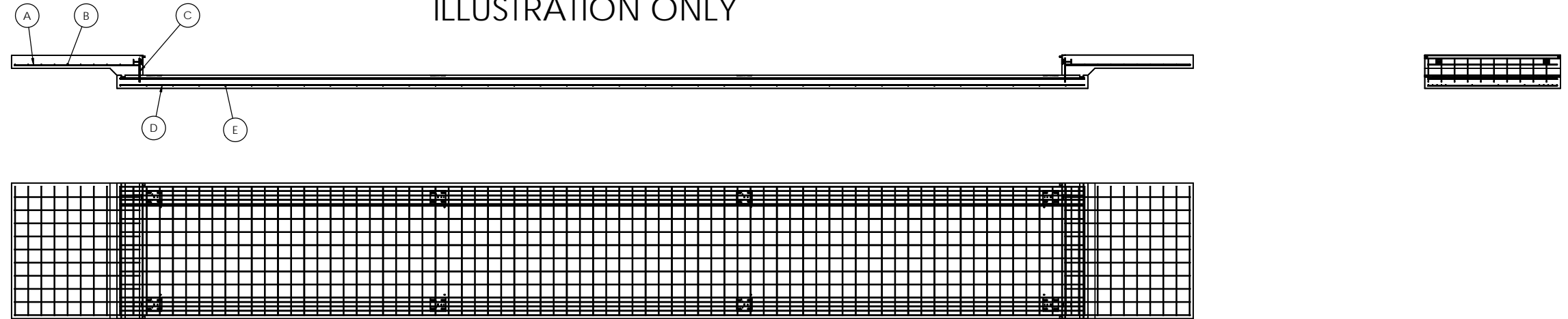
LTR		DATE	BY	ALL SHARP CORNERS AND EDGES TO BE BROKEN	EMERY WINSLOW SCALE COMPANY SEYMOUR, CT. U.S.A. TERRE HAUTE, IN.
DRAWN: S JOHNSON		DATE: 06/07/2019		UNLESS OTHERWISE SPECIFIED DIMENSIONS ARE IN INCHES	
THIS DRAWING IS THE PROPERTY OF EMERY WINSLOW SCALE COMPANY SEYMOUR, CONNECTICUT. THE INFORMATION CONTAINED HEREIN IS CONFIDENTIAL AND IS NOT TO BE USED OR DISSEMINATED TO OTHERS WITHOUT THE EXPRESS WRITTEN CONSENT OF EMERY WINSLOW SCALE COMPANY.		CHECKED: DATE:		MACHINING FABRICATION XX: ±.01 XX: ±.13 XXX: ±.005	FOUNDATION, CONCRETE SLAB 70' X 10', STEEL DECK
SCALE		FIRST USED ON	DRAWING NO.	LAYERS USED:	
1:60			196000		

**MATERIAL REQUIREMENTS**

REBAR SCHEDULE				
BAL. NO.	QUANTITY	LENGTH (FT.-IN.)	DESCRIPTION	WEIGHT
A	20	9' 6"	# 4 @ 12 O.C.	127
B	20	9' 10"	# 4 @ 12 O.C.	131
C	20	1' 9 1/4"	# 4 @ 12 O.C.	24
D	30	73' 5 1/2"	# 4 AS SHOWN	1472
E	110	9' 10"	# 4 AS SHOWN	723
<b>TOTAL WEIGHT OF REBAR (LBS.)</b>				<b>2477</b>
<b>TOTAL LENGTH OF REBAR (FT.)</b>				<b>3708</b>

# REBAR LAYOUT

PRELIMINARY NOT FOR  
CONSTRUCTION FOR  
ILLUSTRATION ONLY

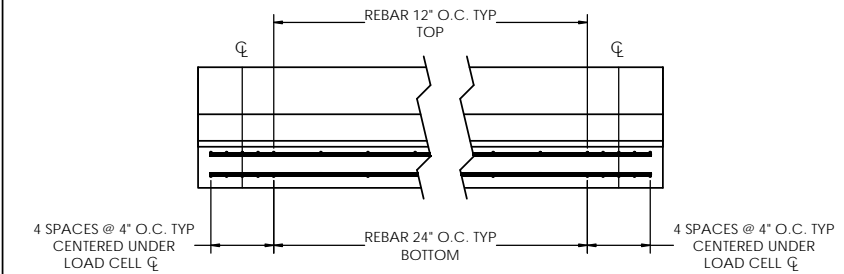
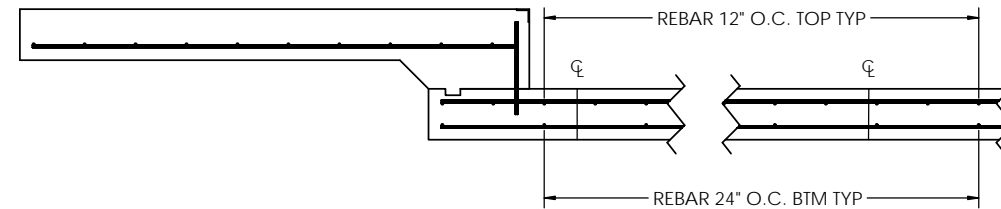
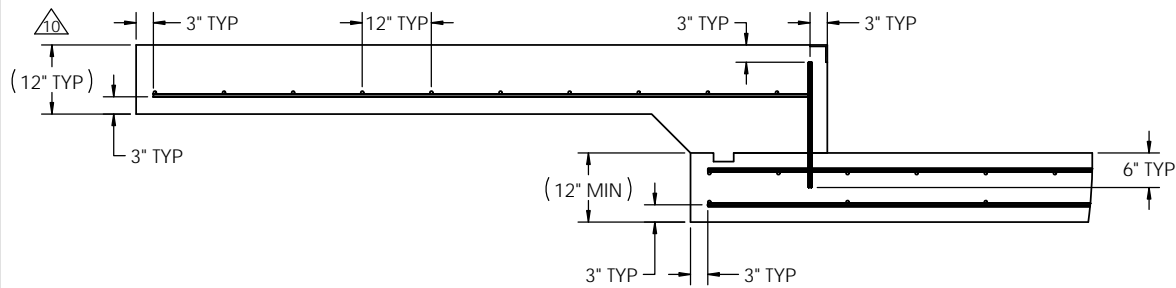


### APPROACH STANDARD VIEW

### REBAR SPACING LENGTH

### REBAR SPACING WIDTH

**NOTES:** 1) LEFT AND RIGHT APPROACHES ARE MIRROR IMAGES OF EACH OTHER AND CONTAIN AN IDENTICAL PART LIST



LTR		DATE	BY	ALL SHARP CORNERS AND EDGES TO BE BROKEN	EMERY WINSLOW SCALE COMPANY SEYMOUR, CT. U.S.A. TERRE HAUTE, IN.
THIS DRAWING IS THE PROPERTY OF EMERY WINSLOW SCALE COMPANY SEYMOUR, CONNECTICUT. THE INFORMATION CONTAINED HEREIN IS CONFIDENTIAL AND IS NOT TO BE USED OR DISSEMINATED TO OTHERS WITHOUT THE EXPRESS WRITTEN CONSENT OF EMERY WINSLOW SCALE COMPANY.				UNLESS OTHERWISE SPECIFIED DIMENSIONS ARE IN INCHES MACHINING .XX: ±.01 FABRICATION .XXX: ±.005	FOUNDATION, CONCRETE SLAB 70' X 10', STEEL DECK
DRAWN: S. JOHNSON		DATE: 06/07/2019		SCALE 1:60	
CHECKED:		DATE:		FIRST USED ON	DRAWING NO. 196000
ACAD FILENAME:		LAYERS USED:		REV. A	