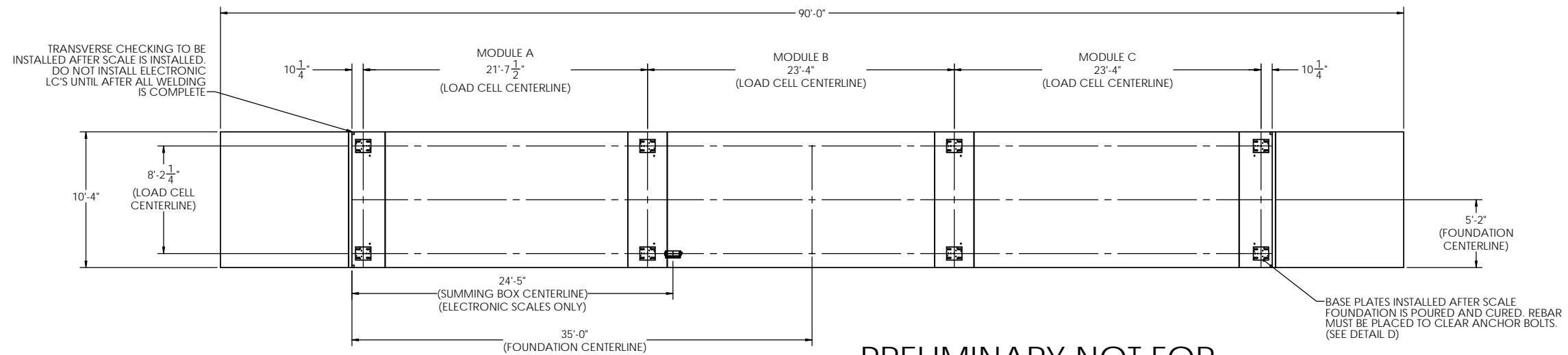
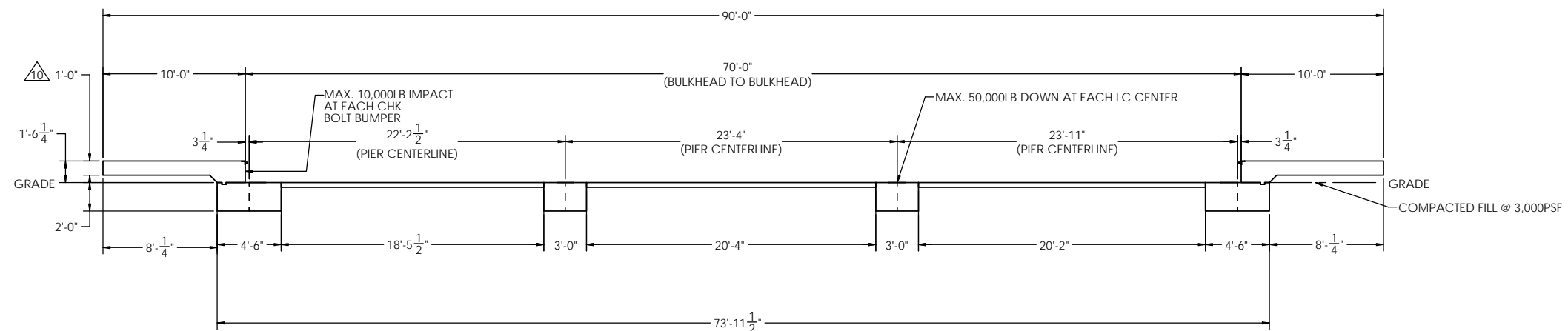


DETAILS

REV.	ECO	REVISION DESCRIPTION	INIT	DATE
A	-	ENGINEERING RELEASE	SPJ	07/19/2019



PRELIMINARY NOT FOR
CONSTRUCTION FOR
ILLUSTRATION ONLY



FOR NON COMMERCIAL SCALES PROVIDE AN APPROACH OF 2 FEET MINIMUM LENGTH WHICH IS LEVEL AND IN THE SAME PLANE AS THE PLATFORM.

FOR COMMERCIAL SCALES CHECK WITH LOCAL WEIGHTS AND MEASURES OFFICIALS BEFORE STARTING CONSTRUCTIONS. NATIONAL INSTITUTE OF STANDARDS AND TECHNOLOGY (NIST) HANDBOOK H44 REQUIRES:

A) A STRAIGHT APPROACH OF AT LEAST ONE-HALF THE LENGTH OF THE PLATFORM.
B) NOT LESS THAN 10 FEET OF APPROACH ADJACENT TO THE PLATFORM TO BE CONSTRUCTED OF CONCRETE OR SIMILAR DURABLE MATERIAL AND TO BE LEVEL AND IN THE SAME PLANE AS THE PLATFORM.

NOTES:

1. CONCRETE STRENGTH: $f'_c = 4000$ PSI @ 28 DAYS
REINFORCING ROD: $F_y = 60,000$ PSI, ASTM A615 GRADE 60
ALL CONCRETE WORK TO BE DONE PER CRSI CODE
ALL FOUNDATION MATERIAL AND LABOR BY OTHERS
ALWAYS WORK FROM CERTIFIED DRAWINGS

2. PIERS AS SHOWN ARE SIZED FOR 3,000 LB/SQ FT.
THE END USER SHALL BE RESPONSIBLE FOR DETERMINING WHETHER OR NOT SOIL CHARACTERISTICS MEET THE REQUIREMENT.

3. THE CONCRETE AND REBAR SPECIFICATIONS SHOWN ARE FOR A NATIONWIDE RANGE OF CONDITIONS AND MAY NEED MODIFICATION FOR LOCAL CONDITIONS.
EMERY WINSLOW SCALE WILL NOT BE RESPONSIBLE FOR ANY CHANGES NECESSITATED BY ANY REGULATORY AUTHORITIES OR LOCAL SITE CONDITIONS.

4. APPROACH COPING (BULKHEAD) TO BE ON A COMMON PLANE WITHIN $\frac{1}{4}$ ".

5. TOP OF REBAR MUST BE PLACED TO CLEAR ANCHOR BOLTS. ANCHOR BOLTS ARE TO BE INSTALLED AFTER FOUNDATION HAS CURED.

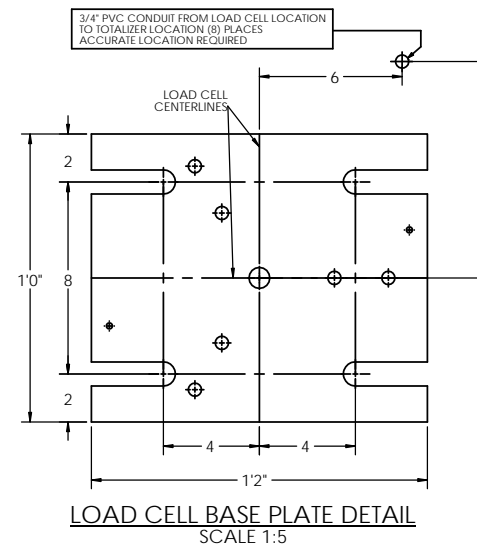
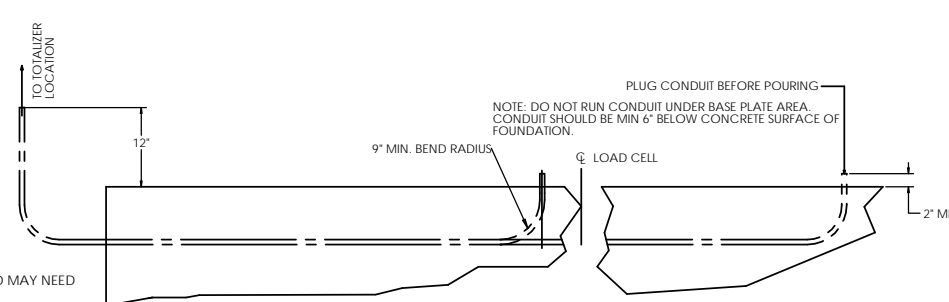
6. PIERS MUST BE INSTALLED WITH EXTREME CARE AND MUST NOT BE ALLOWED TO SHIFT.

7. THESE PLANS ARE NOT SUITABLE WHERE SOIL MIGRATION IS AN ISSUE. SOIL MUST BE STABLE AND NOT SUBJECT TO FLOODING OR OTHER POSSIBLE CAUSES OF SOIL MIGRATION THAT MAY RESULT IN SHIFTING OF THE PIERS.

8. BASE PLATES ARE NOT GROUTED. IF GROUTING IS REQUIRED ADD GROUT THICKNESS TO APPROACH DEPTH SHOWN.

9. THERE ARE (2) ANCHOR BOLTS PER BASE PLATE. THEY SHOULD BE PLACED DIAGONALLY FROM EACH OTHER.

△ APPROACH THICKNESS MAY BE 10" MINIMUM WHERE ALLOWED BY STATE REGULATIONS

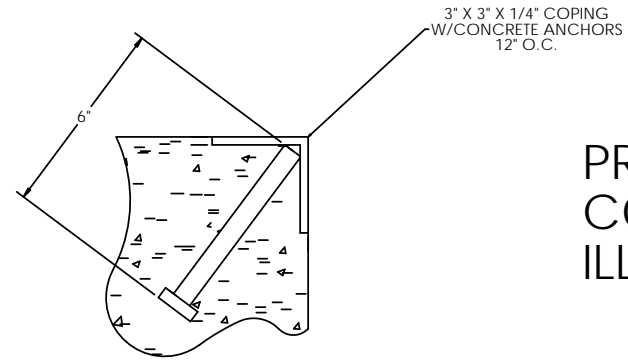


LTR		DATE	BY	ALL SHARP CORNERS AND EDGES TO BE BROKEN	EMERY WINSLOW SCALE COMPANY
THIS DRAWING IS THE PROPERTY OF EMERY WINSLOW SCALE COMPANY SEYMOUR, CONNECTICUT. THE INFORMATION CONTAINED HEREIN IS CONFIDENTIAL AND IS NOT TO BE USED OR DISSEMINATED TO OTHERS WITHOUT THE EXPRESS WRITTEN CONSENT OF EMERY WINSLOW SCALE COMPANY.		CHECKED:	DATE:	UNLESS OTHERWISE SPECIFIED DIMENSIONS ARE IN INCHES	SEYMOUR, CT. U.S.A. TERRE HAUTE, IN.
		ACAD FILENAME:	LAYERS USED:	MACHINING FABRICATION	FOUNDATION, CONCRETE PIER 70' X 10', STEEL DECK
		DRAWN: S. JOHNSON	DATE: 07/22/2019	XX: ±.01	SCALE 1:60
		CHECKED:	DATE:	XXX: ±.005	FIRST USED ON
				XX: ±.13	DRAWING NO. 196532
				XX: ±.005	REV. A

CONCRETE LAYOUT

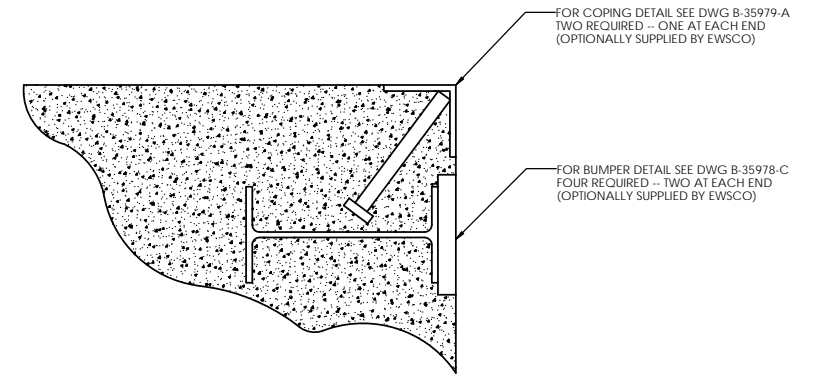
CONCRETE SCHEDULE			
	VOLUME (CUBIC YARDS)		
APPROACHES	8.6		
CLEANOUT	7.6		
PIERS	11.5		
TOTAL	27.6		
MISC. STEEL			
PIT COPING	3 X 3 X 1/4	21 LN. FT	103 LBS

VOLUME SHOWN FOR STATED PIER DEPTH.
ADD ADDITIONAL CONCRETE FOR
DEEPER PIERS AS NEEDED.

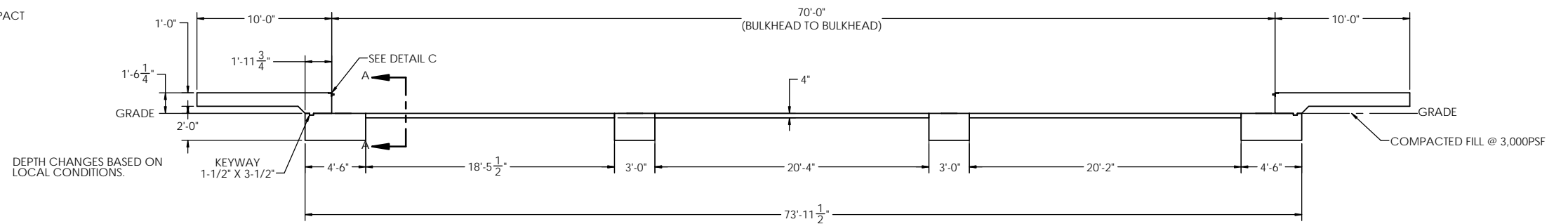
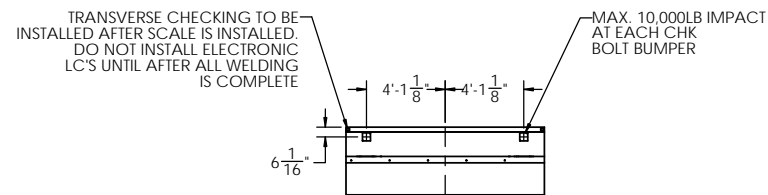
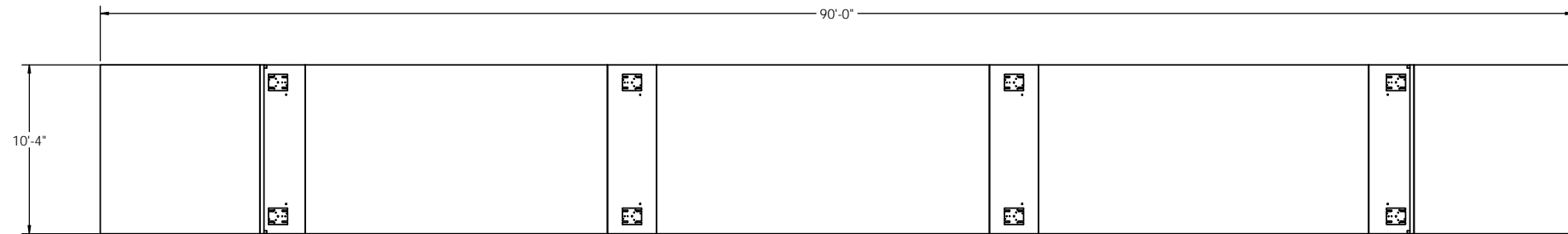


DETAIL C

PRELIMINARY NOT FOR
CONSTRUCTION FOR
ILLUSTRATION ONLY



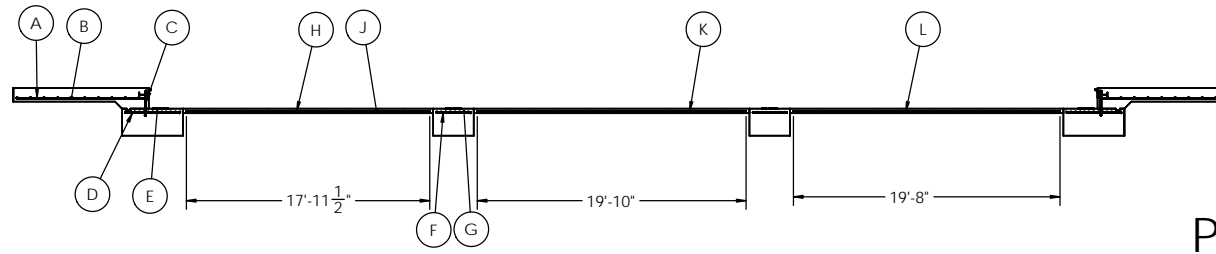
DETAIL OF BULKHEAD INSTALLATION
NO SCALE



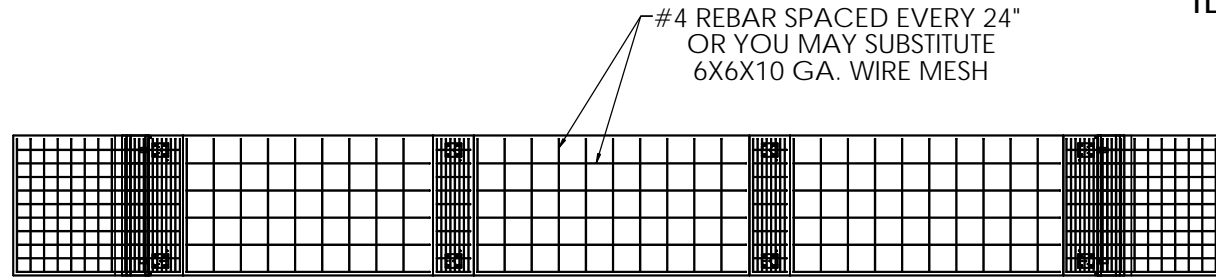
LTR		DATE	BY	ALL SHARP CORNERS AND EDGES TO BE BROKEN	EMERY WINSLOW SCALE COMPANY SEYMOUR, CT. U.S.A. TERRE HAUTE, IN.
THIS DRAWING IS THE PROPERTY OF EMERY WINSLOW SCALE COMPANY SEYMOUR, CONNECTICUT. THE INFORMATION CONTAINED HEREIN IS CONFIDENTIAL AND IS NOT TO BE USED OR DISSEMINATED TO OTHERS WITHOUT THE EXPRESS WRITTEN CONSENT OF EMERY WINSLOW SCALE COMPANY.		DATE	BY		
DRAWN: S. JOHNSON DATE: 07/22/2019				UNLESS OTHERWISE SPECIFIED DIMENSIONS ARE IN INCHES MACHINING FABRICATION XX: ±.01 XXX: ±.005	FOUNDATION, CONCRETE PIER 70' X 10', STEEL DECK
CHECKED: DATE:					
ACAD FILENAME:				SCALE	FIRST USED ON
LAYERS USED:				1:60	DRAWING NO.
					196532
					REV. A

REBAR LAYOUT

MATERIAL REQUIREMENTS				
REBAR SCHEDULE				
BAL. NO.	QUANTITY	LENGTH (FT-IN.)	DESCRIPTION	WEIGHT
A	20	9' 6"	# 4 @ 12 O.C.	127
B	20	9' 10"	# 4 @ 12 O.C.	131
C	20	1' 9 1/4"	# 4 @ 12 O.C.	24
D	20	4' 0"	# 4 @ 12 O.C.	53
E	26	9' 10"	# 4 @ 4 O.C.	171
F	20	2' 6"	# 4 @ 12 O.C.	33
G	16	9' 10"	# 4 @ 4 O.C.	105
CLEANOUT SCHEDULE				
H	5	17' 11 1/2"	# 4 @ 24 O.C.	60
J	29	9' 10"	# 4 @ 24 O.C.	190
K	5	19' 10"	# 4 @ 24 O.C.	66
L	5	19' 8"	# 4 @ 24 O.C.	66
TOTAL WEIGHT OF REBAR (LBS.)				1027
TOTAL LENGTH OF REBAR (FT.)				1538
WIRE MESH	6 X 6-10 GA.		609 SQ FT	



PRELIMINARY NOT FOR
CONSTRUCTION FOR
ILLUSTRATION ONLY

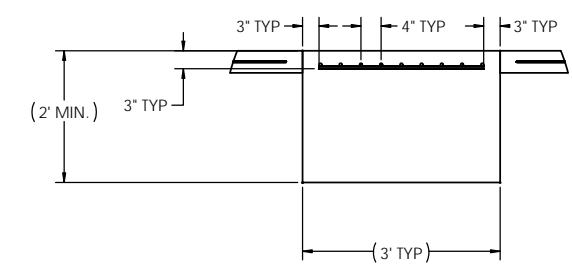
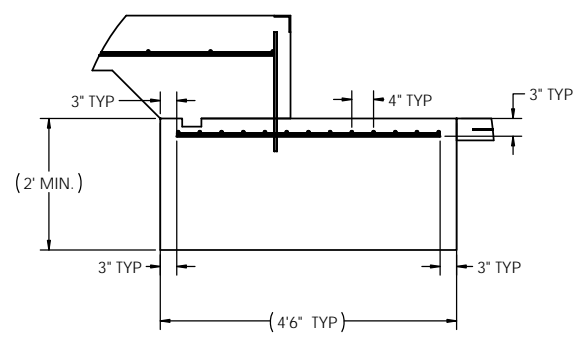
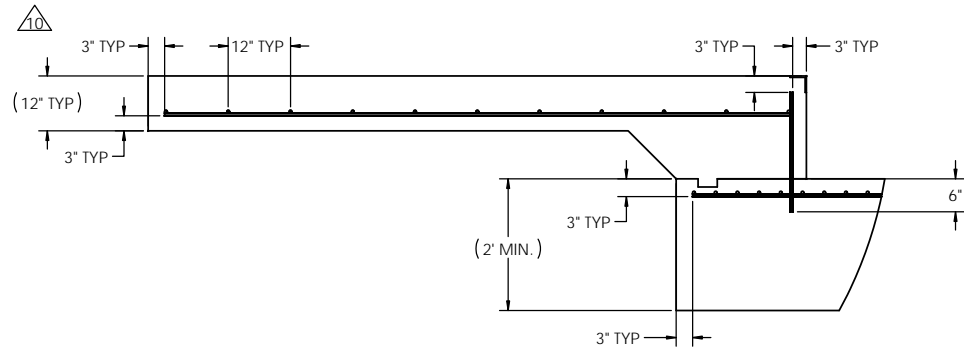


APPROACH STANDARD VIEWS

APPROACH PIER STANDARD VIEWS

PIER STANDARD VIEWS

NOTES: 1) LEFT AND RIGHT APPROACHES ARE MIRROR IMAGES OF EACH OTHER AND CONTAIN AN IDENTICAL PART LIST



		ALL SHARP CORNERS AND EDGES TO BE BROKEN		EMERY WINSLOW SCALE COMPANY	
		UNLESS OTHERWISE SPECIFIED DIMENSIONS ARE IN INCHES		SEYMOUR, CT. U.S.A. TERRE HAUTE, IN.	
		MACHINING FABRICATION		FOUNDATION, CONCRETE PIER 70' X 10', STEEL DECK	
LTR	DATE	BY	XX: ±.01 XXX: ±.005	XX: ±.13	
THIS DRAWING IS THE PROPERTY OF EMERY WINSLOW SCALE COMPANY SEYMOUR, CONNECTICUT. THE INFORMATION CONTAINED HEREIN IS CONFIDENTIAL AND IS NOT TO BE USED OR DISSEMINATED TO OTHERS WITHOUT THE EXPRESS WRITTEN CONSENT OF EMERY WINSLOW SCALE COMPANY.		DRAWN: S. JOHNSON	DATE: 07/22/2019	CHECKED:	DATE:
		ACAD FILENAME:	LAYERS USED:	SCALE	FIRST USED ON
				1:48	DRAWING NO. 196532
				REV. A	