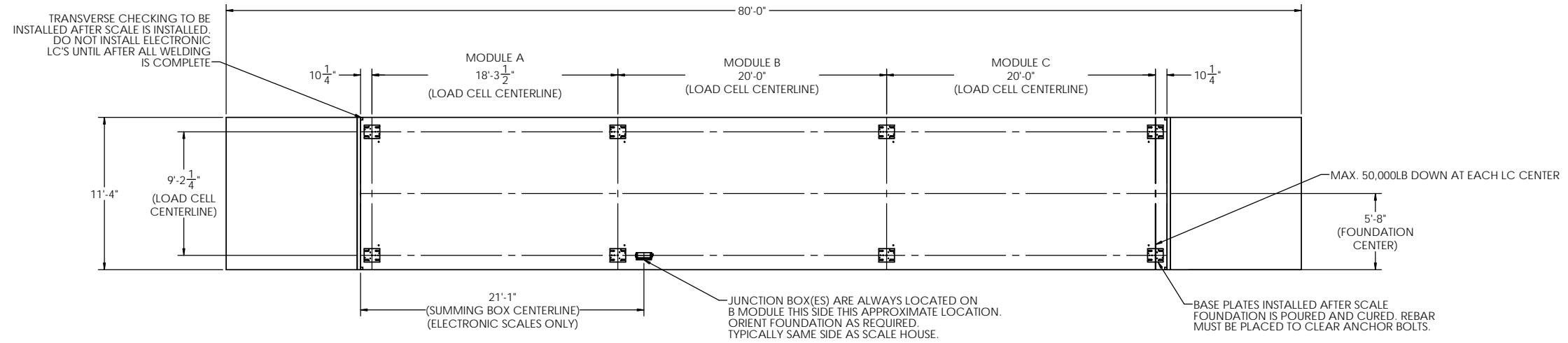
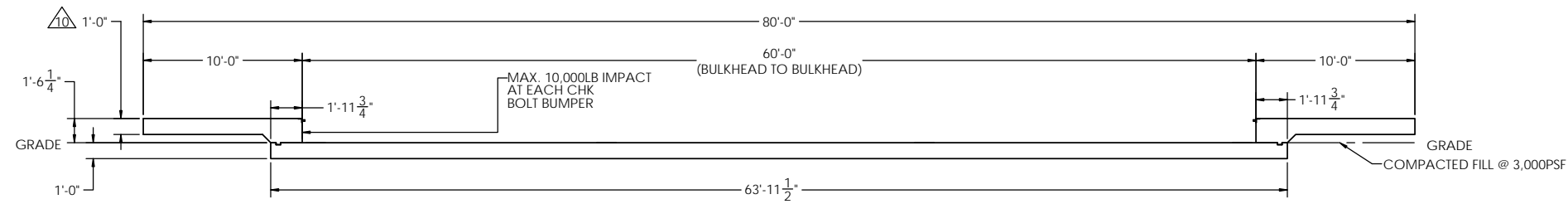


DETAILS

REVISION		INIT	DATE
REV.	ECO		
A		SPJ	07/18/2019



PRELIMINARY NOT FOR
CONSTRUCTION FOR
ILLUSTRATION ONLY



FOR NON COMMERCIAL SCALES PROVIDE AN APPROACH OF 2 FEET MINIMUM LENGTH WHICH IS LEVEL AND IN THE SAME PLANE AS THE PLATFORM.

FOR COMMERCIAL SCALES CHECK WITH LOCAL WEIGHTS AND MEASURES OFFICIALS BEFORE STARTING CONSTRUCTIONS. NATIONAL INSTITUTE OF STANDARDS AND TECHNOLOGY (NIST) HANDBOOK H44 REQUIRES:

- A) A STRAIGHT APPROACH OF AT LEAST ONE-HALF THE LENGTH OF THE PLATFORM.
- B) NOT LESS THAN 10 FEET OF APPROACH ADJACENT TO THE PLATFORM TO BE CONSTRUCTED OF CONCRETE OR SIMILAR DURABLE MATERIAL AND TO BE LEVEL AND IN THE SAME PLANE AS THE PLATFORM.

NOTES:
1. CONCRETE STRENGTH: f'c = 4000 PSI @ 28 DAYS
REINFORCING ROD: Fy = 60,000 PSI, ASTM A615 GRADE 60
ALL CONCRETE WORK TO BE DONE PER CRSI CODE
ALL FOUNDATION MATERIAL AND LABOR BY OTHERS
ALWAYS WORK FROM CERTIFIED DRAWINGS

2. PIERS AS SHOWN ARE SIZED FOR 3,000 LB/SQ FT. THE END USER SHALL BE RESPONSIBLE FOR DETERMINING WHETHER OR NOT SOIL CHARACTERISTICS MEET THE REQUIREMENT.

3. THE CONCRETE AND REBAR SPECIFICATIONS SHOWN ARE FOR A NATIONWIDE RANGE OF CONDITIONS AND MAY NEED MODIFICATION FOR LOCAL CONDITIONS. EMERY WINSLOW SCALE WILL NOT BE RESPONSIBLE FOR ANY CHANGES NECESSITATED BY ANY REGULATORY AUTHORITIES OR LOCAL SITE CONDITIONS.

4. APPROACH COPING (BULKHEAD) TO BE ON A COMMON PLANE WITHIN 1/4".

5. TOP OF REBAR MUST BE PLACED TO CLEAR ANCHOR BOLTS. ANCHOR BOLTS ARE TO BE INSTALLED AFTER FOUNDATION HAS CURED.

6. PIERS MUST BE INSTALLED WITH EXTREME CARE AND MUST NOT BE ALLOWED TO SHIFT.

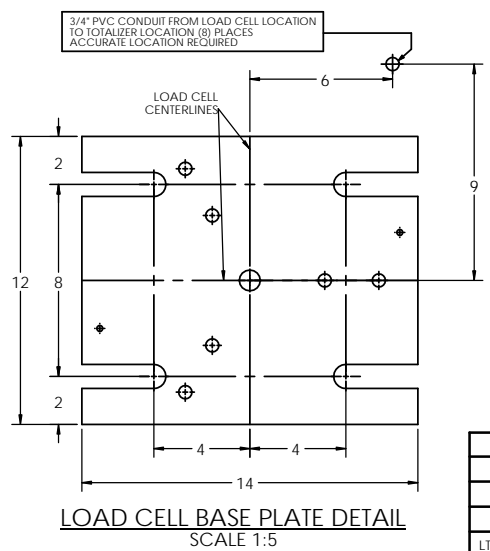
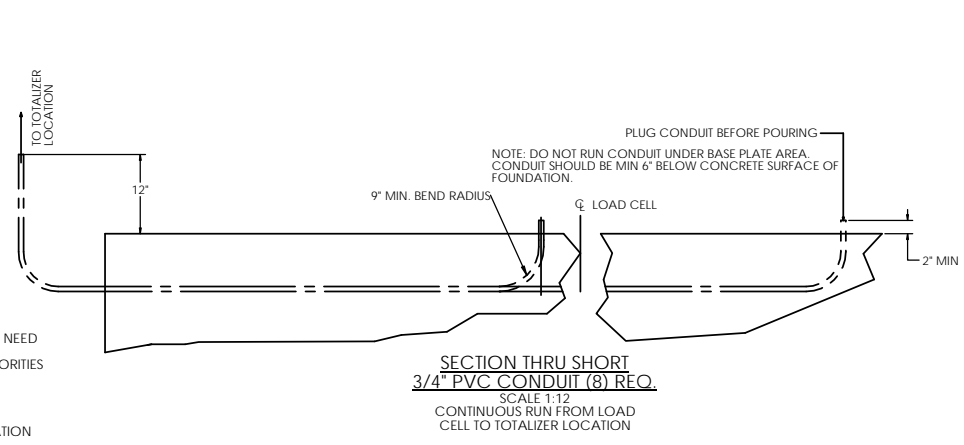
7. THESE PLANS ARE NOT SUITABLE WHERE SOIL MIGRATION IN AN ISSUE. SOIL MUST BE STABLE AND NOT SUBJECT TO FLOODING OR OTHER POSSIBLE CAUSES OF SOIL MIGRATION THAT MAY RESULT IN SHIFTING OF THE PIERS.

8. BASE PLATES ARE NOT GROUTED. IF GROUTING IS REQUIRED ADD GROUT THICKNESS TO APPROACH DEPTH SHOWN.

9. THERE ARE (2) ANCHOR BOLTS PER BASE PLATE. THEY SHOULD BE PLACED DIAGONALLY FROM EACH OTHER.

△ APPROACH THICKNESS MAY BE 10" MINIMUM WHERE ALLOWED BY STATE REGULATIONS

11. REFER TO ASSEMBLY DRAWING FOR BASE PLATE ORIENTATION.

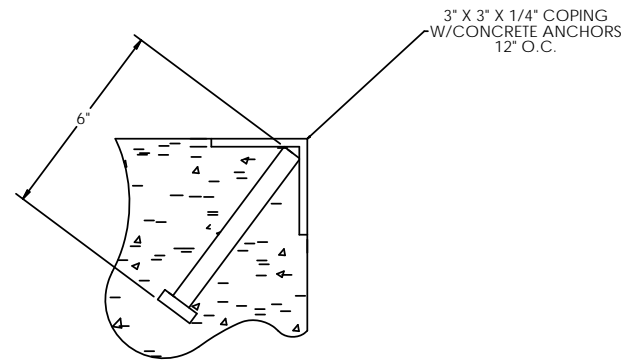


LTR		DATE	BY	ALL SHARP CORNERS AND EDGES TO BE BROKEN	EMERY WINSLOW SCALE COMPANY SEYMOUR, CT. U.S.A. TERRE HAUTE, IN.
THIS DRAWING IS THE PROPERTY OF EMERY WINSLOW SCALE COMPANY SEYMOUR, CONNECTICUT. THE INFORMATION CONTAINED HEREIN IS CONFIDENTIAL AND IS NOT TO BE USED OR DISSEMINATED TO OTHERS WITHOUT THE EXPRESS WRITTEN CONSENT OF EMERY WINSLOW SCALE COMPANY.		CHECKED:	DATE:	UNLESS OTHERWISE SPECIFIED DIMENSIONS ARE IN INCHES MACHINING FABRICATION XX: ±.01 XXX: ±.005	FOUNDATION, CONCRETE SLAB 60' X 11', STEEL DECK
DRAWN: S JOHNSON		DATE: 07/22/2019		SCALE	FIRST USED ON
ACAD FILENAME:		LAYERS USED:		1:60	DRAWING NO. 196528
				REV. A	

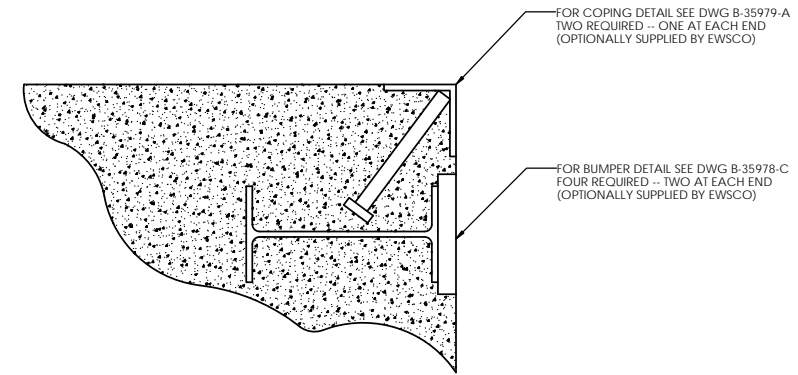
CONCRETE SCHEDULE			
	VOLUME (CUBIC YARDS)		
APPROACHES	9.4		
FLOOR	27.0		
TOTAL	36.4		
MISC. STEEL			
PIT COPING	3 X 3 X 1/4	23 LN. FT	113 LBS

CONCRETE LAYOUT

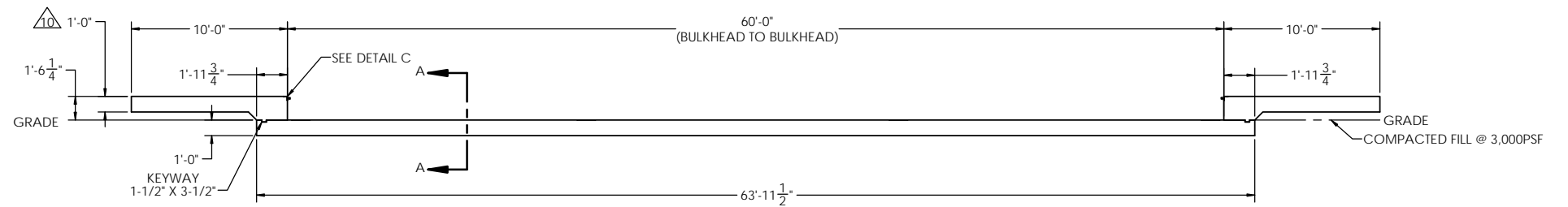
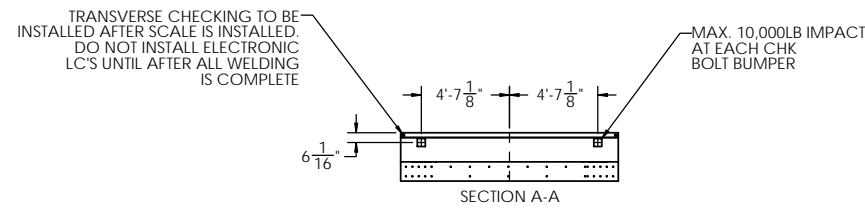
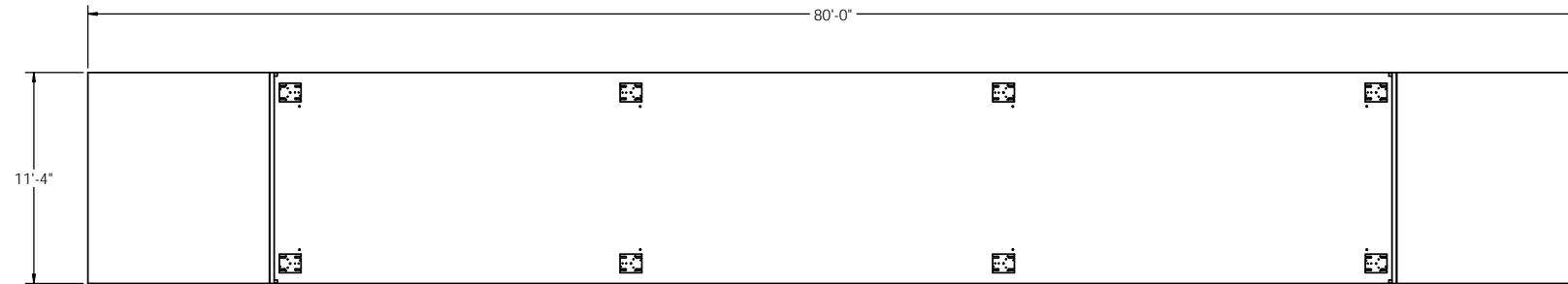
PRELIMINARY NOT FOR CONSTRUCTION FOR ILLUSTRATION ONLY



DETAIL C



DETAIL OF BULKHEAD INSTALLATION
NO SCALE



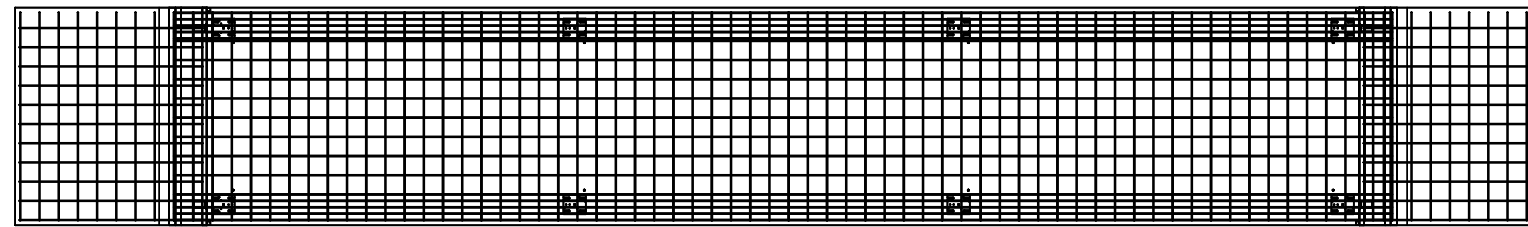
LTR		DATE	BY	ALL SHARP CORNERS AND EDGES TO BE BROKEN UNLESS OTHERWISE SPECIFIED DIMENSIONS ARE IN INCHES MACHINING FABRICATION XX: ±.01 XXX: ±.005	EMERY WINSLOW SCALE COMPANY <small>SEYMOUR, CT. U.S.A. TERRE HAUTE, IN.</small>
THIS DRAWING IS THE PROPERTY OF EMERY WINSLOW SCALE COMPANY SEYMOUR, CONNECTICUT. THE INFORMATION CONTAINED HEREIN IS CONFIDENTIAL AND IS NOT TO BE USED OR DISSEMINATED TO OTHERS WITHOUT THE EXPRESS WRITTEN CONSENT OF EMERY WINSLOW SCALE COMPANY.					

MATERIAL REQUIREMENTS

REBAR SCHEDULE				
BAL. NO.	QUANTITY	LENGTH (FT.-IN.)	DESCRIPTION	WEIGHT
A	22	9' 6"	# 4 @ 12 O.C.	140
B	20	10' 10"	# 4 @ 12 O.C.	145
C	22	1' 9 1/4"	# 4 @ 12 O.C.	26
D	32	63' 5 1/2"	# 4 AS SHOWN	1356
E	99	10' 10"	# 4 AS SHOWN	716
TOTAL WEIGHT OF REBAR (LBS.)				2383
TOTAL LENGTH OF REBAR (FT.)				3568

REBAR LAYOUT

PRELIMINARY NOT FOR
CONSTRUCTION FOR
ILLUSTRATION ONLY

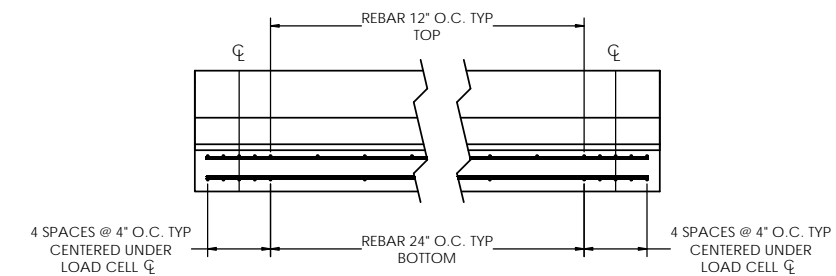
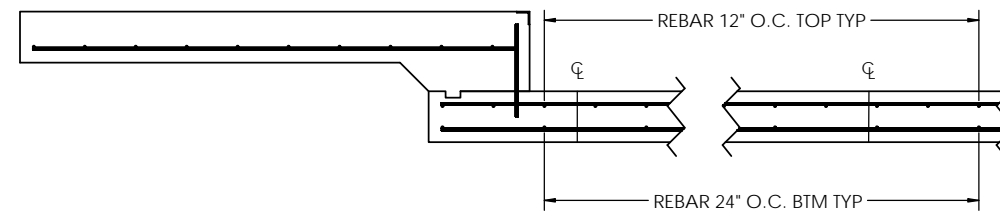
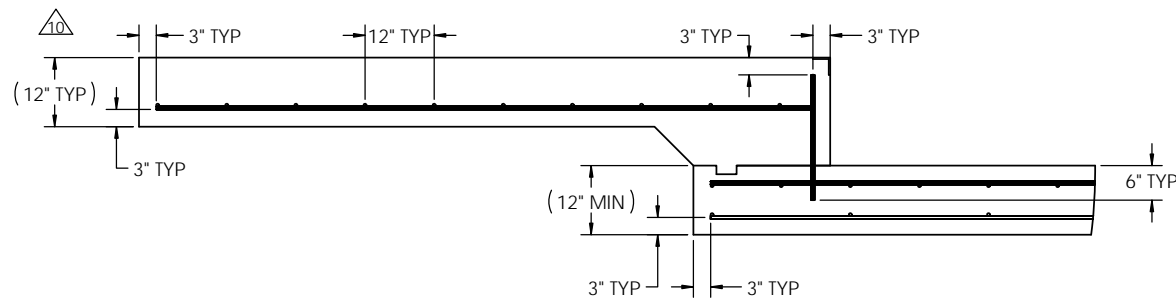


APPROACH STANDARD VIEW

REBAR SPACING LENGTH

REBAR SPACING WIDTH

NOTES: 1) LEFT AND RIGHT APPROACHES ARE MIRROR IMAGES OF EACH OTHER AND CONTAIN AN IDENTICAL PART LIST



LTR		DATE	BY	ALL SHARP CORNERS AND EDGES TO BE BROKEN	EMERY WINSLOW SCALE COMPANY SEYMOUR, CT. U.S.A. TERRE HAUTE, IN.
THIS DRAWING IS THE PROPERTY OF EMERY WINSLOW SCALE COMPANY SEYMOUR, CONNECTICUT. THE INFORMATION CONTAINED HEREIN IS CONFIDENTIAL AND IS NOT TO BE USED OR DISSEMINATED TO OTHERS WITHOUT THE EXPRESS WRITTEN CONSENT OF EMERY WINSLOW SCALE COMPANY.		DATE	BY	UNLESS OTHERWISE SPECIFIED DIMENSIONS ARE IN INCHES MACHINING FABRICATION XX: ±.01 XXX: ±.005	
DRAWN: S. JOHNSON		DATE: 07/22/2019		FOUNDATION, CONCRETE SLAB 60' X 11', STEEL DECK	
CHECKED:		DATE:		SCALE	FIRST USED ON
ACAD FILENAME:		LAYERS USED:		1:192	DRAWING NO.
					196528
					REV. A