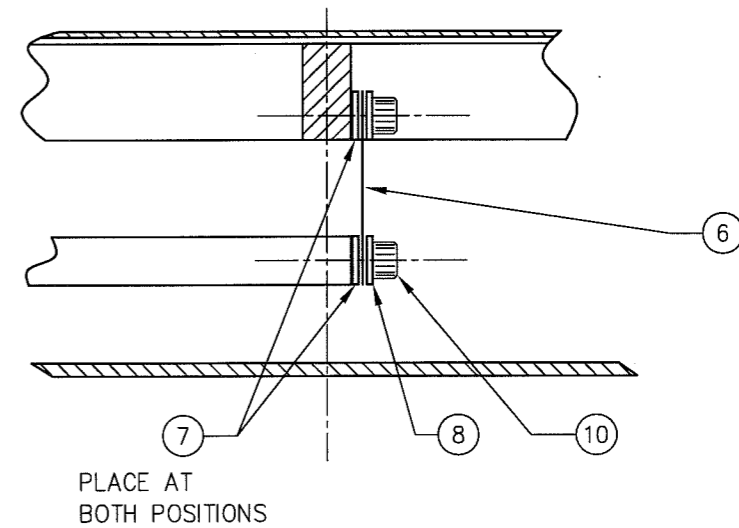
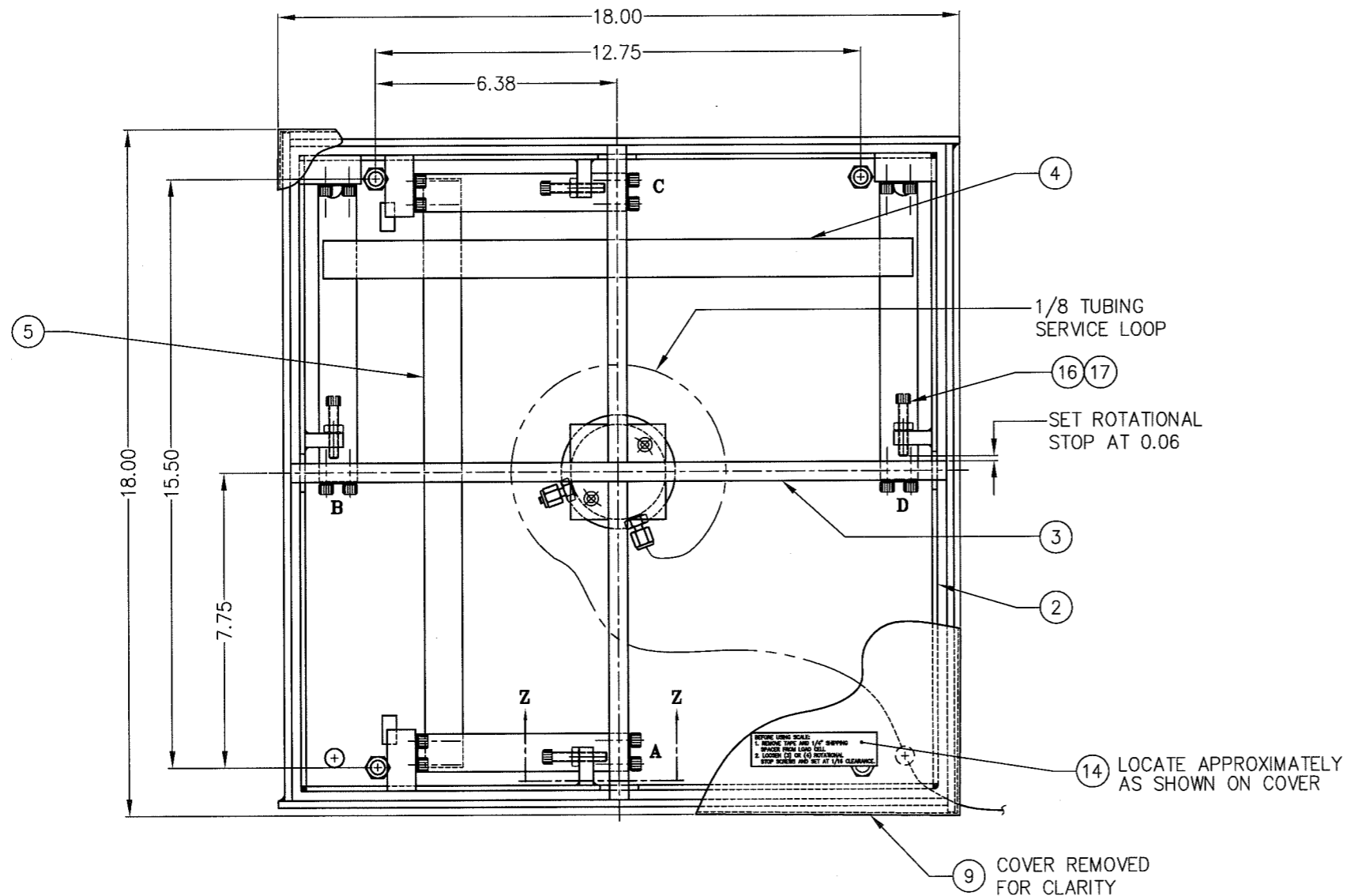


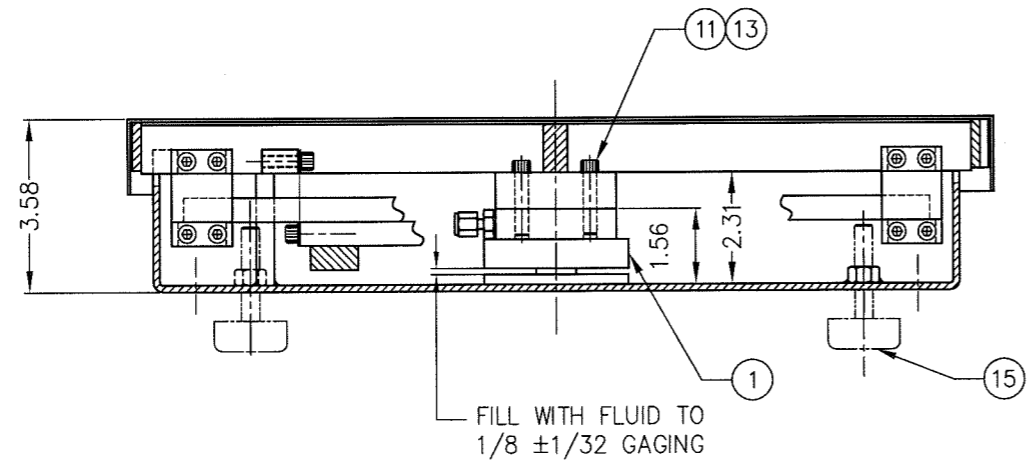
| SCALE CAPACITY (lb) | LOAD CELL (ITEM 14)             | WHEN SPECIFIED FOOT (ITEM 15) | ITEM NO. | DESCRIPTION        | QTY | MATERIAL | UNIT WT. | PART NO.            | SIZE      | WT. |
|---------------------|---------------------------------|-------------------------------|----------|--------------------|-----|----------|----------|---------------------|-----------|-----|
| 30/60 X 0.01        | 102SD-0.2 0.691 IN SQ (B-35307) | A-34073-2                     | 1        | LOAD CELL          | 1   | SS/D     |          | SEE TABLE           |           |     |
| 150/200 X 0.05      | 102SD-0.2 1.00 IN SQ (B-35285)  | A-34073-2                     | 2        | BASE PAN WELDMENT  | 1   | SS304    |          | B-33275-1           |           |     |
|                     |                                 |                               | 3        | TOP FRAME WELDMENT | 1   | SS304    |          | B-33293             |           |     |
|                     |                                 |                               | 4        | TORQUE ARM, LONG   | 1   | SS304    |          | B-33296             |           |     |
|                     |                                 |                               | 5        | TORQUE ARM, SHORT  | 1   | SS304    |          | B-33295             |           |     |
|                     |                                 |                               | 6        | FLEXURE            | 8   | SS302    |          | A-33218-2           | 0.020 THK |     |
|                     |                                 |                               | 7        | SHIM               | A/R | SS302    |          | A-33339-1           | 0.007 THK |     |
|                     |                                 |                               | 8        | CLAMP              | 16  | SS304    |          | A-33383             |           |     |
|                     |                                 |                               | 9        | COVER              | 1   | SS304    |          | B-28114-14          |           |     |
|                     |                                 |                               | 10       | SCREW SOCKET HD    | 32  | SS304    |          | 0.250-28 UNF X 0.38 |           |     |
|                     |                                 |                               | 11       | SCREW SOCKET HD    | 2   | SS304    |          | 0.250-20 UNC X 1.25 |           |     |
|                     |                                 |                               | 12       |                    |     |          |          |                     |           |     |
|                     |                                 |                               | 13       | WASHER, FLAT       | 2   | SS304    |          | 0.25                |           |     |
|                     |                                 |                               | 14       | LABEL              | 1   |          |          | A-33585             |           |     |
|                     |                                 |                               | 15       | FOOT               | 4   |          |          | A-34073-2           |           |     |
|                     |                                 |                               | 16       | SHCS               | 4   |          |          | 0.312-18 UNC X 1.50 |           |     |
|                     |                                 |                               | 17       | HEX NUT            | 4   |          |          | 0.312-18 UNC        |           |     |



FOR CORNER CALIBRATION, SHIM ENDS **A, B, C, or D.** ADD SHIMS TO THE LOW WEIGHT READING SIDE(S) BETWEEN FLEXURE AND MOUNTING SURFACE.

**SECTION Z-Z**

**Preliminary  
Not for Construction  
For Illustration Only**



|  |                                  |          |     |   |   |   |
|--|----------------------------------|----------|-----|---|---|---|
| D  | ITEMS 16 & 17 ADDED              | 2/18/04  | CBM | ALL SHARP CORNERS AND EDGES TO BE BROKEN  | EMERY WINSLOW SCALE COMPANY<br>SEYMOUR, CT U.S.A TERRE HAUTE, IN. |   |
| C  | ITEM 15 ADDED - CHART REVISED    | 11/28/01 | CBM |   |   |   |
| B  | CAD REDRAWN, WAS 1/2 SIZE        | 03/01    | JDS |   |   |   |
| A  | LOAD CELL INVERTED FOR 0.0002 lb |          |     |   |   |   |
| REV  | DESCRIPTION                      | DATE     | BY  | DRAWN: JDS DATE: 3/10/01                  | BENCH SCALE ASSEMBLY<br>437-1818-200                              |   |
| THIS DRAWING IS THE PROPERTY OF EMERY WINSLOW SCALE COMPANY SEYMOUR, CONNECTICUT. THE INFORMATION CONTAINED HEREIN IS CONFIDENTIAL AND IS NOT TO BE USED OR DISSEMINATED TO OTHERS WITHOUT THE EXPRESS WRITTEN CONSENT OF EMERY WINSLOW SCALE COMPANY. |                                  |          |     | CHECKED: DATE:                            |   | SCALE 1:4                                 |
|  |                                  |          |     | ACAD FILENAME: AC00839 LAYERS USED: 05,16 |   | FIRST USED ON DRAWING NO. B-33386-1 REV D |