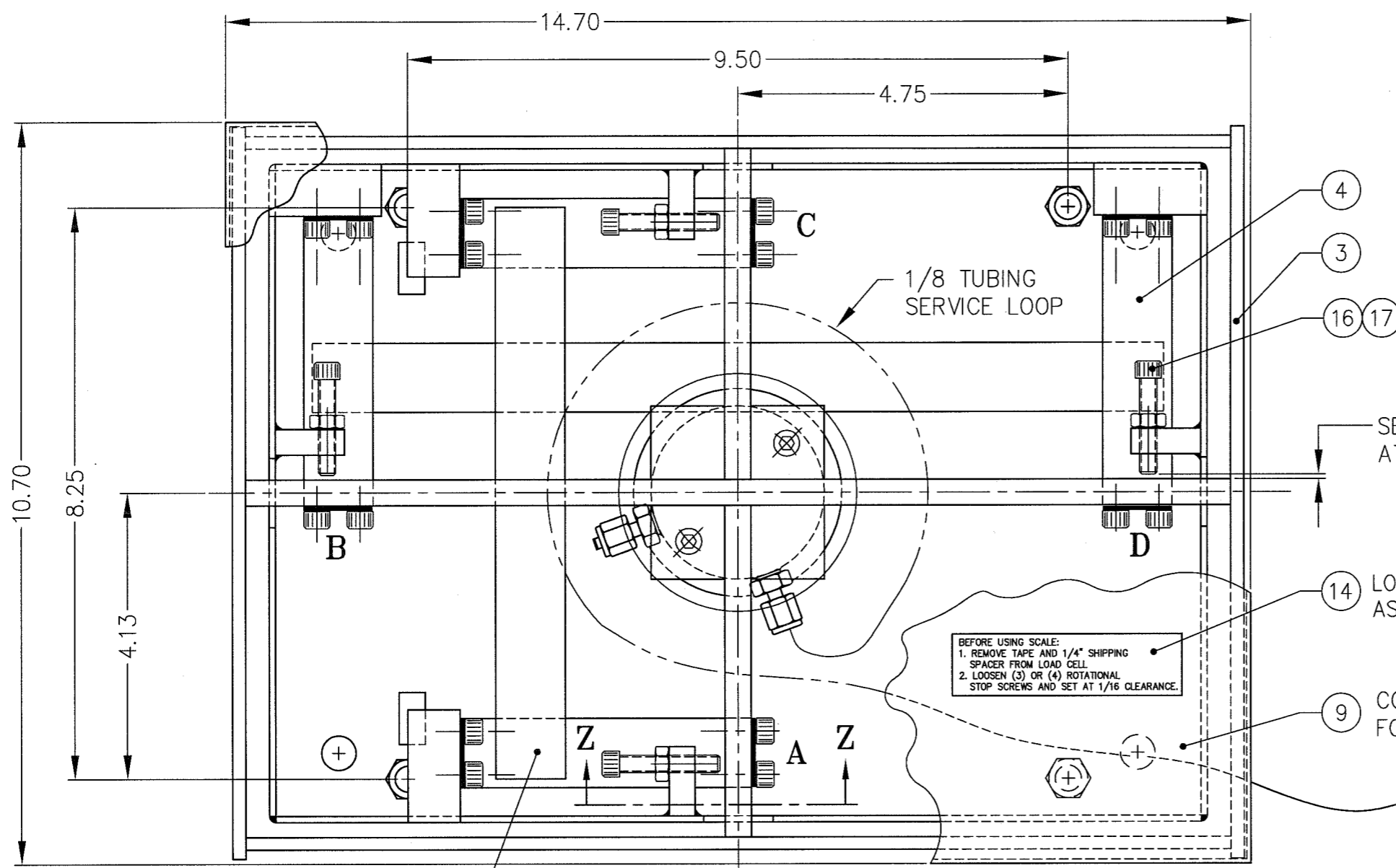


SCALE CAPACITY (lb)	LOAD CELL MODEL	DRAWING NUMBER	ITEM NO.	DESCRIPTION	QTY	MATERIAL	UNIT WT.	PART NO.	SIZE	WT.
10 X 0.005	102SD-0.2	B-35307	1	LOAD CELL	1	SS/D		SEE CHART		
30/80 X 0.01	0.691 in sq		2	BASE PAN WELDMENT	1	SS304		B-33244		
100 X 0.02			3	TOP FRAME WELDMENT	1	SS304		B-33317-1		
			4	TORQUE ARM, LONG	1	SS304		B-33215		
			5	TORQUE ARM, SHORT	1	SS304		B-33216		
			6	FLEXURE	8	SS302		A-33218-1	0.015 THK	
			7	SHIM	A/R	SS302		A-33339-1	0.007 THK	
			8	CLAMP	16	SS304		A-33383		
			9	COVER	1	SS304		B-28114-16		
			10	SCREW SOCKET HD	32	SS304		0.250-28 UNF X 0.38		
			11	SCREW SOCKET HD	2	SS304		0.250-20 UNC X 1.25		
			12							
			13	WASHER, FLAT	2	SS304		0.25		
			14	LABEL	1			A-33585		
			15	FOOT	4			A-34073-2		
			16	HHCS	4			0.312-18 UNC X 1.50		
			17	HEX NUT	4			0.312-18 UNC		

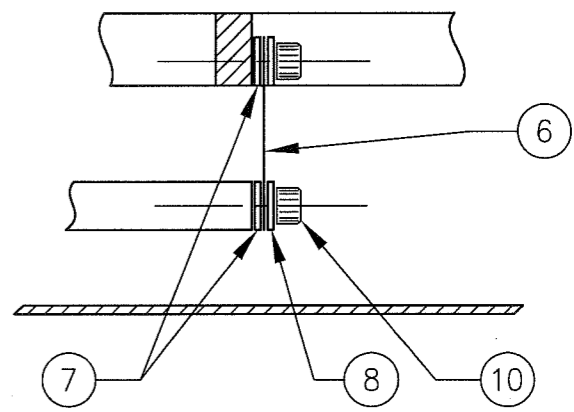


Preliminary
Not for Construction
For Illustration Only

SET ROTATIONAL STOP AT 0.06

14 LOCATE APPROXIMATELY AS SHOWN ON COVER

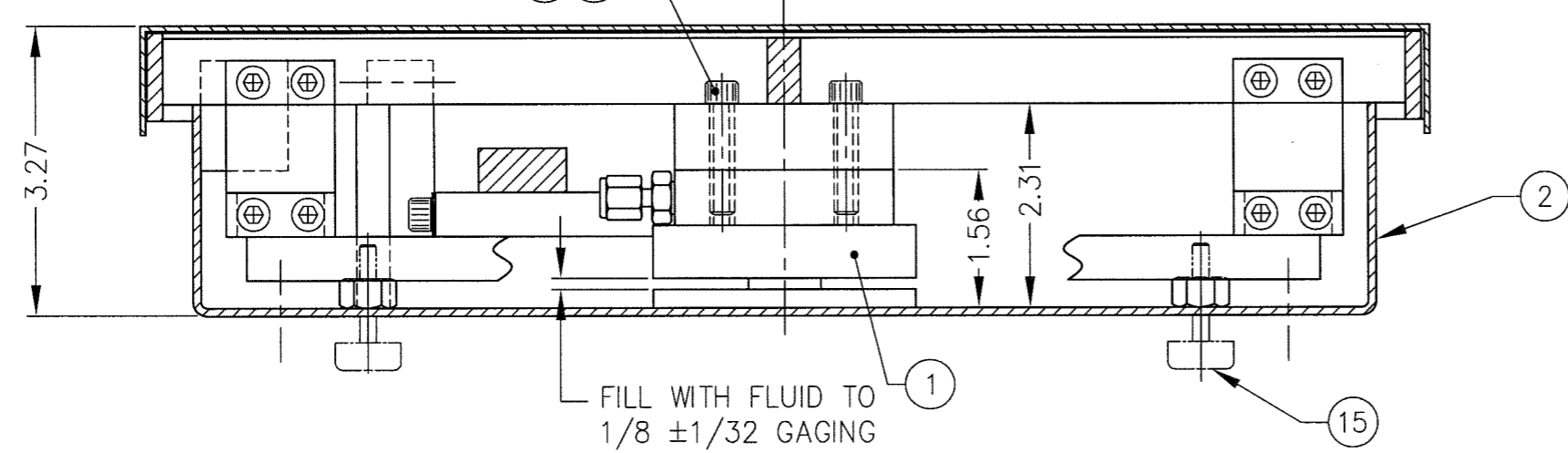
9 COVER REMOVED FOR CLARITY



PLACE AT BOTH POSITIONS

FOR CORNER CALIBRATION, SHIM ENDS **A, B, C, or D**. ADD SHIMS TO THE LOW WEIGHT READING SIDE(S) BETWEEN FLEXURE AND MOUNTING SURFACE.

SECTION Z-Z



H	ITEMS 16 & 17 ADDED	2/18/04	CBM	ALL SHARP CORNERS AND EDGES TO BE BROKEN	EMERY WINSLOW SCALE COMPANY SEYMOUR, CT U.S.A. TERRE HAUTE, IN.
G	ITEM 15 ADDED - CHART REVISED	11/29/01	CBM	DIMENSIONS ARE IN INCHES. TOLERANCES UNLESS SPECIFIED OTHERWISE: MACHINING .XX = .01 .XXX = .005 ± .13 FABRICATION ± .13	
F	CAD REDRAWN WAS TO SIZE LOAD CELL INVERTED FOR 0.002 lb	02/01	JDS	THIS DRAWING IS THE PROPERTY OF EMERY WINSLOW SCALE COMPANY SEYMOUR, CONNECTICUT. THE INFORMATION CONTAINED HEREIN IS CONFIDENTIAL AND IS NOT TO BE USED OR DISSEMINATED TO OTHERS WITHOUT THE EXPRESS WRITTEN CONSENT OF EMERY WINSLOW SCALE COMPANY.	BENCH SCALE ASSEMBLY 437-1014-100
REV	DESCRIPTION	DATE	BY	DRAWN: JDS DATE: 02/08/01 CHECKED: DATE: ACAD FILENAME: AC00828 LAYERS USED: 1,16,18	
					SCALE: 1:2
					FIRST USED ON: DRAWING NO. B-33388-1
					REV H