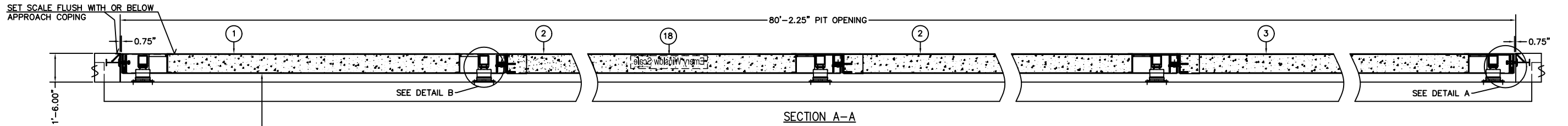
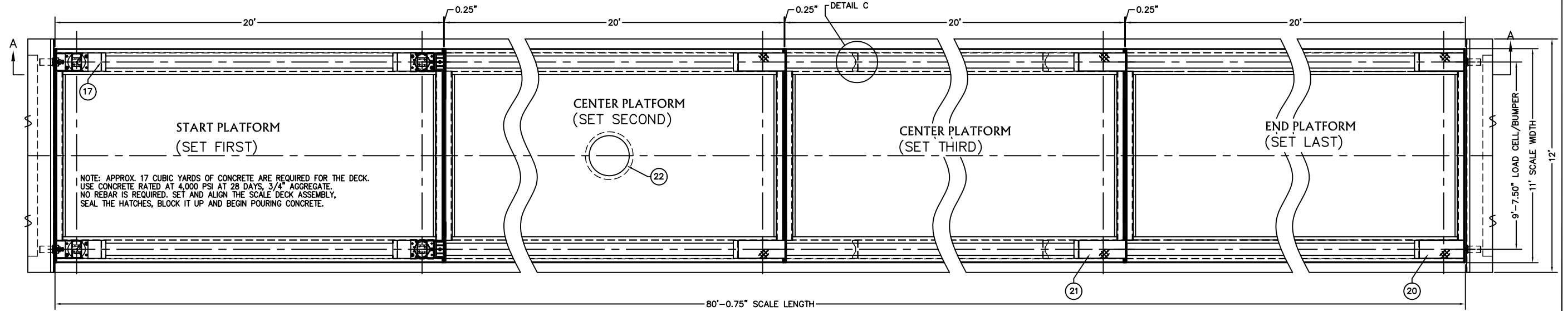


**PRELIMINARY NOT FOR CONSTRUCTION. FOR ILLUSTRATION ONLY.**

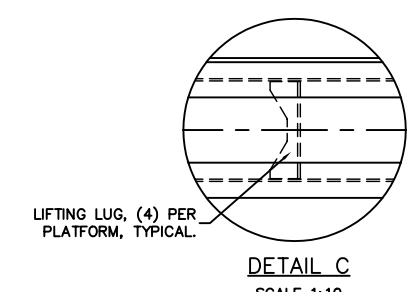
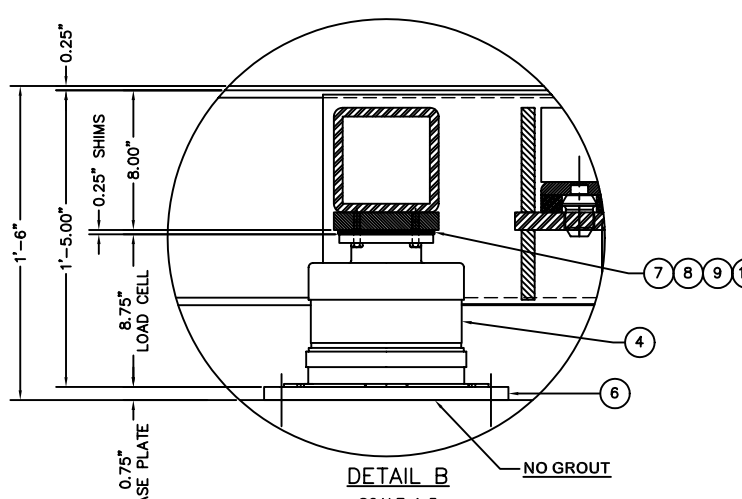
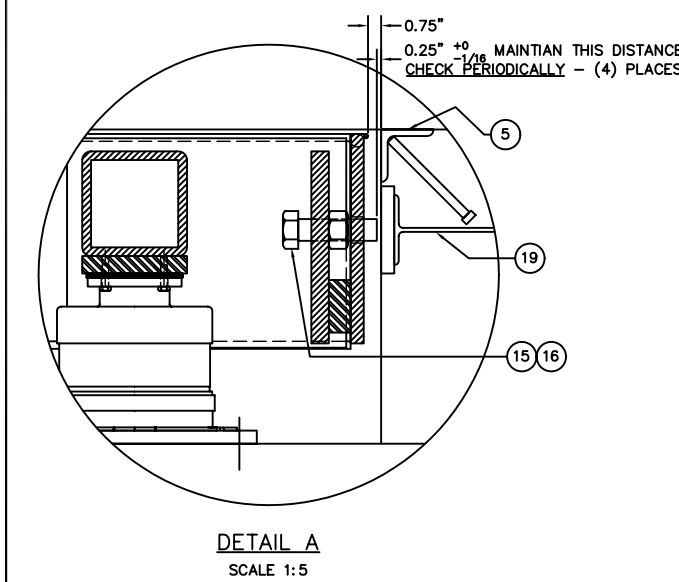
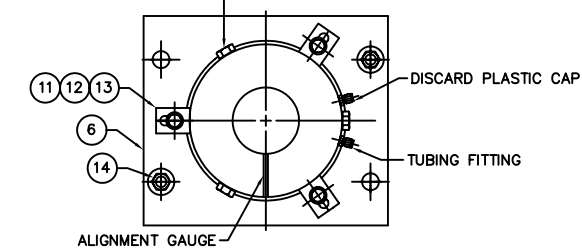
ITEM NO.	DESCRIPTION	QTY	MATERIAL	UNIT WT.	PART NO.	SIZE	WT.	ITEM NO.	DESCRIPTION	QTY	MATERIAL	UNIT WT.	PART NO.	SIZE	WT.
1	START PLATFORM	1	SEE ASS'Y	TBD	TBD		TBD	12	HHCS	30	SS	-		0.50-13UNC X 1.25	-
2	CTR PLATFORM	2	SEE ASS'Y	TBD	TBD		TBD	13	MS FLAT WASHER	30	SS	-		FOR 0.5000, ONE PER CLAMP	-
3	END PLATFORM	1	SEE ASS'Y	TBD	TBD		TBD	14	ANCHOR BOLT	20	ASTM A36	-	#6954	0.750 X 5.25 RAWL-POWER OR EQ.	-
4	LOAD CELL	10	SEE ASS'Y	63.00	D-29547-2	136-75-CH; NTEP NP. 88-239-P	630	15	HHCS	4	GR. 8	-		1.25-7UNC X 4.50 FULL THREAD, ZN PL	-
5	APPROACH COPING	2	SEE ASS'Y	91.00	B-36115-A	OPTIONALLY SUPPLIED BY EWSCO	182	16	TRI-LOCK NUT	4	GR. 2H	-		1.25-7UNC, ZN PL	-
6	BASE PLATE	10	ASTM A36	35.70	B-35931-D		357	17	SERIAL NUMBER PLATE	1	SS	-	B-34821-D		-
7	CENTERING RING	10	A/R	1.50	B-29871-E		15	18	EWSCO DECAL	2	-	-	A-35412-A	8.00 X 48.00	-
8	SHIM	30	SS	0.50	A-29869-1-D	0.06 THICK	15	19	CHECK BOLT BUMPER	4	SEE ASS'Y	10.00	B-35978-C	OPTIONALLY SUPPLIED BY EWSCO	40
9	SHIM	20	SS	0.30	A-29869-2-D	0.03 THICK	6	20	END COVER PLATE	5	ASTM A36	51	B-72985		255
10	HHCS	40	SS	-	-	0.375-13UNC X 1.25	-	21	CENTER COVER PLATE	5	ASTM A36	54	B-72986		270
11	CLAMP	30	CS, ZN PL	-	A-29870-2-B		-	22	*MANHOLE	A/R	ASTM A36	-	B-71041	OPTIONALLY SUPPLIED BY EWSCO	-

\*REQUIRES A SPECIALLY REINFORCED PLATFORM TO ACCEPT A MANHOLE.



SHORE UP DECK AT MID-SPAN UNTIL CONCRETE CURES. USE HARDWOOD BLOCKS UNDERNEATH THE OUTSIDE WIDE FLANGE BEAMS, EIGHT (8) BLOCKS REQUIRED, APPROXIMATELY 16\"/>

GAUGING PLUG: REMOVE TO GAUGE TO 0.030\"/>



**ATTENTION:**  
SEE NOTE 1 ON INSTALLATION  
DRAWING # D-72974

FOR NON COMMERCIAL SCALES PROVIDE AN APPROACH OF 2 FEET MINIMUM LENGTH WHICH IS LEVEL AND IN SAME PLANE AS THE PLATFORM.  
FOR COMMERCIAL SCALES CHECK WITH LOCAL WEIGHTS AND MEASURES OFFICIALS BEFORE STARTING CONSTRUCTIONS.  
NATIONAL INSTITUTE OF STANDARDS AND TECHNOLOGY (NIST) HANDBOOK 44 REQUIRES:  
A) A STRAIGHT APPROACH OF AT LEAST ONE-HALF THE LENGTH OF THE PLATFORM.  
B) NOT LESS THAN 10 FEET OF APPROACH ADJACENT TO THE PLATFORM TO BE CONSTRUCTED OF CONCRETE OR SIMILAR DURABLE MATERIAL AND BE LEVEL AND IN THE SAME PLANE AS THE PLATFORM.

NOTE: 17 CUBIC YARDS OF CONCRETE ARE REQUIRED FOR THE DECK.  
DRAWING REFERENCES:  
D-73076 SLAB FOUNDATION  
D-73077 ALTERNATE FOUNDATION  
D-72974 INSTALLATION INSTRUCTIONS  
B-33069-3-G 5 SECTION TUBING DIAGRAM  
NTEP NO. 89-185PA3  
CLC = 58,000 LB CLASS III

ALL SHARP CORNERS AND EDGES TO BE BROKEN				EMERY WINSLOW SCALE COMPANY SEYMOUR, CT U.S.A. TERRE HAUTE, IN.			
UNLESS OTHERWISE SPECIFIED DIMENSIONS ARE IN INCHES				MODEL H85-10080-11CD-TA 80' X 11', 100 TON; ROADWEIGH II AG OUTLINE ARRANGEMENT			
A	DETAIL 'C' ADDED	09/09	GEM	MACHINING	FABRICATION	SCALE	1:30
LTR	REVISION	DATE	BY	DATE	DATE	DRAWING NO.	D-73075
THIS DRAWING IS THE PROPERTY OF EMERY WINSLOW SCALE COMPANY, SEYMOUR, CONNECTICUT. THE INFORMATION CONTAINED HEREIN IS CONFIDENTIAL AND IS NOT TO BE USED OR DISSEMINATED TO OTHERS WITHOUT THE EXPRESS WRITTEN CONSENT OF EMERY WINSLOW SCALE COMPANY.				SCALE FIRST USED ON DRAWING NO. REV. A			