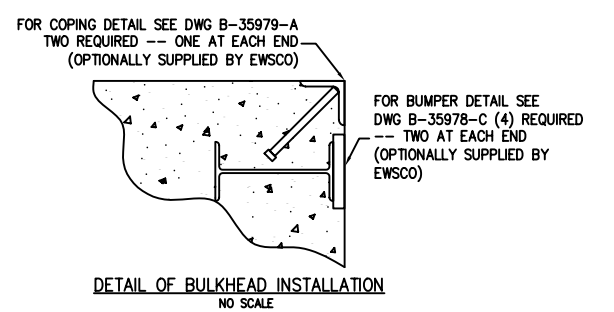
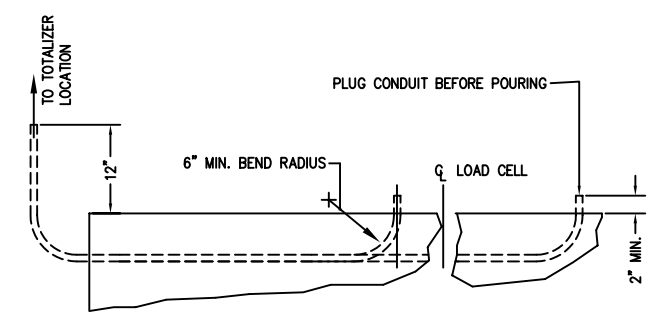
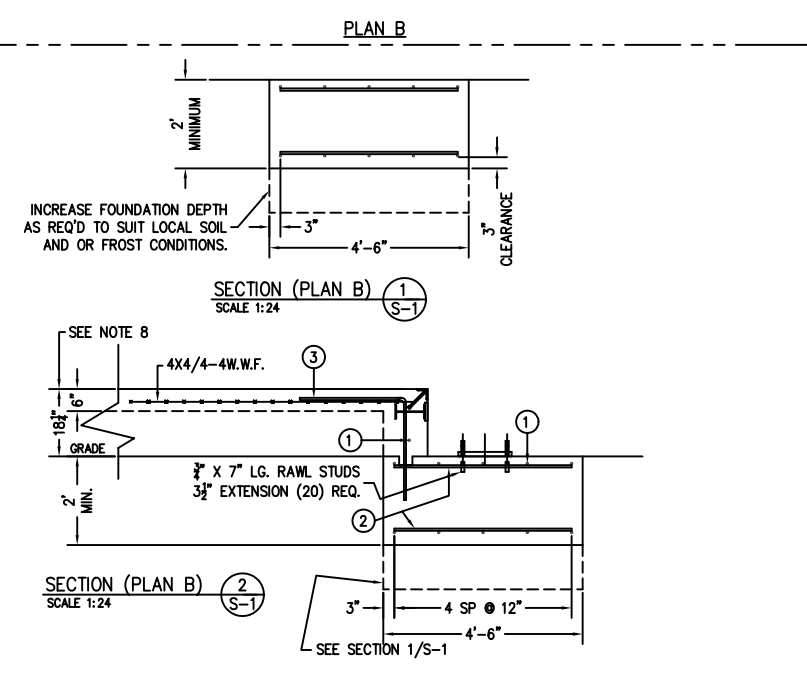
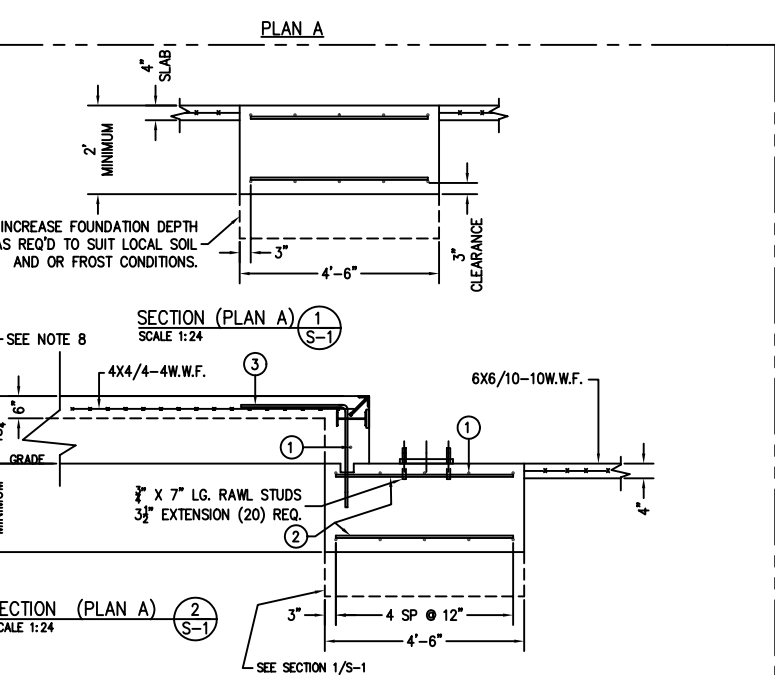
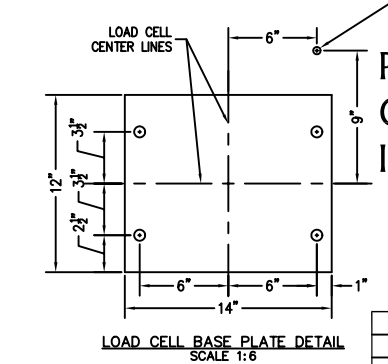


PRELIMINARY NOT FOR CONSTRUCTION. FOR ILLUSTRATION ONLY.

PRELIMINARY NOT FOR CONSTRUCTION. FOR ILLUSTRATION ONLY.



1/2" PVC CONDUIT FROM LOAD CELL LOCATION TO TOTALIZER LOCATION (10) PLACES ACCURATE LOCATION REQUIRED.



PRELIMINARY NOT FOR CONSTRUCTION. FOR ILLUSTRATION ONLY.

FOR NON COMMERCIAL SCALES PROVIDE AN APPROACH OF 2 FEET MINIMUM LENGTH WHICH IS LEVEL AND IN SAME PLANE AS THE PLATFORM.  
 FOR COMMERCIAL SCALES CHECK WITH LOCAL WEIGHTS AND MEASURES OFFICIALS BEFORE STARTING CONSTRUCTIONS. NATIONAL INSTITUTE OF STANDARDS AND TECHNOLOGY (NIST) HANDBOOK H44 REQUIRES:  
 A.) A STRAIGHT APPROACH OF AT LEAST ONE-HALF THE LENGTH OF THE PLATFORM.  
 B.) NOT LESS THAN 10 FEET OF APPROACH ADJACENT TO THE PLATFORM TO BE CONSTRUCTED OF CONCRETE OR SIMILAR DURABLE MATERIAL AND BE LEVEL AND IN THE SAME PLANE AS THE PLATFORM.

- NOTES:
1. CONCRETE STRENGTH:  $f'_c = 4,000$  PSI @ 28 DAYS  
REINFORCING ROD:  $F_y = 60,000$  PSI, ASTM A615, GRADE 60
  2. PIERS AS SHOWN ARE SIZED FOR 3,000 LB/SQ.FT.
  3. THE CONCRETE AND REBAR SPECIFICATIONS SHOWN ARE FOR A NATIONWIDE RANGE OF CONDITIONS AND MAY NEED MODIFICATION FOR LOCAL CONDITIONS.
  4. APPROACH COPING(BULKHEAD) TO BE ON A COMMON PLANE WITHIN 1/4".
  5. TOP OF REBAR MUST BE PLACED TO CLEAR THE ANCHOR BOLTS. ANCHOR BOLTS ARE TO BE INSTALLED AFTER FOUNDATION HAS CURED.
  6. PIERS MUST BE INSTALLED WITH EXTREME CARE AND MUST NOT BE ALLOWED TO SHIFT.
  7. THESE PLANS ARE NOT SUITABLE WHERE SOIL MIGRATION IS AN ISSUE. SOIL MUST BE STABLE AND NOT SUBJECT TO FLOODING OR OTHER POSSIBLE CAUSES OF SOIL MIGRATION THAT MAY RESULT IN SHIFTING OF THE PIERS.
  8. BASE PLATES ARE NOT GROUTED. IF GROUTING IS REQUIRED ADD GROUT THICKNESS TO APPROACH DEPTH SHOWN.

MATERIAL REQUIREMENTS		TOTAL WT. OF REBAR		1067	
<b>PLAN A:</b>					
CONCRETE:					
APPROACHES	6.4 CU. YDS				59
FOUNDATION 'A'	26 CU. YDS				417
REINFORCING:					591
REBAR 'A'	1067				
4X4/4-4WWF	220 SQ FT				
6X6/10-10WWF	631 SQ FT				
PIECE NO.	QTY	BAR SIZE	LENGTH & DESCRIPTION	WT.	
3	22	4	4'-0"	2'-0"	
2	100	5	4'-0"		
1	54	5	10'-6"		

MATERIAL REQUIREMENTS		TOTAL WT. OF REBAR		1067	
<b>PLAN B:</b>					
CONCRETE:					
APPROACHES	6.4 CU. YDS				59
FOUNDATION 'B'	19 CU. YDS				417
REINFORCING:					591
REBAR 'B'	1067				
4X4/4-4WWF	220 SQ FT				
PIECE NO.	QTY	BAR SIZE	LENGTH & DESCRIPTION	WT.	
3	22	4	4'-0"	2'-0"	
2	100	5	4'-0"		
1	54	5	10'-6"		

ALL SHARP CORNERS AND EDGES TO BE BROKEN  
 UNLESS OTHERWISE SPECIFIED DIMENSIONS ARE IN INCHES  
 MACHINING FABRICATION ±.13  
 ±.01 ±.01  
 ±.002 ±.006

EMERY WINSLOW SCALE COMPANY  
 SEYMOUR, CT U.S.A. TERRE HAUTE, IN.

ALTERNATE FOUNDATION FOR H85-10080-10-TA, 100 TON 80' X 10' MOTOR TRUCK SCALE

THIS DRAWING IS THE PROPERTY OF EMERY WINSLOW SCALE COMPANY SEYMOUR, CONNECTICUT. THE INFORMATION CONTAINED HEREIN IS CONFIDENTIAL AND IS NOT TO BE USED OR DISSEMINATED TO OTHERS WITHOUT THE EXPRESS WRITTEN CONSENT OF EMERY WINSLOW SCALE COMPANY.

REVISION DATE BY  
 CHECKED DATE  
 ACAD FILENAME: T02907  
 LAYERS USED: ALL

SCALE 1:36 FIRST USED ON DRAWING NO. 72764 REV.

FULL SCALE PLOT D-24X36