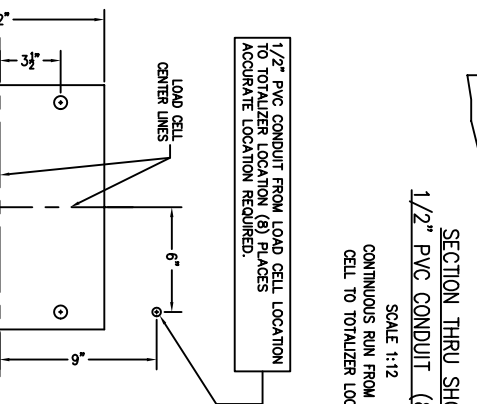
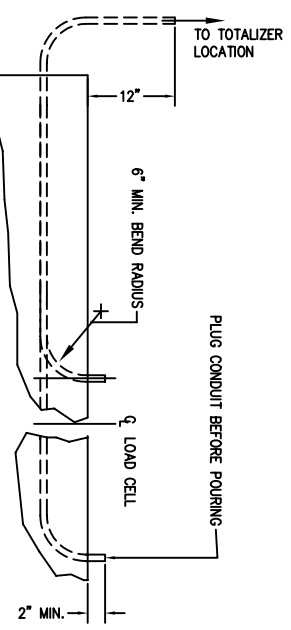


MATERIAL REQUIREMENTS		TOTAL WT. OF REBAR		
CONCRETE:	7 CU YD	4	4	5136
APPROACHES	32 CU YD	3	4	64
FOUNDATION	32 CU YD	4	5	48
REINFORCING:	5136 LB	2	5	2111
REBAR	240 SQ FT	1	76	2913
4X4/4-4W.W.F.		PIECE	BAR	WT.
		NO.	SIZE	LENGTH & DESCRIPTION



PRELIMINARY NOT FOR CONSTRUCTION. FOR ILLUSTRATION ONLY.

- FOR NON COMMERCIAL SCALES PROVIDE AN APPROACH OF 2 FEET MINIMUM LENGTH WHICH IS LEVEL AND IN SAME PLANE AS THE PLATFORM.
- FOR COMMERCIAL SCALES CHECK WITH LOCAL WEIGHTS AND MEASURES OFFICIALS BEFORE STARTING CONSTRUCTIONS.
- NATIONAL INSTITUTE OF STANDARDS AND TECHNOLOGY (NIST) HANDBOOK 44 REQUIRES:
- A) A STRAIGHT APPROACH OF AT LEAST ONE-HALF THE LENGTH OF THE PLATFORM.
 - B) NOT LESS THAN 10 FEET OF APPROACH ADJACENT TO THE PLATFORM TO BE CONSTRUCTED OF CONCRETE OR SIMILAR DURABLE MATERIAL AND BE LEVEL AND IN THE SAME PLANE AS THE PLATFORM.
- NOTES:
1. CONCRETE STRENGTH: 4,000 PSI @ 28 DAYS
 2. SOIL BEARING IS ASSUMED TO BE 2,000 LB/SQ FT. TO BE VERIFIED IN THE FIELD BY END USER.
 3. SLAB TO BE FLAT WITHIN 0.25" AND LEVEL WITHIN 0.13" PER 10 FT.
 4. APPROACH COPING (BULKHEAD) TO BE ON A COMMON PLANE WITHIN 0.25"
 5. TOP OF REBAR MUST BE PLACED TO CLEAR THE ANCHOR BOLTS.
 6. SEE SPEC. A499-364-2 FOR ON SITE SUBSURFACE CONDITIONS.
 7. THE LENGTH FOR REBAR NO. 1 IS MINIMUM FOR 76 PIECES LAPPED.
 8. LONGER LAPS AND/OR PIECES MAY BE USED. MINIMUM LAP IS 26".
 9. BASE PLATES ARE NOT GROUDED. IF GROUDED IS REQUIRED ADD GROUT THICKNESS TO APPROACH DEPTH SHOWN.

REVISION	DATE	BY	REASON

THIS DRAWING IS THE PROPERTY OF EMERY WINSLOW SCALE COMPANY. SEMI-DUR, CONNECTICUT. THE INFORMATION CONTAINED HEREIN IS CONFIDENTIAL AND IS NOT TO BE USED OR DISSEMINATED TO OTHERS WITHOUT THE EXPRESS WRITTEN CONSENT OF EMERY WINSLOW SCALE COMPANY.

EMERY WINSLOW SCALE COMPANY
100 TON, 70" X 11" WFTA M.I.S.
A.G. SLAB FOUNDATION

SCALE: FIRST USED ON DRAWING NO. D-73007