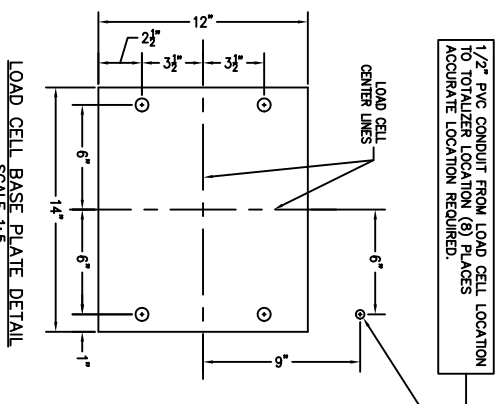
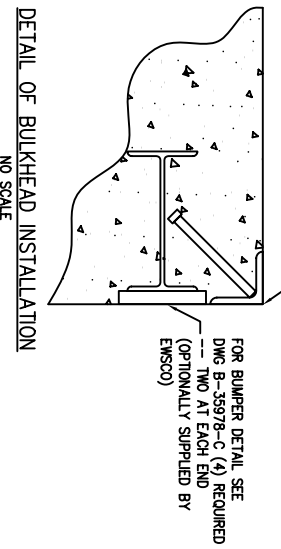
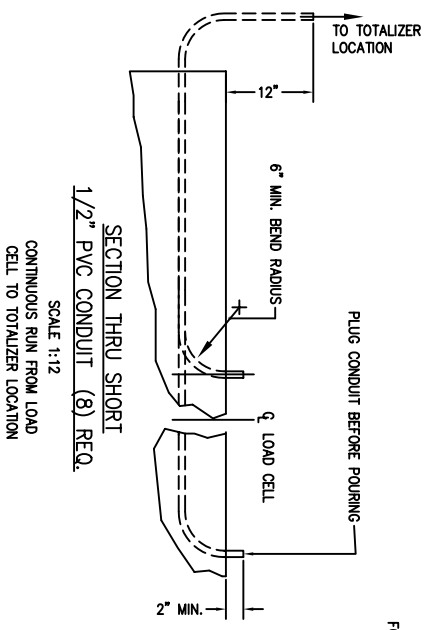
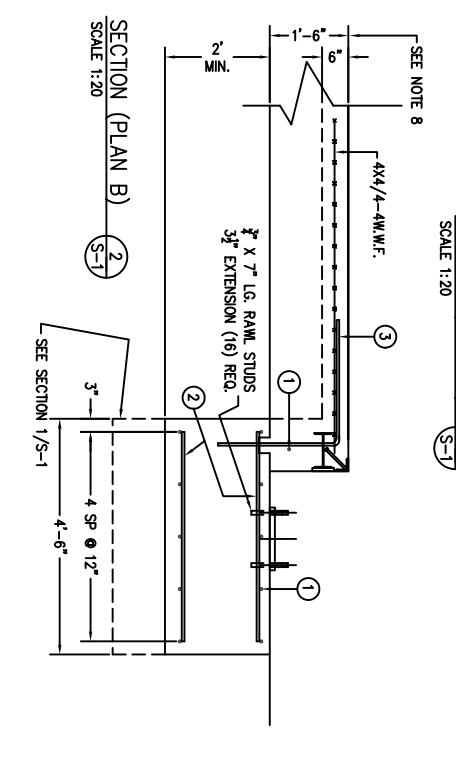
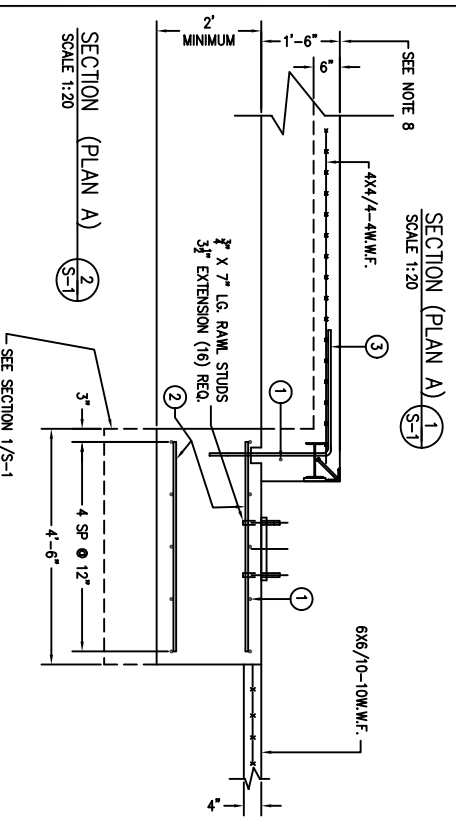
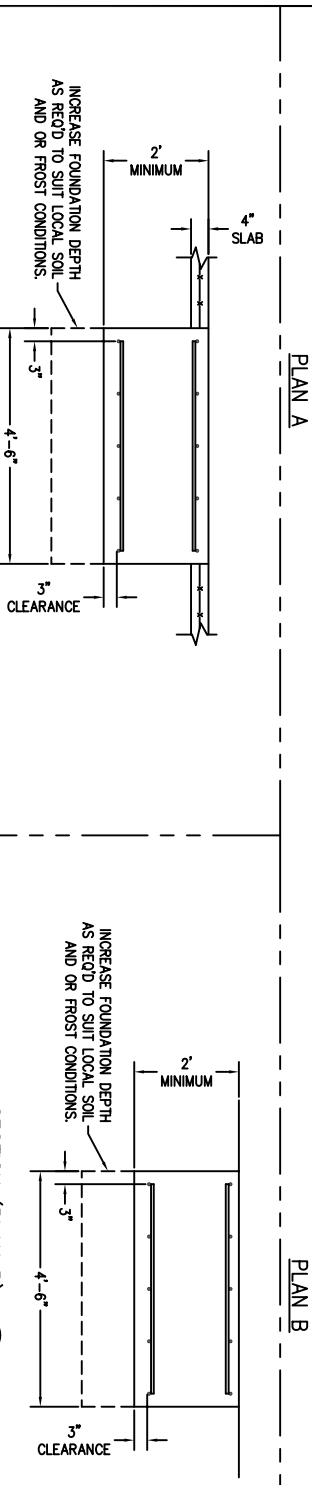


PRELIMINARY NOT FOR CONSTRUCTION. FOR ILLUSTRATION ONLY.



- NOTES:
1. CONCRETE STRENGTH: $f_c = 4,000$ PSF @ 28 DAYS
 2. REINFORCING ROD: $f_y = 60,000$ PSF, ASTM A615, GRADE 60
 3. PIERS AS SHOWN ARE SIZED FOR 3,000 SQ.FT.
 4. THE CONCRETE AND REBAR SPECIFICATIONS SHOWN ARE FOR A NATIONWIDE RANGE OF CONDITIONS AND MAY NEED MODIFICATION FOR LOCAL CONDITIONS.
 5. APPROACH COPING(BULKHEAD) TO BE ON A COMMON PLANE WITHIN 1/4\".
 6. TOP OF REBAR MUST BE PLACED TO CLEAR THE ANCHOR BOLTS.
 7. ANCHOR BOLTS ARE TO BE INSTALLED AFTER THE FOUNDATION HAS CURED.
 8. PIERS MUST BE INSTALLED WITH EXTREME CARE AND MUST NOT BE ALLOWED TO SHIFT.
 9. THESE PLANS ARE NOT SUITABLE WHERE SOIL MIGRATION IS AN ISSUE. SOIL MUST BE STABLE AND NOT SUBJECT TO FLOODING OR OTHER POSSIBLE CAUSES OF SOIL MIGRATION THAT MAY RESULT IN SHIFTING OF THE PIERS.
 10. BASE PLATES ARE NOT GROUTED. IF GROUTING IS REQUIRED ADD GROUT THICKNESS TO APPROACH DEPTH SHOWN.

MATERIAL REQUIREMENTS		TOTAL WT. OF REBAR		926
PLAN A:				
CONCRETE:	7 CU. YDS	4'-0"	2'-0"	64
APPROACHES:	24 CU. YDS	4'-0"		334
FOUNDATION 'A'		4'-0"		
REINFORCING:		5	11'-6"	528
REBAR 'A'	926			
4X4/4-4MWF	240 SQ FT			
6X6/10-10MWF	446 SQ FT			
PIECE NO.	BAR QTY SIZE	LENGTH & DESCRIPTION		WT.

MATERIAL REQUIREMENTS		TOTAL WT. OF REBAR		926
PLAN B:				
CONCRETE:	7 CU. YDS	4'-0"	2'-0"	64
APPROACHES:	16 CU. YDS	4'-0"		334
FOUNDATION 'B'		4'-0"		
REINFORCING:		5	11'-6"	528
REBAR 'B'	926			
4X4/4-4MWF	240 SQ FT			
PIECE NO.	BAR QTY SIZE	LENGTH & DESCRIPTION		WT.

EMERY WINSLOW SCALE COMPANY
 100 TON, 70' X 11' WFTA M.T.S.
 A.G. ALTERNATE FOUNDATION

SCALE: FIRST USED ON DRAWING NO. D-73008

REV.: