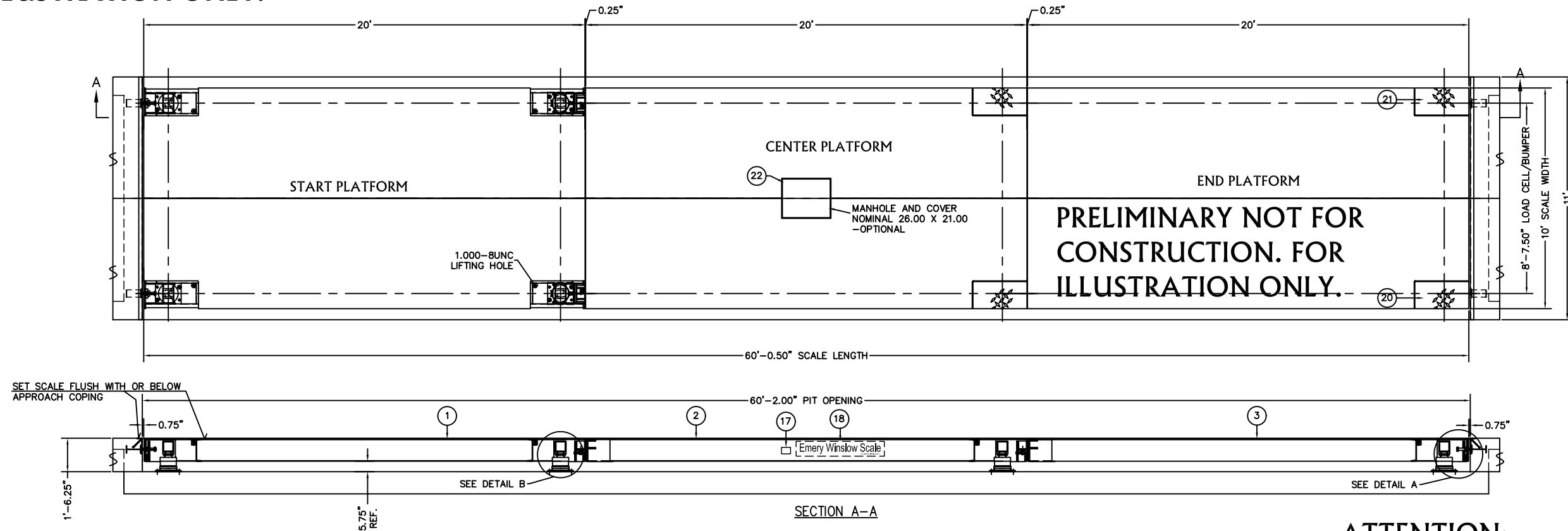


DECK PLATE THICKNESS CHART						
DASH NO.	A	B	C	ITEM 1 START PL. WT.	ITEM 2 CENTER PL. WT.	ITEM 3 END PL. WT.
-1	1/4"	1'-5.25"	0.25"	7172	7042	6989
-2	5/16"	1'-5.31"	0.19"	7681	7551	7498
-2	3/8"	1'-5.38"	0.13"	8192	8062	8009

ITEM NO.	DESCRIPTION	QTY	MATERIAL	UNIT WT.	PART NO.	SIZE	WT.	ITEM NO.	DESCRIPTION	QTY	MATERIAL	UNIT WT.	PART NO.	SIZE	WT.
1	START PLATFORM	1	SEE ASS'Y	see chart	D-72603-A		see chart	12	HHCS	24	SS	-		0.50-13UNC X 1.25	-
2	CTR PLATFORM	1	SEE ASS'Y	see chart	D-72604-A		see chart	13	MS FLAT WASHER	24	SS	-		FOR 0.5000", ONE PER CLAMP	-
3	END PLATFORM	1	SEE ASS'Y	see chart	D-72605-A		see chart	14	ANCHOR BOLT	16	ASTM A36	-	#7446	0.750 X 7.00	-
4	LOAD CELL	8	SEE ASS'Y	63.00	D-29547-2	136-75-CH; NTEP NP. 88-239-P	504	15	HHCS	4	GR. 8	-		1.25-7UNC X 6.00 FULL THREAD, ZN PL	-
5	APPROACH COPING	2	SEE ASS'Y	84.00	B-35979-A	OPTIONALLY SUPPLIED BY EWSCO	168	16	TRI-LOCK NUT	4	GR. 2H	-		1.25-7UNC, ZN PL	-
6	BASE PLATE	8	ASTM A36	35.70	B-35931-D		286	17	SERIAL NUMBER PLATE	1	SS	-	B-34821-D		-
7	CENTERING RING	8	A/R	1.50	B-29871-E		12	18	EWSCO DECAL	2	-	-	A-35412-A	8.00 X 48.00	-
8	SHIM	24	SS	0.50	A-29869-1-D	0.06 THICK	12	19	CHECK BOLT BUMPER	4	SEE ASS'Y	10.00	B-35978-C	OPTIONALLY SUPPLIED BY EWSCO	40
9	SHIM	16	SS	0.30	A-29869-2-D	0.03 THICK	5	20	COVER PLATE, RIGHT	4	ASTM A36	-	B-36465-B		-
10	HHCS	32	SS	-	-	0.375-13UNC X 1.25	-	21	COVER PLATE, LEFT	4	ASTM A36	-	B-36466-B		-
11	CLAMP	24	CS, ZN PL	-	A-29870-2-B		-	22	MANHOLE	A/R	ASTM A36	-	B-36488	OPTIONALLY SUPPLIED BY EWSCO	-

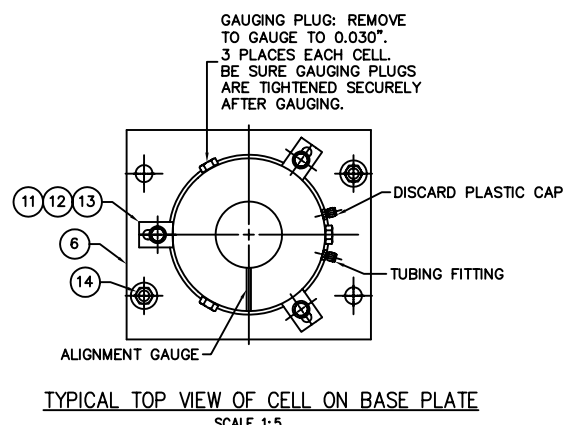
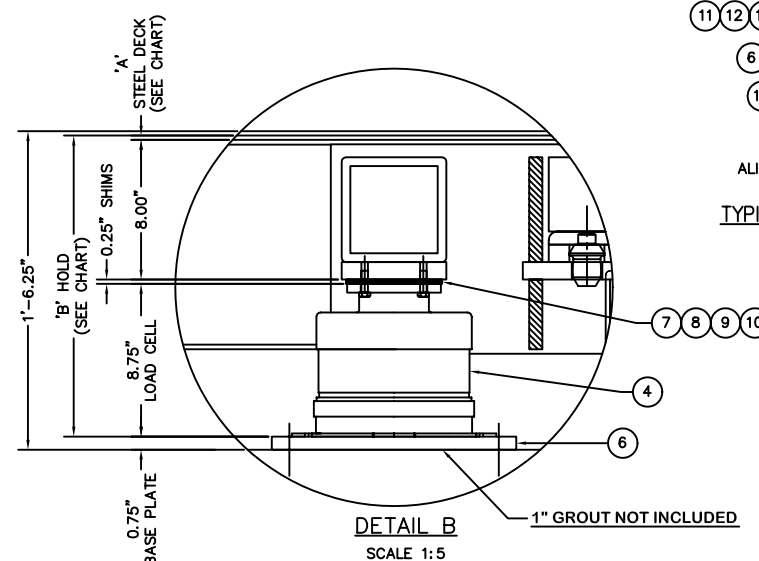
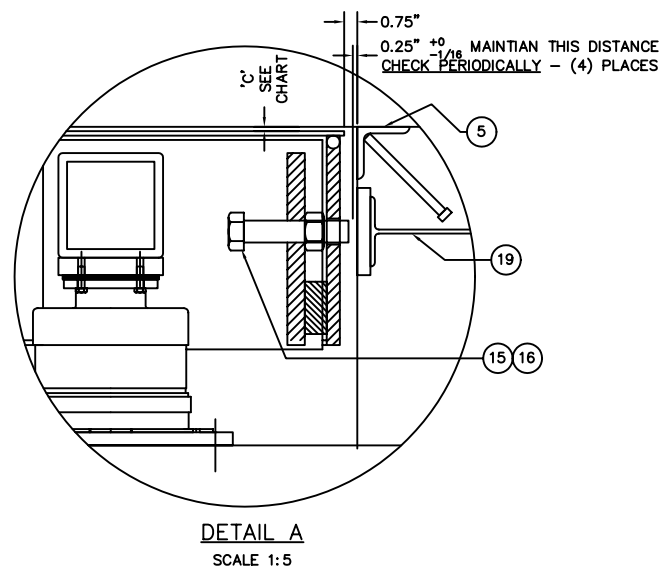
PRELIMINARY NOT FOR CONSTRUCTION. FOR ILLUSTRATION ONLY.



PRELIMINARY NOT FOR CONSTRUCTION. FOR ILLUSTRATION ONLY.

PRELIMINARY NOT FOR CONSTRUCTION. FOR ILLUSTRATION ONLY.

ATTENTION:  
SEE NOTE 1 ON INSTALLATION  
DRAWING # D-36118



FOR NON COMMERCIAL SCALES PROVIDE AN APPROACH OF 2 FEET MINIMUM LENGTH WHICH IS LEVEL AND IN SAME PLANE AS THE PLATFORM.

FOR COMMERCIAL SCALES CHECK WITH LOCAL WEIGHTS AND MEASURES OFFICIALS BEFORE STARTING CONSTRUCTIONS.

NATIONAL INSTITUTE OF STANDARDS AND TECHNOLOGY (NIST) HANDBOOK 44 REQUIRES:

- A STRAIGHT APPROACH OF AT LEAST ONE-HALF THE LENGTH OF THE PLATFORM.
- NOT LESS THAN 10 FEET OF APPROACH ADJACENT TO THE PLATFORM TO BE CONSTRUCTED OF CONCRETE OR SIMILAR DURABLE MATERIAL AND BE LEVEL AND IN THE SAME PLANE AS THE PLATFORM.

DRAWING REFERENCES:

- D-72592-A SLAB FOUNDATION
- D-72593-A ALTERNATE FOUNDATION
- D-36118-D INSTALLATION INSTRUCTIONS
- B-33069-C 4 SECTION TUBING DIAGRAM
- NTEP NO. 89-185PA3
- CLC = 58,000 LB CLASS III

PRELIMINARY NOT FOR CONSTRUCTION. FOR ILLUSTRATION ONLY.

REV.	DESCRIPTION	DATE	BY	CHKD.	DATE
A	REV'S UPDATED	11/08	CEM		
LTR	REVISION				

ALL SHARP CORNERS AND EDGES TO BE BROKEN UNLESS OTHERWISE SPECIFIED DIMENSIONS ARE IN INCHES

MACHINING ±.010  
FABRICATION ±.015

THIS DRAWING IS THE PROPERTY OF EMERY WINSLOW SCALE COMPANY SEYMOUR, CONNECTICUT. THE INFORMATION CONTAINED HEREIN IS CONFIDENTIAL AND IS NOT TO BE USED OR DISSEMINATED TO OTHERS WITHOUT THE EXPRESS WRITTEN CONSENT OF EMERY WINSLOW SCALE COMPANY.

DRAWN CEM DATE 06/12/08  
CHECKED DATE  
ACAD FILENAME: T02733  
LAYERS USED: ALL

EMERY WINSLOW SCALE COMPANY  
SEYMOUR, CT U.S.A. TERRE HAUTE, IN.

MODEL H84-10060-10-TA  
60' X 10', 100 TON; I-BEAM DESIGN  
AG OUTLINE ARRANGEMENT

SCALE 1:30 FIRST USED ON DRAWING NO. D-72591- REV. A

FULL SIZE PLOT D-24X36