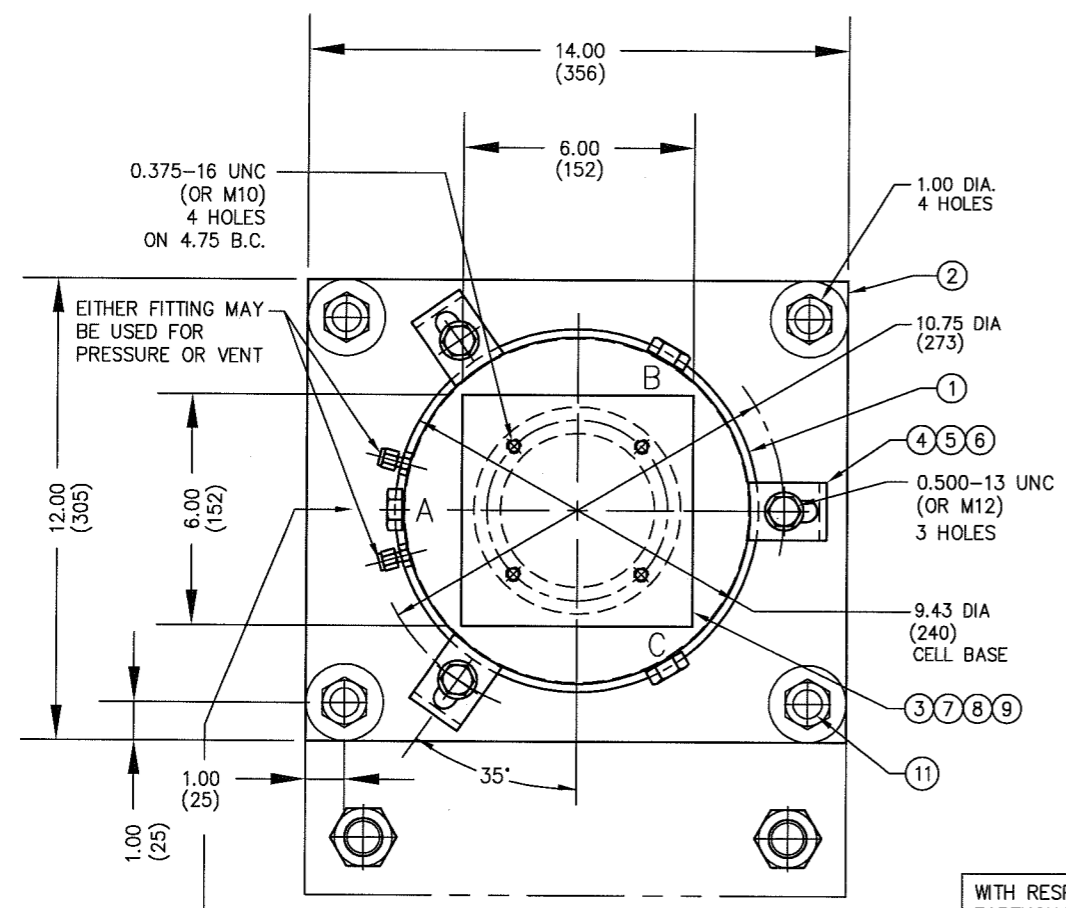
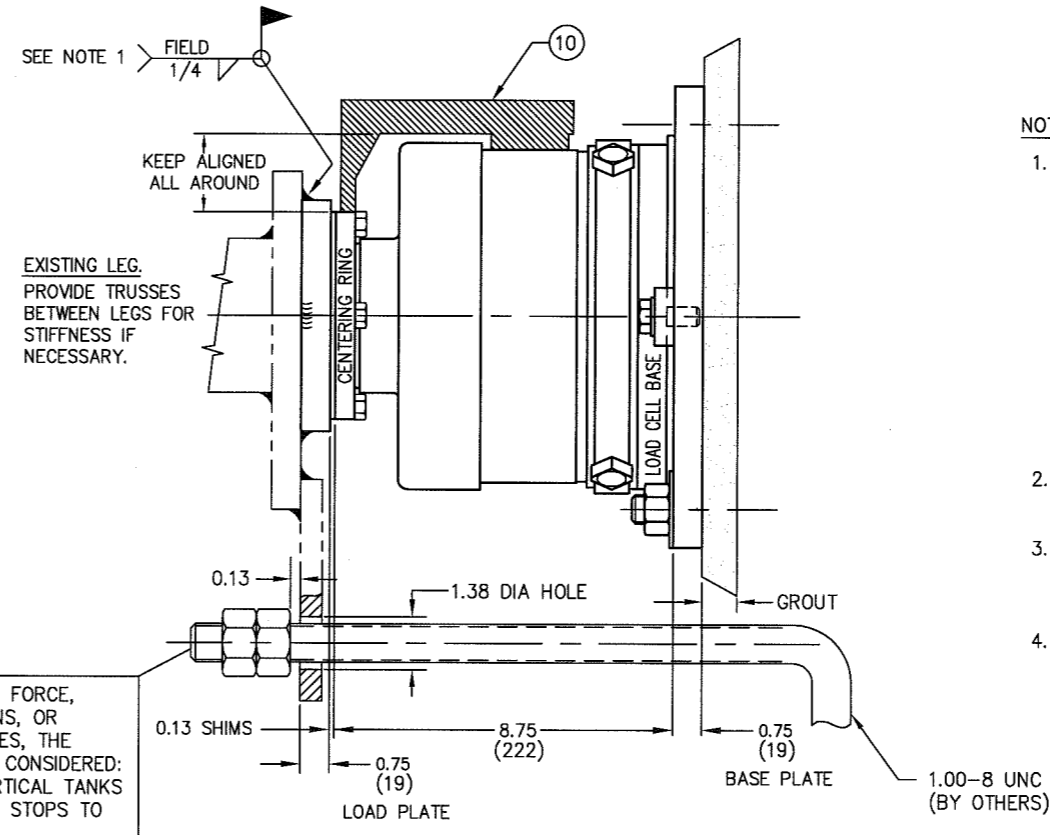


ITEM NO.	DESCRIPTION	QTY	MATERIAL	UNIT WT.	PART NO.	SIZE	WT.
1	LOAD CELL	1	SS 304		D-29547-1,-2	136-50.0/75.0	41.28 SQ.IN.
2	BASE PLATE	• 1	A/R		B-29953		
3	LOAD PLATE	• 1	A/R		A-31522-1		
4	HEX HEAD SCREW	3	SS 304		0.500-13 UNC X 1.25		
5	WASHER	3	SS 304		0.500 ID X 1.06 OD MS15795		
6	CLAMP	3	CS/ZINC PL		A-29870-2		
7	SHIM	2	SS 304		A-29869-1	0.06 THICK	
8	CENTERING RING	1	CS		B-29871		
9	HEX HEAD SCREW	4	SS 304		0.375-16 UNC X 1.25		
10	ALIGNMENT GAGE	1	ALUM		B-30305-1		
11	ANCHOR BOLT	• 4	CS		KB 11 34-7	HILTI OR EQUAL	

• SUPPLIED OPTIONALLY



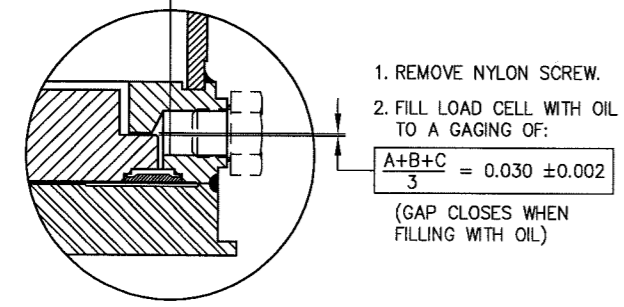
E



NOTES:

1. TO ASSURE ALIGNMENT OF LOAD CELL CENTERING RING TO LOAD CELL BASE, THE FOLLOWING PROCEDURE SHOULD BE FOLLOWED: CENTER LOAD CELL ON BASE PLATE WITH RESPECT TO CLAMP HOLD DOWN HOLES. CLAMP CELL IN POSITION USING CLAMPS, BOLTS AND WASHERS PROVIDED. BOLT LOAD PLATE, SHIMS AND CENTERING RING TOGETHER AND SET ON LOAD CELL. CENTER LOAD CELL BASE WITH RESPECT TO CENTERING RING USING ALIGNMENT GAGE. LOWER STRUCTURE ONTO LOAD PLATE AND WELD IN PLACE. IF REQUIRED, LOOSEN CLAMP BOLTS AND REALIGN CELL. RETIGHTEN CLAMP BOLTS.
2. BOTTOM OF LOAD PLATE MUST BE FLAT OVER ENTIRE CELL HEAD AREA.
3. TOP OF ALL BASE PLATES MUST BE FLAT OVER ENTIRE CELL AREA, LEVEL, AND ON A COMMON PLANE TO MINIMIZE SHIMMING.
4. INSTALL LOAD CELL WITH FITTINGS ACCESSIBLE TO FACILITATE TUBING AND PURGING.

WITH RESPECT TO WIND FORCE, EARTHQUAKE CONDITIONS, OR OTHER EXTERNAL FORCES, THE FOLLOWING SHOULD BE CONSIDERED: TALL AND NARROW VERTICAL TANKS MAY REQUIRE VERTICAL STOPS TO PREVENT OVERTURNING.



REVISION	DATE	BY
E B-30305-1 WAS B-30305	5/4/04	CBM
D ITEM 9 WAS 1.50	9/16/99	JDS
C NTEP ADDED	5/7/97	JDS
B CENTERING RING ADDED	1/13/96	JDS
A CAD REDRAWN	12/3/95	JDS

ALL SHARP CORNERS AND EDGES TO BE BROKEN  
UNLESS OTHERWISE SPECIFIED DIMENSIONS ARE IN INCHES  
DECIMALS FRACTIONS ANGLES  
.XX = ± .010 ± ±  
.XXX = ± .005 ± ±

DRAWN JDS DATE 12/3/95  
CHECKED DATE  
ACAD FILENAME: AC00330  
LAYERS USED: 45,46

NTEP CERT NO. 88-239-PA1

EMERY WINSLOW SCALE COMPANY  
SEYMOUR, CT. U.S.A. TERRE HAUTE, IN.

INSTALLATION OF SELF-CHECKING HYDROSTATIC COMPRESSION LOAD CELL ON CONCRETE  
MODEL 136-30/50/75CH  
30000/50000/75000 lb CAPACITY

SCALE	FIRST USED ON	DRAWING NO.	REV.
1:5		B-34656	E

THIS DRAWING IS THE PROPERTY OF EMERY WINSLOW SCALE COMPANY SEYMOUR, CONNECTICUT. THE INFORMATION CONTAINED HEREIN IS CONFIDENTIAL AND IS NOT TO BE USED OR DISSEMINATED TO OTHERS WITHOUT THE EXPRESS WRITTEN CONSENT OF EMERY WINSLOW SCALE COMPANY.