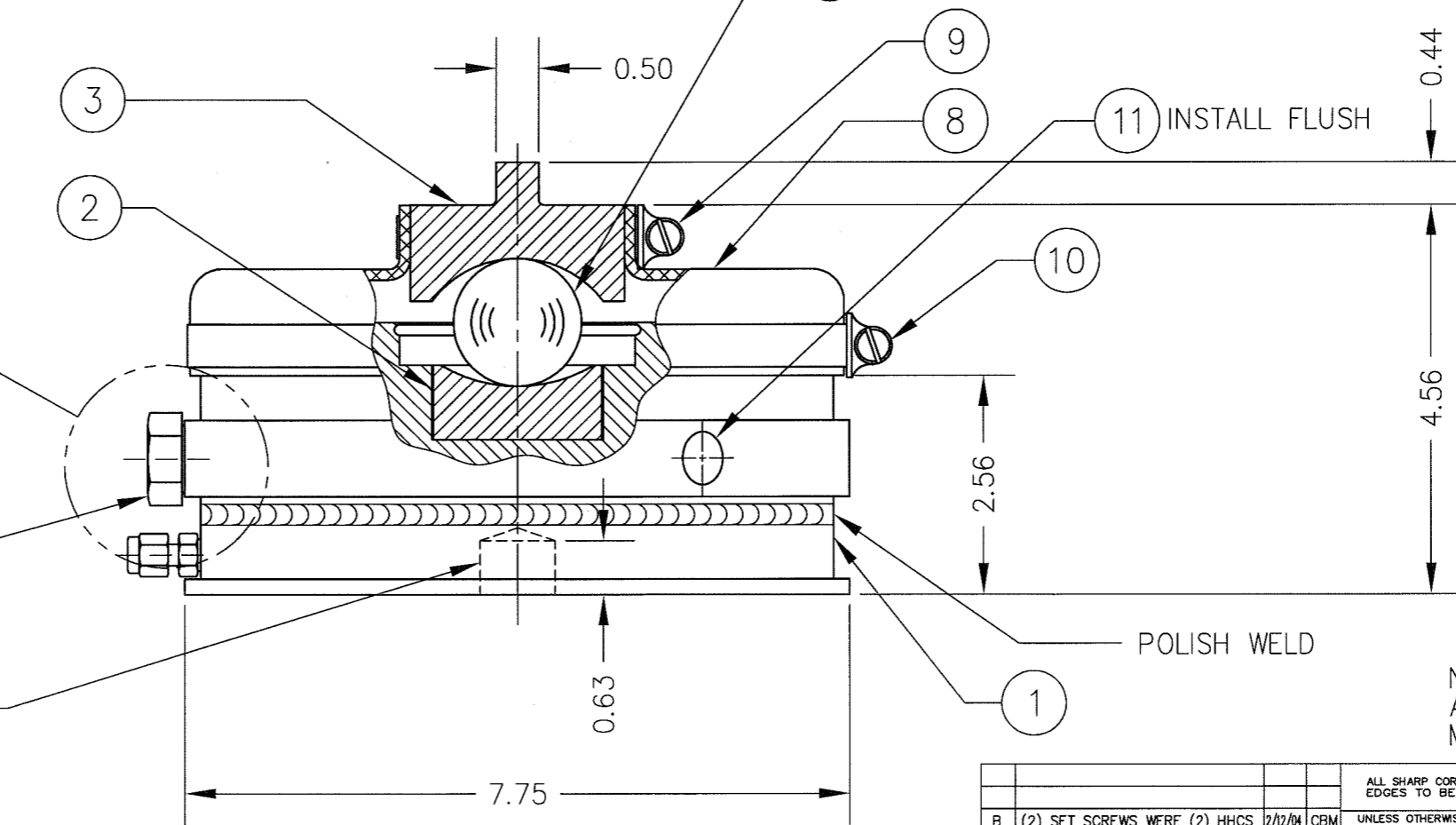
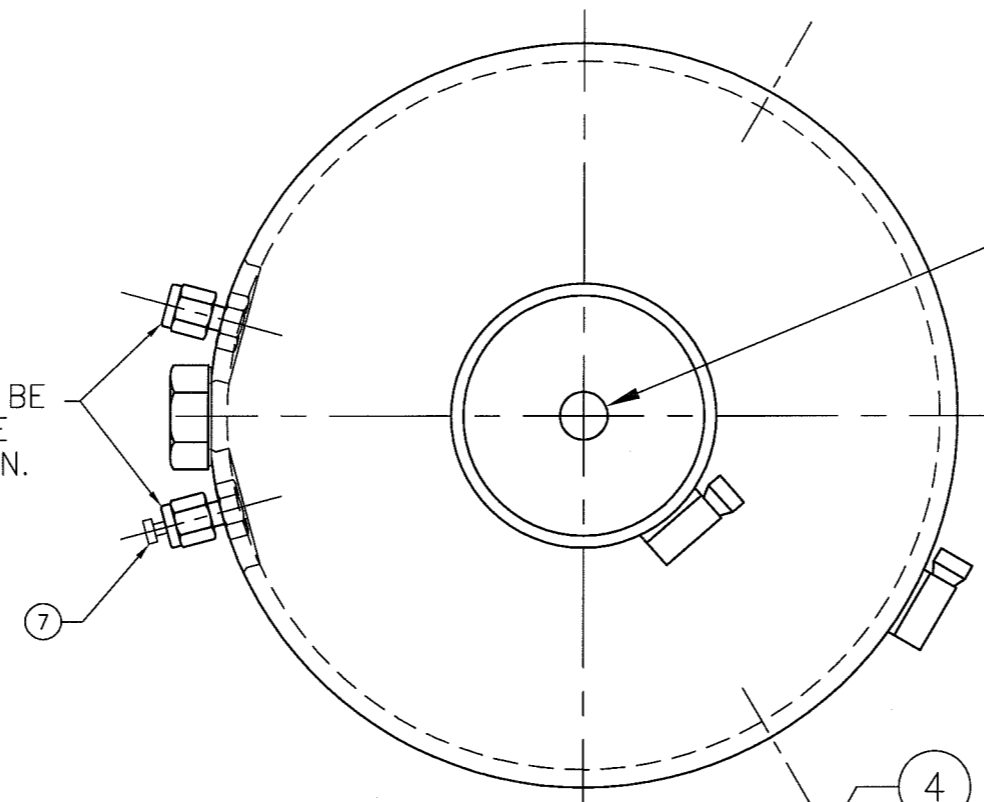


ITEM NO.	DESCRIPTION	QTY	MATERIAL	UNIT WT.	PART NO.	SIZE	WT.
1	SUB-ASSEMBLY	1	SS/ALUM		D-34691-Z		
2	LOAD BOSS	1	SS17-4		A-34672-1		
3	UPPER LOAD BOSS	1	SS17-4		A-35208		
4	LOAD BALL	1	440C		1.500 DIA		
5	PLUG	1	NYLON		HHCS	0.625-11 UNC X 0.50 LG	
6	O-RING	3	VITON		114-10V70	PARKER OR EQUAL	
7	PLUG	1	SS 316		SS-200-P	SWAGELOK OR EQUAL	
8	BOOT	1	RUBBER		A-34674		
9	CLAMP	1	SS 305		30040H	BREEZE	
10	CLAMP	1	SS 305		300152H	BREEZE	
11	SET SCREW	2	NYLON		94564A605	McMASTER CARR	

EITHER FITTING MAY BE USED FOR PRESSURE OR VENT CONNECTION.

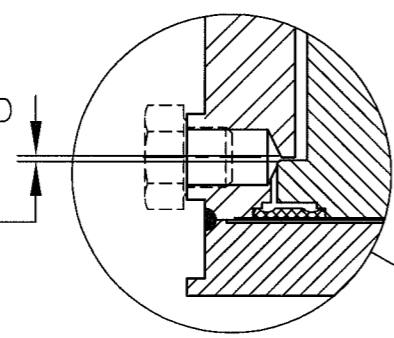


1. REMOVE NYLON SCREW.

2. FILL LOAD CELL WITH FLUID TO A GAGING OF:

0.025 - 0.030

(GAP CLOSSES WHEN FILLING WITH FLUID)



0.875 DRILL

NTEP CERT NO. 88-239 PA1  
ACTING AREA 25.00 SQ.IN.  
M1 - 0.875 CENTER HOLE

ALL SHARP CORNERS AND EDGES TO BE BROKEN		EMERY WINSLOW SCALE COMPANY SEYMOUR, CT U.S.A. TERRE HAUTE, IN.	
B	(2) SET SCREWS WERE (2) HHCS	2/12/04	CBM
A	0.44 WAS 0.50	1/17/01	CBM
LTR	REVISION	DATE	BY
THIS DRAWING IS THE PROPERTY OF EMERY WINSLOW SCALE COMPANY SEYMOUR, CONNECTICUT. THE INFORMATION CONTAINED HEREIN IS CONFIDENTIAL AND IS NOT TO BE USED OR DISSEMINATED TO OTHERS WITHOUT THE EXPRESS WRITTEN CONSENT OF EMERY WINSLOW SCALE COMPANY.		DRAWN	JDS
		DATE	9/16/99
		CHECKED	/
		DATE	
		ACAD FILENAME	AC00668
		LAYERS USED	1-5
UNLESS OTHERWISE SPECIFIED DIMENSIONS ARE IN INCHES		DECIMALS FRACTIONS ANGLES	
.XX = ± .010		°	
.XXX = ± .005		±	
SCALE		FIRST USED ON	DRAWING NO.
1:2			B-35248
REV.		B	