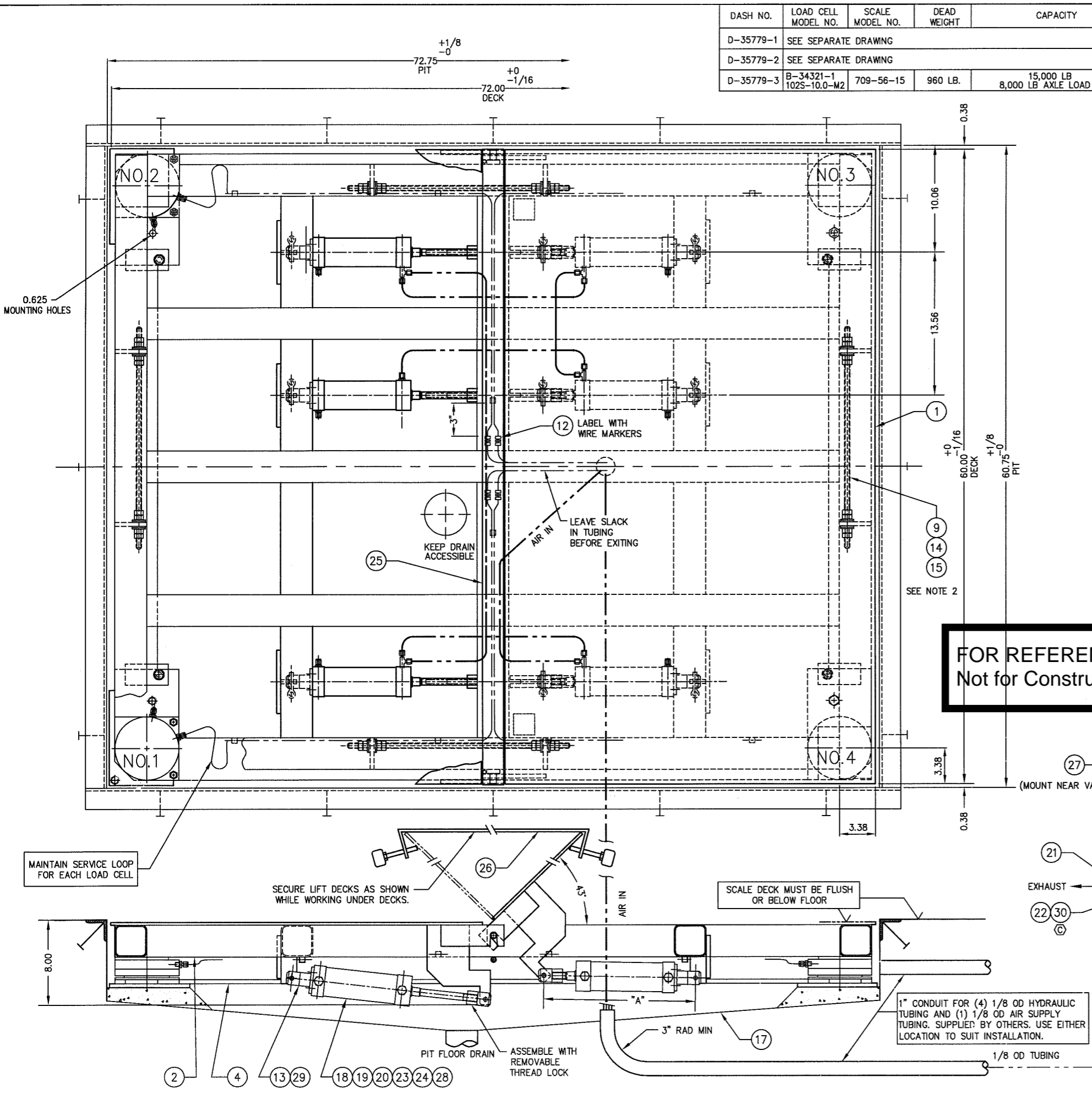
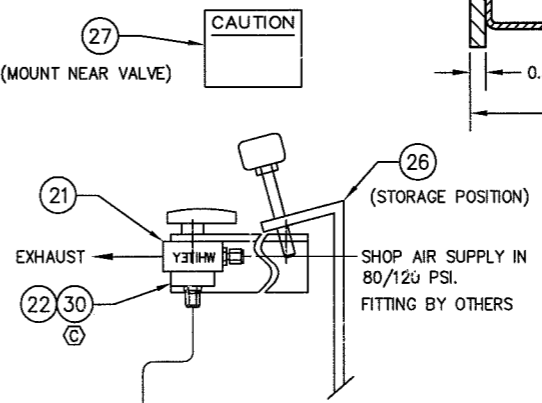
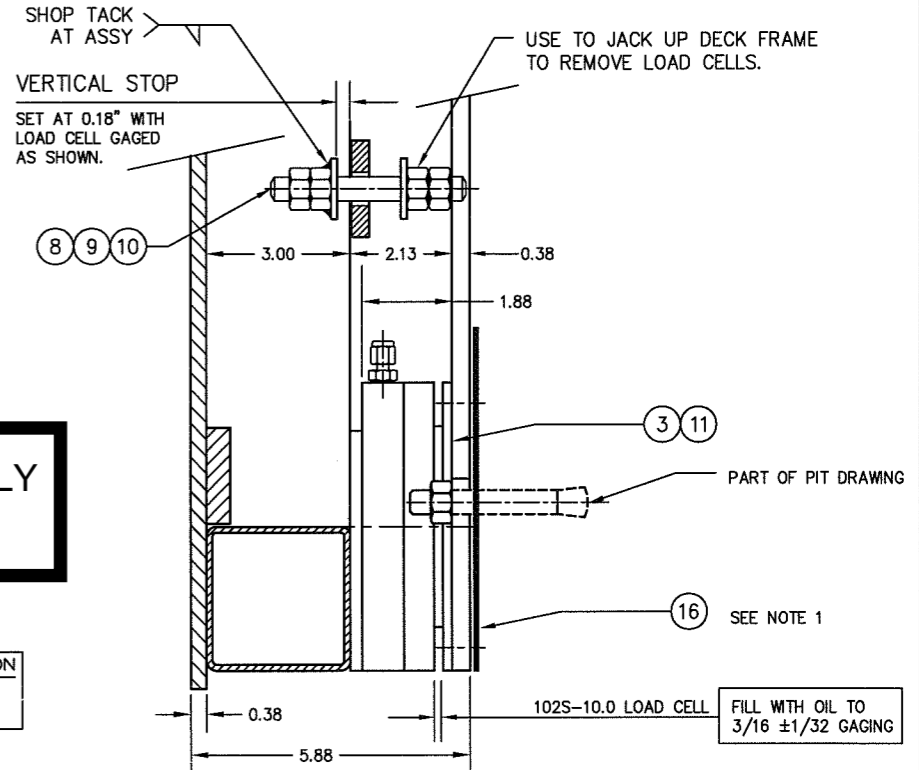


DASH NO.	LOAD CELL MODEL NO.	SCALE MODEL NO.	DEAD WEIGHT	CAPACITY	ITEM NO.	DESCRIPTION	QTY	MATERIAL	UNIT WT.	PART NO.	SIZE	WT.
D-35779-1	SEE SEPARATE DRAWING											
D-35779-2	SEE SEPARATE DRAWING											
D-35779-3	B-34321-1 102S-10.0-M2	709-56-15	960 LB.	15,000 LB 8,000 LB AXLE LOAD	1	PNEUMATIC LIFT DECK	2	SS 304		D-34864 (RH), D-34864-1 (LH), 0.38 (4 WAY SAFETY PLATE - OPTIONAL)		500
					2	DECK FRAME	1	SS 304		D-35780-3		400
					3	LOAD CELL	4	SS 304	5	SEE TABLE	1.88 HEIGHT	20
					4	BASE FRAME	1	SS 304		D-34432		106
					5							
					6							
					7							
					8	VERTICAL STOP THRD ROD	4	SS 304		0.500-20 UNF X 4.00		
					9	HN	48	SS 304		0.500-20 UNF	5020HNSS	
					10	FW	8	SS 304		0.500	50FWSS	
					11	SHCS	8	SS 304		0.250-20 UNC X 0.50	2520SHCS0050SS	
					12	UNION	4	SS 316		SS-200-6	SWAGelok OR EQUAL	
					13	CYLINDER CLEVIS WELDMNT	6	SS 304		A-35594		
					14	STAYBAR	4	SS 304		0.500-20 UNF X 20.00		
					15	SPHERICAL WASHER	16	SS 304		A-34509	0.500	
					16	SHIM	4	SS 304		0.06 X 6 X 7		
					17	PIT ARRANGEMENT	A/R			D-34594-1		
					18	PNEUMATIC LIFT CYLINDER	6	SS 316		US22436 2.50 DIA X 5.00 STROKE	SMC CORP.	
					19	ROD CLEVIS	6	SS 304		A-34541-2	M18 X 1.5	
					20	QUICK RELEASE PIN	12	SS 303		9840A372 0.38 DIA X 1.2 GRIP LENGTH	McMASTER CARR	
					21	MOUNTING BRACKET	1	SS 304		A-34544	2.00 X 2.00 X 0.19 X 8.00	
					22	BALL VALVE 3-WAY	1	BRASS		B43XF4	WHITE	
					23	MALE RUN TEE	5	SS 316		SS-200-3 TMT	SWAGelok OR EQUAL	
					24	MALE CONNECTOR	1	SS 316		SS-200-1-2	SWAGelok OR EQUAL	
					25	SPACER BAR	1	SS 304		B-34549-5	60.13 X 2.00 X 0.38	
					26	SAFETY BAR	1	SS 304		B-34548-3		
					27	CAUTION SIGN	1	ALUM		A-34550		
					28	VENT	6	CS/NIPL		BV-1 0.125 NPT	UNIVERSAL COMPONENTS, INC.	
					29	HHCS	24	SS 304		M10 X 1.5 X 20 mm (0.75) PART OF ITEM 18		
					30	MALE CONNECTOR	1	SS 316		SS-200-1-4	SWAGelok OR EQUAL	



FOR REFERENCE ONLY
Not for Construction



- NOTES:
1. ADD SHIMS AS REQUIRED UNDER SCALE BASE FRAME AND TACK WELD.
 2. FACTORY ADJUSTED STAYBARS. (STAYBARS SHOULD BE ADJUSTED TO TURN FREELY WITH MINIMAL AXIAL MOVEMENT. NUTS ARE SET WITH REMOVABLE THREAD LOCK.)
 3. FULLY CLOSED: "A" = 14.25

C	07/24/03	GMR	ALL SHARP CORNERS AND EDGES TO BE BROKEN	EMERY WINSLOW SCALE COMPANY SEYMOUR, CT U.S.A. TERRE HAUTE, IN.
B	06/02/03	GMR	DIMENSIONS ARE IN INCHES. TOLERANCES UNLESS SPECIFIED OTHERWISE: MACHINING .XX ± .01 FABRICATION ± .13	
A	04/30/03	GMR		
REV	DESCRIPTION	DATE	BY	
THIS DRAWING IS THE PROPERTY OF EMERY WINSLOW SCALE COMPANY SEYMOUR, CONNECTICUT. THE INFORMATION CONTAINED HEREIN IS CONFIDENTIAL AND IS NOT TO BE USED OR DISSEMINATED TO OTHERS WITHOUT THE EXPRESS WRITTEN CONSENT OF EMERY WINSLOW SCALE COMPANY.				SCALE: 1:5 DRAWING NO. D-35779-3 REV C
DRAWN: GMR DATE: 03/21/03 CHECKED: DATE: ACAD FILENAME: ACO1031 LAYERS USED: 01, L01-L09				