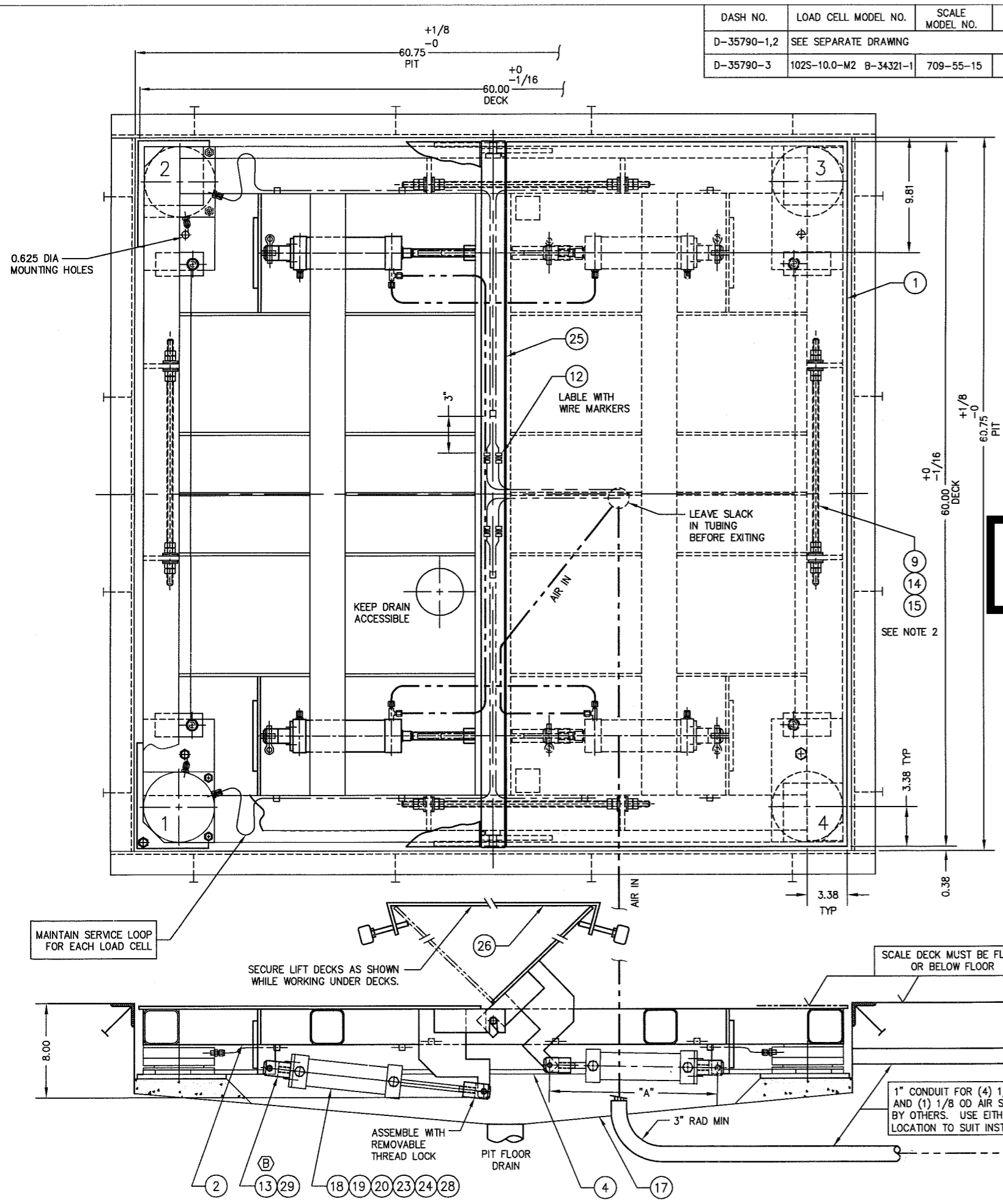
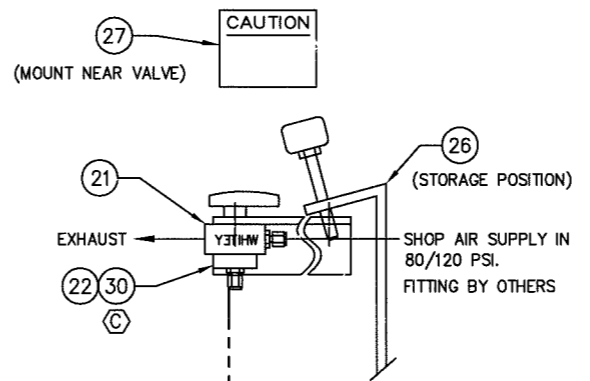
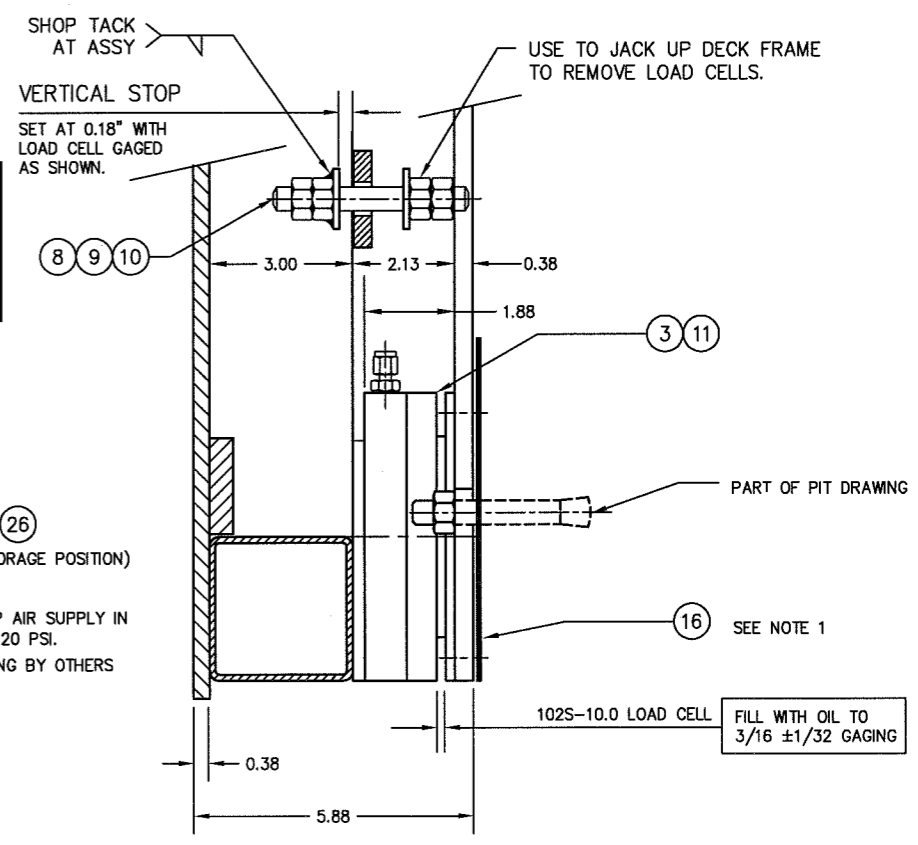


DASH NO.	LOAD CELL MODEL NO.	SCALE MODEL NO.	DEAD WEIGHT	CAPACITY	ITEM NO.	DESCRIPTION	QTY	MATERIAL	UNIT WT.	PART NO.	SIZE	WT.
D-35790-1,2	SEE SEPARATE DRAWING											
D-35790-3	102S-10.0-M2 B-34321-1	709-55-15	787 LB.	15,000 LB 8,000 LB AXLE LOAD	1	PNEUMATIC LIFT DECK	1 EA	SS 304	216	D-34535 (RH), D-34535-1 (LH), 0.38 (4-WAY SAFETY PLATE - OPTIONAL)		432
					2	DECK FRAME	1	SS 304		D-35791-3		335
					3	LOAD CELL	4	SS 304	5		1.88 HEIGHT	20
					4	BASE FRAME	1	SS 304		D-34430		106
					5							
					6							
					7							
					8	VERTICAL STOP THRD ROD	4	SS 304		0.500-20 UNF X 4.00		
					9	HN	48	SS 304		0.500-20 UNF	5020HNSS	
					10	FW	8	SS 304		0.500	50FWSS	
					11	SHCS	8	SS 304		0.250-20 UNC X 0.50	2520SHCS0050SS	
					12	UNION	4	SS 316		SS-200-6	SWAGelok OR EQUAL	
					13	CYLINDER CLEVIS WELDMENT	4	SS 304		A-35594		
					14	STAYBAR	4	SS 304		0.500-20 UNF X 20.00		
					15	SPHERICAL WASHER	16	SS 304		A-34509	0.500	
					16	SHIM	4	SS 304		0.06 X 6 X 7		
					17	PIT ARRANGEMENT	A/R			D-34534-1		
					18	PNEUMATIC LIFT CYLINDER	4	SS 316		US22436	2.50 DIA X 5.00 STROKE	SMC CORP.
					19	ROD CLEVIS	4	SS 304		A-34541-2	M18 X 1.5	
					20	QUICK RELEASE PIN	8	SS 303		98404A372	0.38 DIA X 1.2 GRIP LENGTH	McMASTER CARR
					21	MOUNTING BRACKET	1	SS 304		A-34544	2.00 X 2.00 X 0.19 X 5.00	
					22	BALL VALVE 3-WAY	1	BRASS		B43XF4	WHITEY	
					23	MALE RUN TEE	3	SS 316		SS-200-3 TMT	SWAGelok OR EQUAL	
					24	MALE CONNECTOR	1	SS 316		SS-200-1-2	SWAGelok OR EQUAL	
					25	SPACER BAR	1	SS 304		B-34549-5	60.13 X 2.00 X 0.38	
					26	SAFETY BAR	1	SS 304		B-34548-2		
					27	CAUTION SIGN	1	ALUM		A-34550		
					28	VENT	4	CS/NIPL		BV-2	0.250NPT	UNIVERSAL COMPONENT INC.
					29	HHCS	16	SS 304		M10 1.5 X 20 mm (0.75)	PART OF ITEM 18	
					30	MALE CONNECTOR	1	SS 316		SS-200-1-4	SWAGelok OR EQUAL	



FOR REFERENCE ONLY
Not for Construction



- NOTES:
- ADD SHIMS AS REQUIRED UNDER SCALE BASE FRAME AND TACK WELD.
 - FACTORY ADJUSTED STAYBARS. (STAYBARS SHOULD BE ADJUSTED TO TURN FREELY WITH MINIMAL AXIAL MOVEMENT. NUTS ARE SET WITH REMOVABLE THREAD LOCK.)
 - FULLY CLOSED: "A" = 14.25

REVISION	DATE	BY	DESCRIPTION
C	07/25/03	GMR	ON BOM. ADDED ITEM 30 ON F/D ITEM 30 WAS 24.
B	06/02/03	GMR	ADDED ITEM 13. ITEM 29, QTY 16 WAS 4.
A	04/30/03	GMR	ITEM 25, B-34549-5 WAS B-34549-2.

ALL SHARP CORNERS AND EDGES TO BE BROKEN		EMERY WINSLOW SCALE COMPANY SEYMOUR, CT U.S.A TERRE HAUTE, IN.	
UNLESS OTHERWISE SPECIFIED DIMENSIONS ARE IN INCHES		SCALE ASSEMBLY MODEL 709-55-15 WITH PNEUMATIC LIFT DECK SS 316 AIR CYLINDER	
DECIMALS	FRACTIONS	ANGLES	SCALE FIRST USED ON DRAWING NO. D-35790-3
±.0005	±.0005	±	1:5
CHECKED DATE	ACAD FILENAME: AC01030	LAYERS USED: 01,L01-L07	REV. C