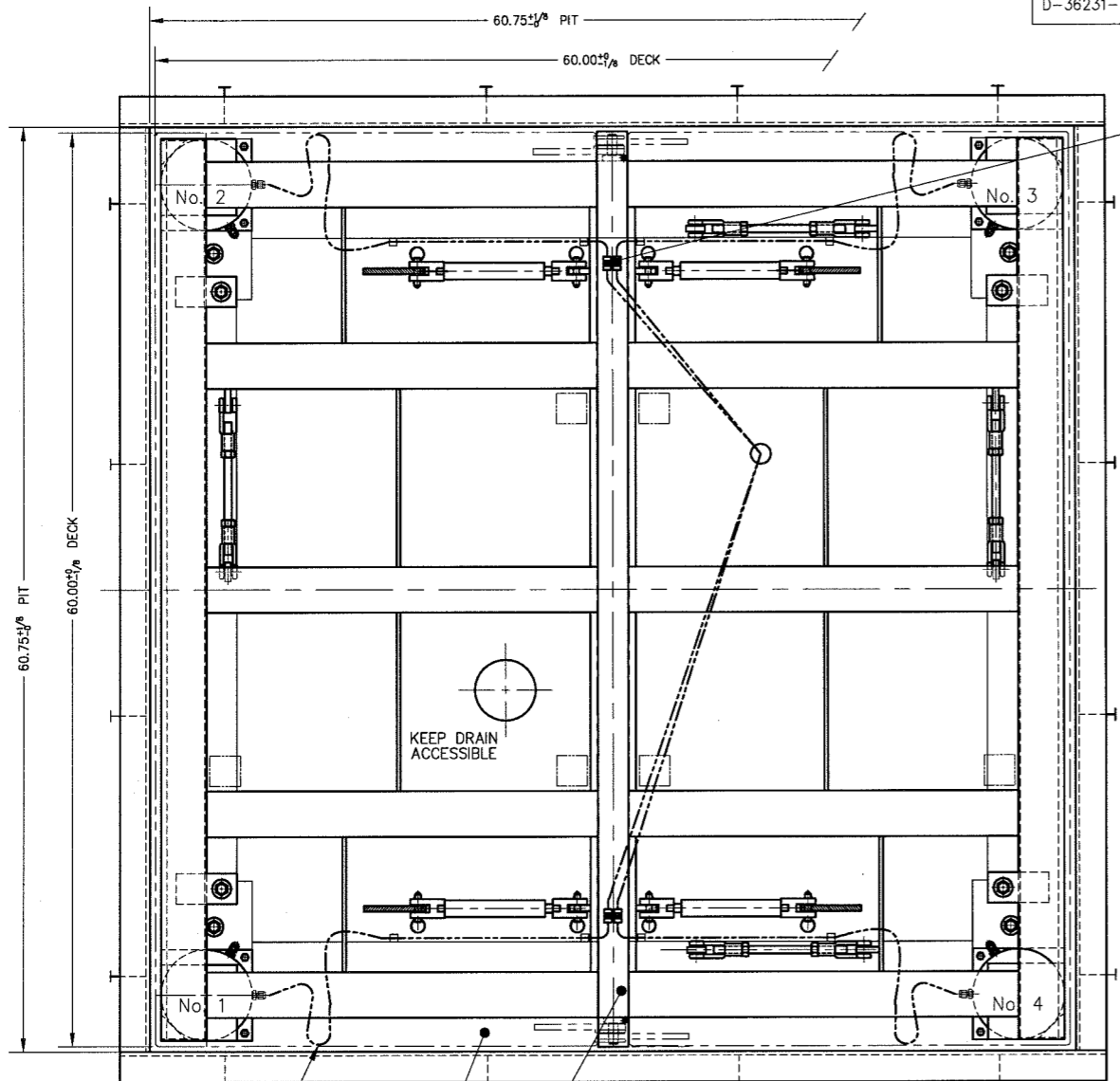


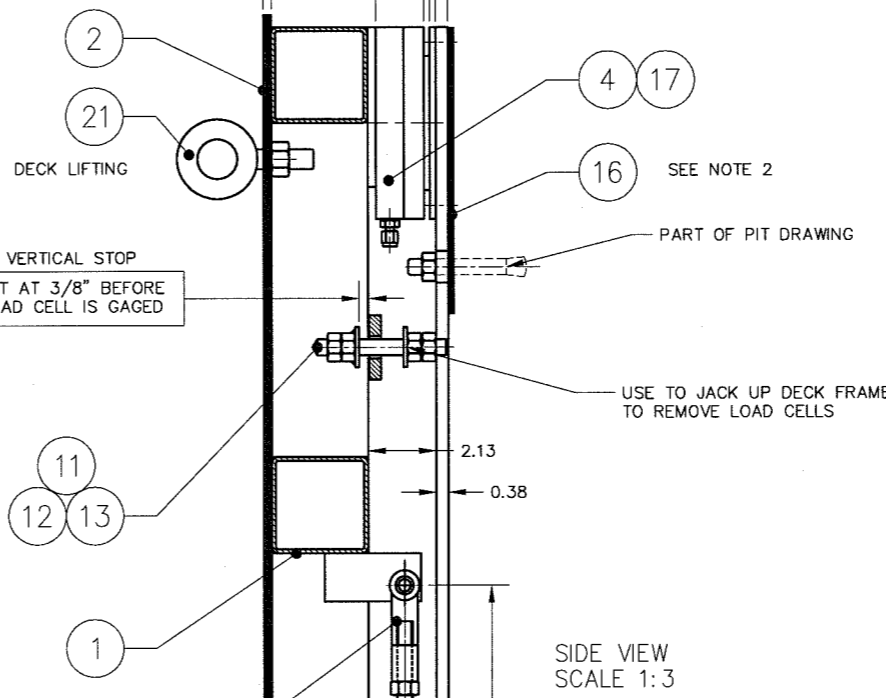
DASH NO.	LOAD CELL MODEL NO.	SCALE MODEL NO.	DEAD WEIGHT	CAPACITY
D-36231-1	102S-10.0-M2 B-34321-1	709-55-5	509 lb	5,000 lb 4,000 lb AXLE LOAD
D-36231-2	102S-10.0-M2 B-34321-1	709-55-10	587 lb	10,000 lb 8,000 lb AXLE LOAD
D-36231-3	SEE SEPARATE DRAWING			

ITEM NO.	DESCRIPTION	QTY	MATERIAL	UNIT WT.	PART NO.	SIZE	WT.
1	DECK FRAME	1	SS 304		D-36233-1		199
1	DECK FRAME	1	SS 304		D-36233-2		238
2	LIFT DECK SET	1	SS 304		D-36234	PLATE AS PER FACTORY ORDER	272
3	BASE FRAME	1	SS 304		D-36232		101
4	LOAD CELL	4	SS 304		SEE TABLE		
5	ROD CLEVIS	8	SS 304		A-34541-3	M10 X 1.5	
6	ROD CLEVIS	8	SS 304		2806SS	0.500-20 UNF MIDWEST CONTROL PRODUCTS CORP.	
7	STAYBAR	4	SS 304			0.500-20 UNF X 8.75	
8	CLEVIS PIN	8	SS 303		92390A382	0.50 DIA X 1.19 GRIP LENGTH	McMASTER CARR
9	HAIRPIN COTTER	8	SS 304		92391A130	0.25 - 0.38 SHAFT 1.18 OL	McMASTER CARR
10	SPACER BAR	1	SS 304		B-36246-2		
11	VERTICAL STOP THRD ROD	4	SS 304			0.500-20 UNF X 4.00	
12	VS HEX NUT WELDMENT	8	SS 304		A-35703		
13	HEX NUT, HALF	16	SS 304			0.500-20 UNF	
14	QUICK RELEASE PIN	8	SS 303		98404A372	0.38 DIA X 1.2 GRIP LENGTH	McMASTER CARR
15	UNION	4	SS 316		SS-200-8		SWAGelok OR EQUAL
16	SHIM	4	SS 304			0.06 X 6.00 X 7.00	
17	HHCS	8	SS 304			0.250-20 UNC X 0.50	
18	FHSCS	8	SS 304			0.250-20 UNC X 0.50	
19	LASH	4	SS 304		A-35557		
20	GAS SPRING FOR 0.25 DECK	4	SS 316		1165-SSHD-2.5-360		(REF B-35517-2) AMERI TOOL
20	GAS SPRING FOR 0.38 DECK	4	SS 316		1165-SSHD-2.5-470		(REF B-35517-2) AMERI TOOL
21	EYE BOLT	2	CS			0.625-11 X 1.75	313152 McMASTER CARR
22	PIT ARRANGEMENT	1			D-3411B		



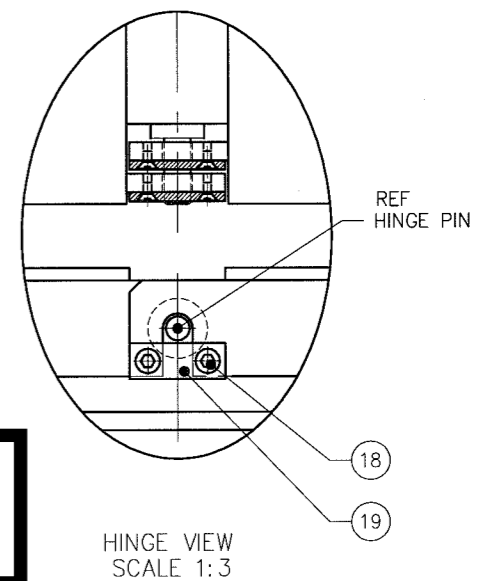
15  
TUBING EXIT FOR LOAD CELLS USE FABRIC WIRE MARKERS

0.25  
0.38  
5.50  
1.88  
102S-10.0  
FILL WITH FLUID TO 3/16 ±1/32 GAGING

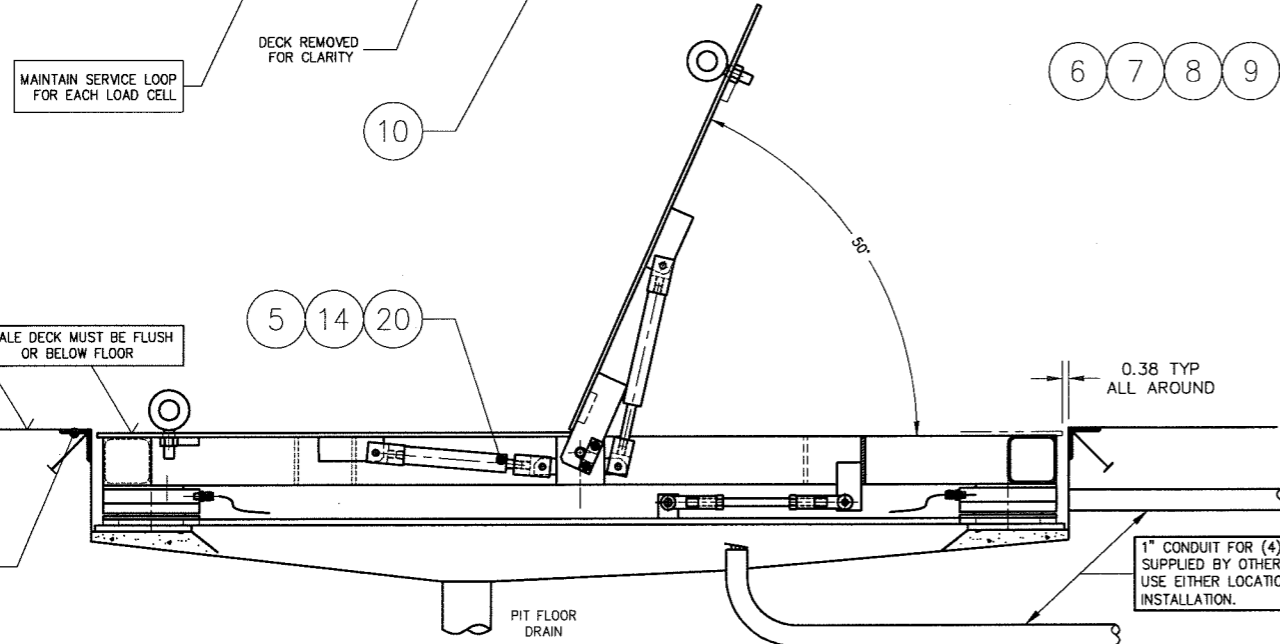


SIDE VIEW SCALE 1:3

**FOR REFERENCE ONLY**  
**Not for Construction**



HINGE VIEW SCALE 1:3



1" CONDUIT FOR (4) 1/8 HYDRAULIC TUBING SUPPLIED BY OTHERS. USE EITHER LOCATION TO SUIT INSTALLATION.

- SCALE MUST BE PLACED INTO PIT WITH DECK SET ASSEMBLED.
- ADD SHIMS AS REQUIRED UNDER SCALE BASE FRAME & TACK WELD.
- OPENING HAND FORCE 45 lb.
- FINISH: WHITE SAND BLAST TO (125 MIC).
- SEE PRODUCTION CONTROL DRAWING D-35654.

REV	DESCRIPTION	DATE	BY	DEBURR ALL CORNERS AND EDGES	EMERY WINSLOW SCALE COMPANY
B	REVISED	6/05	CBM	DIMENSIONS ARE IN INCHES. TOLERANCES UNLESS SPECIFIED OTHERWISE: MACHINING .XX = ± .01 .XXX = ± .005 ± .13	SEYMOUR, CT U.S.A TERRE HAUTE, IN.
A	SPACER BAR ADDED	5/18/05	CBM		
THIS DRAWING IS THE PROPERTY OF EMERY WINSLOW SCALE COMPANY SEYMOUR, CONNECTICUT. THE INFORMATION CONTAINED HEREIN IS CONFIDENTIAL AND IS NOT TO BE USED OR DISSEMINATED TO OTHERS WITHOUT THE EXPRESS WRITTEN CONSENT OF EMERY WINSLOW SCALE COMPANY.				DRAWN: CBM DATE: 4/11/05	SCALE 1:6
				CHECKED: DATE: AC01282	FIRST USED ON D-36231
				LAYERS USED: L0-L8	DRAWING NO. D-36231
					REV B