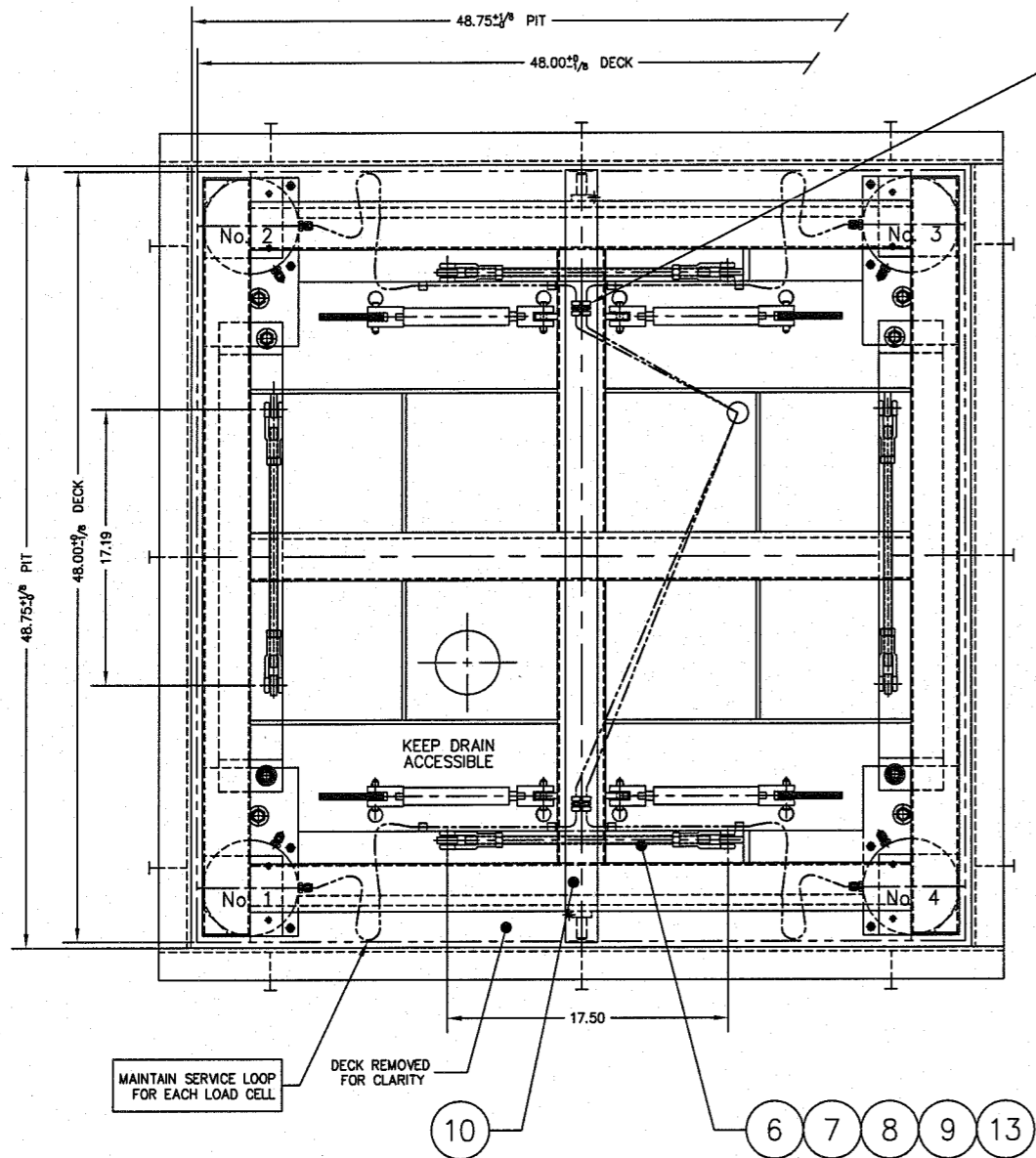
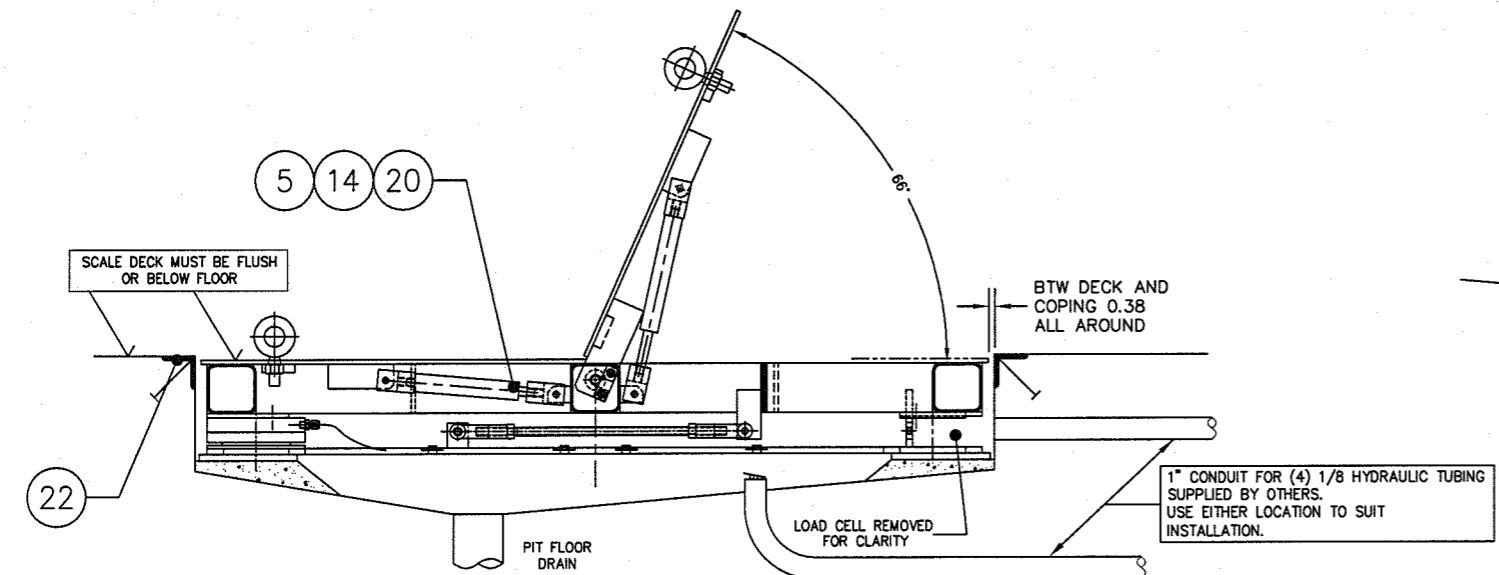
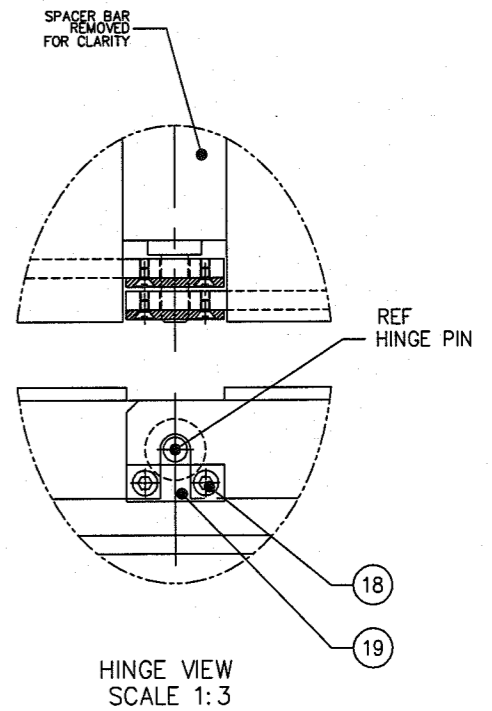
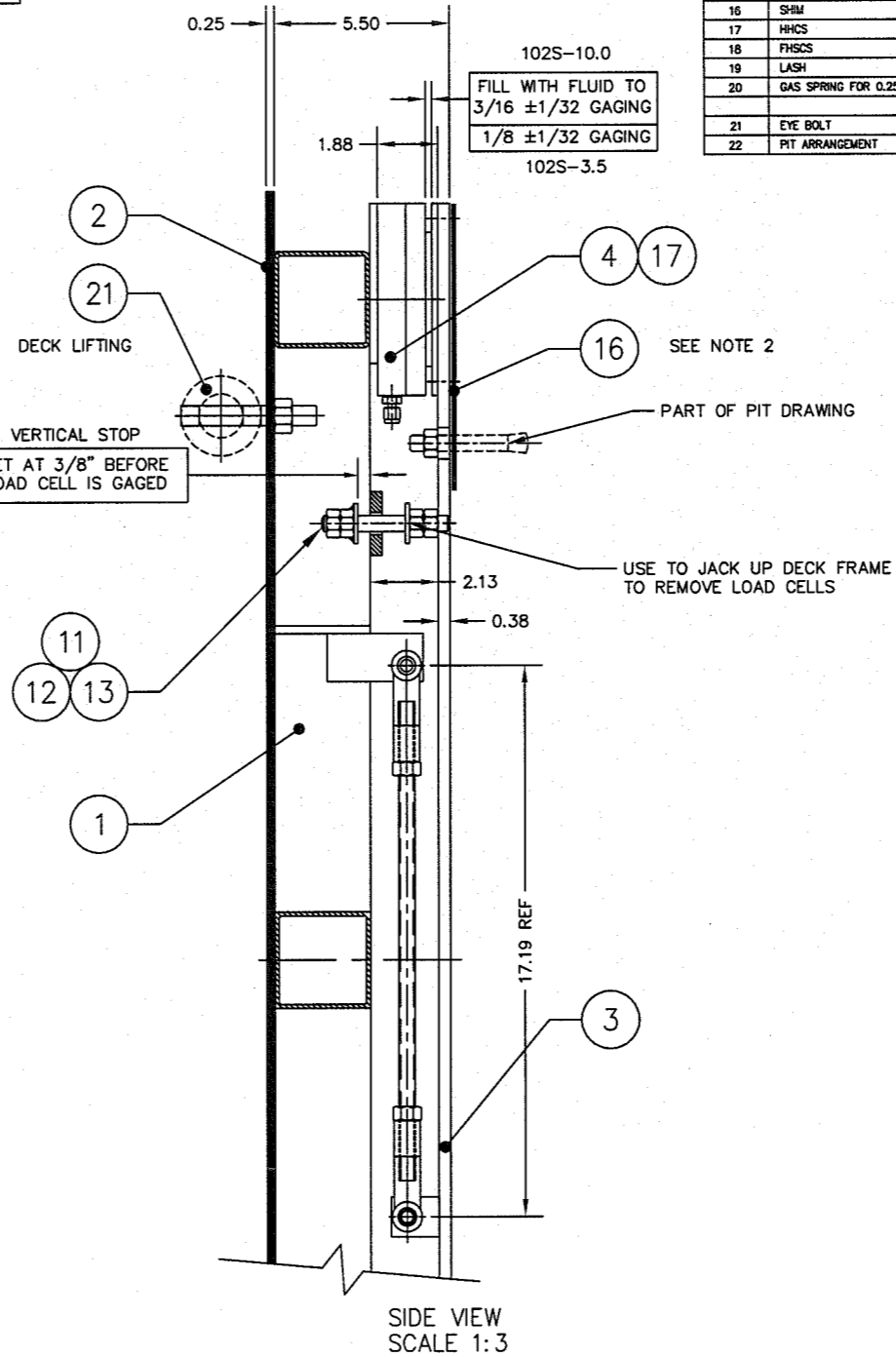


DASH NO.	LOAD CELL MODEL NO.	SCALE MODEL NO.	DEAD WEIGHT	CAPACITY
D-36340-1	102S-3.5-M1 B-34326-2	709-44-5	320	2,000/5,000 lb 4,000 lb AXLE LOAD
D-36340-2	102S-10.0-M2 B-34321-1	709-44-10	320	10,000 lb 8,000 lb AXLE LOAD

ITEM NO.	DESCRIPTION	QTY	MATERIAL	UNIT WT.	PART NO.	SIZE	WT.
1	DECK FRAME	1	SS 304		D-36342		147
2	LIFT DECK SET	1	SS 304		D-36343	PLATE AS PER FACTORY ORDER	172
3	BASE FRAME	1	SS 304		D-36341		81
4	LOAD CELL	4	SS 304		SEE TABLE		
5	ROD CLEVIS	8	SS 304		A-34541-3	M10 X 1.5	
6	ROD CLEVIS	8	SS 304		2806SS	0.500-20 UNF	MIDWEST CONTROL PRODUCTS CORP.
7	STAYBAR	4	SS 304		A-35900-3	(0.500-20 UNF X 13.25)	
8	CLEVIS PIN	8	SS 18-8		92390A382	0.50 DIA X 1.19 GRIP LENGTH	McMASTER CARR
9	HAIRPIN COTTER	8	SS 18-8		92391A130	0.25 - 0.38 SHAFT 1.18 OL	McMASTER CARR
10	SPACER BAR	1	SS 304		B-36246-1	(48.13 LG)	
11	VERTICAL STOP THRD ROD	4	SS 304			0.500-20 UNF X 4.00	
12	VS HEX NUT WELDMENT	8	SS 304		A-35703		
13	HEX NUT, HALF	16	SS 304		0.500-20 UNF		
14	QUICK RELEASE PIN	8	SS 18-8		9840A372	0.38 DIA X 1.2 GRIP LENGTH	McMASTER CARR
15	UNION	4	SS 316		SS-200-6		SWAGelok OR EQUAL
16	SHIM	4	SS 304			0.06 X 6.00 X 7.00	
17	HNCS	8	SS 304			0.250-20 UNC X 0.50	
18	FHSCS	8	SS 304			0.250-20 UNC X 0.50	
19	LASH	4	SS 304		A-35557		
20	GAS SPRING FOR 0.25 DECK	4	SS 316		1165-SSHD-2.5-150	(REF B-35517-2)	AMERI TOOL
21	EYE BOLT	2	CS		0.625-11 X 1.75	3013T52	McMASTER CARR
22	PIT ARRANGEMENT	1			D-34500		



15
TUBING EXIT FOR LOAD CELLS USE FABRIC WIRE MARKERS



- SCALE MUST BE PLACED INTO PIT WITH DECK SET ASSEMBLED.
- ADD SHIMS AS REQUIRED UNDER SCALE BASE FRAME & TACK WELD.
- OPENING HAND FORCE 45 lb.
- FINISH: WHITE SAND BLAST TO (125 MIC).
- SEE PRODUCTION CONTROL DRAWING D-35654.

DEBURR ALL CORNERS AND EDGES				EMERY WINSLOW SCALE COMPANY	
DIMENSIONS ARE IN INCHES.				SEYMOUR, CT U.S.A. TERRE HAUTE, IN.	
TOLERANCES UNLESS SPECIFIED OTHERWISE:				SCALE ASSEMBLY	
MACHINING: .XX = ±.01				709-44-	
FABRICATION: .XXX = ±.005				WITH GAS SPRING LIFT DECK	
THIS DRAWING IS THE PROPERTY OF EMERY WINSLOW SCALE COMPANY				SCALE 1:6	
SEYMOUR, CONNECTICUT. THE INFORMATION CONTAINED HEREIN IS CONFIDENTIAL AND IS NOT TO BE USED OR DISSEMINATED TO OTHERS WITHOUT THE EXPRESS WRITTEN CONSENT OF EMERY WINSLOW SCALE COMPANY.				DRAWN: CSB/OT DATE: 6/7/06	
CHECKED: DATE:				DRAWING NO. D-36340	
ACAD FILENAME: AC01410				REV	
LAYERS USED: ALL					