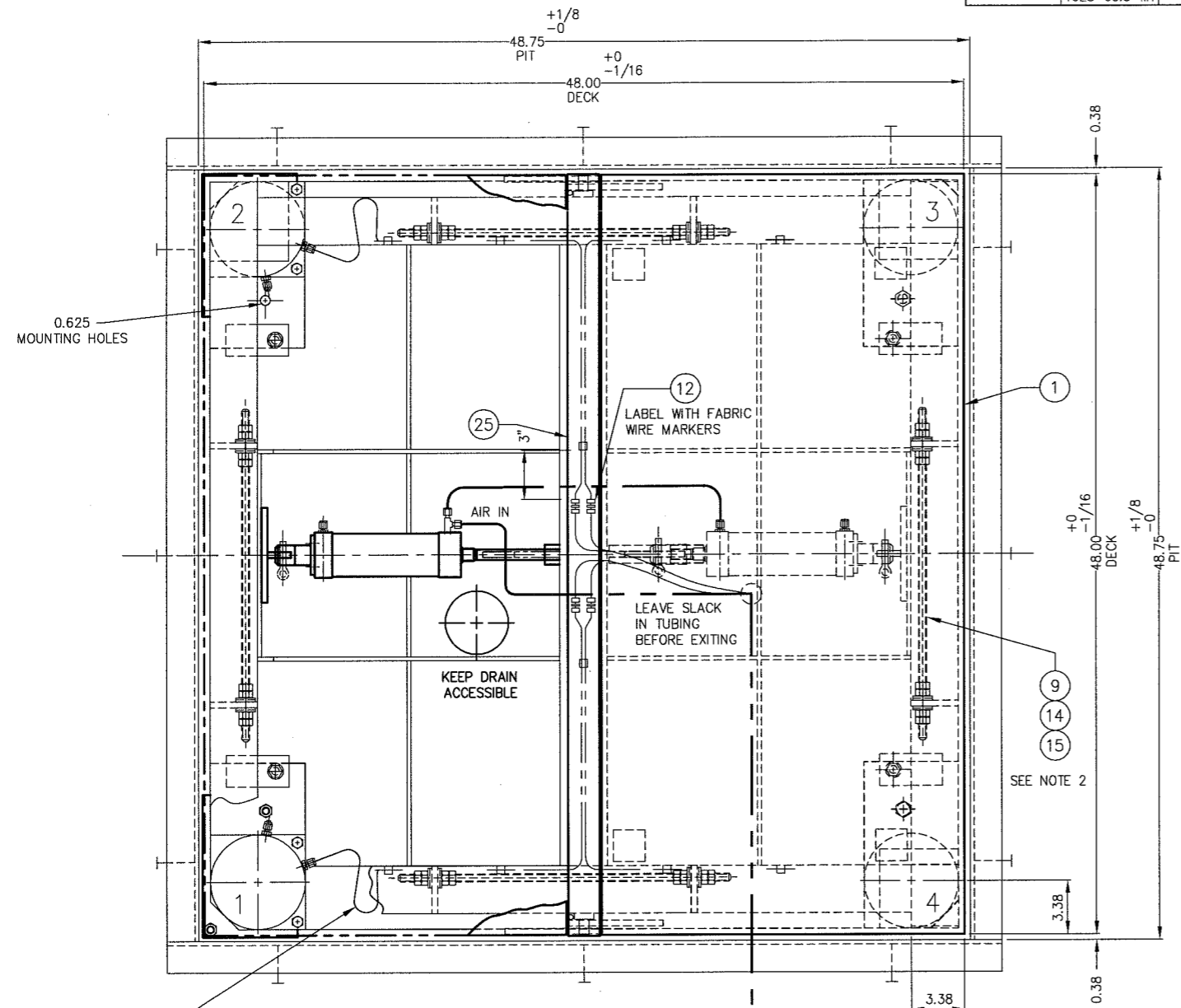
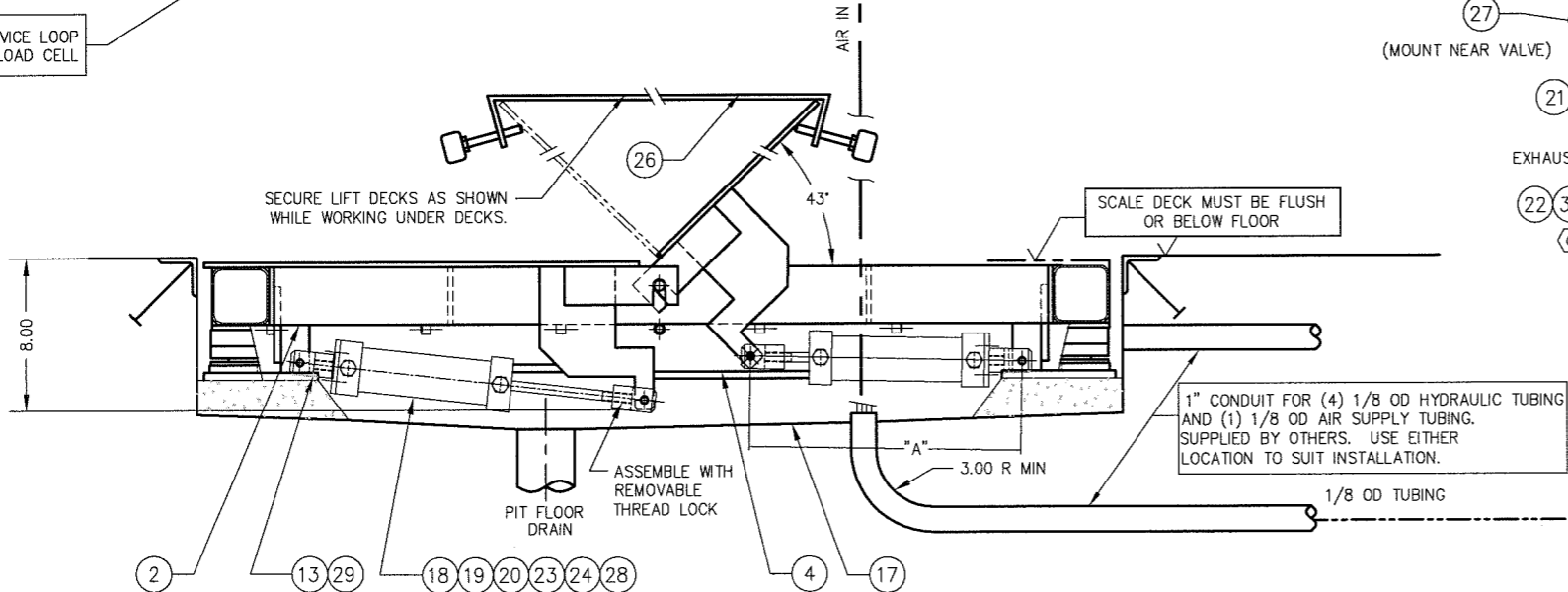


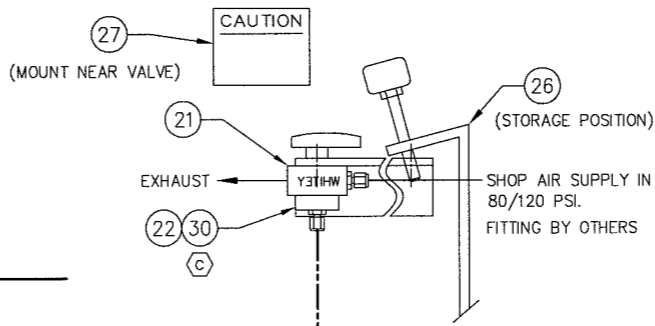
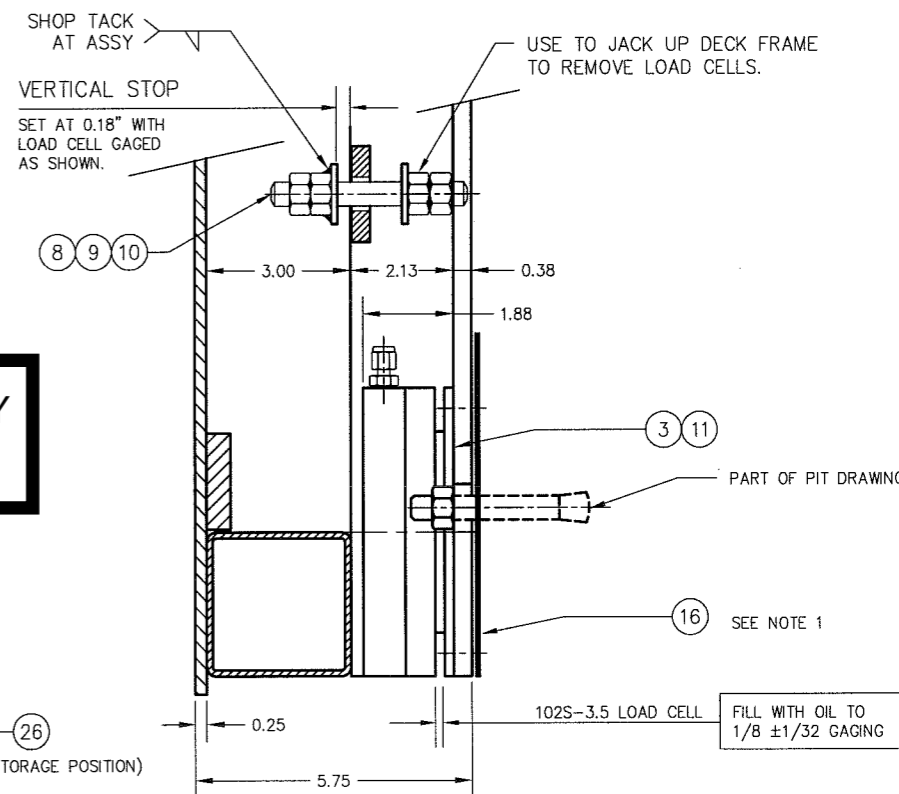
DASH NO.	LOAD CELL MODEL NO.	SCALE MODEL NO.	DEAD WEIGHT	CAPACITY	ITEM NO.	DESCRIPTION	QTY	MATERIAL	UNIT WT.	PART NO.	SIZE	WT.
D-35783-1	B-34326-2 102S-03.5-M1	709-44-2	343 LB.	2,000 LB 2,000 LB AXLE LOAD	1	PNEUMATIC LIFT DECK	2	SS 304		D-34592 (RH), D-34592-1 (LH), 0.25 (4-WAY SAFETY PLATE - OPTIONAL)		186
					2	DECK FRAME	1	SS 304		D-35784-1		137
D-35783-2	B-34326-2 102S-03.5-M1	709-44-5	343 LB.	5,000 LB 4,000 LB AXLE LOAD	1	PNEUMATIC LIFT DECK	2	SS 304		D-34592 (RH), D-34592-1 (LH), 0.25 (4-WAY SAFETY PLATE - OPTIONAL)		186
					2	DECK FRAME	1	SS 304		D-35784-1		137
					3	LOAD CELL	4	SS 304	5	SEE TABLE	1.88 HEIGHT	20
					4	BASE FRAME	1	SS 304		D-34499		73
					5							
					6							
					7							
					8	VERTICAL STOP THRD ROD	4	SS 304		0.500-20 UNF X 4.00		
					9	HN	48	SS 304		0.500-20 UNF	5020HNSS	
					10	FW	4	SS 304		0.500	50FWSS	
					11	SHCS	8	SS 304		0.250-20 UNC X 0.50	2520SHCS0050SS	
					12	UNION	4	SS 316		SS-200-6	SWAGelok OR EQUAL	
					13	CYLINDER CLEVIS WELDMENT	2	SS 304		A-35594		
					14	STAYBAR	4	SS 304		0.500-20 UNF X 20.00		
					15	SPHERICAL WASHER	16	SS 304		A-34509 0.500		
					16	SHIM	4	SS 304		0.06 X 6 X 7		
					17	PIT ARRANGEMENT	A/R			D-34591		
					18	PNEUMATIC LIFT CYLINDER	2	SS 316		US22436 2.50 DIA X 5.00 STROKE SMC CORP.		
					19	ROD CLEVIS	2	SS 304		A-34541-2	M18 x 1.5	
					20	QUICK RELEASE PIN	4	SS 303		9840A372 0.38 DIA X 1.2 GRIP LENGTH	McMASTER CARR	
					21	MOUNTING BRACKET	1	SS 304		A-34544	2.00 X 2.00 X 0.19 X 5.00	
					22	BALL VALVE 3-WAY	1	BRASS		B43XF4	WHITE	
					23	MALE RUN TEE	1	SS 316		SS-200-3 TMT	SWAGelok OR EQUAL	
					24	MALE CONNECTOR	1	SS 316		SS-200-1-2	SWAGelok OR EQUAL	
					25	SPACER BAR	1	SS 304		B-34549-1	48.13 X 2.00 X 0.31	
					26	SAFETY BAR	1	SS 304		B-34548-1		
					27	CAUTION SIGN	1	ALUM		A-34550		
					28	VENT	2	CS/NIPL		BV-1 0.125 NPT	UNIVERSAL COMPONENT, INC.	
					29	HHCS	8	SS 304		M10 X 1.5 X 20mm (0.75)	PART OF ITEM 18	
					30	MALE CONNECTOR	1	SS 316		SS-200-1-4	SWAGelok OR EQUAL	



MAINTAIN SERVICE LOOP FOR EACH LOAD CELL



**FOR REFERENCE ONLY**  
Not for Construction



- NOTES:
- ADD SHIMS AS REQUIRED UNDER SCALE BASE FRAME AND TACK WELD.
  - FACTORY ADJUSTED STAYBARS. (STAYBARS SHOULD BE ADJUSTED TO TURN FREELY WITH MINIMAL AXIAL MOVEMENT. NUTS ARE SET WITH REMOVABLE THREAD LOCK.)
  - FULLY CLOSED: "A" = 14.25

REVISION	DATE	BY	DESCRIPTION
D	11/28/04	CBM	CORRECTED SIDE VIEW; BASE WEIGHT WAS 80
C	07/25/03	GMR	ON BOM. ADDED ITEM 30. ON F/D ITEM 30 WAS 24.
B	06/02/03	GMR	ADDED ITEM 13. ITEM 29, QTY 8 WAS 4
A	05/01/03	GMR	ITEM 25, 48.13 X 2.00 X 0.31 WAS 48.13 X 2.00 X 0.25

EMERY WINSLOW SCALE COMPANY SEYMOUR, CT U.S.A. TERRE HAUTE, IN.
SCALE ASSEMBLY MODEL 709-44 WITH PNEUMATIC LIFT DECK SS 316 AIR CYLINDER
SCALE: 1:5
DRAWING NO. D-35783-
REV. D