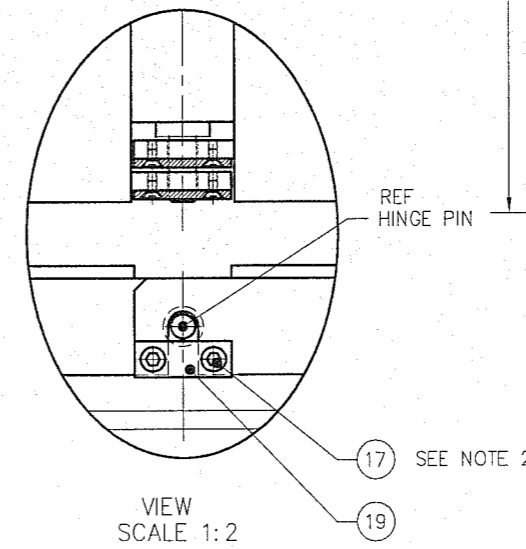
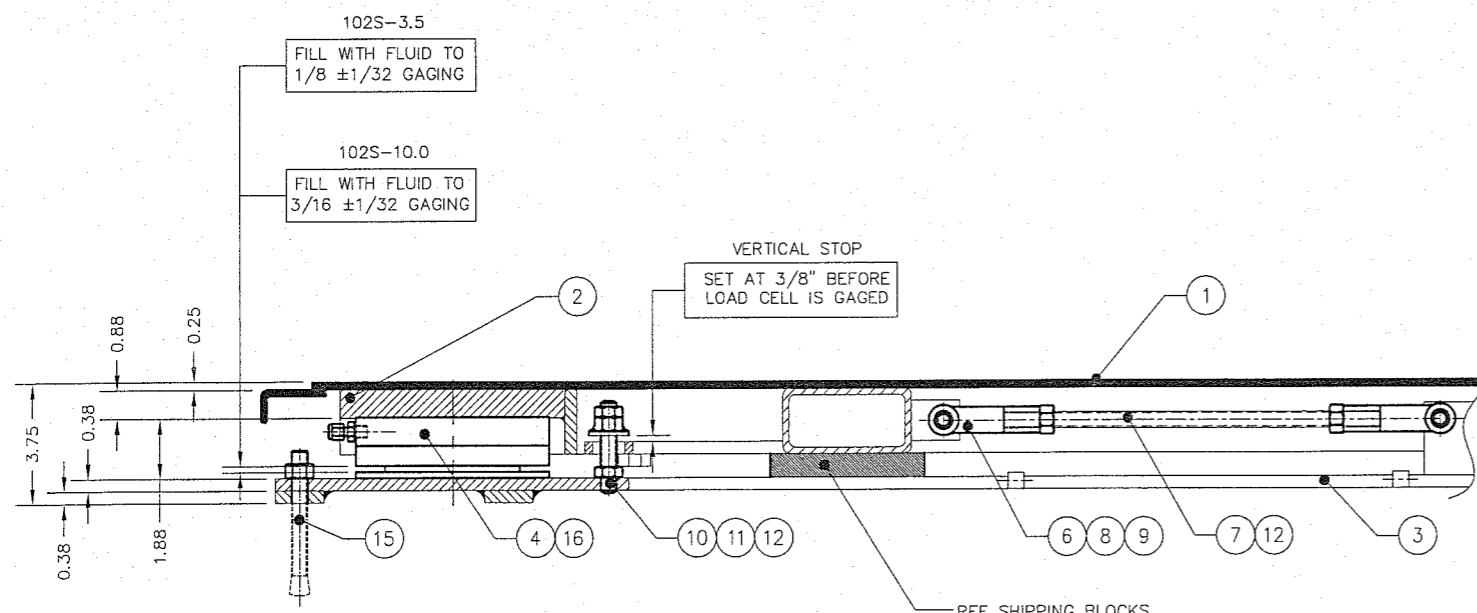
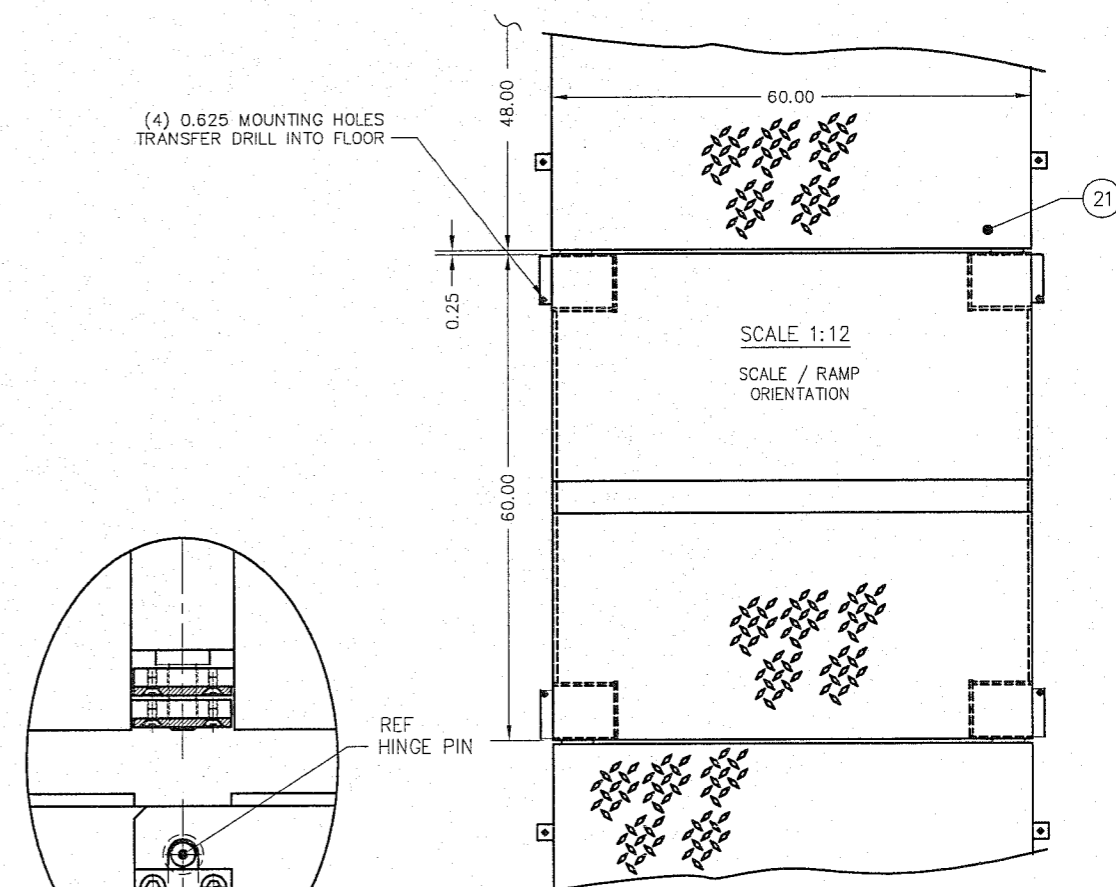
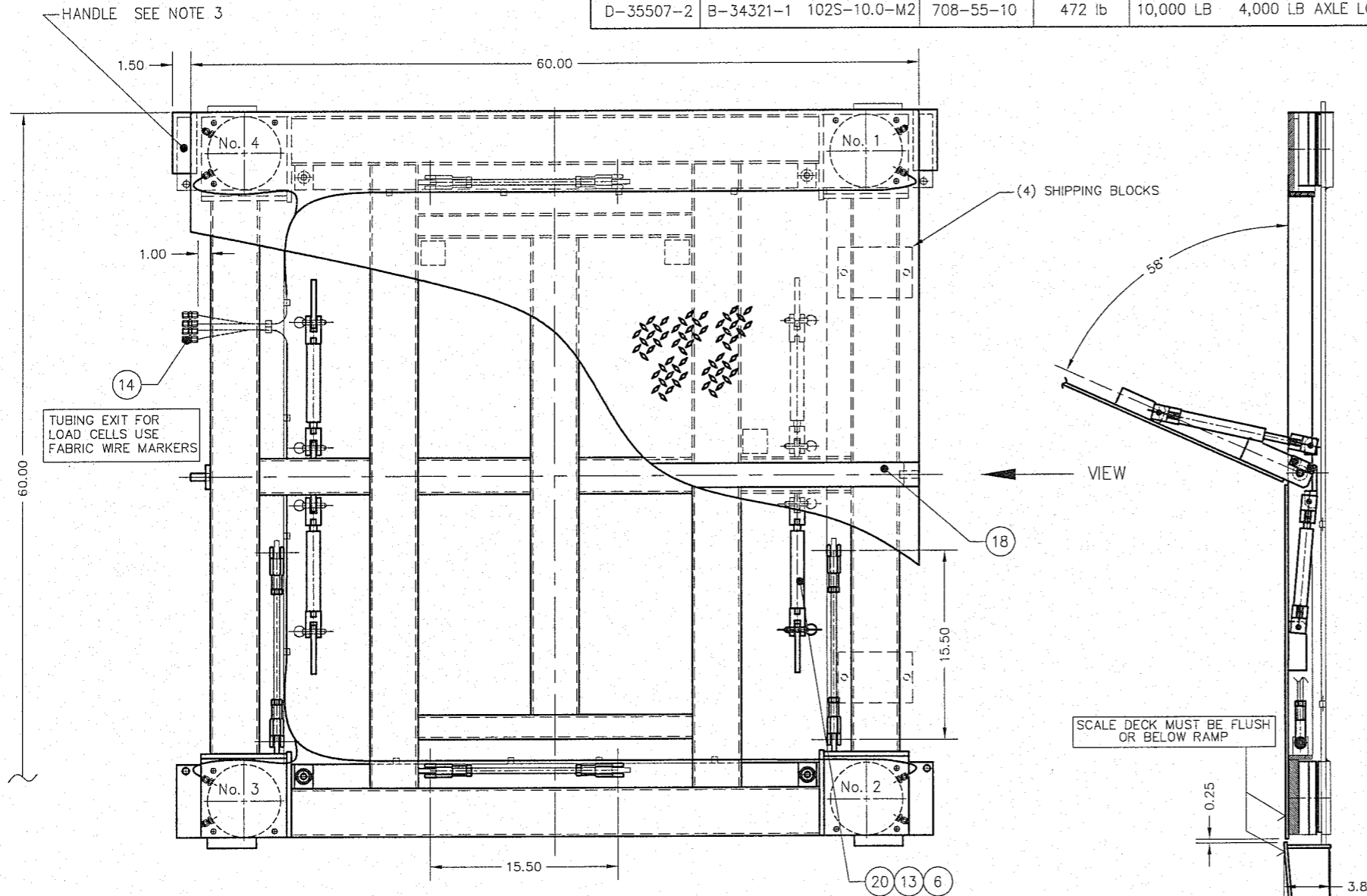


| DASH NO.  | LOAD CELL MODEL NO.    | SCALE MODEL NO.              | DEAD WEIGHT          | CAPACITY  |
|-----------|------------------------|------------------------------|----------------------|---|
| D-35507-1 | B-34326-2<br>B-34321-1 | 102S-03.5-M1<br>102S-10.0-M2 | 708-55-2<br>708-55-5 | 2,000 LB<br>5,000 LB  |
| D-35507-2 | B-34321-1              | 102S-10.0-M2                 | 708-55-10            | 2,000 LB AXLE LOAD<br>4,000 LB AXLE LOAD<br>10,000 LB<br>4,000 LB AXLE LOAD |

| ITEM NO. | DESCRIPTION             | QTY     | MATERIAL | UNIT WT. | PART NO.            | SIZE                            | WT.                            |
|----------|-------------------------|---------|----------|----------|---------------------|---------------------------------|--------------------------------|
| 1        | LIFT DECK SET           | 1       | SS 304   | 282      | D-35891 (0.25THK)   | (4 WAY SAFETY PLATE - OPTIONAL) | 282                            |
| 2        | DECK FRAME              | 1       | SS 304   |          | D-35890             |                                 | 209                            |
| 3        | BASE FRAME              | 1       | SS 304   |          | D-35509             |                                 | 119                            |
| 4        | LOAD CELL               | 4       | SS 304   |          | SEE TABLE           |                                 |                                |
| 5        | ROD CLEVIS              | 8       | SS 304   |          | A-34541-3           | M10 X 1.5                       |                                |
| 6        | ROD CLEVIS              | 8       | SS 304   |          | 2806SS              | 0.500-20 UNF                    | MIDWEST CONTROL PRODUCTS CORP. |
| 7        | STAYBAR                 | 4       | SS 304   |          | A-35900-3           | 0.500-20 UNF X 13.25            |                                |
| 8        | CLEVIS PIN              | 8       | SS 303   |          | 92390A382           | 0.50 DIA X 1.19 GRIP LENGTH     | McMASTER-CARR                  |
| 9        | HAIR PIN COTTER         | 8       | SS 304   |          | 92391A310           | 0.25 - 0.38 SHAFT 1.18 OL       | McMASTER-CARR                  |
| 10       | VERTICAL STOP THRO ROD  | 4       | SS 304   |          | 0.500-20 UNF X 2.75 |                                 |                                |
| 11       | VS HEX NUT WELDMENT     | 4       | SS 304   |          | A-35703             |                                 |                                |
| 12       | HEX NUT, HALF           | 16      | SS 304   |          | 0.500-20 UNF        |                                 |                                |
| 13       | QUICK RELEASE PIN       | 8       | SS 303   |          | 98404A372           | 0.38 DIA X 1.2 GRIP LENGTH      | McMASTER CARR                  |
| 14       | UNION                   | 4       | SS 316   |          | SS-200-6            |                                 | SWAGelok OR EQUAL              |
| 15       | ANCHOR BOLT 0.50 X 4.50 | 4 + A/R | SS 304   |          | KB11304SS12-412     |                                 | HILTI OR EQUAL                 |
| 16       | HHCS                    | 8       | SS       |          | 0.250-20 UNC X 0.50 |                                 |                                |
| 17       | FHCS                    | 8       | SS       |          | 0.250-20 UNC X 0.50 |                                 |                                |
| 18       | SPACER BAR              | 1       | SS 304   |          | B-35558-2           |                                 |                                |
| 19       | LASH                    | 4       | SS 304   |          | A-35557             |                                 |                                |
| 20       | GAS SPRINGS             | 4       | SS 316   |          | 1165-SSH-2.5-360    | (REF B-35517)                   | AMERI TOOL                     |
| 21       | RAMP                    | A/R     | SS 304   |          | B-35706             |                                 |                                |



- NOTES:
- CAUTION: WHEN USING FORK LIFT TO MOVE SCALE ADD SHIPPING BLOCKS AS SHOWN.
  - SEE PRODUCTION CONTROL DRAWING D-35654.
  - OPENING HAND FORCE 45 lb.
  - FINISH: WHITE SAND BLAST TO (125 MIC).

| REV | DESCRIPTION   | DATE     | BY  |
|-----|---|----------|-----|
| G   | DRAWING & BOM UPDATED TO NEW STAYBAR ARRANGEMENT  | 9/6/05   | CBM |
| F   | CHART UPDATED   | 7/28/04  | CBM |
| E   | DECK FRAME REDESIGNED<br>D-35891 WAS D-35510, D-35890 WAS D-35508   | 2/19/04  | CBM |
| D   | DRAWING UPDATED   | 10/29/03 | CBM |
| C   | 3.75 WAS 4.00, 0.38 WAS 0.63 AND 3.88 WAS 4.25.<br>ITEM 17 0.250-20UNC X 0.50 WAS 0.250-20UNC X 0.36<br>ON B/M ITEM 21 B-35706 WAS B-34859. | 01/26/03 | GMR |
| B   | REVISED   | 11/6/02  | CBM |
| A   | REVISED   | 4/8/02   | CBM |

EMERY WINSLOW SCALE COMPANY  
SEYMOUR, CT U.S.A. TERRE HAUTE, IN.

SCALE ASSEMBLY  
708-55-  
WITH GAS SPRING LIFT DECK

DRAWN: CBM DATE: 9/28/01  
CHECKED: DATE:  
ACAD FILENAME: ACO0871  
LAYERS USED: LO-L06

SCALE FIRST USED ON DRAWING NO. REV  
1:6 1:3 D-35507- G

THIS DRAWING IS THE PROPERTY OF EMERY WINSLOW SCALE COMPANY SEYMOUR, CONNECTICUT. THE INFORMATION CONTAINED HEREIN IS CONFIDENTIAL AND IS NOT TO BE USED OR DISSEMINATED TO OTHERS WITHOUT THE EXPRESS WRITTEN CONSENT OF EMERY WINSLOW SCALE COMPANY.