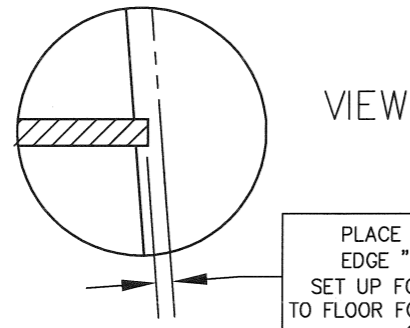
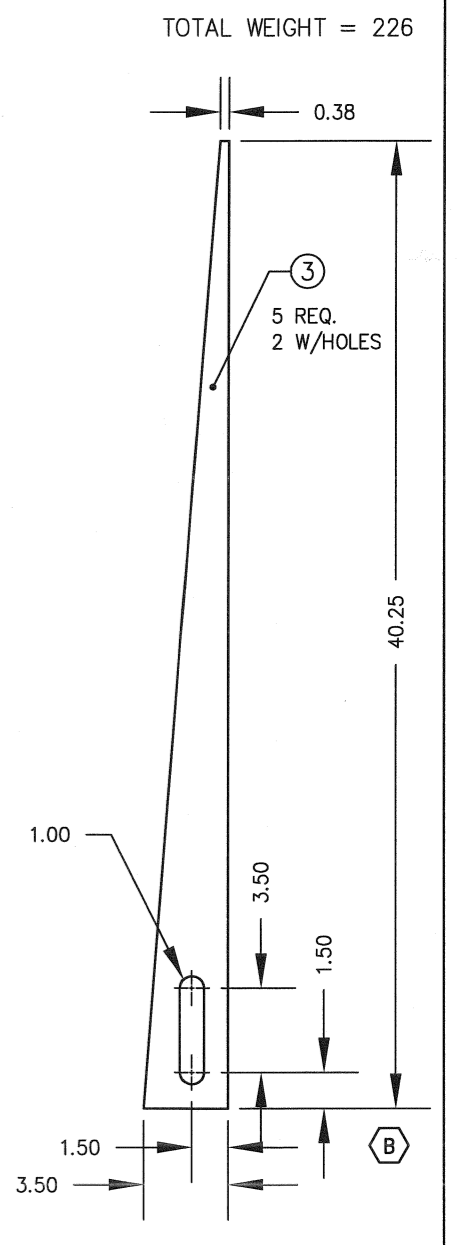
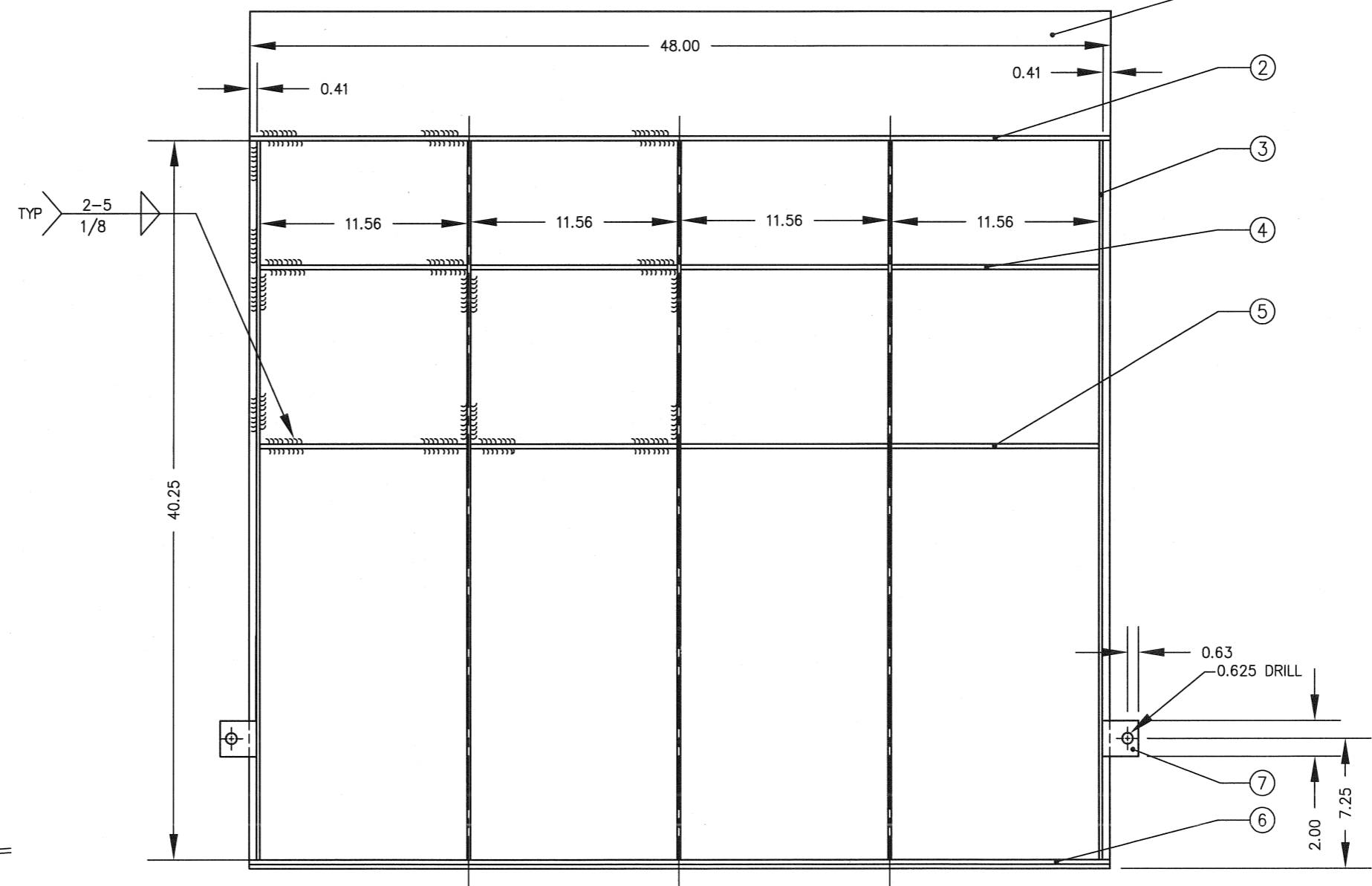
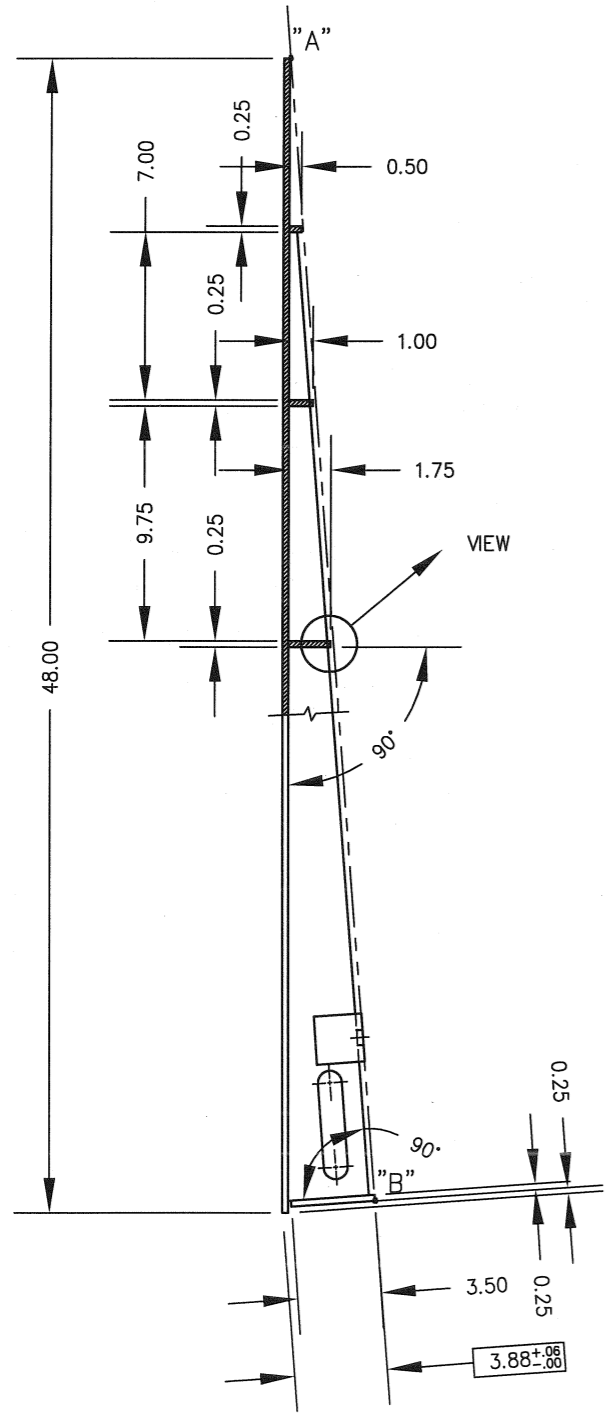


| ITEM NO. | DESCRIPTION | QTY | MATERIAL | UNIT WT. | PART NO. | SIZE | WT. |
|----------|--------------------|-----|----------|----------|---------------------------------|------|-----|
| 1 | 4 WAY SAFETY PLATE | 1 | A/R | 11.3 | 0.25 X 48.00 X 48.00 | | 181 |
| 2 | GUSSET | 1 | A/R | 0.5 | 0.25 X 0.50 X 48.00 | | 2.0 |
| 3 | GUSSET | 5 | A/R | 2.5 | 0.19 X 3.88 X 40.25 | | 20 |
| 4 | STIFFENER | 4 | A/R | 0.9 | 0.25 X 1.00 X 11.56 | | 3.7 |
| 5 | STIFFENER | 4 | A/R | 1.5 | 0.25 X 1.75 X 11.56 | | 6 |
| 6 | GUSSET | 1 | A/R | 3.0 | 0.25 X 3.50 X 48.00 | | 12 |
| 7 | BRACKET | 2 | A/R | 3.2 | 0.25 X 2.00 X 2.00 X 2.00 ANGLE | | 1.1 |
| 8 | | | | | | | |
| 9 | | | | | | | |
| 10 | | | | | | | |
| 11 | | | | | | | |



PLACE A BAR OVER EDGE "A" AND "B" TO SET UP FOR A CLEARANCE TO FLOOR FOR ITEMS 2, 4 & 5 OF 0.06



NOTE:
1. MATERIAL: -Y CARBON STEEL
-Z SS 304

TOTAL WEIGHT = 226

| | | | | | | | |
|--|-----------------|---------|-----|---|----------------------|---|---------------|
| | | | | ALL SHARP CORNERS AND EDGES TO BE BROKEN | | EMERY WINSLOW SCALE COMPANY SEYMOUR, CT U.S.A TERRE HAUTE, IN. | |
| B | 40.25 DIM MOVED | 4/30/04 | CBM | UNLESS OTHERWISE SPECIFIED DIMENSIONS ARE IN INCHES | | RAMP ASSEMBLY 48.00 X 48.00 X 3.88 (4") 4,000 lb AXLE | |
| A | REDESIGNED | 4/26/04 | CBM | MACHINING .XX = ± .01 .XXX = ± .005 | FABRICATION ± .13 | | |
| LTR | REVISION | DATE | BY | DRAWN GMR DATE 01/29/03 | | SCALE | FIRST USED ON |
| THIS DRAWING IS THE PROPERTY OF EMERY WINSLOW SCALE COMPANY SEYMOUR, CONNECTICUT. THE INFORMATION CONTAINED HEREIN IS CONFIDENTIAL AND IS NOT TO BE USED OR DISSEMINATED TO OTHERS WITHOUT THE EXPRESS WRITTEN CONSENT OF EMERY WINSLOW SCALE COMPANY. | | | | CHECKED DATE | | 1:8 | |
| | | | | ACAD FILENAME: AC01004 | | DRAWING NO. B-35736 | |
| | | | | LAYERS USED: 01,02 | | REV. B | |