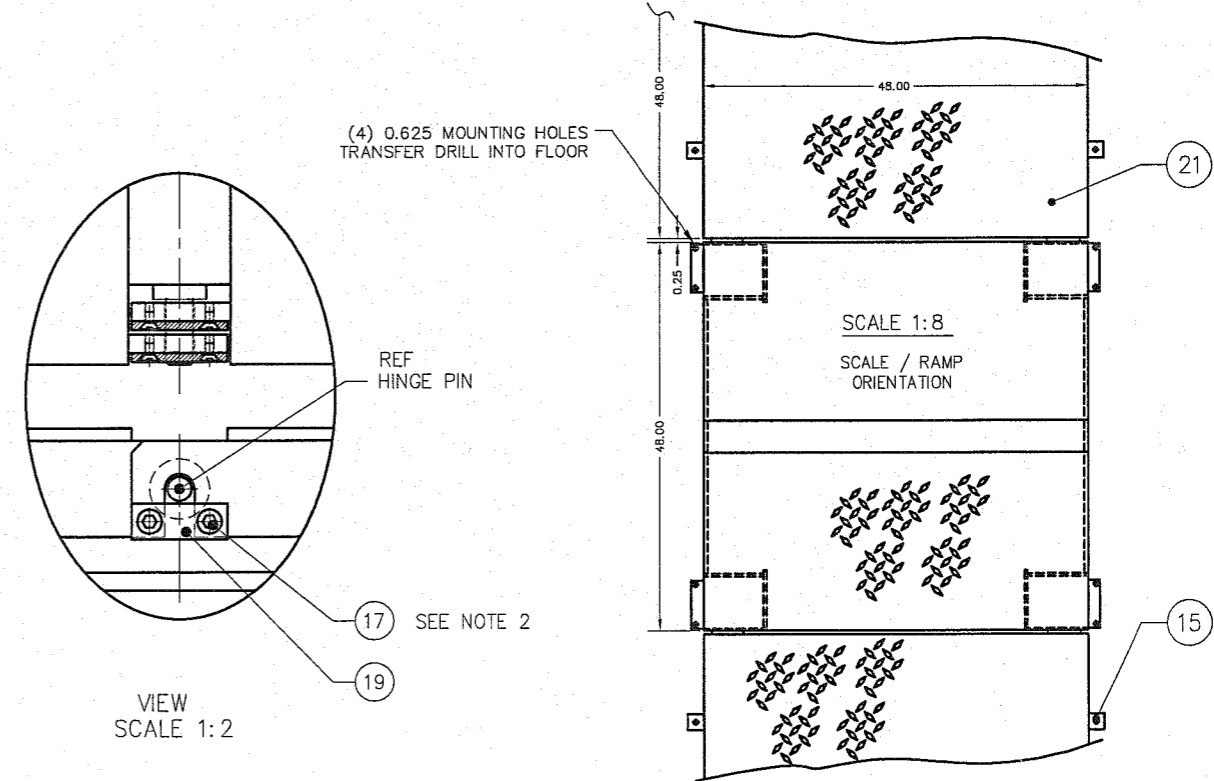
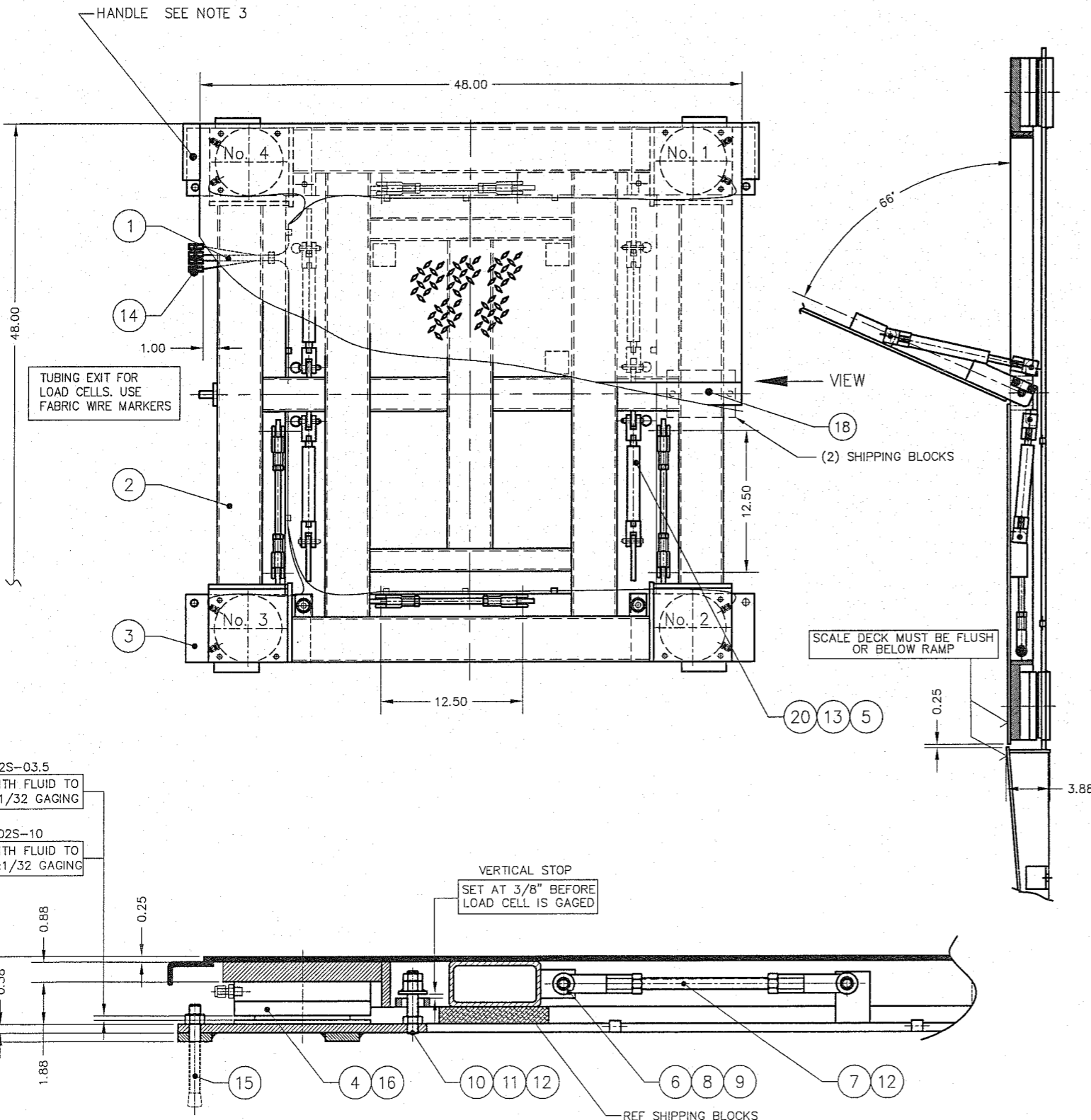
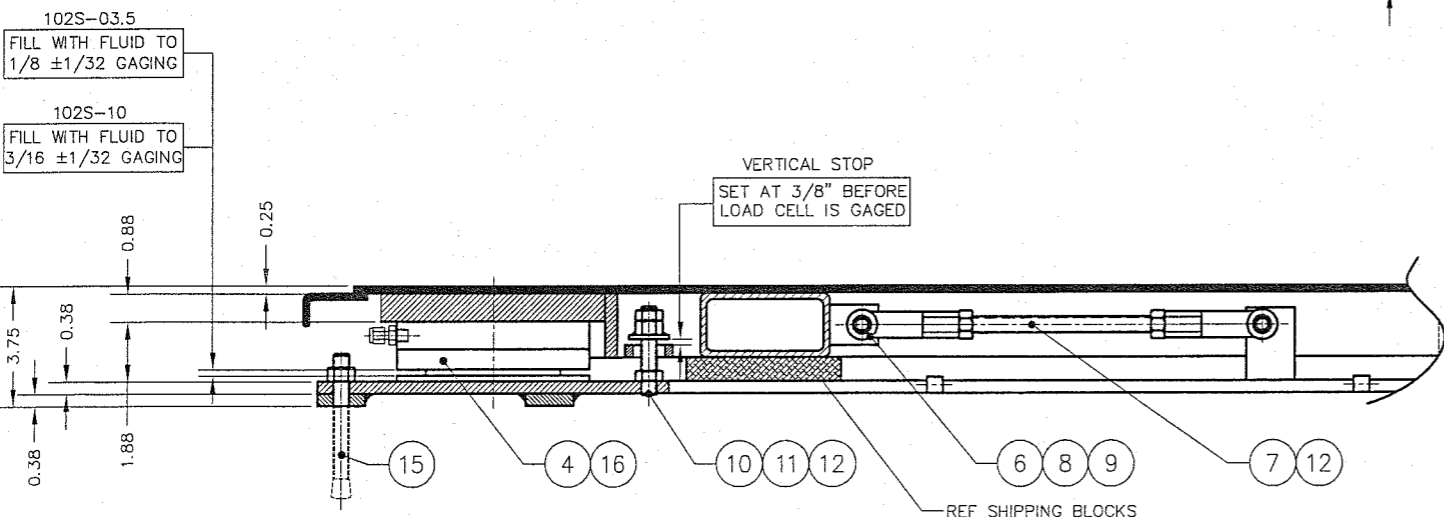


DASH NO.	LOAD CELL MODEL NO.	SCALE MODEL NO.	DEAD WEIGHT	CAPACITY
D-35866-1	B-34326-2 B-34321-1	102S-03.5-M1 102S-10.0-M2	708-44-2 708-44-5	433 lb 2,000 LB 2,000 LB AXLE LOAD 5,000 LB 4,000 LB AXLE LOAD
D-35866-2	B-34321-1	102S-10.0-M2	708-44-10	433 lb 10,000 LB 4,000 LB AXLE LOAD

ITEM NO.	DESCRIPTION	QTY	MATERIAL	UNIT WT.	PART NO.	SIZE	WT.
1	LIFT DECK SET	1	SS 304		D-35870 (0.25)	(4 WAY SAFETY PLATE - OPTIONAL)	188
2	DECK WELDMENT	1	SS 304		D-35867		148
3	BASE FRAME WELDMENT	1	SS 304		D-35868		97
4	LOAD CELL	4	SS 304		SEE CHART		
5	ROD CLEVIS	8	SS 304		A-34541-3	M10 X 1.5	
6	ROD CLEVIS	8	SS 304		2806SS	0.500-20 UNF MIDWEST CONTROL PRODUCTS CORP.	
7	STAYBAR	4	SS 304		A-35900-1	0.500-20 UNF X 8.75	
8	CLEVIS PIN	8	SS 303		92390A382	0.50 DIA X 1.19 GRIP LENGTH McMASTER CARR	
9	HAIR PIN COTTER	8	SS 304		92391A310	0.25 - 0.38 SHAFT 1.18 OL McMASTER CARR	
10	VERTICAL STOP THRD ROD	4	SS 304		0.500-20 UNF X 2.75		
11	VS HEX NUT WELDMENT	4	SS 304		A-35703		
12	HEX NUT, HALF	16	SS 304		0.500-20 UNF		
13	QUICK RELEASE PIN	8	SS 303		98404A372	0.38 DIA X 1.2 GRIP LENGTH McMASTER CARR	
14	UNION	4	SS 316		SS-200-6	SWAGelok OR EQUAL	
15	ANCHOR BOLT 0.50 X 4.50	4 + A/R	SS 304		KB11304SS12-412	HILTI OR EQUAL	
16	HHCS	8	SS 304		0.250-20 UNC X 0.50		
17	FHSCS	8	SS 304		0.250-20 UNC X 0.50		
18	SPACER BAR	1	SS 304		B-35558-1		
19	LASH	4	SS 304		A-35557		
20	GAS SPRINGS	4	SS 316		1165-SSHD 2.5-150	(REF B-35517) AMERI TOOL	
21	RAMP	A/R	SS 304		B-35736		



- NOTES:
- CAUTION: WHEN USING FORK LIFT TO MOVE SCALE ADD SHIPPING BLOCKS AS SHOWN.
 - SEE PRODUCTION CONTROL DRAWING D-35654.
 - OPENING HAND FORCE 45 lb.
 - FINISH: WHITE SAND BLAST TO (125 MIC).



D	DRAWING & BOM UPDATED TO NEW STAYBAR ARRANGMENT	9/6/05	CBM	ALL SHARP CORNERS AND EDGES TO BE BROKEN	EMERY WINSLOW SCALE COMPANY SEYMOUR, CT U.S.A. TERRE HAUTE, IN.
C	CORNER WELDMENTS REVISED	8/25/05	CBM	DIMENSIONS ARE IN INCHES. TOLERANCES UNLESS SPECIFIED OTHERWISE:	
B	CHART UPDATED	7/28/04	CBM	MACHINING ±.01	
A	DECK FRAME REDESIGNED D-35870 WAS D-34326 D-35887 WAS D-35504	11/20/03	CBM	FABRICATION .XXX ± .005 ±.13	
REV	DESCRIPTION	DATE	BY		
THIS DRAWING IS THE PROPERTY OF EMERY WINSLOW SCALE COMPANY SEYMOUR, CONNECTICUT. THE INFORMATION CONTAINED HEREIN IS CONFIDENTIAL AND IS NOT TO BE USED OR DISSEMINATED TO OTHERS WITHOUT THE EXPRESS WRITTEN CONSENT OF EMERY WINSLOW SCALE COMPANY.				DRAWN: GMR DATE: 09/16/03	
				CHECKED: DATE:	
				ACAD FILENAME: ACD1096	
				LAYERS USED: L0-L5	
		SCALE	FIRST USED ON	DRAWING NO.	REV
		1:8	1:3	D-35866	D