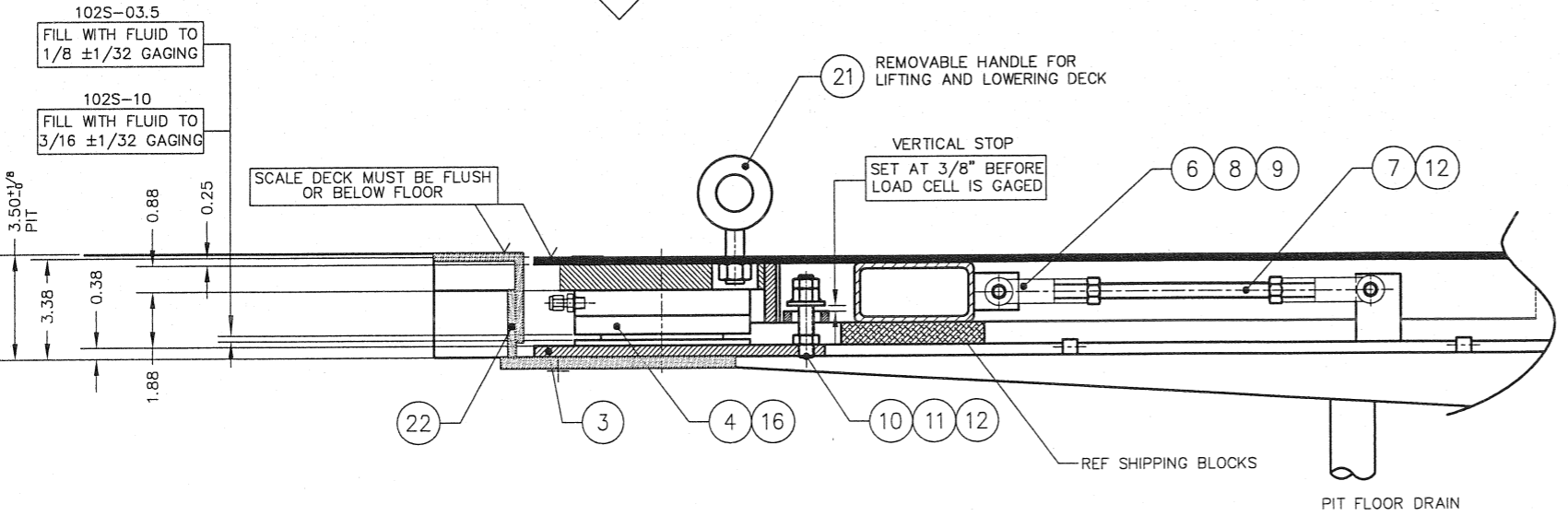
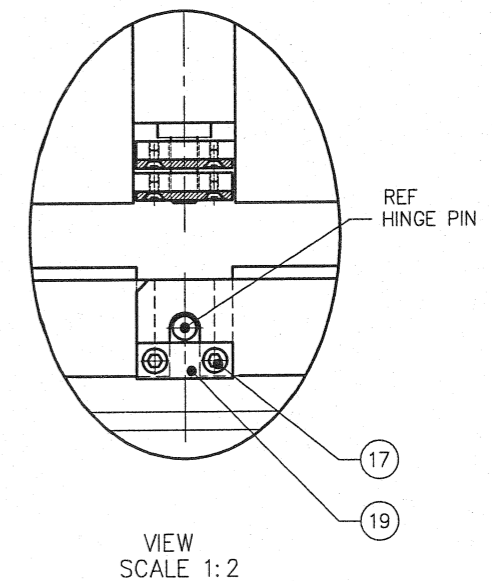
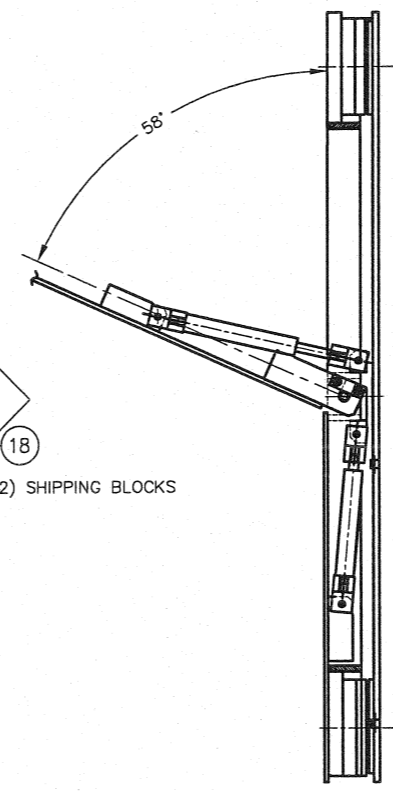
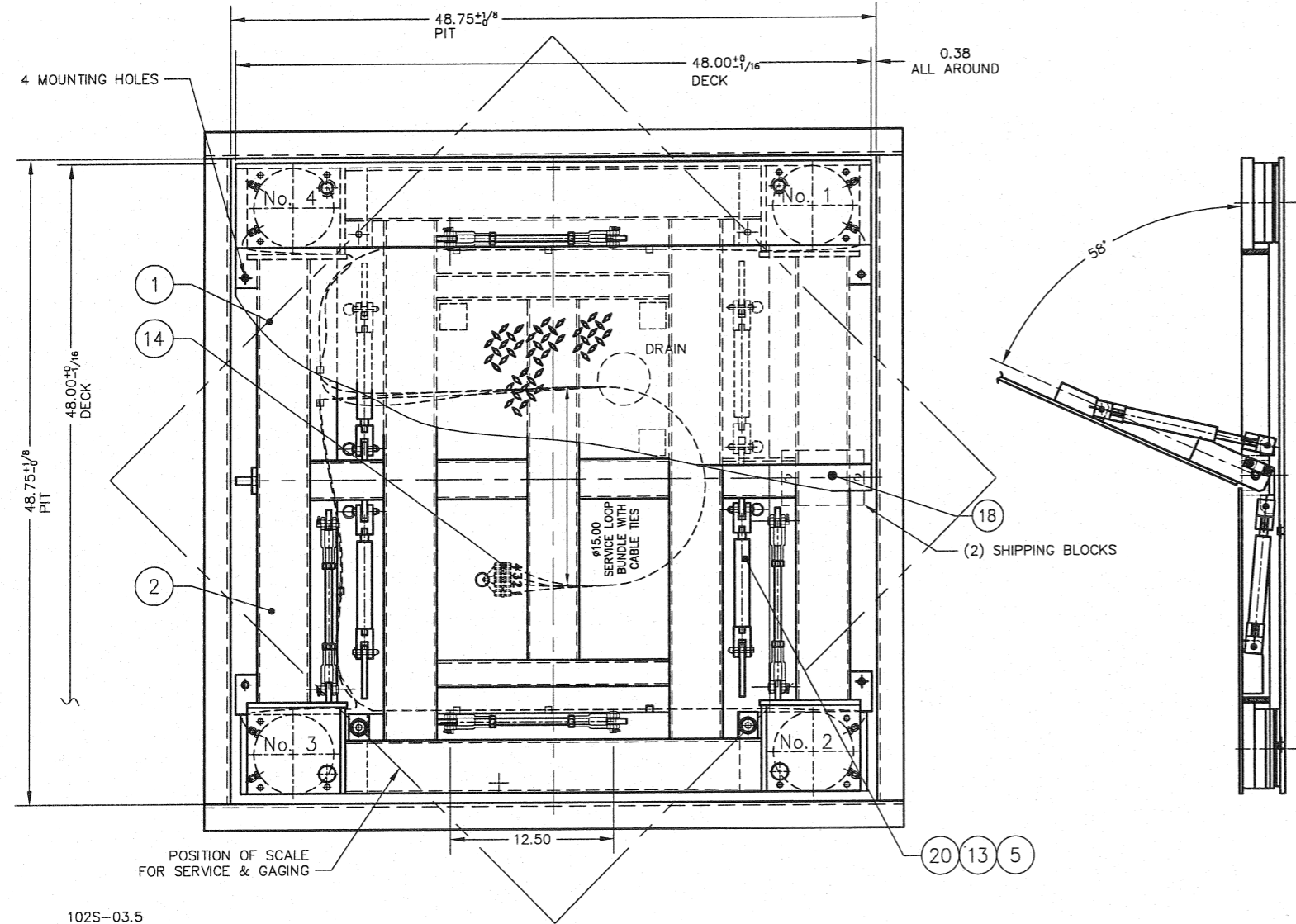


DASH NO.	LOAD CELL MODEL NO.	SCALE MODEL NO.	DEAD WEIGHT	CAPACITY
D-35604-1	B-34326-2	102S-03.5-M1	708-44-2	472 lb 2,000 LB 2,000 LB AXLE LOAD
D-35604-2	B-34321-1	102S-10.0-M2	708-44-5	472 lb 5,000 LB 4,000 LB AXLE LOAD
	B-34321-1	102S-10.0-M2	708-44-10	472 lb 10,000 LB 4,000 LB AXLE LOAD

ITEM NO.	DESCRIPTION	QTY	MATERIAL	UNIT WT.	PART NO.	SIZE	WT.
1	LIFT DECK SET	1	SS 304		D-36302 (0.25)	(4 WAY SAFETY PLATE - OPTIONAL)	272
2	DECK WELDMENT	1	SS 304		D-35867		210
3	BASE FRAME WELDMENT	1	SS 304		D-35627		123
4	LOAD CELL	4	SS 304		SEE CHART		
5	ROD CLEVIS	8	SS 304		A-34541-1	0.375-16 UNC	
6	ROD CLEVIS	8	SS 304		2B06SS	0.500-20 UNF MIDWEST CONTROL PRODUCTS CORP.	
7	STAYBAR	4	SS 304		0.500-20 UNF X 8.75		
8	CLEVIS PIN	8	SS 303		92390A382	0.50 DIA X 1.19 GRIP LENGTH	McMASTER CARR
9	HAIRPIN COTTER	8	SS 304		92391A130	0.25 - 0.38 SHAFT 1.18 OL	McMASTER CARR
10	VERTICAL STOP THRD ROD	4	SS 304		0.500-20 UNF X 2.75		
11	VS HEX NUT WELDMENT	8	SS 304		A-35703		
12	HEX NUT, HALF	20	SS 304		0.500-20 UNF		
13	QUICK RELEASE PIN	8	SS 303		98404A372	0.38 DIA X 1.2 GRIP LENGTH	McMASTER CARR
14	UNION	4	SS 316		SS-200-6		SWAGelok OR EQUAL
15							
16	HHCS	8	SS 304		0.250-20 UNC X 0.50		
17	FHSCS	8	SS 304		0.250-20 UNC X 0.38		
18	SPACER BAR	1	SS 304		B-35558-1		
19	LASH	4	SS 304		A-35557		
20	GAS SPRINGS	4	SS 316		1165-SSHD-2.5- 150	(REF B-35517)	AMERI TOOL
21	EYE BOLT	4	CS		0.625-11 UNC X 1.75	312152	McMASTER CARR
22	PIT FRAME	1	SS 304		D-36300		



FOR REFERENCE ONLY
Not for Construction

- NOTES:
- CAUTION: WHEN USING FORK LIFT TO MOVE SCALE ADD SHIPPING BLOCKS AS SHOWN.
 - SEE PRODUCTION CONTROL DRAWING D-35654
 - OPENING HAND FORCE 45 lb.

				ALL SHARP CORNERS AND EDGES TO BE BROKEN		EMERY WINSLOW SCALE COMPANY SEYMOUR, CT U.S.A TERRE HAUTE, IN.	
				DIMENSIONS ARE IN INCHES.			
				TOLERANCES UNLESS SPECIFIED OTHERWISE:			
				MACHINING ±.01			
				FABRICATION ±.13			
				.XXX = ±.005			
THIS DRAWING IS THE PROPERTY OF EMERY WINSLOW SCALE COMPANY SEYMOUR, CONNECTICUT. THE INFORMATION CONTAINED HEREIN IS CONFIDENTIAL AND IS NOT TO BE USED OR DISSEMINATED TO OTHERS WITHOUT THE EXPRESS WRITTEN CONSENT OF EMERY WINSLOW SCALE COMPANY.				DRAWN: CBM DATE: 7/15/02		SCALE FIRST USED ON DRAWING NO. REV	
REV DESCRIPTION DATE BY				CHECKED: DATE:		1:6 1:3	
A DESIGN UPDATED & REVISED 6/20/05 CBM				ACAD FILENAME: ACO0924		D-35604 A	
				LAYERS USED: L0-L5			

GAS SPRING LAYOUT - B-35517