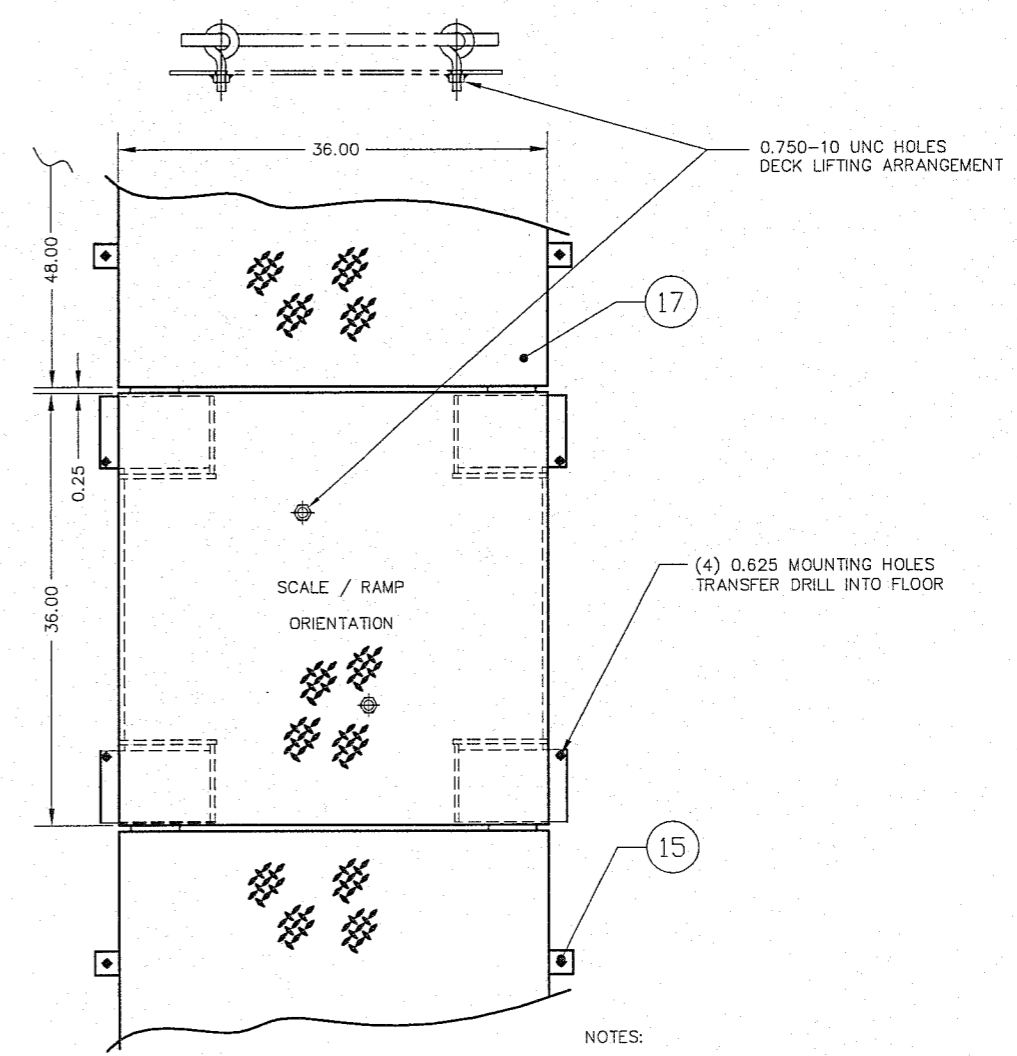
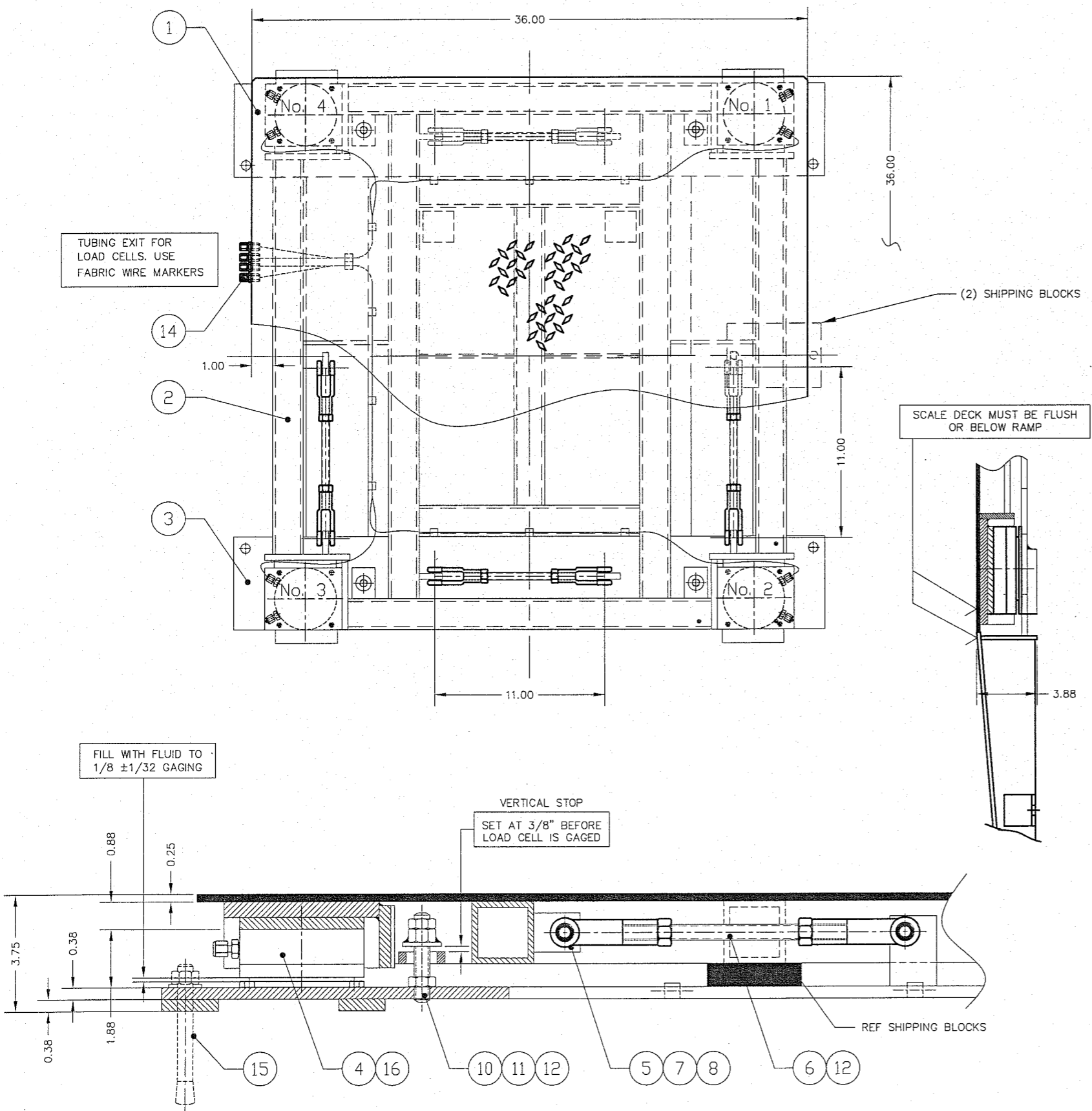


ITEM NO.	DESCRIPTION	QTY	MATERIAL	UNIT WT.	PART NO.	SIZE	WT.
1	REMOVABLE DECK	1	SS 304		B-35541	(4 WAY SAFETY PLATE - OPTIONAL)	101
2	DECK WELDMENT	1	SS 304		D-35540		82
3	BASE WELDMENT	1	SS 304		D-35539		77
4	LOAD CELL	4	SS 304		B-34328-2	1025-03.5-M1	
5	ROD CLEVIS	8	SS 304		2806SS	0.500-20 UNF	MIDWEST CONTROL PRODUCTS CORP.
6	STAYBAR	4	SS 304		A-35900-1	0.500-20 UNF X 8.75	
7	CLEVIS PIN	8	SS 303		92380A382	0.50 DIA X 1.18 GRIP LENGTH	McMASTER CARR
8	HAIR PIN COTTER	8	SS 304		92391A130	0.25 - 0.38 SHAFT 1.18 QL	McMASTER CARR
9		1					
10	VERTICAL STOP THRD ROD	4	SS 304		0.500-20 UNF X 2.75		
11	VS HEX NUT WELDMENT	4	SS 304		A-35703		
12	HEX NUT, HALF	16	SS 304		0.500-20 UNF		
13							
14	UNION	4	SS 316		SS-200-6		SWAGelok OR EQUAL
15	ANCHOR BOLT	4 + A/R	SS 304		KB113045S12-412		HILTI OR EQUAL
16	HHCS	8	SS		0.250-20 UNC X 0.50		
17	RAMP	A/R	SS 304		B-35735		



- NOTES:
- CAUTION: WHEN USING FORK LIFT TO MOVE SCALE ADD SHIPPING BLOCKS AS SHOWN.
 - SEE PRODUCTION CONTROL DRAWING D-35654.
 - AXLE LOAD 2000 lb
 - FINISH: WHITE SAND BLAST TO (125 MIC).

REV	DESCRIPTION	DATE	BY
E	DRAWING & BOM UPDATED TO NEW STAYBAR ARRANGEMENT	4/12/04	CBM
D	NOTES, DRAWING UPDATED	4/12/04	CBM
C	DRAWING UPDATED	10/29/03	CBM
B	REMOVABLE DECK QTY 1 WAS 2, DECK FRAME TOP VIEW CORRECTED	9/18/03	CBM
A	3.75 WAS 4.00, 0.38 WAS 0.63 AND 3.88 WAS 4.25 ON B/W, ITEM 17 B-35735 WAS B-35565.	6/28/03	GMR

ALL SHARP CORNERS AND EDGES TO BE BROKEN DIMENSIONS ARE IN INCHES. TOLERANCES UNLESS SPECIFIED OTHERWISE: MACHINING ± .01 FABRICATION .xxx ± .005 ± .13		EMERY WINSLOW SCALE COMPANY SEYMOUR, CT U.S.A. TERRE HAUTE, IN.	
THIS DRAWING IS THE PROPERTY OF EMERY WINSLOW SCALE COMPANY SEYMOUR, CONNECTICUT. THE INFORMATION CONTAINED HEREIN IS CONFIDENTIAL AND IS NOT TO BE USED OR DISSEMINATED TO OTHERS WITHOUT THE EXPRESS WRITTEN CONSENT OF EMERY WINSLOW SCALE COMPANY.		DRAWN: CBM DATE: 2/28/02 CHECKED: DATE: ACAD FILENAME: ACO0895 LAYERS USED: LO - L6	
SCALE: 1:4		FIRST USED ON: DRAWING NO. D-35538 REV: E	