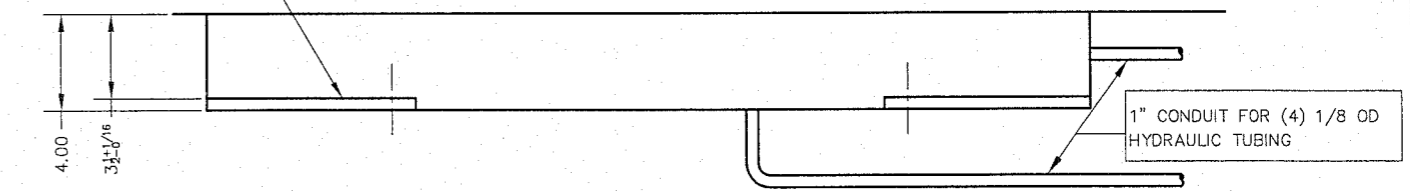
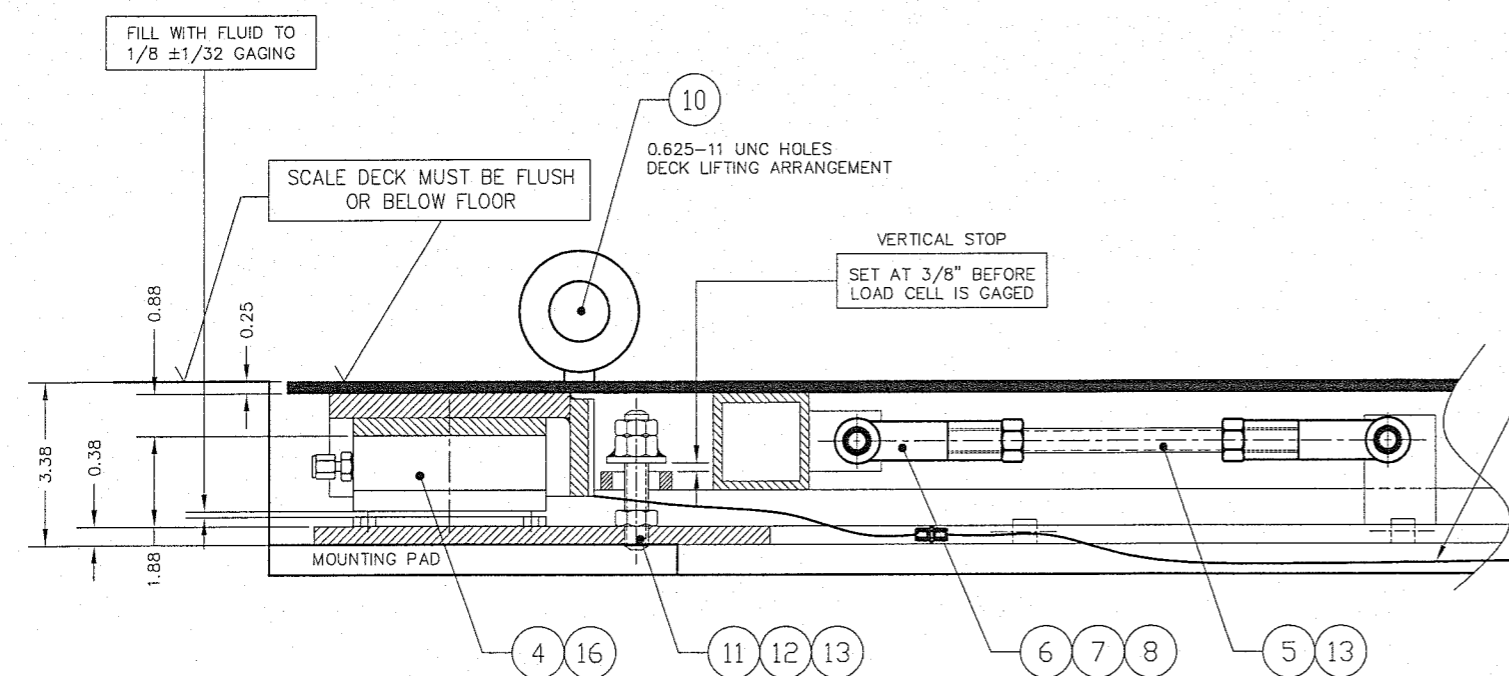
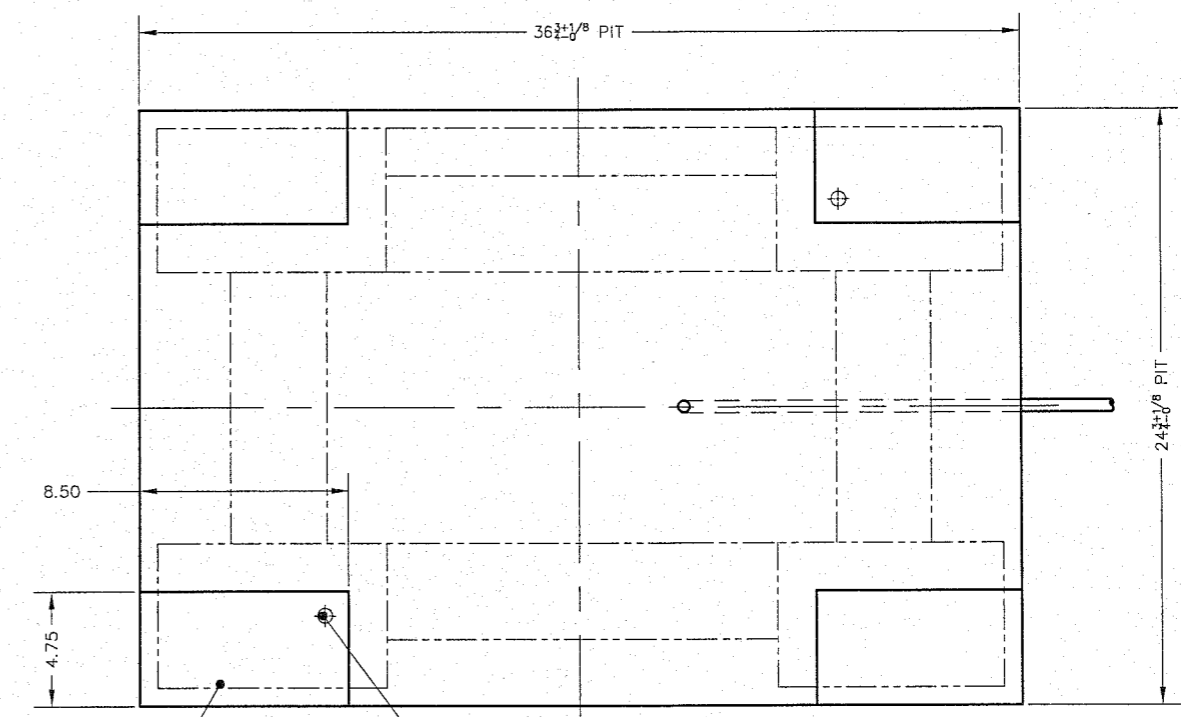
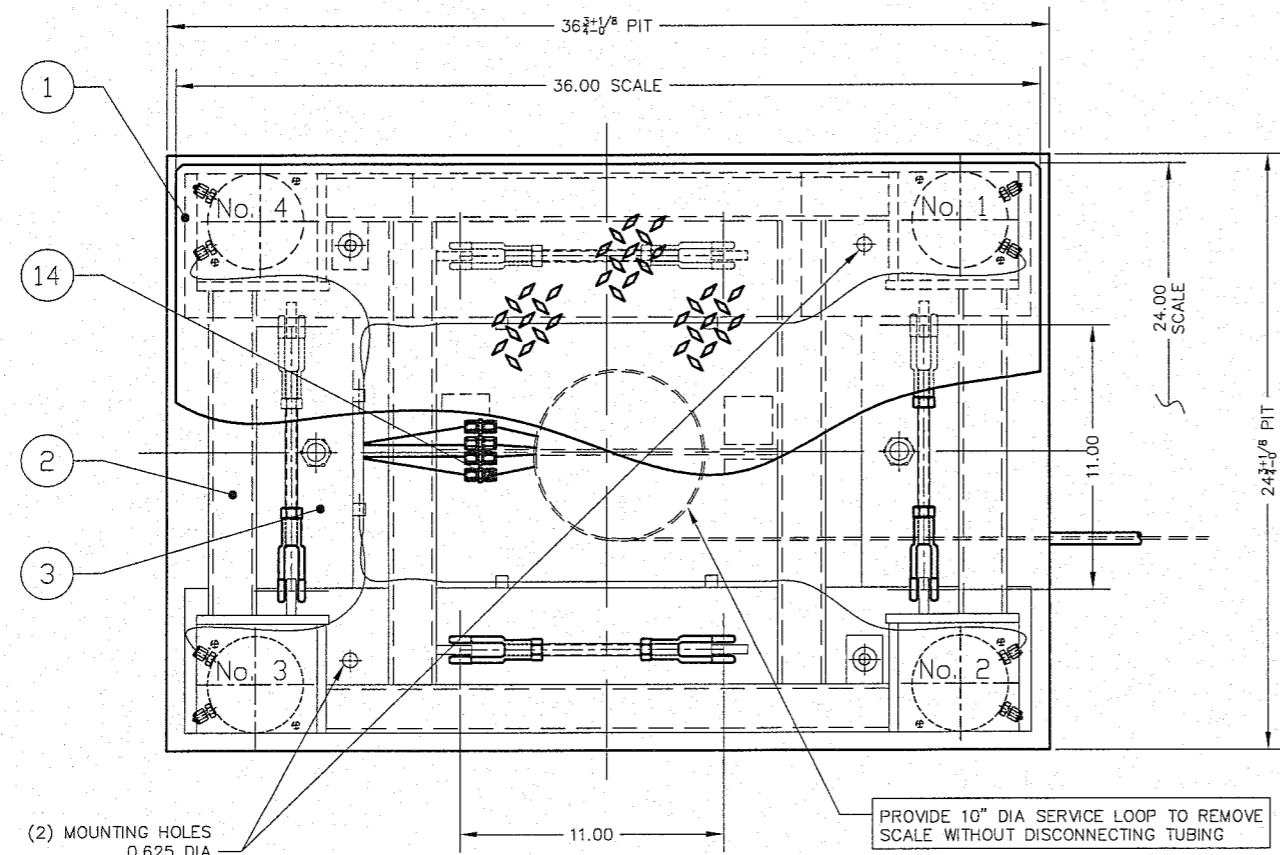


ITEM NO.	DESCRIPTION	QTY	MATERIAL	UNIT WT.	PART NO.	SIZE	WT.
1	REMOVABLE DECK	1	SS 304		B-36209	(4 WAY SAFETY PLATE)	60
2	DECK WELDMENT	1	SS 304		D-36208		58
3	BASE WELDMENT	1	SS 304		D-36207		50
4	LOAD CELL	4	SS 304		B-34326-2	102S-03.5-M1	
5	STAYBAR	4	SS 304		A-35600-1	0.500-20 UNF X 8.75	
6	ROD CLEVIS	8	SS 304		2806SS	0.500-20 UNF	MIDWEST CONTROL PRODUCTS
7	CLEVIS PIN	8	SS 303		92390A382	0.50 DIA X 1.19 GRIP LENGTH	MCMASTER CARR
8	HAIR PIN COTTER	8	SS 304		92391A310	0.25 - 0.38 SHAFT 1.18 OL	MCMASTER CARR
9							
10	EYE BOLT	2	CS		0.625-11 X 1.75	3013152	MCMASTER CARR
11	VERTICAL STOP THRO ROD	2	SS 304		0.500-20 UNF X 2.75		
12	VS HEX NUT WELDMENT	2	SS 304		A-35703		
13	HEX NUT, HALF	12	SS 304		0.500-20 UNF		
14	UNION	4	SS 316		SS-200-6		SWAGelok OR EQUAL
15	HHCS	2	SS 304		0.500-13 UNC X 1.00		
16	HHCS	8	SS		0.250-20 UNC X 0.50		

TOTAL WEIGHT: 168 lb



- NOTES:
- SEE PRODUCTION CONTROL DRAWING D-35654.
  - FINISH: WHITE SAND BLAST TO (125 MIC).

**FOR REFERENCE ONLY**  
**Not for Construction**

CUSTOMER: OMNOVA SOLUTIONS

ALL SHARP CORNERS AND EDGES TO BE BROKEN			EMERY WINSLOW SCALE COMPANY SEYMOUR, CT U.S.A. TERRE HAUTE, IN.	
DIMENSIONS ARE IN INCHES. TOLERANCES UNLESS SPECIFIED OTHERWISE:			SCALE ASSEMBLY 708-23-1, PIT WITH REMOVABLE DECK	
A	DRAWING & BOM UPDATED TO NEW STAYBAR ARRANGEMENT	9/6/05	CEBM	SCALE
REV	DESCRIPTION	DATE	BY	FIRST USED ON
				J-19342/43
THIS DRAWING IS THE PROPERTY OF EMERY WINSLOW SCALE COMPANY SEYMOUR, CONNECTICUT. THE INFORMATION CONTAINED HEREIN IS CONFIDENTIAL AND IS NOT TO BE USED OR DISSEMINATED TO OTHERS WITHOUT THE EXPRESS WRITTEN CONSENT OF EMERY WINSLOW SCALE COMPANY.			DRAWN: CEBM DATE: 3/9/05	
			CHECKED: DATE:	
			ACAD FILENAME: ACO1273	
			LAYERS USED: LO - L6	
			DRAWING NO. D-36206	
			REV A	